

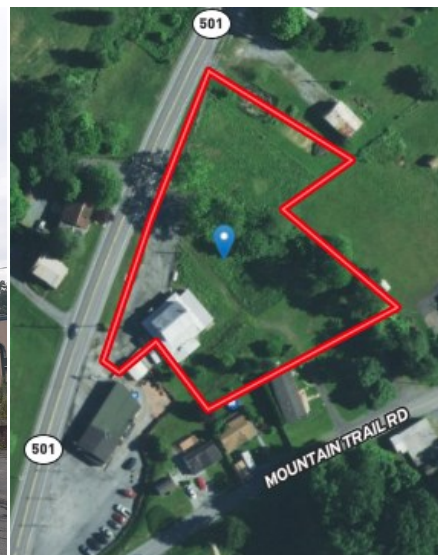


5 BEDROOM 1 BATH HOUSE ON 1.52 +/- ACRE LOT
SCHAEFFERSTOWN/BRICKERVILLE AREA-LEBANON CO



PUBLIC AUCTION

Thursday, August 18, 2022 at 6:00 PM



4355 STIEGEL PIKE, NEWMANSTOWN, PA 17073

Located Along PA-501, 3 Mi. S. of Schaefferstown & 3 Mi N. of Brickerville.

REAL ESTATE: Ready to Be Renovated to Suit Your Needs, this **3,178 SF 2 Story House with Additions and Enclosed Porch** Has Nice Blend of Large Open Rooms on the First Floor and 5 Bedrooms on the Second Floor; Macadam Parking Area and Gently Sloped Lot; 200-Amp Service Panel; Propane Forced Air Furnace with Duct Work; On-Site Well & Septic; Zoned Agricultural Transitional, Heidelberg Township, ELCO School District, Lebanon County.



Taxes: Annual (with Discounts) \$3,579.00.

Open House: Two hours before auction or by appointment. For appointment to see or for help to obtain bank financing, call Joel at 717-383-5606.

NOTE: This commercial combination property is a great opportunity for the creative investor or entrepreneur. High traffic location! Historically, this property was Mountain Trail Inn, and more recently, a landscape business. Confirm your plans with Heidelberg Township.

TERMS: 10% Down at Auction; Balance in 45 Days; 3% Buyer's Premium.

SEE MORE INFO & PHOTOS:
www.heiseyauctions.com

Joel Heisey Auctioneer
License #AU004037
(717) 949-3211
www.heiseyauctions.com




AUCTION FOR:

Legacy Cash Offer LLC.

Attorney: Anthony J. Fitzgibbons (717) 279-8313

INFORMATION BELIEVED TO BE ACCURATE BUT NOT GUARANTEED

SOLD on Serving you!