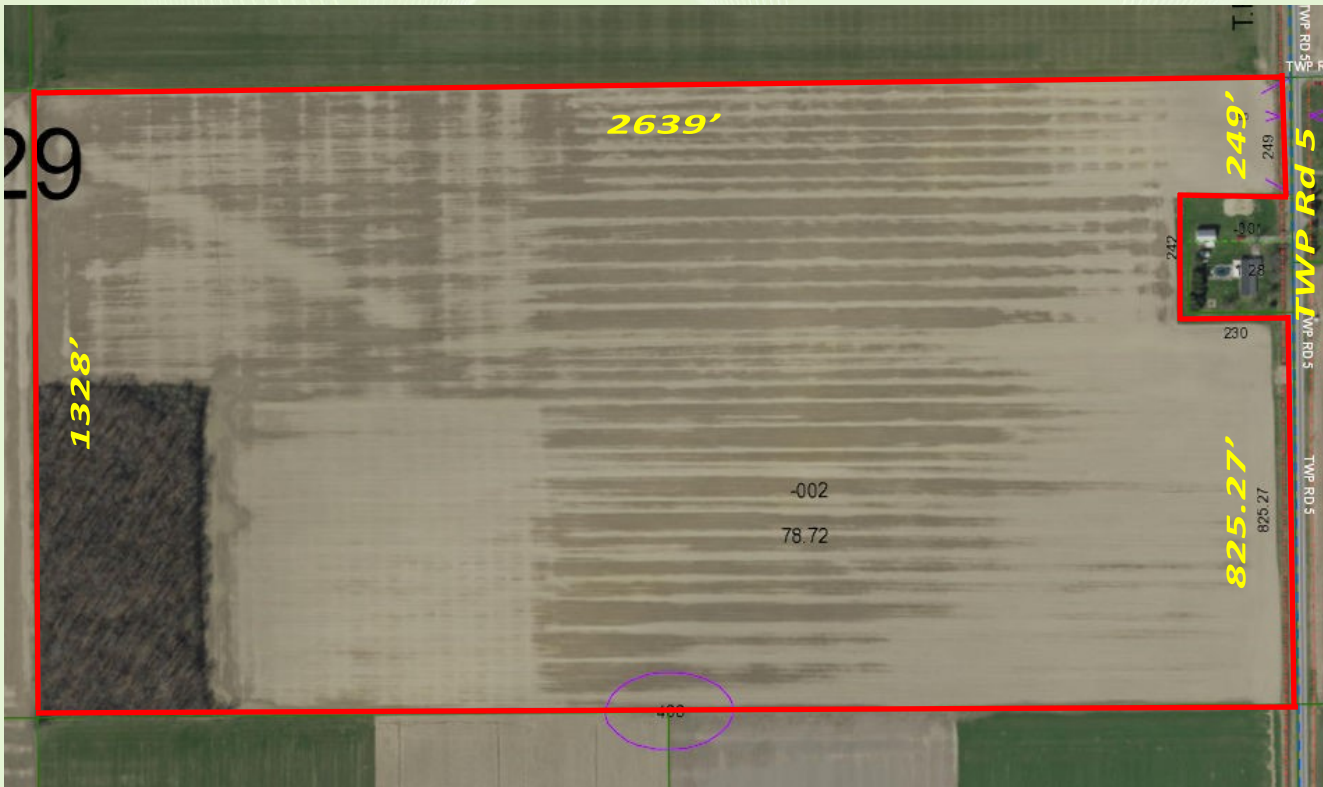


# FARM AUCTION

## 78.72+/- Acres



**DIRECTIONS: JUST SOUTH OF ST RT 281 ON CO RD 5, WEST SIDE, SECTION 29, RICHFIELD TWP.**

# 78.72+/- Acres Twp Rd 5

## Malinta, OH

### Thursday, Dec 6, 11:00 AM

*Auction Held at Malinta Fire Station 8-865 Co Rd K2, Malinta, OH 43535*

Parcel 37-290014.0000  
Richfield Township  
Henry County  
Patrick Henry Schools  
Year Taxes \$3,332.84

**Predominately Hoytville with some Nappanee Loam. Get Prepared! Good Productive Farm.**

**Owners:  
Darla VonDeylen & Sharon Reiter**

**Terms:** \$7,000.00 down in certified funds w/balance at closing. Closing held on or before 45 days. Have finances ready, selling with immediate confirmation. No Buyer's Premium.  
**Possession at closing.** Announcements made the day of the auction take precedence over printed materials. All information on this flyer was derived from sources believed to be correct but not guaranteed. Dimensions are approximate. Buyers need to rely entirely on their own judgment and inspections of property records. Any other terms & conditions will be announced the day of the auction and take precedence over printed material.

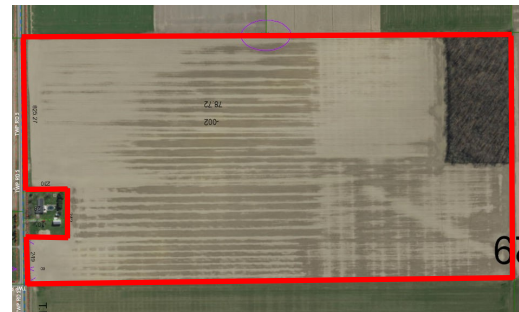
**WHALEN** WHALEN  
REALTY & AUCTION, LTD.

Information contained herein deemed reliable, but not guaranteed.

**AUCTIONEERS—John & Jason Whalen, Michael Murry - Office 419-337-7653 or 419-875-6317**

**December 2018**

Sat	Fri	Thu	Wed	Tue	Mon	Sun
						1
	7	6	5	4	3	2
	8	13	12	11	10	9
	14	13	12	11	10	9
	15	14	13	12	11	10
	16	15	14	13	12	11
	17	16	15	14	13	12
	18	17	16	15	14	13
	19	18	17	16	15	14
	20	19	18	17	16	15
	21	20	19	18	17	16
	22	21	20	19	18	17
	23	22	21	20	19	18
	24	23	22	21	20	19
	25	24	23	22	21	20
	26	25	24	23	22	21
	27	26	25	24	23	22
	28	27	26	25	24	23
	29	28	27	26	25	24
						30
						31



**FARM AUCTION**  
 Thursday, Dec 6, 11:00 AM  
 78.72+/- Acres Twp Rd 5  
 Malinta, OH

**WHALEN** WHALEN  
 REALTY & AUCTION, LTD.

216 E Linfoot  
 Wauseon, OH 43567