

# PUBLIC AUCTION

## Liquidation of Quarry Ridge Builders

Saturday, February 9, 2019 @ 8:00 am

Sale Location: 288 Hollow Road | New Providence, PA 17560



### Trucks

2012 Dodge Ram 3500 dually pickup truck w/aluminum dump bed, 6.7 Cummins (deleted), 167K miles, good solid truck. 2011 Dodge Ram 3500 pickup truck w/aluminum tool boxes & steel ladder rack, 6.7 Cummins (deleted), 186K, good solid truck w/fresh rebuilt trans. 2010 Dodge Ram 2500 pickup truck w/aluminum tool boxes & steel ladder rack, 6.7 Cummins (deleted), 250k miles.

### Trailers

2012 18' Atlas car hauler trailer w/extra height, 10,000 gvw. 2009 14' Carry On enclosed trailer, 7000 gvw, has cabinets & shelves inside. 2011 14' Appalachian double hoist dump trailer, 19,000 gvw, comes with Shurco cover. 2016 20' Kodiak flat bed tilt trailer, 13,700 gvw, LED lights, Model 2000. 2010 16' Worthington flatbed trailer w/ beavertail & ramps, 9900 gvw. 2012 14' Atlas cargo trailer w/ladder rack, 7000 gvw.

### Telescopic lifts

Manitou MRT 2150 rotating telehandler lift, 8100 hours, new engine at 6900 hours. 2002 Manitou telescopic lift, model MLT523T, cab w/heat & Ac, 5500 hrs, side shifting fork attachment & pallet forks. 2005 Manitou MT1340SL telescopic lift, cab w/heat & Ac, 3300 hours, serial # 219140.

### Equipment

Kubota KX057-4 mini excavator, 500 hours, float angle blade, 500 hrs, serial # 26650. NICE! Takeuchi TL130 track skidloader, good running machine, hours unknown.

NYK 5000 lb battery operated forklift, 2 stage mast, side shift. Prime Mover RR30B 36V electric 3000 lb forklift. Snorkel gas or propane operated scissor lift with air tires, 32' height, hours unknown. Barreto 912 trencher with tilt trailer. Stow concrete mixer w/Honda engine. Miller Big 40 G welder CC Dc welding generator, 3200 hours. (2) concrete buggies w/Honda engine. Snow Ex 1075 salt spreader. Custom made shingle buggy lift.

### Attachments

14' Pettibone jib attachment. Manitou 12' jib with winch. Manitou 14' rotating basket. Hydraulic excavator concrete breaker hammer attachment. 36" & 18" trackhoe buckets. 66" Tomahawk grapple bucket. Tomahawk skidloader mount tree spade attachment. 12" Bobcat bucket. Mcmillen auger, mounts on excavator or skidloader attachment. 24" & 18" auger bits. 10' & 16' work platforms. 72" skidloader bucket 10' Hyd. angle snow blade attachment. 83" skidloader bucket. 72" Bobcat skidloader bucket w/teeth. Large jackhammer attachment

### Tools & Misc

Concrete blankets. 275 gal fuel tank w/12v pump. 25' retractable hose reel for fuel. Ammco 502 tire changer. Electric concrete vibrator. Edco walk behind concrete saw. Honda EU2000 generator. Reddy heaters. Stihl chainsaws. (2) DeWalt twin tank air compressors. (2) Makita air compressors. (2) Power screeds with Honda engines.

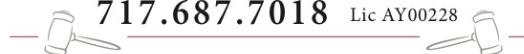


**Auctioneers**  
Christian Stoltzfus  
Levi Fisher  
Leon Stoltzfus  
Mose King  
Sylvan Stoltzfus Jr.



**AUCTION CENTER**

717.687.7018 Lic AY00228



Visit [www.paauctioncenter.com](http://www.paauctioncenter.com) for more pictures and information.

**SEE REVERSE  
SIDE FOR  
MORE INFO.**

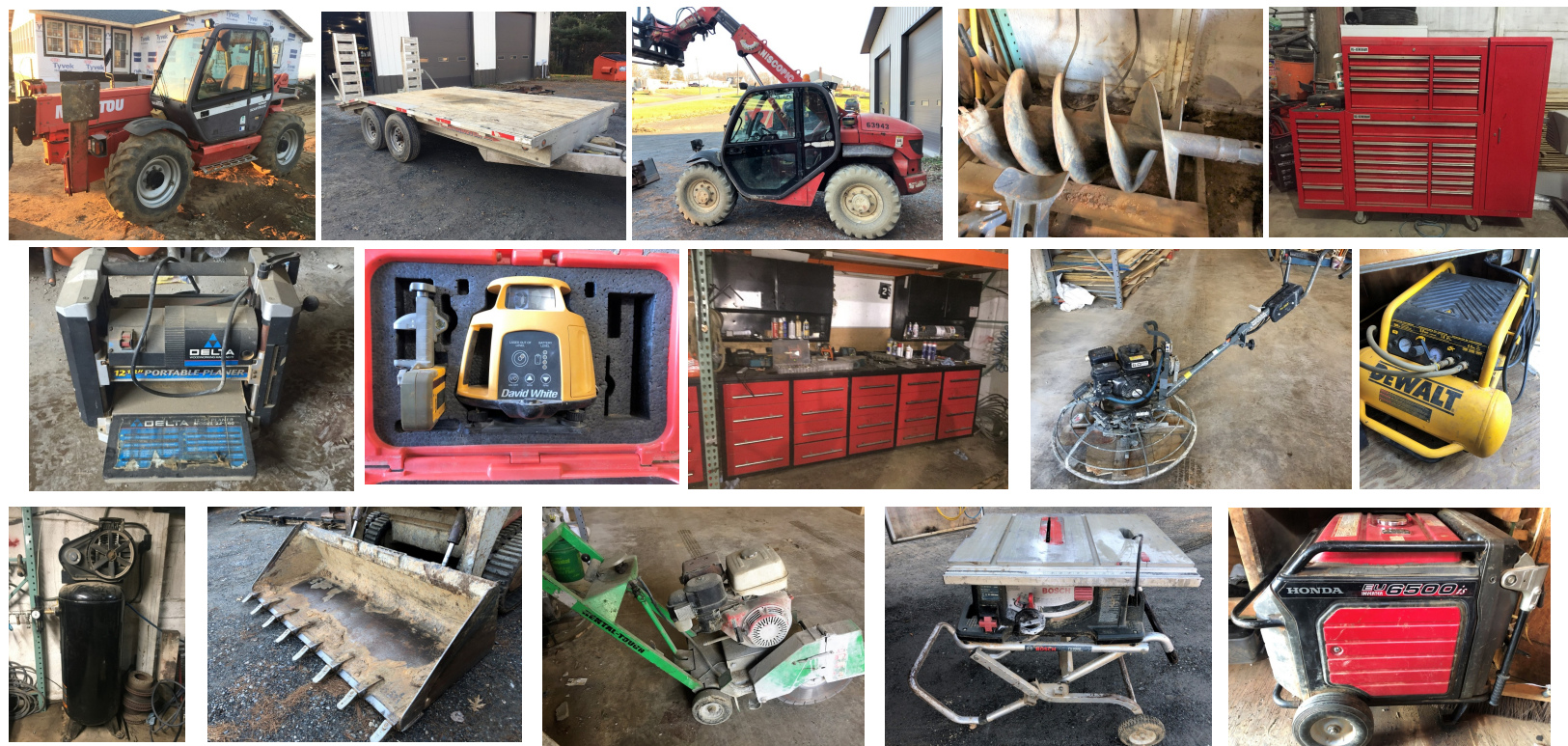
(4) assorted screed blades. Concrete chute. Edwards # 5 rebar cutter. (3) 10' Tapco metal brakes. Approx (8) pole jacks in assorted lengths. (2) Bosch table saw w/folding stands. (12) Max framing nailers. (10) Max roofing nailers. (6) Bostich trim nailers. (3) Bostch joist hanger nailers. (8) DeWalt circular saws. (2) Electric Makita chain saws. (3) DeWalt electric air compressors. (2) Hilti DXA41 powder activated nail gun. Approx. 150' of pallet and lumber racking. Large amount of safety harnesses. 1 Makita & 1 DeWalt chop saw on planks.(2) Tapco brake buddies. (2) pneumatic hardwood flooring nailers. (2) Hopper dumpster.

**Mechanic Equipment and Tools**

8000 lb 2 post free standing hydraulic vehicle lift. (3) Pittsburg manifold gauge sets. 500 amp carbon pile load tester. Pittsburg AC anti filler. 3/4" Ingersoll Rand impact. 7 piece oxygen sensor. Lincoln 225 amp arc welder. Puma portable electric air compressor. (2) 9' 20 drawer work benches/tool boxes.

Quarry Ridge Builders was a well established business with 3 crews, there will be a large amount of tools and supplies that are not listed.

**Not all items are listed. Online bidding available on some items. No buyers premium. No sales tax. All items sold as is. Sellers and auctioneers not responsible for accidents. Auction day announcements take precedence over all advertising. Auction starts at 8:00am. 2nd auctioneer starts approx 9:30am. Real estate at Noon. Equipment sells at approx 12:30pm.**



**Auctioneers**  
 Christian Stoltzfus  
 Levi Fisher  
 Leon Stoltzfus  
 Mose King  
 Sylvan Stoltzfus Jr.

  
**AUCTION CENTER**  
 717.687.7018 Lic AY00228  
 

Visit [www.paauctioncenter.com](http://www.paauctioncenter.com)  
 for more pictures and  
 information.