

**PRELIMINARY PLAT**



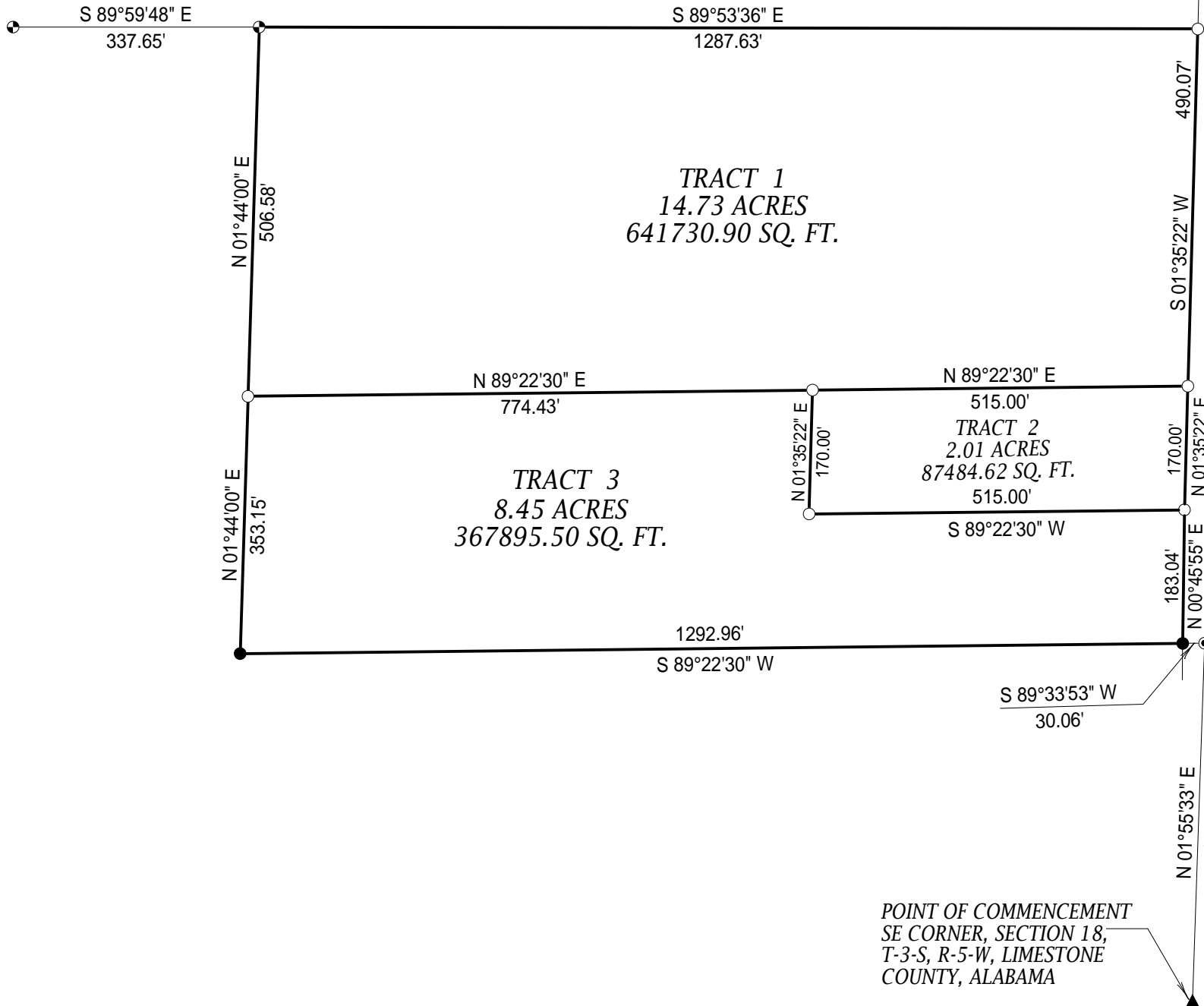
**SEVEN MILE POST ROAD (60' PRESCRIPTIVE RIGHT-OF-WAY)**

**TRACT 1**  
14.73 ACRES  
641730.90 SQ. FT.

**TRACT 2**  
2.01 ACRES  
87484.62 SQ. FT.

**TRACT 3**  
8.45 ACRES  
367895.50 SQ. FT.

POINT OF COMMENCEMENT  
SE CORNER, SECTION 18,  
T-3-S, R-5-W, LIMESTONE  
COUNTY, ALABAMA



**SPECIAL PURPOSE  
AUCTION PLAT FOR  
ROBBIE EATON ESTATE**

**COFFMAN & BEDDOW  
LAND SURVEYORS LLC  
18960 UPPER FORT  
HAMPTON ROAD  
ELKMONT, ALABAMA, 35620  
PHONE (256) 732-4787  
FAX (256) 732-4229**

SCALE: 1" = 200'  
DATE: 09/21/2018  
APPROVED BY: RGC  
DRAWN BY: RGC  
REVISED:  
DRAWING NO. 18-166