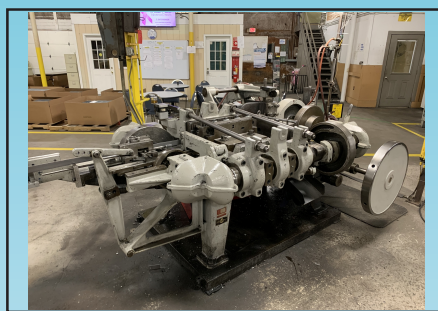


PUBLIC AUCTION



SALE CATALOG KREIDER CORPORATION

2000 S. Yellow Springs St., Springfield, OH 45506
WEDNESDAY, DECEMBER 2, 2020 - 10:00 AM



Inspection: Day Prior from 10:00 AM to 4:00 PM

Auctioneers:

Cincinnati Industrial Auctioneers - License #63-1983-10436

Jeffrey L. Luggen - License #57-1983-33789

Joseph M. Luggen - License #2010-000-026

18% BUYER'S PREMIUM IS IN EFFECT FOR ALL PURCHASES!

ALTHOUGH INFORMATION HAS BEEN OBTAINED FROM SOURCES DEEMED RELIABLE, THE AUCTIONEER MAKES NO WARRANTY OR GUARANTEE EXPRESSED OR IMPLIED, AS TO THE ACCURACY OF THE INFORMATION HEREIN CONTAINED. IT IS FOR THIS REASON THAT BUYERS SHOULD AVAIL THEMSELVES FOR THE OPPORTUNITY TO MAKE INSPECTION PRIOR TO THE SALE.



Sale Under the Management of

CINCINNATI **INDUSTRIAL AUCTIONEERS**

auctioneers | appraisers | since 1961 | cia-auction.com | info@cia-auction.com
2020 Dunlap St., Cincinnati, Ohio 45214 Phone 513-241-9701 Fax 513-241-6760

SYNOPSIS OF THE TERMS OF SALE **KREIDER CORPORATION**

2000 S. Yellow Springs St., Springfield, OH 45506
WEDNESDAY, DECEMBER 2, 2020 – 10:00 AM

REGISTRATION: All Bidders must register at www.bidspotter.com and complete the bidder registration form, removal agreement, sales tax exemption form and COVID-19 statement sent by the Auctioneer after registering for the auction.

"AS IS, WHERE IS": Everything is being sold for cash on an "as is", "where is" basis without warranties expressed or implied on part of the Owner and Auctioneer. There are NO REFUNDS, NO EXCHANGES, NO GUARANTEES or NO WARRANTIES on any item.

ALL SALES ARE FINAL. All Items are sold on a "Where Is" basis with the Purchaser to incur all costs in conjunction with the loading, shipping, and removal of the items from the premises.

DEPOSITS: The Auctioneer may request a deposit at time of registration.

PAYMENTS: ALL INVOICES MUST BE PAID IN FULL WITHIN 24 HOURS AFTER THE AUCTION. Any merchandise not paid for by this specified time will be considered abandoned and may be resold by the auctioneer, any loss incurred in the resale to be borne by the original buyer. All payments must be made by **check or certified funds by express mail, wire transfer or ACH.** Please inquire with auction personnel regarding the acceptance of funding. **NO ONSITE PAYMENTS OR CREDIT CARDS WILL BE ACCEPTED.**

REMOVAL: All Bidders must execute the COVID-19 Health Screening Questionnaire & Self Declaration Sheet. All Bidders must comply with Social Distancing Policies and any other policies as requested by Kreider Corporation and the state of Ohio. All bidders removing their items will be required to wear a face mask.

ALL SMALL ITEMS MUST BE OFF THE PREMISES BY FRIDAY, DECEMBER 4, 2020 at 4:00 PM.

Auctioneer/Owner will not be responsible for any small items after this time.

ALL LARGE ITEMS MUST BE OFF THE PREMISES BY FRIDAY, DECEMBER 11, 2020 at 4:00 PM.

At which time the Auctioneer's representative will leave the premises. After this time, arrangements for removal must be made with the Auctioneer.

"TIME IS OF THE ESSENCE" ALL ITEMS MUST BE OFF THE PREMISES BY FRIDAY, DECEMBER 18, 2020 at 4:00 PM.

At the Owners Discretion, any items remaining after this time will be removed from the premises and stored at the expense of the buyer, considered abandoned and scrapped.

CHECKOUT HOURS:

Thursday, December 3rd - Friday, December 4th From 8:00 AM to 4:00 PM

Monday, December 7th - Friday, December 11th From 8:00 AM to 4:00 PM

Monday, December 14th - Friday, December 18th BY APPOINTMENT ONLY!!

IMPORTANT AUCTION NOTICES:

18% BUYERS PREMIUM IS IN EFFECT FOR ALL PURCHASES!

ALL BUYERS WILL BE REQUIRED TO EXECUTE AN "AUCTION PURCHASE REMOVAL AGREEMENT"

NO MERCHANDISE MAY BE REMOVED WHILE THE SALE IS IN PROGRESS!!!

ALL SALES SUBJECT TO STATE AND LOCAL SALES TAX WHERE APPLICABLE

ALL BIDDERS MUST COMPLY WITH OUR CUSTOMARY "TERMS OF SALE" ATTACHED HERETO,

POSTED AT THE SALE SITE & OUR WEBSITE @ WWW.CIA-AUCTION.COM.

Auctioneer Can Not Assist with Export Documents!

WIRING INSTRUCTIONS

The balance of your invoice may be wired directly to our bank:

PNC Bank, 201 East Fifth Street, Cincinnati, Ohio 45201

Call for Complete Wire Transfer Instructions

PLEASE SPECIFY YOUR BIDDER NUMBER WHEN MAKING YOUR WIRE TRANSFER

NOTE: A BANK WIRE TRANSFER FEE WILL APPLY WHICH IS NOT INCLUDED IN BALANCE DUE OF INVOICE



CINCINNATI INDUSTRIAL AUCTIONEERS

auctioneers | appraisers | since 1961 | cia-auction.com | info@cia-auction.com

2020 Dunlap St., Cincinnati, Ohio 45214 Phone 513-241-9701 Fax 513-241-6760

TERMS OF SALE

NOTICE: All Bidders and other persons attending this sale ("Bidders") agree that they have read and have full knowledge of these terms and agree to be bound hereby. The Bidder identified by the Auctioneer as the high bidder or successful bidder at auction ("successful Bidder") shall have entered into a legally binding contract to purchase the item bid upon ("Lot") at the price and subject to the terms and conditions set forth herein. All determinations, rulings, and adjustments made by the Auctioneer in good faith shall be final, binding, and conclusive upon all Bidders. The term "Auctioneer" herein means Cincinnati Industrial Auctioneers, Inc.

1. **IDENTIFICATION** - All Bidders are required to give full name and addresses at time of registration.
2. **DEPOSIT** - Each successful Bidder will be required to make a deposit in cash or by bank cashier's or certified check of 25 percent (25%) of the successful bid on each Lot at time of knockdown. In default of such deposit, the Lot may be put up again immediately and resold.
3. **TIME OF PAYMENT** - Each successful Bidder shall receive an invoice during or at the conclusion of the auction. All invoices must be paid in full by the close of business on the last day of the auction sale and prior to removing any Lot. Any other arrangements must be made with auctioneer prior to bidding. In the absence of payment or agreement by the auctioneer, title to the Lot shall not transfer to the successful Bidder and such Bidder will lose any right, title or interest such Bidder may have acquired, and the deposit paid, if any, without further notice to such Bidder. The Bidder shall nonetheless remain liable for any damages caused by the Bidder's failure to pay.
4. **REMOVAL** - All purchases must be removed not later than the date specified in the Auction Catalogue and/or announced at the sale. No Lot can, on any account, be removed during the sale. All goods are sold "Where Is." Removal shall be at the expense, risk, and liability of the successful Bidder. Purchases will be released only on presentation of paid invoice. Auctioneer shall not be responsible for Lots not removed within the time allowed, but Auctioneer shall have the option to remove and store at the expense and risk of the successful Bidder any article purchased, but not paid for and removed within the time required.
5. **MANNER OF PAYMENT** - All payments must be made by cash, bank cashier's check or company check with a bank letter of authorization guaranteeing funds to "Cincinnati Industrial Auctioneers, Inc." All checks for deposits and balances due shall be payable to the order of "Cincinnati Industrial Auctioneers, Inc." All invoices must be paid to representatives of the Auctioneer at the auction site unless otherwise announced. The full purchase price on all Lots sold to the same successful Bidder must be paid within the time fixed and before removal of any Lot.
6. **DISCALIMER OF ALL WARRANTIES INCLUDING IMPLIED WARRANTIES OF MERCHANTABILITY AND FITNESS FOR PARTICULAR PURPOSE; CONDITION OF ARTICLES SOLD - The Auctioneer and any owner, seller, or secured party make no warranties express or implied as to merchantability or fitness for purpose whatsoever. All such express or implied warranties are expressly excluded hereby. No oral statement or other writing by any person negates this exclusion. If you think you have received any assurance or warranty of any kind as to a Lot offered in this auction do not bid on such item unless the Auctioneer has signed a writing specifically directed to you and identifying the Lot and stating the modification of this exclusion The Auctioneer shall not be responsible for the correct description, genuineness, authenticity of, or defect in any Lot, and makes no warranty in connection therewith. No sale will be set aside nor allowance made on account of any incorrectness, error in commentary, cataloging, or any imperfection not noted. No deduction, credit or avoidance shall be allowed on damaged articles, all Lots being exposed for public exhibition are purchased and accepted by successful Bidder "AS IS", "WHERE IS" and "WITH ALL FAULTS". Auctioneer makes no warranties or guarantees whatsoever whether written, oral or implied as to quality, quantity, condition, usability, salability, weight, measurement, age, model, mechanical condition, performance or other specifications and all sales made are utterly without recourse.**
7. **CLAIMS** - No Claims will be allowed after removal of Lots from premises.
8. **RESPONSIBILITY FOR NON-DELIVERY**- Auctioneer, any owner, seller or secured party shall not, in any event, be liable to any Bidder for non-delivery of any Lot or for any other matter or thing, other than for the return to the successful Bidder of the deposit or sum paid on said Lot, should the successful Bidder be entitled thereto. This means that if are a successful Bidder and for any reason your Lot is not made available to you, you agree that the damages you may claim for such non-delivery are limited to the amounts you have paid and you waive any



CINCINNATI INDUSTRIAL AUCTIONEERS
auctioneers | appraisers | since 1961 | cia-auction.com | info@cia-auction.com
2020 Dunlap St., Cincinnati, Ohio 45214 Phone 513-241-9701 Fax 513-241-6760

claim for damages for lost profits, opportunity, the value of the Lot in excess of the purchase price, your time, expenses, incidental and consequential damages, all of which are expressly waived.

9. **COMPLIANCE WITH TERMS OF SALE** – In default of payment of invoices in full within the time therein specified, the Auctioneer in addition to all other remedies allowed by law, may retain all monies received as deposit or otherwise, as liquidated damages. Lots not paid for and removed within the time allowed herein may be resold at public or private sale without further notice, and any deficiency, together with all expenses and charges of resale, will be charged to the defaulting successful Bidder.
10. **RISK TO PERSON AND PROPERTY** – Persons attending during exhibition, sale, or removal of Lots assume all risks of damage of or loss to person and property and specifically release the Auctioneer from liability therefore and agree to indemnify and hold the Auctioneer harmless from any loss, claim, liability, cost, or expense caused all or in part by such person(s). Neither the auctioneer nor his principal shall be liable by reason of any defect in or condition of the premises on which the exhibition, sale, or removal of Lots is held.
11. **ADDITION TO OR WITHDRAWAL FROM SALE** – The Auctioneer reserves the right to alter the order of the sale, withdrawal from the sale any of the Lots or parts thereof or to sell at this sale Lots not listed, and also reserves the right to group one or more Lots into one or more selling Lots or to subdivide into two or more selling Lots, or make any combination thereof which Auctioneer in its sole discretion determines. Whenever the best interest of the Seller will be served, the Auctioneer reserves the right to sell Lots in bulk.
12. **SALE BY ESTIMATED WEIGHT, COUNT OR MEASURE** – Where items are sold by estimated weight, count, or measure, the successful Bidder will be invoiced for and required to pay for the estimated weight, count, or measure. If upon delivery any shortage exists, the successful Bidder will receive a credit at the rate of the bid. If there be an excess, the successful Bidder will be required to take and pay for such excess, at the rate of the bid.
13. **DISPUTE BETWEEN BIDDERS/BID INCREMENTS** – If any dispute arises between two or more Bidders, the Auctioneer may decide the same or put the Lot up for sale again at once or resell to the highest Bidder. The Auctioneer may reject a nominal or fractional bid advance in the Auctioneer's sole discretion.
14. **RESERVE** – The Auctioneer reserves the right to reject any and all bids. On Lots upon which there is a reserve, the Auctioneer shall have the right to bid on behalf of the seller, owner or secured party and shall have no obligation to denote or announce such reserve or bid.
15. **RECORDS** – The record of sale kept by the Auctioneer and bookkeeper will be taken as final in the event of any dispute.
16. **AGENCY** – The Auctioneer is acting as agent only and is not responsible for the acts of its principals.
17. **SALES TAX** – All sales are subject to state and local taxes, which will be collected from the successful Bidder unless a proper exemption certificate including tax-exempt number is presented at the time of payment.
18. **BUYER'S PREMIUM** – The Auctioneer in its sole discretion may impose a Buyer's Premium on any Lots sold. The Buyer's Premium is a percentage that is added to the final purchase price of any Lot.
19. **SHIPPING** – All coolants, oil and fluids must be drained from all machinery and equipment prior to removal. All of the above must be shipped in compliance with state and federal regulations. Unless otherwise expressly provided in writing, preparation and shipment shall be at the sole responsibility and cost of the successful Bidder.
20. **INSURANCE** – All successful Bidders, or their riggers must provide the Auctioneer and the owner of the premises of the sale a certificate of insurance in amounts acceptable to the Auctioneer prior to removal of any Lot.
21. **ADDITIONAL TERMS AND CONDITIONS** – Except as set forth in Section 6 above, the Auctioneer may modify or supplement these terms and conditions of sale by language in the catalog available at the sale site or by announcement at the start of the sale.



CINCINNATI INDUSTRIAL AUCTIONEERS

auctioneers | appraisers | since 1961 | cia-auction.com | info@cia-auction.com
2020 Dunlap St., Cincinnati, Ohio 45214 Phone 513-241-9701 Fax 513-241-6760

AUCTION PURCHASE & REMOVAL AGREEMENT

KREIDER CORPORATION

2000 S. Yellow Springs St., Springfield, OH 45506

WEDNESDAY, DECEMBER 2, 2020 – 10:00 AM

All purchasers of items at the Kreider Corporation auction conducted by Cincinnati Industrial Auctioneers, Inc. hereby agree to the following:

All purchasers agree to abide by the "Terms of Sale" as listed on our website and posted at the auction premises. The Auctioneer and Owner make no warranties express or implied as to merchantability, fitness for purpose, or condition of the articles being sold. All such expressed or implied warranties are expressly excluded hereby. All Bidders must execute the COVID-19 Health Screening Questionnaire & Self Declaration Sheet. All Bidders must comply with Social Distancing Policies and any other policies as requested by Kreider Corporation and the state of Ohio. Any bidder removing items will be required to wear a face mask.

All items are purchased on an "**As Is, Where Is**" basis, with the purchaser to incur all costs in conjunction with the loading, shopping and removal of the items from the premises. ALL EQUIPMENT MUST BE REMOVED IN A WORKMAN LIKE MANNER AND ALL UTILITIES MUST BE CAPPED. ALL ANCHOR BOLTS MUST BE CUT OFF AT FLOOR LEVEL. ALL OILS AND COOLANTS MUST BE REMOVED FROM MACHINES PRIOR TO REMOVAL. All items are available for removal during normal business hours through **Friday, December 11, 2020 at 4:00 PM** at which time our representatives will leave the premises. After this time arrangements for removal must be made by appointment with Auctioneer.

"TIME IS OF THE ESSENCE" regarding the removal of items from the premises. All items must be removed by **Friday, December 18, 2020 at 4:00 PM**. Any items remaining after this time will be removed and stored at the expense of the buyer or considered abandoned and scrapped. NO EXCEPTIONS!

All purchasers and/or riggers of machinery MUST provide Cincinnati Industrial Auctioneers, Inc., and Kreider Corporation a certificate of insurance in the amount of \$2,000,000.00 prior to removal. Cincinnati Industrial Auctioneers, Inc., and Kreider Corporation must be named on the policy as co-insurer.

There are NO REFUNDS, NO EXCHANGES, NO GUARANTEES OR NO WARRANTIES on any item.
ALL SALES ARE FINAL.

Accepted By Purchaser:

Company Name

Buyer Number / Bidspotter Email

Signature

Date

Kreider Corporation
December 2, 2020



CINCINNATI INDUSTRIAL AUCTIONEERS

auctioneers | appraisers | since 1961 | cia-auction.com | info@cia-auction.com
2020 Dunlap St., Cincinnati, Ohio 45214 Phone 513-241-9701 Fax 513-241-6760

CINCINNATI INDUSTRIAL AUCTIONEERS, INC.
COVID-19 Health Screening Questionnaire & Self Declaration

CIA values the health and welfare of our customers, employees, and business partners. We will take all necessary precautions to avoid against the spread of the COVID-19 Virus. For the latest of information regarding the COVID-19 virus and precautions to avoid the spread please review the CDC's website at (<https://www.cdc.gov/coronavirus/2019-ncov/index.html>).

CIA will ask you to confirm that the following statements are correct prior to entering any auction facility for inspection or removal of purchases:

1. You have not knowingly had any contact with a person that has COVID-19 in the last 14 days.
2. You have not been out of the U.S., or in any risk sites in the last 14 days.
3. You do not have any respiratory systems (cold, cough or shortness of breath), **do not have a fever of 100°F**, or have been fever free for at least 48 hours WITHOUT the use of any fever-reducing or other symptom relief medication.

AUCTION INSPECTION & REMOVAL GUIDELINES

1. Take your temperature before coming to the facility. **IF YOU ARE SICK STAY HOME!**
2. Please bring your own Personal Protective Equipment to the facility. This includes Safety Glasses, Face Mask & Gloves. You will not be allowed on the premises without these items.
3. Please practice safe Social Distancing while in the facility. Keep at least 6' apart from other individuals.
4. A limited number of customers will be allowed in the facility at one time. Please remain in your vehicle until it is your turn to enter the facility.
5. Truck drivers MUST remain outside the facility.
6. Other safety precautions to remember; wash your hands frequently, do not touch your face and sneeze or cough into your arm or a Kleenex.
7. Additional onsite policies will be posted at the sale site.

Temperature: _____

Signature: _____ Buyer #: _____ Date: _____

Cell #: _____ Email: _____

Catalog for Auction: Kreider Corp.

This catalog is meant merely as a guide. The Auctioneers do not warrant the accuracy, genuineness, authenticity, description, weight, count or measure of any of the lots specified herein.

Lot Num	Qty.	Description	Lot Num	Qty.	Description
1	1	1/4" CAPACITY MODERN GOBBLER MODEL SN41 ELECTRIC PORTABLE NIBBLER	31	3	12" DIGITAL READ-OUT HEIGHT GAGES
2	1	1" ENCO MODEL AS-130 BENCH BELT SANDER	32	2	12" DIGITAL / DIAL HEIGHT GAGES WITH (1) 10" VERNIER HEIGHT GAGE
3	1	1" ENCO MODEL AS-130 BENCH BELT SANDER	33	1	(LOT) COMBINATION SQUARE SETS **NOT ALL COMPLETE SETS**
4	1	1 ENCO MODEL AS-130 BENCH BELT SANDER	34	1	PIN GAGE MODEL M1, M2 AND M3 PIN GAGES, .061" - .625" **NOT COMPLETE SETS**
5	2	10 GAUGE CAPACITY MAKITA MODEL JN3201 RIGHT ANGLE ELECTRIC NIBBLERS WITH (1) STRAIGHT SHAFT NIBBLER	35	1	.0610" - .2500" VERMONT GAGE PIN GAGES WITH .061 - .250 PLAN PLUG GAGES **NOT COMPLETE SETS**
6	1	9" BLACK AND DECKER HEAVY DUTY RIGHT ANGLE GRINDER	36	1	PRATT AND WHITNEY SET NO. 390-F GAGE BLOCKS WITH .050 - 4" GAGE BLOCKS **NOT COMPLETE SETS**
7	1	HK POTTER HEAVY DUTY PNEUMATIC BOLT CUTTER	37	1	(LOT) MISCELLANEOUS INSPECTION GAGES
8	1	(LOT) MISCELLANEOUS PNEUMATIC POWER HAND TOOLS	38	1	4" X 12-1/2" DIAMETER RAVA CYLINDRICAL SQUARE WITH 3" X 6-1/2" CYLINDRICAL SQUARE
9	1	(LOT) MISCELLANEOUS SIZE LONG AND SHORT HANDLE BOLT CUTTERS	39	4	6" X 6" X 2" THICK X 8" HIGH GRANITE BASE DIAL INDICATOR STANDS
10	1	(LOT) MISCELLANEOUS SIZE LONG AND SHORT HANDLE BOLT CUTTERS	40	5	MAGNETIC BASE V-BLOCKS
11	1	(LOT) LARGE CAPACITY COMBINATION WRENCHES	41	2	MISCELLANEOUS CAP POSTAL SCALES
12	1	(LOT) MISCELLANEOUS HAMMERS	42	1	HUPPERT MODEL 439DL INFI-TROL ELECTRIC OVEN, 4" X 3-1/2" X 10" DEEP OVEN SIZE, 110 VOLTS
13	1	(LOT) MISCELLANEOUS HAND TOOLS	43	1	6 KVA POWERTRAN 3-PHASE GENERAL PURPOSE TRANSFORMER
14	1	(LOT) MISCELLANEOUS C-CLAMPS	44	1	26" X 30" DAVIDSON MODEL 730 LIGHT TABLE
15	1	(LOT) (12) PIECE 12" - 0" OUTSIDE MICROMETER SET	45	1	48-1/2" X 120-1/2" X 37-1/2" HIGH HEAVY DUTY WELDED STEEL BENCH **DELAYED REMOVAL - PICKUP 12-9-2020**
16	1	FEDERAL MODEL EMD 301P-3 (D) DRO SNAP GAGE WITH BASE	46	1	30" X 68" X 34" HIGH X 3/8" THICK STEEL TOP PLATE HEAVY DUTY WELDED STEEL WORK BENCH **DELAYED REMOVAL - PICKUP 12-9-2020**
17	1	ACCUPRO / ROCKWELL HARDNESS TESTER	47	1	30" X 68" X 34" HIGH X 3/8" THICK STEEL TOP PLATE HEAVY DUTY WELDED STEEL WORK BENCH **DELAYED REMOVAL - PICKUP 12-9-2020**
18	1	0 - 1,000 LB. RANGE RIMAC BENCH SPRING TESTER	48	1	30" X 68" X 34" HIGH X 3/8" THICK STEEL TOP PLATE HEAVY DUTY WELDED STEEL WORK BENCH **DELAYED REMOVAL - PICKUP 12-9-2020**
19	10	8" DIGITAL READ-OUT CALIPERS			
20	6	6" DIGITAL READ-OUT CALIPERS			
21	9	12" DIAL TYPE CALIPERS			
22	12	8" DIAL TYPE CALIPERS			
23	10	6" DIAL TYPE CALIPERS			
24	1	(LOT) MISCELLANEOUS SIZE DIAL CALIPERS			
25	1	62 MM AND 22 MM VERNIER CALIPERS			
26	1	24" DIGITAL READ-OUT HEIGHT GAGE			
27	1	24" DIGITAL READ-OUT HEIGHT GAGE			
28	1	24" DIGITAL READ-OUT HEIGHT GAGE			
29	1	20" DIGITAL READ-OUT HEIGHT GAGE			
30	1	20" DIGITAL READ-OUT HEIGHT GAGE			

Catalog for Auction: Kreider Corp.

Lot Num	Qty.	Description	Lot Num	Qty.	Description
49	1	14" DIAMETER KODAK MODEL 2A OPTICAL COMPARATOR; S/N 3321251, WITH QUADRA-CHEK 200 DIGITAL READ OUT, 6-1/2" X 21-1/2" SLOTTED TABLE AND PORTABLE STAND	66	1	1,000 LB. CAPACITY (APPROX.) MANUAL HAND CRANK DIE LIFT TABLE, 19" X 29" TABLE
			67	2	FREIGHT DOCK TWO-WHEEL HAND TRUCKS
50	1	24" X 36" X 4" THICK BLACK GRANITE SURFACE PLATE WITH STAND	68	1	(2) 32" AND (2) 24" INDUSTRIAL DUTY PEDESTAL AIR CIRCULATORS
51	1	18" X 24" X 4" THICK TWO-LEDGE GRAY GRANITE SURFACE PLATE	69	1	(LOT) MISCELLANEOUS STEEL PARTS BINS
			69A	1	36" X 65" X 24" SCHWAB PORTABLE HEAVY DUTY COMBINATION SAFE
52	1	18" X 24" X 4" THICK BLACK GRANITE SURFACE PLATE	70	1	15 HP CONTINENTAL HYDRAULICS POLY PAC HYDRAULIC POWER UNIT, 55 GALLON TANK
53	1	12" X 18" X 3" THICK BLACK GRANITE SURFACE PLATE	71	1	SKID MISCELLANEOUS FATIGUE MATS
54	2	9" X 12" X 3" THICK BLACK GRANITE SURFACE PLATES	72	1	14" WIDE X 72" LONG CLEATED BELT INCLINE POWER CONVEYOR WITH 10" WIDE X 120" X 64" LONG GRAVITY FEED ROLLER CONVEYOR
55	1	18" X 24" X 4" THICK CAST IRON SURFACE PLATE WITH STAND	73	2	PORTABLE ELECTRIC CEMENT MIXERS CONVERTED TO CORN COB MEDIA FINISHING MACHINE WITH SIFTING TABLE AND (8) BAG CORN COB MEDIA
56	1	(1) 24" X 36" X 35" HIGH AND (1) 20" X 36" X 35" HIGH HEAVY DUTY STEEL WELDED TABLES	74	1	ROLLING TOOL CHEST AND LONG HANDLE TOOLS
57	3	18" X 24" X 35-1/2" HIGH FOUR DRAWER TOOL CARTS	75	1	JORCO MODEL SSDM TOGGLE-AIR BENCH TOP PRESS; S/N 7082, DUAL LEVER CONTROLS
58	1	1,500 LB. CAPACITY CROWN MODEL 15BS 12 VOLT ELECTRIC WALK-BEHIND PALLET STACKER; S/N 26976, WITH BUILT IN CHARGER, 54" LIFT HEIGHT, 26" FORKS AND 25" X 26" PLATFORM ATTACHMENT	76	1	JORCO MODEL SSDM TOGGLE-AIR BENCH TOP PRESS; S/N 5030, DUAL LEVER CONTROLS
59	1	1,000 LB. CAPACITY PRESTO MODEL M378 MANUAL HYDRAULIC DIE LIFT CART; S/N 132900, 30" X 32" PLATFORM	77	1	JORCO MODEL SSDM TOGGLE-AIR BENCH TOP PRESS; S/N 5620, DUAL LEVER CONTROLS
60	1	1,000 LB. CAPACITY (APPROX.) PRESTO MANUAL HYDRAULIC DIE LIFT CART; S/N N/A, 24" X 24" PLATFORM	78	1	JORCO MODEL SSDM TOGGLE-AIR BENCH TOP PRESS; S/N 5834, DUAL LEVER CONTROLS
61	1	1,000 LB. CAPACITY PRESTO MODEL M366 MANUAL HYDRAULIC DIE LIFT CART; S/N V22633-100, 30" X 32" PLATFORM	79	1	JORCO MODEL SSDM TOGGLE-AIR BENCH TOP PRESS; S/N 6610, DUAL LEVER CONTROLS
62	1	1,000 LB. CAPACITY REGAL MODEL RP54 MANUAL HYDRAULIC DIE LIFT CART; S/N 56125, 24" X 24" PLATFORM	80	1	JORCO MODEL SSDM TOGGLE-AIR BENCH TOP PRESS; S/N 5633, DUAL LEVER CONTROLS
63	1	1,000 LB. CAPACITY (APPROX.) VESTIL MANUAL HYDRAULIC DIE LIFT CART **OUT OF SERVICE** **NEEDS HYDRAULIC CYLINDER**	81	1	JORCO MODEL SSDM TOGGLE-AIR BENCH TOP PRESS; S/N 6483, DUAL LEVER CONTROLS
64	1	2,000 LB. CAPACITY ECONOMY MODEL ET MANUAL HAND CRANK DIE LIFT TABLE; S/N EH69476, 24" X 36" TABLE	82	1	JORCO MODEL SSDM TOGGLE-AIR BENCH TOP PRESS; S/N N/A, DUAL LEVER CONTROLS
65	1	2,000 LB. CAPACITY (APPROX.) MANUAL HAND CRANK DIE LIFT TABLE, 24" X 36" TABLE			

Catalog for Auction: Kreider Corp.

Lot Num	Qty.	Description	Lot Num	Qty.	Description
83	1	JORCO MODEL SSDM TOGGLE-AIR BENCH TOP PRESS; S/N N/A, DUAL LEVER CONTROLS	109	1	24" X 60" X 34" HIGH HEAVY DUTY WELDED STEEL WORK BENCH WITH 29" X 58" X 36" HIGH STEEL FRAME WOOD TOP BENCH
84	1	JORCO MODEL SSDM TOGGLE-AIR BENCH TOP PRESS; S/N N/A, DUAL LEVER CONTROLS	110	5	**DELAYED REMOVAL - PICKUP 12-9-2020** SECTIONS MISCELLANEOUS SIZE STEEL SHELVING
85	1	JORCO MODEL SSDM TOGGLE-AIR BENCH TOP PRESS; S/N N/A, DUAL LEVER CONTROLS	111	1	12 TON X 24" BANTAM MODEL B-212 STAND MOUNTED PRESS BRAKE; S/N N/A, (2) 4-WAY DIES
86	1	JORCO MODEL SSDM TOGGLE-AIR BENCH TOP PRESS; S/N N/A, DUAL LEVER CONTROLS	112	1	22" NIAGARA MODLE 22F KICK SHEAR
87	1	HUGOLD MODEL 12AKS BENCH TOP AIR PRESS; S/N 20044	113	1	3/8" CHUCK INTERNATIONAL BENCH TOP HORIZONTAL DRILLING MACHINE
88	1	PRODUCTO MACHINE BENCH TOP MANUAL HAND PRESS	114	1	HECK INDUSTRIES MODEL 3C BENCH TOP TRACE-A-PUNCH MACHINE
89	1	38" X 144" X 36" HIGH HEAVY DUTY WELDED STEEL PRESS TABLE, WITH 6" VISE **DELAYED REMOVAL - PICKUP 12-9-2020**	115	1	6" STAND MOUNTED DOUBLE END GRINDER
90	1	30" X 68" X 34" HIGH X 1/2" STEEL TOP PLATE WELDED STEEL TABLE **DELAYED REMOVAL - PICKUP 12-9-2020**	116	1	20" X 36" X 35" HIGH HEAVY DUTY STEEL CART
91	1	30" X 90" X 35" HIGH WOOD FRAME STEEL TOP BENCH	117	1	1 HP BRIDGEPORT 8-SPEED VERTICAL MILLING MACHINE; S/N 156583, 80-2,720 SPINDLE RPMS, 9" X 42" TABLE, NEWALL DIGITAL READ OUT
92	1	FAMCO NO. 15 KICK PRESS	118	1	1 HP BRIDGEPORT 8-SPEED VERTICAL MILLING MACHINE; S/N 162204, 80-2,720 SPINDLE RPMS, 9" X 42" TABLE, NEWALL DIGITAL READ OUT
93	1	FAMCO NO. 10 KICK PRESS	119	1	1 HP BRIDGEPORT 8-SPEED VERTICAL MILLING MACHINE; S/N 75111, 80-2,720 SPINDLE RPMS, 9" X 36" TABLE
94	1	FAMCO NO. 10 KICK PRESS	119A	1	BRIDGEPORT QUILL
95	1	FAMCO NO. 80 KICK PRESS	120	1	2 HP MFG UNKNOWN 12-SPEED VERTICAL MILLING MACHINE; S/N VD110734, 8" X 29" TABLE, 125-2,500 SPINDLE SPEEDS
96	1	FAMCO NO. 80 KICK PRESS	121	1	1/2 HP SNOW MODEL DR-1-S 8-SPEED VERTICAL TAPPING MACHINE; S/N M40255-976, 1,725-3,450 RPMS, 10" X 18" TABLE, SNOW MODEL 200 TAP HEAD, FOOT PEDAL
97	1	FAMCO NO. 80 KICK PRESS	122	1	HASKINS TYPE 1CAP VERTICAL DRILL / TAPPING MACHINE; S/N T12238, WITH TAPMATIC 30X TAPPING HEAD, FOOT PEDAL, 1,725 SPINDLE RPMS, 220 VOLTS, 3 PHASE, 1/2 HP
98	1	MYERS MODEL UNKNOWN KICK PRESS	123	1	HASKINS TYPE 3 CAM VERTICAL DRILL / TAPPING MACHINE; S/N T13142, 1/2 HP, 3-PHASE, 220 VOLTS, FOOT PEDAL
99	1	EXCELSIOR NO. 15 KICK PRESS	124	1	15" WALKER-TURNER BENCH MOUNTED DRILL; S/N N/A
100	1	EA ADAMS NO. 1 KICK PRESS	125	1	20" CRAFTSMAN CONTRACTOR SERIES FLOOR DRILL; S/N N/A
101	1	DAVIS SEWING MACHINE CO. MODEL UNKNOWN KICK PRESS			
102	1	SHOP BUILT PNEUMATIC PORTABLE PUNCH PRESS WITH EXTRA TOOLING			
103	1	SHOP BUILT PNEUMATIC TABLE MOUNTED STEEL ROD BENDER			
104	1	14" DIAMETER DI-ARCO NO. 2 BENCH MANUAL TOP STEEL WIRE BENDER			
105	1	11" DIAMETER DI-ARCO NO. 1-A BENCH TOP MANUAL STEEL WIRE BENDER			
106	1	11" DIAMETER DI-ARCO NO. 1-A BENCH TOP MANUAL STEEL WIRE BENDER			
107	1	6" DIAMETER DI-ARCO NO. 1 BENCH TOP MANUAL STEEL WIRE BENDER			
108	2	MISCELLANEOUS SMALL CAPACITY BENCH TOP MANUAL WIRE BENDERS			

Catalog for Auction: Kreider Corp.

Lot Num	Qty.	Description	Lot Num	Qty.	Description
126	1	3' ARM X 7" COLUMN CINCINNATI LATHE AND TOOL RADIAL ARM DIRLL; S/N 3LA1A1Z-97, 52-1505 SPINDLE RPMS, 20" X 20" X 14" T-SLOTTED DRILL BOX	142	1	3' ARM X 7" COLUMN AMERICAN TOOL WORKS RADIAL ARM DRILL; S/N 53532, 16" X 22" X 19" T-SLOTTED DRILL BOX
127	1	16" X 40" KENT MODEL KGS410AHD HYDRAULIC SURFACE GRINDER; S/N 890871, PUSH BUTTON CONTROL CABINET	143	1	24" EDLUND SINGLE SPINDLE HEAVY DUTY PRODUCTION DRILL; S/N N/A
128	1	6" X 17" THOMPSON HAND FEED SURFACE GRINDER; S/N F46258, 220 VOLTS, 3-PHASE, 1-1/2 HP MOTOR	144	1	30" EDLUND MODEL 2F-15 HEAVY DUTY SINGLE SPINDLE PRODUCTION DRILL; S/N 213
129	1	6" X 12" PARKER-MAJESTIC HAND FEED SURFACE GRINDER; S/N NA, 220/440 VOLTS, 3-PHASE, 1-1/2 HP SPINDLE MOTOR	145	1	17" DELTA FLOOR DRILL
130	1	BROWN AND SHARPE NO. 510 HAND FEED SURFACE GRINDER; S/N 523-510-150, 6" X 12-3/4" WALKER MAGNETIC CHUCK AND CAIBNET STYLE DUST COLLECTOR	146	1	(LOT) MISCELLANEOUS SIZE DRILL WITH SLANTED RACK INDEX BIN WITH (2) COUNTER HEIGHT CABINETS
131	1	PARKER-MAJESTIC NO. 2 HAND FEED SURFACE GRINDER; S/N N/A, 6" X 18" WALKER MAGNETIC CHUCK, 220/440 VOLTS, 3-PHASE, 1 HP SPINDLE MOTOR	147	1	19" POWERMATIC MODEL 87 VERTICAL BAND SAW; S/N 65-5715, WITH BLADE WELDER
132	1	6" X 18" KENT MODEL SGS-618M HAND FEED SURFACE GRINDER; S/N 38461 (NEW 10-1999), 6" X 18" KENT MAGNETIC CHUCK, 240 VOLTS, 3-PHASE	148	1	RAMCO MODEL RS-90P HORIZONTAL BANDSAW
133	1	6" X 18" PARKER-MAJETSTIC NO. 2 HAND FEED SURFACE GRINDER; S/N _____, 6" X 18" WALKER MAGNETIC CHUCK, 220/440 VOTLS, 3-PHASE, 1 HP SPINDLE MOTOR	149	1	CHICAGO RIVET MODEL 912 RIVET MACHINE; S/N 8413
134	1	6" X 18" REID MODEL 618HR HAND FEED SURFACE GRINDER; S/N 17888, 6" X 18" WALKER MAGNETIC CHUCK, 230 / 460 VOLTS, 3-PHASE, 1 HP SPINDLE MOTOR	150	1	30" BENCH MOUNT ELECTRIC POWER ROLLER **OUT OF SERVICE**
135	1	(LOT) MISCELLANEOUS GRINDING WHEELS	151	1	12" PNEUMATIC BENCH MOUNT FINGER BRAKE
136	2	1-1/2 HP ENCO DUST COLLECTORS **LOCATED IN SHED BEHIND BUILDING** **NOTICE: SHED STAYS WITH BUILDING**	152	1	12" HEAVY DUTY MILL VISE
137	1	(LOT) MISCELLANEOUS SHOP SUPPLIES WITH TWO-DOOR STORAGE CABINET	153	1	6" ENCO MODEL 425-7261 MILL VISE
138	1	13" X 30" LOGAN MODEL 6510H GEARED HEAD ENGINE LATHE; S/N 81569, 10" FOUR-JAW CHUCK, 1-1/2" THRU HOLE	154	1	5" MILL VISE
139	1	SOUTH BEND MODEL A GEARED HEAD ENGINE LATHE; S/N N/A	155	1	4" SWIVEL BASE MILL VISE
140	1	MOORE MODEL B18 JIG BORER; S/N B1852, ANALAM WIZARD 150 PLUS DRO, 11" X 24" TABLE, 230 VOLT, 3-PHASE	156	1	8" SLIDING BAR DRILL VISE
141	1	SUPERIOR HONE MODEL J2 HONING MACHINE; S/N 1-6409, WITH EXTRA HONE TOOLING	157	1	6" SLIDING BAR DRILL VISE
			158	1	6" DRILL VISE
			159	1	(LOT) MISCELLANEOUS PRECISION VISES
			160	1	DUMORE NO. 4G TOOL GRINDER
			161	2	5" X 10" MAGNETIC CHUCKS
			162	1	CONVEX RADII 0-2-1/4" RADIUS AND ANGLE DRESSER
			163	1	0. 2-1/4" (APPROX.) RADIUS AND ANGLE DRESSER
			164	1	ECONO-DRESS RADIUS AND ANGLE DRESSER
			165	1	MAKE UNKNOWN RADIUS AND ANGLE DRESSER
			166	1	ATCO PUNCH-MATE #1 SPIN FIXTURE
			167	1	PHASE II 5C SPIN FIXTURE
			168	2	5 C SPIN FIXTURES
			169	1	(LOT) LETTER / NUMBER STAMPS, SMALL ANGLE PLATES
			170	1	(LOT) MISCELLANEOUS MORSE TAPPER DRILL CHUCKS
			171	1	DAKE MODEL 1 BENCH ARBOR PRESS
			172	1	MAKE UNKNOWN BENCH ARBOR PRESS

Catalog for Auction: Kreider Corp.

Lot Num	Qty.	Description	Lot Num	Qty.	Description
173	1	DUMONT MINUTE MAN NO. 10 STANDARD SET KEYWAY BROACHS	188B	1	12" ARM X 39" WIDE X 72" HIGH MECO SINGLE SIDED CANTILEVER RACK
174	1	43" X 109" X 34" HIGH HEAVY DUTY WELDED STEEL WORKBENCH WITH 8" VISE **DELAY REMOVAL - PICKUP 12-9-2020**	189	1	50 TON SCOTCHMAN INDUSTRIES MODEL 5014-TM IRONWORKER; S/N 1514K0906, 50 TON PUNCH CAPACITY, ANGLE / FLAT SHEAR, RECTANGLAR NOTCHER, 3 HP MOTOR, 230 VOLTS, 3-PHASE WITH EXTRA 12" SHEAR ATTACHEMNT AND TOOLCHEST WITH TOOLING
175	1	L-W AND ECLIPSE BENCH MOUNTED DEMAGNETISER WITH CABINET	190	1	MAGNUS MIJI-LIF MODEL MALH-LVI SIZE 4 DIP TANK WASHER; S/N 47429
176	2	1" ENCO BRAND NEW BENCH SANDERS	191	1	47" X 72" POWER EXHAUST FUME HOOD **BUYER MUST CAP EXHAUST DUCT PIPE**
177	1	26" X 58" X 37" HIGH MAPLET TOP MACHINISITS DESK	192	1	DELETE
178	1	26" X 58" X 37" HIGH MAPLET TOP MACHINISITS DESK	193	1	DELETE
179	1	(LOT) MISCELLANEOUS SPRINGS AND NITROGEN CYLINDERS	194	1	DELETE
180	1	26" X 58" X 37" HIGH MAPLE TOP MACHINISITS DESK WITH 4" VISE	195	1	DELETE
181	1	CVC TECHNOLOGIES MODEL CVC 400 II LABLER; S/N 9910372	196	1	WESTINGHOUSE WELDING POWER SOURCE WITH WIRE FEEDER
182	1	LINE - X BED SPRAY PROTECTIVE COATING SYSTEM, GRACO REACTOR E-XP2 PLURAL COMPONENT PROPORTIONER, SPARY HOSE AND GUN, DIGITAL CONTROLS, GRACO T1 TRANSFER PUMPS AND SUPPLIES WITH CABINET	197	1	2,500 LB. CAPACITY ARONSON MODEL HS2V WELDING POSITIONER
183	1	1 TON CAPACITY X 12' ARM (APPROX.) X 13" OVERALL HEIGHT FREE STANDING JIB CRANE, WITH 1 TON CAPACITY KONE MODEL XN10 PENDENT CONTROL CHAIN HOIST	198	1	FANUC MODEL ARC MATE 100 ROBOT WELDING CELL TYPE A05V-1210-B201; S/N R96475885 (NEW 4-1996), WITH LINCOLN ELECTRIC POWERWAVE 450 WELDING POWER SOURCE, FANUC SYSTEM R-J2 CONTROLS, 60" DIAMETER POWERED TURN TABEL, LIGHT CURTAINS, CAGED ENCLOSED, STEEL SKID MOUNTED
184	1	1 TON CAPACITY X 12' ARM (APPROX.) X 13" OVERALL HEIGHT FREE STANDING JIB CRANE, WITH 1 TON CAPACITY KONE MODEL XN10 PENDENT CONTROL CHAIN HOIST	199	1	100 KVA BANNER MODEL 2SPQ100A REBUILT SPOT WELDER; S/N 2869, 18" THROAT, 220/440 VOLTS ENTRON EN1000 CONTROL, DETECT-A-FINGER WARNING PROBE, FOOT PEDAL
185	2	2,500 LB. CAPACITY VESTIL MODEL DLT-25 LIFTING TONGS	200	1	AERCOLOGY MODEL WA-1000CP PORTABLE FUME COLLECTOR; S/N 38219, 460 VOLTS, 3-PHASE, 1 HP MOTOR
186	2	SECTIONS 44" X 106" X 120" HIGH TEAR DROP STYLE ADJUSTABLE BEAM WOOD / STEEL DECK PALLET RACK, (14) 5" FACE BEAMS, (3) UPRIGHTS, (42) HD ANGLE IRON DECKING SLATS	201	1	30 KVA LORS MODEL BMW200/30 BENCH MOUNT SPOT WELDER; S/N 8843287, WITH GE SCHMIDT WELD COUNT SYSTEM, DETECT-A-FINGER WARNING PROBE, SCHMIDT RADIATOR, CINCINNATI FAN POWER FUME COLLECTOR, FOOT PEDAL
187	1	24" X 96" X 42" HIGH HEAVY DUTY MULTI-LEVEL WELDED STEEL RACK WITH 12-DRAWER COUNTER HEIGHT MAPLE TOP CABINET	202	1	MFG AND KVA UNKNOWN SPOT WELDER; S/N N/A, ASSET #028, SCHMIDT RADIATOR, DETECT-A-FINGER WARNING PROBE, CINCINNATI FAN POWER FUME COLLECTOR, FOOT PEDAL
188	1	(LOT) MISCELLANEOUS STRUCTURAL STEEL	203	1	(LOT) WELDING SUPPLIES WITH STORAGE CABINET
188A	1	1,800 LB. CAPACITY TOLEDO MODEL 31-1821-FC PLATFORM SHIPPING SCALE; S/N 6318			

Catalog for Auction: Kreider Corp.

Lot Num	Qty.	Description	Lot Num	Qty.	Description
204	1	44" X 120" X 96" HIGH CHAMPION MATERIAL HANDLING DUAL LEVEL POWER ROLLER CONVEYOR	221	1	(LOT) MISCELLANEOUS FOUR-SLIDE TOOLING AND PARTS
205	3	SECTIONS 24" X 48" X 72" HIGH MULTI-LEVEL HARDWARE STORAGE SHELVING (800 LB. CAPACITY PER SHELF)	222	1	30" X 104" X 34" HIGH X 1/4" THICK STEEL TOP PLATE HEAVY DUTY WELDED FRAME TABLE
206	2	SECTIONS 50" X 106" X 120" HIGH TEAR DROP STYLE ADJUSTABLE BEAM PALLET RACK, (12) 5" FACE STEP BEAMS, (48) HD ANGLE IRON DECK SLATS, (6) SHEETS PLYWOOD, (4) 10' UPRIGHTS, WITH (1) SECTION 30" X 78" X 120" HIGH ADJUSTABLE BEAM WOOD / STEEL DECK PALLET RACK	223	10	SECTIONS MISCELLANEOUS SIZE LIGHT DUTY STEEL SHELVING
207	1	1,000 LB. CAPACITY X 10' ARM X 130" OVERALL HEIGHT HANDLING SYSTEMS FREE-STANDING JIB CRANE WITH 1,000 LB. CAPACITY JET PENDENT CONTROL CHAIN HOIST	224	1	88 TON X 10' US INDUSTRIAL MACHINERY MODEL US 8810 HYDRAULIC PRESS BRAKE; S/N W2007-163
208	1	1/4" NILSON MODEL 4F FLAT STRIP FOUR-SLIDE MACHINE; S/N 84840 (NEW 2-1969)	225	1	57-1/2" 4-WAY PRESS BRAKE DIE WITH 27" TOP DIE
209	1	3/16" NILSON MODEL 3F FLAT STRIP FOUR-SLIDE MACHINE; S/N 88720	226	1	10'6" FOUR-WAY PRESS BRAKE DIE
210	1	3/16" NILSON MODEL 3F FLAT STRIP FOUR-SLIDE MACHINE; S/N 82995	227	1	(LOT) MISCELLANEOUS TOP AND BOTTOM DIES
211	1	3/16" NILSON MODEL 3F FLAT STRIP FOUR-SLIDE MACHINE; S/N 61950, ORDER # 61648	227A	1	**30"X 96" 33" HIGH STEEL WORKBENCH WITH VISE **DELAYED REMOVAL - PICKUP 12-9-2020**
212	1	1/8" NILSON MODEL S2F FLAT STRIP FOUR-SLIDE MACHINE; S/N 82985	228	1	30" X 68" X 34" HIGH X 7/16" THICK STEEL TOP PLATE WELDED FRAME STEEL TABLE
213	1	3/32" NILSON MODEL S1 FLAT STRIP FOUR-SLIDE MACHINE; S/N S-1-52992, ORDER # 46584-7	229	1	275 TON AIDA MODEL NC2-25(1) DOUBLE CRANK GAP FRAME PRESS; S/N 10525-1045, 6.69" STROKE, 25-55 STROKES PER MINUTE, 17.7" SHUT HEIGHT, 4.7" ADJUSTMENT, 82.6" X 27.5" RAM, 106.2" X 29.9" BOLSTER
214	1	3/32" NILSON MODEL S1 FLAT STRIP FOUR-SLIDE MACHINE; S/N 52992-S, ORDER # 47698-3	230	1	30" DALLAS MODEL DRF-430-RH SERVO FEED; S/N 20120, .135" X 30" CAPACITY, .194" X 12" CAPACITY
215	1	5/16" LEWIS MODEL 2CV WIRE STRAIGHT AND CUT MACHINE WITH 8' RACK; S/N 590-6 (NEW 10-1974), WITH 56" DIAMETER, 1 HP ELECTRIC POWER UNCOILER	231	1	220 TON AIDA MODEL C2-20(2) DOUBLE CRANK GAP FRAME PRESS; S/N 10520-0546, 9.8" STROKE, 35 STROKES PER MINUTE, 95" X 33" BOLSTER, 19.6" SHUT HEIGHT, 4.3" ADJUSTMENT
216	1	SKID MISCELLANEOUS FOUR-SLIDE WIRE GUIDES	232	1	24" PERFECTO MODEL 600-24 SERVO FEED; S/N 85019, WITH CONTROL CABINET AND PAK LUBE SYSTEM
217	1	SKID MISCELLANEOUS FOUR-SLIDE GEARS	232A	1	10,000 LB. CAPACITY DALLAS MODEL 24X60X10,000 COIL CRADLE / STRAIGHTENER; S/N 16438, STRAIGHTENER MODEL 82333; S/N 16439
218	6	MISCELLANEOUS HORIZONTAL WIRE UNCOILERS	233	1	176 TON STAMTEC MODEL G2-160-S DOUBLE CRANK GAP FRAME PRESS; S/N 0249, 7.87" STROKE, 30-55 STROKES PER MINUTE, 17.7" SHUT HEIGHT, 3.93" ADJUSTMENT (NEW 1994)
219	5	MISCELLANEOUS HORIZONTAL WIRE UNCOILERS	234	1	DALLAS MODEL DWF400X18RH AIR FEED; S/N 18695, .375 MAX CAPACITY
220	1	3 HP REEVES SIZE 5000-F-12 VARIABLE SPEED MOTO DRIVE	235	1	7" WIDE MFG UNKNOWN DUAL COIL HEAVY DUTY COIL CRADLE

Catalog for Auction: Kreider Corp.

Lot Num	Qty.	Description	Lot Num	Qty.	Description
236	1	60 TON CLEVELAND MODEL 40G-48-60 DOUBLE CRANK GAP FRAME PRESS; S/N 19319, 3.5" STROKE, 5.375 MINIMUM SHUT HEIGHT, 9,000 MAX SHUT HEIGHT, 45 STROKES PER MINUTE	251	1	88 TON STAMTEC MODEL G1-80-S SINGLE CRANK GAP FRAME PRESS; S/N 0311, 5.9" STROKE, 35-80 STROKES PER MINUTE, 12.99" SHUT HEIGHT, 3.15" ADJUSTMENT (NEW 7-14-1994)
237	1	220 TON STAMTEC MODEL G1-200 SINGLE CRANK GAP FRAME PRESS; S/N S001190, 20-50 STROKES PER MINUTE, 7.87" STROKE, 17.72" SHUT HEIGHT, 4.3" ADJUSTMENT, 32" X 55" BOLSTER (NEW 2002)	252	1	66 TON STAMTEC MODEL G1-60S SINGLE CRANK GAP FRAME PRESS; S/N 0158, 4.72" STROKE, 45-90 STROKES PER MINUTE, 11.8" SHUT HEIGHT, 2.95" ADJUSTMENT (NEW 1-1988)
238	1	18" COOPER-WEYMOUTH MODEL SMX18H SERVO FEED; S/N 34921, WITH STAND MOUNTED CONTROL CABINET	253	1	12" P/A INDUSTRIES MODEL SRFX-12U SERVO ROLL FEEDER; S/N 28180104, WITH P/A INDUSTRIES ULTRA ADVANTAGE CONTROLS AND PAX MODEL 225P LUBE SYSTEM
239	1	4,000 LB. CAPACITY ROWE MODEL 4020-J6 COIL CRADLE; S/N 18286, 60" OD MAX	254	1	2,000 LB. CAPACITY (APPROX.) BLISS MODEL 20-7M COIL CRADLE / STRAIGHTENER; S/N N/A
240	1	176 TON ALINTECH MODEL MDL-C-160 SINGLE CRANK GAP FRAME PRESS; S/N N/A (PRESS #9), 40 STROKES PER MINUTE, 7.87" STROKE, 15.74" SHUT HEIGHT, 31" X 49" BED	255	1	66 TON STAMTEC MODEL G1-60 SINGLE CRANK GAP FRAME PRESS; S/N 0362, 4.73" STROKE, 35-90 STROKE PER MINUTE, 11.82" SHUT HEIGHT, 2.96" ADJUSTMENT (NEW 2-8-1996)
241	1	DALLAS MODEL DWF-400 AIR FEED; S/N 17272, 500 X 18 MAX, 250 X 18 MINIMUM	256	1	6" DALLAS MODEL D200 AIR FEED; S/N 12070, .125" X 6" X 12" CAPACITY
242	1	3,000 LB. CAPACITY ROWE MODEL 3020J COIL CRADLE; S/N 23603, 20" WIDE COIL, 48" OD	257	1	3,000 LB. CAPACITY ROWE MODEL 3015J COIL CRADLE; S/N 13031, 15" MAX WIDTH, 48" OD MAX
243	1	165 TON AIDA MODEL NC1-150 (2) SINGLE CRANK GAP FRAME PRESS; S/N 10215-8294, 7.87" STROKE, 30-55 STROKES PER MINUTE, 15.74" SHUT HEIGHT, 3.39" ADJUSTMENT, 27.5" X 22.8" RAM, 46" X 29.9" BOLSTER (NEW 1995)	258	1	66 TON AIDA MODEL C1-6 (2) SINGLE CRANK GAP FRAME PRESS; S/N 00206-3266, 5.5" STROKE, 70 STROKES PER MINUTE, 11.8" SHUT HEIGHT, 2.7" SLIDE ADJUSTMENT, 48.8" X 20.4" BED
244	1	18" JAYBIRD MODEL J20-1818 AIR FEED; S/N R2749	259	1	30" DALLAS MODEL D325-30X30 RH AIR FEED; S/N 17480, .105 X 30W CAPACITY
245	1	88 TON AIDA MODEL NC1-80 (2) SINGLE CRANK GAP FRAME PRESS; S/N 00208-6439, 6.29" STROKE, 40-75 STROKES PER MINUTE, 12.59" SHUT HEIGHT, 3.14" ADJUSTMENT, 37.4" X 23.6" BED AREA	260	1	3,000 LB. CAPACITY ROWE MODEL 3015-J COIL CRADLE; S/N 17317, 15" MAX WIDTH, 48" OD DIAMETER MAX
246	1	30" DALLAS MODEL D325-30X30-RH AIR FEED; S/N 1748, .105" X 30" CAPACITY	261	1	55 TON ROUSSELLE MODEL G1-55 & 8 GAP FRAME PRESS; S/N P32269, 6" STROKE, 19-1/2" SHUT HEIGHT, 4" SLIDE ADJUSTMENT, 60 STROKES PER MINUTE, 18" X 28" BED
247	1	18" DALLAS MODEL DCCD-1860-P3 COIL CRADLE; S/N 10124	262	1	121 TON STAMTEC MODEL G1-110 SINGLE CRANK OBI PRESS; S/N G1-1101-001, 8" STROKE, 45 STROKES PER MINUTE, 12.83" SHUT HEIGHT, 3.54" SLIDE ADJUSTMENT
248	1	88 TON AIDA MODEL C1-8 (2) SINGLE CRANK GAP FRAME PRESS; S/N 00208-4301, 6.2" STROKE, 60 STROKES PER MINUTE, 52.3" X 23.6" BOLSTER, 21.2" X 18.1" SLIDE, 12.6" SHUT HEIGHT, 3" ADJUSTMENT			
249	1	12" CAPACITY AIR FEEDS MODEL WAF 1 AIR FEED; S/N 800708			
250	1	17" JACO COIL CRADLE; S/N N/A			

Catalog for Auction: Kreider Corp.

Lot Num	Qty.	Description	Lot Num	Qty.	Description
263	1	12" LITTELL MODEL 300-12 SERVO FEED; S/N 95278-05, WITH LITTELL CONTROL CABINET, .157 MAX THICKNESS, 12" WIDE COIL	275	1	40 TON ROUSSELLE MODEL 4 OBI PRESS; S/N EAA-8373, 3" STROKE, 4.00" ADJUSTMENT, 8.500" SHUT HEIGHT, AIR CLUTCH, TRIAD CONTROLS
264	1	110 TON BLISS MODEL C110 OBI PRESS; S/N H62448 (NEW 1970), PEDESTAL MOUNTED CONTROLS, LIGHT CURTAINS, AIR CLUTCH	276	1	40 TON ROUSSELLE MODEL 4 OBI PRESS; S/N EASE-7136, 3" STROKE, 4.00" ADJUSTMENT, 8.500" SHUT HEIGHT, AIR CLUTCH, TRIAD CONTROLS
265	1	90 TON CLEARING MODEL 90 OBI PRESS; S/N 54-9049, 6" STROKE, 13-3/4" SHUT HEIGHT, 4" SLIDE ADJUSTMENT, 90 STROKES PER MINUTE	277	1	35 TON DANLY NO. 35 OBI PRESS; S/N 35585-10373, 3" STROKE, 10" SHUT HEIGHT, 120 STROKES PER MINUTE, 2-1/4" ADJUSTMENT
266	1	80 TON SOUTH BEND MODEL 80-FW-AC OBI PRESS; S/N 79007, 4" STROKE, 15.5" SHUT HEIGHT, 3.5" SLIDE ADJUSTMENT, 85 STROKES PER MINUTE, 36" X 24" BED AREA, 16-1/4" X 13-1/2" RAM AREA	278	1	32 TOM HEIM NO. 3 OBI PRESS; S/N H3550, 3" STROKE, 10" SHUT HEIGHT, 2.5" ADJUSTMENT, 140 STROKES PER MINUTE, AIR CLUTCH
267	1	70 TON HEIM MODEL 7G OBI PRESS; S/N H-3551, 4" STROKE, 4.00" SLIDE ADJUSTMENT, 12.5" SHUT HEIGHT, 55 STROKES PER MINUTE, CABINET TYPE CONTROLS	279	1	30 TON ROUSSELLE NO. 3 OBI PRESS; S/N EASA-9557, 3" STROKE, 2.00" ADJUSTMENT, 8.250" ADJUSTMENT, AIR CLUTCH
268	1	60 TON ROUSSELLE NO. 6 OBI PRESS; S/N 6824, 4" STROKE, 4.00" SLIDE ADJUSTMENT, 9.750 SHUT HEIGHT	280	1	30 TON MINSTER NO. 3 OBI PRESS; S/N 7091, 2" STROKE, 1.75" ADJUSTMENT, 6.875" ADJUSTMENT, TRIAD CONTROLS, AIR CLUTCH
269	1	60 TON VERNON MODEL D60 OBI PRESS; S/N 24997, 4" STROKE, 90 STROKES PER MINUTE, 14" SHUT HEIGHT, 3" RAM ADJUSTMENT	281	1	15 TON ROUSSELLE NO. 2E OBI PRESS; S/N 23224, 2" STROKE, 12" SHUT HEIGHT, 170 STROKES MINUTE, 2.5" ADJUSTMENT, AIR CLUTCH
270	1	60 TON BLISS MODEL C-60 OBI PRESS; S/N HP45388, 3.00" ADJUSTMENT, 9.000 SHUT HEIGHT, 60 STROKES PER MINUTE	282	1	24" AEI SYSTEMS MODEL APS9324 STRAIGHTENER; S/N 1723-Z
271	1	55 TON HEIM MODEL 5 OBI PRESS; S/N H-3552, 3" STROKE, 13" SHUT HEIGHT, 120 STROKES PER MINUTE, 4" SLIDE ADJUSTMENT, AIR CLUTCH, TRAIID CONTROLS	283	1	18" COE MODEL CPRF-218 FEEDER / STRAIGHTENER; S/N 1094166
272	1	50 TON HEIM MODEL 5A-OBI-BG OBI PRESS; S/N 2866	284	1	P/A INDUSTRIES MODEL SRF2000 SERVO FEEDER WITH STRAIGHTENER; S/N 28180104 AND P/A INDUSTRIES ULTRA EDGE SERVO ROLL FEEDS CONTROLS
273	1	45 TON SOUTH BEND MODEL 45-EW-AC OBI PRESS; S/N 83007, 3" STROKE, 11-1/4" SHUT HEIGHT, 3" ADJUSTMENT, 125 STROKES PER MINUTE, 28" X 18" BED, 11-3/8" X 11-13/16" RAM AREA	285	1	6" WIDE MFG UNKNOWN ELECTRIC POWER FEEDER; S/N N/A
274	1	45 TON SOUTH BEND MODEL 45-FW-AC OBI PRESS; S/N 81007, 3" STROKE, 11-1/4" SHUT HEIGHT, 3" ADJUSTMENT, 125 STROKES PER MINUTE, 28" X 18" BED, 11-3/8" X 11-13/16" RAM AREA, AIR CLUTCH	286	1	MORRELL JOB NO. MIU000617 STAND ALONE PORTABLE CONTROL CABINET WITH REX ROTH INDRAMAT SYSTEM 200 MODEL B TJ04 DIGITAL READOUT
			287	1	16" DURANT TOOL CO COIL CRADLE / STRAIGHTENING MACHINE; S/N N/A
			288	1	18" JAYBIRD MODEL CC1848 COIL CRADLE; S/N R-2237
			288A	1	DELETE
			289	1	4,000 LB. CAPACITY (APPROX.) PORTABLE EXPANDING MANDREL UNCOILER; S/N N/A, WITH LOOP CONTROL LIMIT SWITCH

Catalog for Auction: Kreider Corp.

Lot Num	Qty.	Description	Lot Num	Qty.	Description
290	1	4,000 LB. CAPACITY AMERICAN STEEL LINE MODEL 60 EXPANDING MANDREL UNCOILER; S/N 7064 (NEW 2-1984), WITH P/A INDUSTRIES MODEL LC-2 LOOP CONTROL LIMIT SWITCH	308	1	32" X 10-1/8" X 11" HIGH UNIVERSAL DIE WITH 23-1/4" X 11-5/8" X 10-1/4" HIGH UNIVERSAL DIE
			309	1	(1) 23-1/4" X 11-1/2" X 12" HIGH AND (1) 25-1/2" X 10" X 11-1/2" HIGH UNIVERSAL DIES
291	1	4,000 LB. CAPACITY AMERICAN STEEL LINES MODEL 60 EXPANDING MANDREL UNCOILER; S/N 8298 (NEW 6-1988), WITH P/A INDUSTRIES MODEL LC-2 LOOP CONTROL LIMIT SWITCH	310	1	21-1/2" X 20-1/2" X 7-3/8" HIGH UNIVERSAL DIE
			310A	3	(1) 19" X 30" X 4", (1) 19" X 30" X 3", AND (1) 19" X 30" X 2" DRILLED AND TAPPED PRESS BEDS
292	1	4,000 LB. (APPROX.) MFG UNKNOWN DOUBLE-END EXPANDING MANDREL UNCOILER; S/N N/A, WITH 10" WIDE STRAIGHTENER	310B	3	(1) 18" X 28" X 6", (1) 11-3/4" X 14-3/4" X 5" AND (1) 15" X 20" X 2" DRILLED AND TAPPED PRESS BEDS
			311	1	(LOT) LARGE QUANTITY MISCELLANEOUS HEAVY DUTY HOLD DOWNS
293	1	2,500 LB. CAPACITY AMERICAN STEEL LINE MODEL 60 EXPANDING MANDREL UNCOILER; S/N 7606 (NEW 12-1980)	312	1	OPEN
			313	1	OPEN
294	1	1,000 LB. CAPACITY AMERICAN STEEL LINE MODEL 60 EXPANDING MANDREL UNCOILER; S/N 8260 (NEW 11-1980)	314	1	OPEN
			315	1	OPEN
295	1	1,000 LB. CAPACITY AMERICAN STEEL LINE MODEL 60 EXPANDING MANDREL UNCOILER; S/N 8259 (NEW 11-1980)	316	1	OPEN
			317	1	OPEN
			318	1	OPEN
296	1	1,000 LB. CAPACITY (APPROX.) MOTORIZED UNCOILER; S/N N/A			****LOTS 320 THRU 326 ARE SURPLUS TO A LOCAL STAMPING AND ARE LOCATED OFFSITE - THESE ITEMS ARE ALL WITHIN A 15- MINUTE DRIVE OF THE AUCTION SITE - INSPECTION AND REMOVAL IS BY APPOINTMENT ONLY WITH JEFFJR@CIA-AUCTION.COM****
297	1	50" DIAMETER ACCRA-WIRE CONTROLS MODEL F-200 MOTORIZED HORIZONTAL UNCOILER; S/N F2000415061 (NEW 2005), 220 VOLT, SINGLE PHASE			
298	1	50" DIAMETER ACCRA-WIRE CONTROLS MODEL F-200 MOTORIZED HORIZONTAL UNCOILER; S/N F2000528992 (NEW 1999)	320	1	300 TON BLISS MODEL SE2-300-84-48 SSSDC PRESS; S/N NA, 20 SPM, 12" STROKE, 11.75" ABJ. 32" X 41" ** LOCATED AT 900 W. LEFFEL LANE, SPRINGFIELD, OH **
299	1	25-1/2" X 72" X 6" HIGH DRILLED AND TAPPED PRESS BED	321	1	300 TON BLISS MODEL SE2-300-84-48 SSSDC PRESS; S/N L50095-2, 32 SPM, 12" STROKE, 11.75" ABJ. 32" X 41" WINDOW, 7" THICK BOLSTER ** LOCATED AT 900 W. LEFFEL LANE, SPRINGFIELD, OH **
300	1	28" X 82" X 5" THICK DRILLED AND TAPPED PRESS BED			
301	1	24" X 48" X 4" THICK DRILLED AND TAPPED PRESS BED			
302	1	19-1/4" X 39-1/2" X 3" THICK DRILLED AND TAPPED PRESS BED	322	1	220 TON AIDA MODEL C1-20 SINGLE CRANK GAP FRAME PRESS; S/N 00220 0348. 6.2" STROKE, 35-65 SP19, 22" X 69" BEB, 24" X 33" RAM, 16.1" SHUT HEIGHT, 4.3" ABJ. ** LOCATED AT 100 S. YELLOW SPRINGS ROAD, SPRINGFIELD, OH **
303	1	37" X 27" X 3" THICK T-SLOTTED DRILLED AND TAPPED PRESS BED			
304	1	25-5/8" X 39-3/4" X 6-1/4" THICK DRILLED AND TAPPED PRESS BED, 10-1/4" DIAMETER CENTER HOLE	323	1	37" TIMESAVERS MODEL 137-IHPMES WIDE BOLT SANDER; S/N 268027 ** LOCATED AT 2100 S. YELLOW SPRINGS ROAD, SPRINGFIELD, OH **
305	1	34" X 30" X 6" HIGH DRILLED AND TAPPED PRESS BED			
306	1	59" X 11-3/4" X 15-1/4" HIGH UNIVERSAL DIE			
307	1	39" X 10-1/4" X 10-1/2" HIGH UNIVERSAL DIE			

Catalog for Auction: Kreider Corp.

Lot Num	Qty.	Description	Lot Num	Qty.	Description
324	1	7700 LB. SONO RUKA MODEL UCW-2040 DE UNCOILER; .019"/.023" X 15-3/4" WIDE, 70" OD && LOCATED AT 1919 CROFT ROAD REAR, SPRINGFIELD, OH **	340	1	300 LB. CAPACITY CROWN MODEL WAV50-118 24 VOLT WORK ASSIST VEHICLE; S/N 9A167756, 118" PLATFORM HEIGHT, 28" X 32" PLATFORM
325	1	36" FEEDLEASE MODEL RFLX37 COMBINATION FEEDER/STRAIGHTENER, 7-ROLL STRAIGHTENER, 0.20" AT 36", .090" AT 28" WIDE && (LOCATED AT 1919 CROFT ROAD REAR, SPRINGFIELD, OH) **	341	1	350 LB. CAPACITY SKYJACK MODEL SJP M12 PUSH AROUND ONE PERSON ELECTRIC WORK PLATFORM; S/N 03265, 12'3" PLATFORM LIFT HEIGHT, 12 VOLT SYSTEM (NEW 11-1997)
326	1	10 TON ROWE MODEL 20060DSV UNCOILER; S/N 15954, 60" CAP ** (LOCATED AT 1305 INNISFALLEN AVENUE, SPRINGFIELD, OH) **	342	1	(LOT) MISCELLANEOUS POWERED ROLLER CONVEYOR LIFT TABLES
327	1	CORROTEC 3-POSITION ROTARY TABLE AUTOMATIC PLASTISOL DIP COATING MACHINE; S/N N/A, MACHINE #1 WITH CORRETEC DRO CONTROL STATION	343	1	MFG UNKNOWN SEMI-AUTOMATIC SHRINK WRAP MACHINE; S/N N/A, 20" MAX FILM ROLL, 48" APPROX. MAX WRAP HEIGHT, 48" X 48" PLATFORM
328	1	CORROTEC 3-POSITION ROTARY TABLE AUTOMATIC PLASTISOL DIP COATING MACHINE; S/N N/A, MACHINE #2 WITH WALL MOUNTED CONTROL CABINET	344	1	5,000 LB. CAPACITY HYSTER MODEL E50XM2-27, 36 VOLT ELECTRIC TWO-STAGE MAST, CUSHION TIRE LIFT TRUCK; S/N F108V111660, 131" LIFT HEIGHT, 84" MAST HEIGHT, MONOTROL DRIVE CONTROLS, CASCADE FORK POSITIONER, SIDE SHIFT, 42" FORKS, 5,671 HOURS SHOWING WITH BATTERY CHARGER **SEE AUCTION PERSONEL FOR LOCATION OF CHARGER**
329	2	26" X 26" X 8" DEEP PORTABLE COATING TANKS	345	1	5,000 LB. CAPACITY HYSTER MODEL E50XM2-27 36 VOLT ELECTRIC THREE-STAGE MAST CUSHION TIRE LIFT TRUCK; S/N F108V2756A, 189" LIFT HEIGHT, 82" MAST HEIGHT, MONOTROL DRIVE CONTROLS, RIGHT LINE FORK POSITIONER, SIDE SHIFT, CUSHION TIRE, 42" FORKS, 8,591 HOURS SHOWING, WITH BATTERY CHARGER **SEE AUCTION PERSONEL FOR LOCATION OF CHARGER**
330	1	(LOT) MISCELLANEOUS COATING HANGERS AND HEATER ELEMENTS	346	1	5,000 LB. CLARK MODEL ECG25 36 VOLT ELECTRIC THREE-STAGE MAST CUSHION TIRE LIFT TRUCK; S/N ECG358-0008-6754FB, 189" LIFT HEIGHT, 82" MAST HEIGHT, 42" FORKS, SIDE SHIFT, FORK POSITIONER, HOURS N/A, WITH BATTERY CHARGER **SEE AUCTION PERSONEL FOR LOCATION OF CHARGER**
331	1	4,500 LB. CAPACITY (APPROX.) GLOBAL SPRING-ACTUATED PALLET CAROUSEL SKID POSITIONER	347	1	5,000 LB. CAPACITY HYSTER MODEL ESOXL-33 36 VOLT ELECTRIC THREE-STAGE MAST CUSHION TIRE LIFT TRUCK; S/N C108V08092J, SIDE SHIFT, MONTROL DRIVE CONTROLS, 187" LIFT HEIGHT, 81" MAST HEIGHT, 48" FORKS, 8,753 HOURS SHOWING **THIS LIFT HAS NO BATTERIES**
332	1	4,500 LB. CAPACITY (APPROX.) GLOBAL SPRING-ACTUATED PALLET CAROUSEL SKID POSITIONER			
333	1	6,000 LB. CAPACITY VESTIL TMS-60DC TILT MASTER ELECTRIC / HYDRAULIC STRADDLE TRUCK; S/N S663639, PENDANT CONTROL			
334	1	6,000 LB. VESTIL MODEL TILT MASTER ELECTRIC / HYDRAULIC STRADDLE TRUCK; S/N 120539			
335	1	4,000 LB. CAPACITY ECONO LIFT ELECTRIC / HYDRAULIC TILT STRADDLE TRUCK; S/N N/A			
336	1	4,000 LB. ECONO LIFT ELECTRIC / HYDRAULIC TILT STRADDLE TRUCK; S/N N/A			
337	1	1,000 LB. CAPACITY ELECTRO-MAG 8-DISC MAGNETIC SHEET LIFTER			
338	1	1,000 LB. CAPACITY EAC 8-DISC MAGNETIC SHEET LIFTER			
339	1	3 TON CAPACITY STRATTON MODEL 301 SPECIAL MANUAL HYDRAULIC PORTABLE HOIST			

Catalog for Auction: Kreider Corp.

Lot Num	Qty.	Description	Lot Num	Qty.	Description
348	1	4,500 LB. CAPACITY HYSTER MODEL N45XMR3 STAND-UP 36 VOLT ELECTRIC NARROW AISLE THREE-STAGE MAST STRADDLE LIFT TRUCK; S/N G138N017082, 242" LIFTH HEIGHT, 108" HIGH MAST, 42" FORKS, SIDE SHIFT, TILT FORK, 5,232 HOURS SHOWING WITH BATTERY CHARGER **SEE AUCTION PERSONEL FOR BATTERY LOCATION**	357	1	(LOT) (9) SECTIONS 108" X 42" X 180" AND (2) SECTIONS 96" X 42" X 180" ADJUSTABLE BEAM PALLET RACKS
			358	6	42" X 180" UPRIGHTS
			359	1	SECTIONS 96" X 42" X 180" ADJUSTABLE BEAM PALLET RACK
			360	4	SECTIONS 108" X 42" X 180" ADJUSTABLE BEAM PALLET RACK
			361	4	SECTIONS 108" X 42" X 180" ADJUSTABLE BEAM PALLET RACK
349	1	4,000 LB. HYSTER MODEL N4035 STAND-UP 36 VOLT ELECTRIC THREE-STAGE MAST STRADDLE LIFT TRUCK; S/N C138D02389K, 2/3" LOAD HEIGHT, 96" MAST HEIGHT, 42" FORKS, SIDE SHIFT, FORK TILT, 1,632 HOURS SHOWING, WITH BATTERY CHARGER **SEE AUCTION PERSONEL FOR BATTERY LOCATION**	362	6	SECTIONS 96" X 42" X 180" ADJUSTABLE BEAM PALLET RACK
			363	6	SECTIONS 96" X 42" X 180" ADJUSTABLE BEAM PALLET RACK
			364	6	SECTIONS 108" X 42" X 180" ADJUSTABLE BEAM PALLET RACK
			365	3	SECTIONS 96" x 42" x 180" ADJUSTABLE BEAM PALLET RACK
350	1	6,000 LB. TOYOTA MODEL 8FGC30 LP GAS CUSHION TIRE LIFT TRUCK; S/N 19441, 3-STAGE MAST, 87" MAST HEIGHT, 187 LIFT HEIGHT, CAB ENTRANCE, 17,023 HOURS, FINGERTIP CONTROLS	366	3	SECTIONS 96" x 42" x 180" ADJUSTABLE BEAM PALLET RACK
			367	2	SECTIONS 96" x 42" x 180" ADJUSTABLE BEAM PALLET RACK
351	1	6,000 LB. TOYOTA MODEL 8FGC30 LP GAS CUSHION TIRE LIFT TRUCK; S/N 62260, 3-STAGE MAST, 87" MAST HEIGHT, 187 LIFT HEIGHT, CAB ENTRANCE, 12,306 HOURS, FINGERTIP CONTROLS	368	2	SECTIONS 96" x 42" x 180" ADJUSTABLE BEAM PALLET RACK
			369	33	SECTIONS 48" X 18" X 174" STEEL CLIP TOGETHER SHELVES
			370	33	SECTIONS 48" X 18" X 174" STEEL CLIP TOGETHER SHELVES
352	1	4,000 LB. MITSUBISHI MODEL FGC25N LP GAS SOLID PNEUMATIC TIRE LIFT TRUCK; S/N AF82F42088, 3-STAGE MAST, 83" MAST HEIGHT, 187" LIFT HEIGHT, FRONT DUMP ATTACHMENT ON CARRIAGE, 10,825 HOURS	371	3	SECTIONS 106" X 44" X 114" X 180" UPRIGHTS ADJUSTABLE BEAM PALLET RACKS
			372	8	MISCELLANEOUS 2-5 DRAWER FILE CABINETS
353	1	4,000 LB. MITSUBISHI MODEL FGC25N LP GAS CUSHION TIRE LIFT TRUCK; S/N AF82F41998, 3-STAGE MAST, 83" MAST HEIGHT, 187" LIFT HEIGHT, FRONT DUMP ATTACHMENT ON CARRIAGE, 8,263 HOURS	373	8	MISCELLANEOUS STEEL SHELVES TO 36" X 18" X 75"
			373A	1	60" X 36" WOOD TABLE, END TABLES AND CHAIRS
354	1	OPEN			
355	1	**3,000 LB. CATERPILLAR MODEL GC15 LP GAS THREE-STAGE MAST CUSHION TIRE LIFT TRUCK; S/N 2EM03376, SIDE SHIFT, 42" FORKS, 190" LIFT HEIGHT, 82" MAST HEIGHT, 5,022 HOURS SHOWING **NO LP TANK - PROPERTY OF AUCTION COMPANY** **NOTICE - DELAYED REMOVAL - PICKUP 12-9-2020**			
356	1	MOTREC MODEL EG250 ELECTRIC MAINTENANCE CART; S/N 1138188, BUILT IN CHARGER, 2,000 HOURS			

Catalog for Auction: Kreider Corp.

Lot Num	Qty.	Description	Lot Num	Qty.	Description
374	1	** (Lot) Raw Material inventory located throughout facility** Subject to bid confirmation, Owner will have 24 hours to accept or reject high bid.** Approx. 221,000 Lbs. Steel, 13,000 Lbs. Stainless, 1,000 Lbs. Aluminum. See website for complete inventory. CONDITION OF ARTICLES SOLD - The auctioneer shall not be responsible for the correct description, genuineness, authenticity of, or defect in any lot, and makes no warranty in connection therewith. No sale will be set aside nor allowance made on account of any incorrectness, error in commentary, cataloging, or any imperfection not noted. No deduction allowed on damaged articles, all goods being exposed for public exhibition, are purchased and accepted by Buyer "AS IS", "WHERE IS" and "WITH ALL FAULTS". Auctioneer makes no warranties or guarantees whatsoever whether written, oral or implied as to quality, quantity, condition, usability, salability, weight, measurement, year model, mechanical condition, performance or other specifications and without recourse.	409	1	(LOT) MISCELLANEOUS DISASSEMBLED PALLET RACK INCLUDING UPRIGHTS TO 108" X 64" AND CROSSBEAMS TO 120"
			410	1	OUT OF SERVICE SEAM WELDER
			411	4	MISCELLANEOUS STEEL RACKS
			412	1	38" X 64" A-FRAME PARTS CART
			413	12	26" X 16" X 24" JARKE MINI MODEL SIZE DX STACKABLE MATERIAL RACKS, 7,500 LB. CAPACITY PER OPENING
			414	4	36" X 24" STEEL TABLE AND CARTS
			415	4	58" X 28" STEEL FRAME BENCHES, (2) WITH VISES
			416	1	54" X 30" HEAVY DUTY STEEL WELDING BENCH WITH 4" VISE
			417	1	(LOT) STEEL BENCHES AND CARTS
			418	2	30" X 60" STEEL CARTS
			419	1	30" X 60" STEEL CARTS
			420	1	30" X 60" STEEL CARTS
			421	2	24" X 36" CARTS
			422	2	MISCELLANEOUS CARTS TO 48" X 72"
			423	1	(4) SECTIONS - (2) 44" X 54" X 40" AND (2) 32" X 40" X 35" STEEL MESH BASKETS
			424	14	36" X 42" X 32" (APPROX.) STEEL TUBS
401	14	SECTIONS 50" X 50" X 180" HEAVY DUTY ADJUSTABLE DIE STORAGE RACK SYSTEM, 25,000 LB. CAPACITY PER SECTION WITH (87) REMOVABLE PALLET TYPE SHELVES	425	14	42" X 52" X 37" (APPROX.) STEEL TUBS
			426	18	44" X 54" X 30" (APPROX.) STEEL TUBS
			427	7	40" X 60" X 27" (APPROX.) STEEL TUBS
402	14	SECTIONS 50" X 50" X 180" HEAVY DUTY ADJUSTABLE DIE STORAGE RACK SYSTEM, 25,000 LB. CAPACITY PER SECTION WITH (87) REMOVABLE PALLET TYPE SHELVES	428	38	36" X 48" X 24" (APPROX.) STEEL TUBS
			429	32	36" X 38" X 30" (APPROX.) STEEL TUBS
			430	10	MISCELLANEOUS SIZE STEEL TUBS
			431	16	40" X 50" X 30" (APPROX.) STEEL TUBS
403	1	(2) SECTIONS - (1) 90" X 42" X 96" AND (1) 106" X 42" X 120" HEAVY DUTY ADJUSTABLE BEAM PALLET RACKS	432	66	30" X 40" X 30" (APPROX.) STEEL TUBS
			433	16	32" X 34" X 29" (APPROX.) STEEL TUBS
			434	60	26" X 32" X 26" (APPROX.) STEEL TUBS
			435	21	MISCELLANEOUS SIZE STEEL TUBS
404	1	SECTION 96" X 42" X 114" HEAVY DUTY ADJUSTABLE BEAM PALLET RACKS **DELAYED REMOVAL - PICKUP 12-16-2020**	436	9	30" X 36" X 28" (APPROX.) STEEL TUBS
			437	19	MISCELLANEOUS COLLAPSIBLE PLASTIC GAYLORDS TO 45" X 48" X 20"
405	1	(5) SECTIONS - (4) 128" X 48" X 111" AND (1) 106" X 42" X 106" HEAVY DUTY ADJUSTABLE BEAM PALLET RACKS	438	17	TILTED TUB RACKS
			439	81	MISCELLANEOUS SIZE TUBS
406	1	SECTION 104" X 44" X 120" HEAVY DUTY ADJUSTABLE BEAM PALLET RACKS			
407	1	(3) SECTIONS - (2) 96" X 36" X 112" AND (1) 96" X 36" X 96" HEAVY DUTY ADJUSTABLE BEAM PALLET RACKS			
408	1	(LOT) MISCELLANEOUS DISASSEMBLED PALLET RACK INCLUDING UPRIGHTS TO 108" X 64" AND CROSSBEAMS TO 120"			