

COMPLETE CUSTOM INJECTION MOLDING AND TOOL SHOP, PLASTIC INJECTION MOLDERS BY TOSHIBA, CINCINNATI MILACRON AND BOY TO 725-TON, VERTICAL MOLDING MACHINES, COMPLETE TOOL SHOP, PLASTIC AUXILIARY, SECONDARY FINISHING, SHOP AND SUPPORT EQUIPMENT

BidSpotter.com
 To Become a Qualified Bidder on the Internet
 See Instructions on Page 3

WEBCAST AUCTION

PLANT CLOSED

PERELES BROS., INC.

5840 North 60th Street – Milwaukee, Wisconsin 53218

Just north of downtown Milwaukee

SALE DATE: WEDNESDAY, OCTOBER 28TH AT 9:00 AM LOCAL

INSPECTION: DAY PRIOR FROM 10:00 AM TO 4:00 PM



(10) Toshiba Injection Molding Machines from 60-Ton to 500-Ton



(7) Cincinnati Injection Molding Machines from 55-Ton to 725-Ton



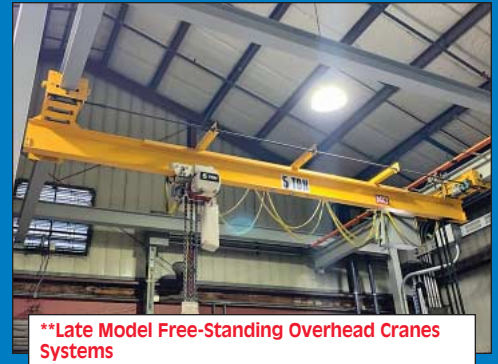
Complete Toolroom



(9) Vertical Injection Molding Machines from 40-Ton to 150-Ton



Temptek Tank and Tower System



**Late Model Free-Standing Overhead Cranes Systems



(10) Matsui Dryer Systems



(25) Plastic Granulators



Trak CNC Bed Mill



Finishing Equipment



(3) Toyota Forklifts



Sale Under The Management Of

CINCINNATI INDUSTRIAL AUCTIONEERS

auctioneers | appraisers | since 1961 | cia-auction.com | info@cia-auction.com

2020 Dunlap St., Cincinnati, Ohio 45214 Phone 513-241-9701 Fax 513-241-6760



PLASTIC INJECTION MOLDERS – HORIZONTAL

725-Ton x 116 Oz. Cincinnati Model VH725-116 PIMM; s/n J07A0194040, No. A13 (1994)

550 Ton x 76 Oz. Cincinnati Model VT550-76 PIMM; s/n T60A0397011 (1997)

550-Ton x 41 Oz. Cincinnati Model VT-550-41 PIMM; s/n T60A0300012 (2000)

500-Ton x 63 Oz. Toshiba Model ISGS-500-27B PIMM; s/n 506801, No. A8 (1995)

310-Ton x 19 Oz. Toshiba Model ISGS310WV21-10B PIMM; s/n 667309, No. A6 (2006)

250-Ton x 21 Oz. Cincinnati Model VH250 PIMM; s/n H02A0195022, No. A7 (1995)

250-Ton x 21 Oz. Cincinnati Model MH250-34 PIMM; s/n H02A0496004 (1996)

150-Ton x 10.2 Oz. Toshiba Model ISF150VL-5B PIMM; s/n 357004/93, No. A12 (1993)

120-Ton x 6.6 Oz. Toshiba Model ISF120VL-3B PIMM; s/n 376504/93, No. A11 (1993)

90 -Ton x 6.6 Oz. Toshiba Model ISF90PVL-3B PIMM; s/n 542601, No. B5 (1995)

90-Ton x 6.6 Oz. Toshiba Model ISF90PVL-3B PIMM; s/n 54270, No. B6 (1995)

90-Ton x 4.8 Oz. Toshiba Model ISF-90PS II-2B PIMM; s/n 210507, No. B10 (1992)

90-Ton x 6.6 Oz. Toshiba Model ISE90PN PIMM; 839M97, No. B12 (1988)

85-Ton x 4.4 Oz. Cincinnati Model VSX85-4.44 PIMM; s/n 3485A21/92-67, No. B7 (1992)

60-Ton x 2.9 Oz. Toshiba Model ISF60PVL-1.5B PIMM; s/n 215410-92, No. B1 (1992)

60-Ton x 2.9 Oz. Toshiba Model ISF60PV10-1.5B PIMM; s/n 670010, No. B2 (1996)

55-Ton x 2.32 Oz. Boy Model 50A PIMM; s/n 59076, No. B8 (2002)

55- Ton x 3.76 Oz Cincinnati Model VSX55-2.27OZ PIMM; s/n 555A0395012, No. B11 (1995)

35-Ton x 1.0 Oz. Boy Model 35A PIMM; s/n 69597, No. B4 (2010)

PLASTIC INJECTION MOLDERS – VERTICAL

150-Ton x 13.4 Oz. / 6.5 Oz.

Trueblood Model TB150B-SPEC Dual Head Rotary Table Vertical PIMM; s/n 70141A and B, No. 3A and 3B (1999)

(2) 90-Ton x 6.7 Oz. Autojectors Model HCR-90 Rotary Table Vertical PIMM; s/n AJ001860-1295, No. V5 (1995), s/n AJ005220-0298 (1998)

80-Ton x 6 Oz. Pyramid Model CS-80 Shuttle Table Vertical PIMM; s/n 2398, No. V8 (2003)

75-Ton x 5.7 Oz. Trueblood Model TB75A-5 Vertical PIMM; s/n 70136, No. V7 (2002)

70-Ton x 4.9 Oz. Autojectors Model HCS70-S Shuttle Table Vertical PIMM; s/n AJ001826-0794, No. V3 (1994)

40-Ton x 2.9 Oz. Autojectors Model HS40-S Shuttle Table Vertical PIMM; s/n AJ001758-0694, No. V1 (1994)

40-Ton x 2.9 Oz. Cincinnati Model CH-40-S Shuttle Table Vertical PIMM; s/n 3947A01/93-2, No. V2 (1993)

40-Ton x 1.76 Oz. Autojectors Model HCR-40-S Rotary Table Vertical PIMM; s/n AJ001720-0594, No. V6 (1994)

ROBOTS

(2) Star Model NPW-1200GII Robots

HY Robotics Nexia 600SY Robot 12144M06001 2012

HY Robotics Nexia-400SY Robot 01541

HY Robotics VECT-400SA Robot 2007 00295

Sailor Autogrip RZ-100 Robot 10039 Refurbished 1993

GRANULATORS

20-HP Nelmor G1220P1 Granulator

15-HP IMS ME-1424 Granulator; s/n 650.91123.1 (Late)

(8) Nelmor G1012P1 Granulators

(8) Ball & Jewell Granulators, Models BP22FX, BP32, CG-1216-SOSX

(6) IMS Granulators to 15-HP

DRYERS AND HOPPERS

(10) Matsui Dryers w/ Hoppers Models MJ3-200/100/75 and HD2-50-R (New as 2015)

(25) Novatec Dryers Models MD-25, HB-25, NPH-100/150/200

(18) Novatec Insulated Hoppers to 200 Lbs.

TEMPERATURE CONTROLLERS

(3) Delta T Systems Oil Temperature Controllers

(30) Delta T Systems Model AB431S Temperature Controllers

(8) Sterlco M9016-J1 Temperature Controllers

(10) Other Various Make and Model Mold Temperature Controllers

PLASTIC AUXILIARY EQUIPMENT

(6) D-M-E Hot Tip Process Controllers

(6) Crizaf Conveyors to 18" Wide

TEST AND INSPECTION EQUIPMENT

Mitutoyo AE122 Coordinate Measuring Machine; s/n 173-1995-01107, w/ Renishaw MH20i Probe Heat, QCT-2000 Software

Arizona Instrument Computer MAX-2000 Moisture Analyzer

(2) 14" Deltronic Optical Comparators

Mitutoyo 600 Height Gauge

PAD PRINTERS AND ULTRASONIC WELDERS

(9) DuKane Ultrasonic Welders;



(1) w/ DPC IV Plus Control & (1) w/ DPC III Control

Auto Tran AT-178 Pad Printer
(2) Auto Tran AT-135 Pad Printers

MILLING MACHINES

5-HP SWI Trak DPM CNC Vertical Bed Type Milling Machine; s/n 95-2110-1995-00001, SWI Proto Trak MX3 Control

3-HP Webb 4VH Proto-Trak CNC Vertical Milling Machine; s/n 5625-1988, 3-HP Power Drawbar, SWI TRAK A.G.E.3 T-Slot Powerfeed Table

2-HP Bridgeport Proto-Trak CNC Vertical Milling Machine; s/n BR265081-1994-00004, with SWI TRAK A.G.E.2 Control

2-HP Bridgeport Series I Vertical Milling Machine; s/n BR250993-1993-00002, with Acu-Rite III 2-Axis DRO

2-HP Bridgeport Series I Vertical Milling Machine; s/n 00003, with Mitutoyo 2-Axis DRO, Troyke Rotary Chuck, T-Slot Table, Machine Vice

1-1/2 HP Bridgeport Vertical Milling Machine; s/n 12BR-162648-1975-00005, with Mitutoyo 2-Axis DRO, Kurt Machine Vice

1-1/2 HP Tree 2UVR Vertical Milling Machine; s/n 900968

ENGINE LATHES

13" x 40" Clausing Colchester Engine Lathe; s/n LMR40G1RFV13761-TR10-00009

(2) Logan Cat. No. 6561H Engine Lathes

GRINDERS - ALL TYPES

12" x 36" Gallmeyer & Livingston No. 55 Surface Grinder; s/n S-55893-1955-TR17-00022

Harig 618 Surface Grinder; s/n TR18-00019

(2) Harig Super 612 Surface Grinders

(2) K.O. Lee Universal Tool Grinders

Deckel Tool Grinders, Grinding Attachments and Related

EDM MACHINES

Chevalier Model ED-252 EDM; s/n 22548-1994-TR39, with Chevalier Bipulse Power Supply and Control, CRT, Keypad

Hansvedt Benchman EDM; s/n TR12-00012, with M-Pulse Model 1025 CNC Power Supply; s/n AE14108

Hansvedt SM-150B EDM; s/n 00010

MISC. TOOLROOM MACHINERY

50-Ton Dake Hydraulic Press; s/n 193527-00418

6-KW Grieve VA-500-E Electric Oven; s/n 19116-AO1-00963, Single Door

Grob NS18 Vertical Band Saw; s/n 83332-TR29

Large Quantity Machine Tooling and Accessories

AIR COMPRESSORS AND RELATED

(2) 50-HP Quincy QSI-245 Rotary Screw Air Compressors; s/n 92419H-1997-AC1-00268, Skid Mounted, 65,752 Hours, s/n 97139-1995-00269, Skid Mounted, 73,463 Hours

Pneumatech ADW-250 Air Dryer; s/n 9706-T126782-ST 2007 00271

Zeks 250NCGA500 Air Dryer; s/n 525402 01518

TANK AND TOWER SYSTEM

1,500 Gallon Tempstek Model PPT-1500-3P-SCC Insulated Water Tank; s/n 167530, V/S Drive, 20-HP (New 2019)

170 Ton Tempstek TP Series Fiberglass Cooling Tower w/ 13' Stand (New 2019)

FORKLIFTS AND SCISSOR LIFT

3,500 Lb. Toyota Model 7FGCSU20 LP Gas Lift Truck; s/n 66110-00338, 3 Stage Mast, Side Shift, 4,041 Hours

(2) 3,500 Lb. Toyota Model 42-6FGCU18 LP Gas Lift Trucks; s/n 60801, 00340 3 Stage Mast, Side Shift, 10,463 Hours, s/n 67367, 3 Stage Mast, 188" Lift, Side Shift, 9,486 Hours

Skyjack SJM3219 Electric Scissor Lift; s/n 00346

BRIDGE CRANE SYSTEMS

**7.5-Ton x 27' Span x 50' Approx. Kone Cranes Free-Standing Overhead Bridge Crane System; s/n 2178173-2002-H17, Top Running, Approx. 17' Under Hook, Approx. 21' Overall

**5-Ton x 25' Span x 120' Approx. KKI-Komo Free-Standing Overhead Bridge Crane System; Underhung, Pendant (New 2002)

**5-Ton Metro Crane Gantry Crane; s/n 16691, with R&M LoadMate LM25 Chain Hoist, Pendant

**2-Ton x 6' Span x 25' Approx. Free-Standing Overhead Bridge Crane System

**Subject to bid confirmation, Subject to withdraw from sale

MISC. MACHINERY AND SUPPORT EQUIPMENT

Cousins LP2100 Stretch Wrapper; s/n 110400-2L-2549-00347

(75) Sections 8' thru 12' Wide x 10' thru 12' High Adjustable Beam Pallet Rack

Maintenance Machinery; Small Welders, Parker Hydraulic Pump, Maintenance Tools and Parts, Oxy-Acetylene Torch Set, Parker Karry Crimp Hose Crimper, Rigid 300 Pipe Threader

Very Clean Shop and Support Equipment; Benches, Fans, Racks, Scales, Ladders, Chain Hoists, Storage Cabinets, Office Furniture and Business Machines, Adjustable Pallet Racks, Drill Presses, Shop Vacuums, Miscellaneous Parts Conveyors, Dump Hoppers, Die Lift Carts, Scissor Lift Tables, Hand Pallet Jacks

WEBCAST AUCTION

Plant Closed
PERELES BROS., INC.

5840 North 60th Street
Milwaukee, Wisconsin 53218
Just north of downtown Milwaukee

SALE DATE:
Wed., October 28th
STARTING: 9:00 AM

INSPECTION:
Day Prior from
10:00 AM to 4:00 PM



CINCINNATI INDUSTRIAL AUCTIONEERS

auctioneers | appraisers | since 1961

Contact Information
2020 Dunlap St.
Cincinnati, Ohio 45214
Phone 513-241-9701
Fax 513-241-6760
www.cia-auction.com



(10) Toshiba Molders



(4) Cincinnati Molders



Tank and Tower System



Complete Toolroom

FIRST CLASS MAIL!

PRE-SORT
FIRST CLASS
U.S. POSTAGE
PAID
CINCINNATI, OHIO
PERMIT NO. 3593

Important Mail

TO BE DIRECTED TO THE ATTENTION
OF EXECUTIVE PERSONNEL



WEDNESDAY, OCTOBER 28TH

WEBCAST AUCTION

Plant Closed
PERELES BROS., INC.

5840 North 60th Street
Milwaukee, Wisconsin 53218
Just north of downtown Milwaukee

IMPORTANT NOTICE:

Although information has been obtained from sources deemed reliable, the auctioneer makes no warranty or guarantee, expressed or implied, as to the accuracy of the information herein contained. It is for this reason that buyers should avail themselves of the opportunity to make inspection prior to the sale. This brochure is intended to provide general information of the equipment being offered and is subject to errors, omissions, additions or deletions. Please check with the Auctioneer's Office for a final listing. Items offered may or may not necessarily be sold as described and/or photographed in this brochure.

BIDDER INSTRUCTIONS

> All bidders must register for this auction at www.bidspotter.com. Please register 24-hours in advance to get through approval process.



AUCTIONEERS

Cincinnati Industrial Auctioneers –
WI License No. 172-053

Jeffrey L. Luggen – WI License No. 1148-052

Joseph M. Luggen – WI License No. 2923-52



TERMS OF SALE

All equipment described herein will be sold "as is", "where is" to the highest bidder or bidders for cash in accordance with our regular terms and conditions of sale. Unless other satisfactory arrangements are made, a **25% deposit** in cash, certified or cashier's check payable to Cincinnati Industrial Auctioneers, Inc., **is required on all purchases.** Firm and personal checks accepted only if accompanied by a letter from your bank guaranteeing your funds. All sales are subject to state and/or local taxes unless a signed exemption form is presented at the time of purchase. **All balances are due at the conclusion of the sale.** No merchandise may be removed while the sale is in progress. **All bidders must comply with our Standard Terms of Sale,** copies of which will be available at the sale site or can be obtained from our website.

**18% BUYERS FEE IN EFFECT
FOR ALL PURCHASES**



Sale Under The Management Of

CINCINNATI INDUSTRIAL AUCTIONEERS

auctioneers | appraisers | since 1961 | cia-auction.com | info@cia-auction.com
2020 Dunlap St., Cincinnati, Ohio 45214 Phone 513-241-9701 Fax 513-241-6760