

# WEBCAST AUCTION



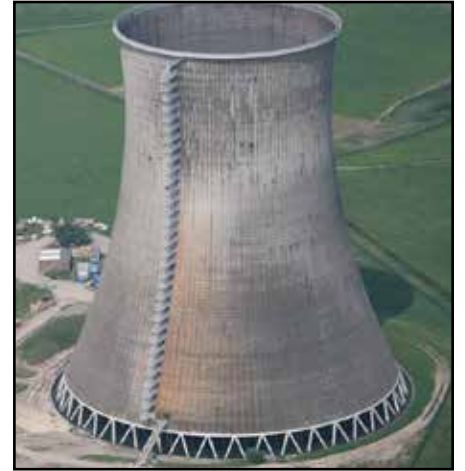
By Order of US Bankruptcy Court  
Former Assets of  
**INTERNATIONAL COOLING  
TOWER ERECTOR**

7335 IN-59 in Brazil, IN 47834

3-DAY WEBCAST AUCTION

**TUES-THURS, AUGUST 15-17, 2023**  
**Starting at 9AM ET**

INSPECTION: Friday 8/11 & Each Day Preceding the Sale



PO Box 369 | Ross, OH 45061  
Phone: (513) 738-3311 | Fax: (513) 738-0221  
MyronBowling.com



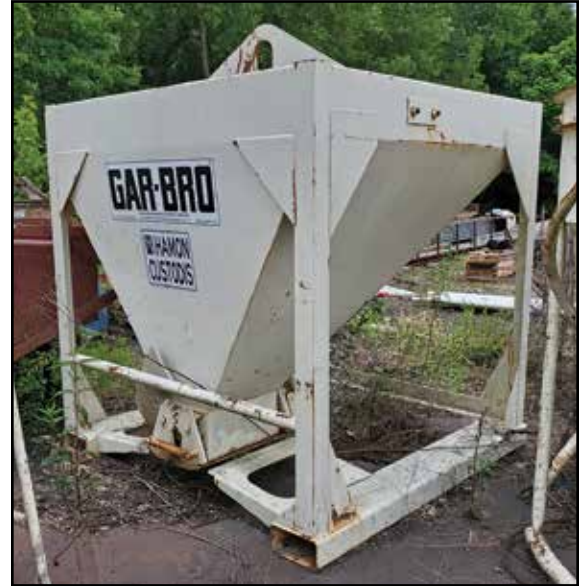


# WINCHES & CRANES





# SCAFFOLDING & CONCRETE FORMS



## SCAFFOLDING

Large Quantity of **Altrex** Aluminum Modular Suspended Scaffolding w/Man Platform & Baskets • Large Quantity of Cuplock & Standard Scaffolding • Silo Steel Slip Form Systems

## CONCRETE FORMS

Large Quantity of Cooling Tower Leg & Lentil Concrete Forms • **Gar-Bro** Concrete Buckets - Laydown Buckets, Side Shoots & Other Types • Assorted Tool/Hardware Crane Buckets • Quantity **Gunnite** Concrete Machines • **Chengrout** Portable Gas Power Mixer



# TELEHANDLERS & FORKLIFTS



# VEHICLES & TRAILERS



## FLATBED TRUCKS

2002 Ford F-450 XL Super Duty Dually Stake Bed Truck • 1999 Ford F-450 XL Super Duty Dually Flat Bed Truck

## PICKUP TRUCKS

2005 Chevrolet 2-Door Long Bed Pickup Truck • 1995 Ford F-Super Duty Pickup Truck • 1994 Ford F-250 XLT Extended Cab Pickup Truck

## ENCLOSED TRAILERS

(4) Wells Cargo Tandem Axle Enclosed Trailer • (7) 48' Tandem Axle

Van Trailers • (3) Detro 27' Enclosed Gooseneck Trailers • 2019 H&H 30' Topline Tri-Axle Gooseneck Enclosed Trailer • (6) Enclosed Tandem Axle Trailers (new as 2014)

## FLATBED TRAILERS

2019 Big Bubba 19' Tandem Axle Gooseneck Flatbed Trailer • Great Dane 45' Tandem Axle Spread Axle Flatbed Trailer • (2) 2013 Diller HDFB40-10230 Tandem Axle Flatbed Trailers • Patriot PF20K 20+5 Tandem Axle Dovetail Trailer



# LIFTING & SAFETY EQUIPMENT



## LIFTING & SAFETY EQUIPMENT

Large Quantity of Heavy Capacity Spreader Bars, Cable Slings, Hooks, Ratchet Chain Hoists, Shackles, Clevises, Nylon Slings & Snatch Blocks up to 20-Ton • Forklift Boom & Attachments • Bottle Lifting Jacks & Enerpac/Assorted Hydraulic Power Packs • Quantity of Hydraulic Power Units • **(8) Tandemlock** Lifting Equipment, 90,000-lb. Capacity • **(200+)** **Skyclimber, Tirak** Electric Hoists for Suspend Scaffolding • Large Quantity of Safety Equipment Including Fall Protection, Harnesses & More • Crane Scales - Chatillon & More • Huge Quantity of Wire Rope & Cable - Non-Slip Crane Cable, Galvanized, Spools & Sections • Cable Reels • Beam Clamps • Assorted Man-Lift Baskets & Cages

## BOOM LIFT & TELEHANDLERS

**2006 JCB** 10,000-lb. Telehandler, All Wheel Steering, Outriggers, 2,896 Hours, Fork Positioner Attachment • **2006 JCB** 10,000-lb. Telehandler, All Wheel Steering, Outriggers, 3,178 Hours • **2005 JCB** 10,000-lb. Telehandler, 41' Reach, 3,301 Hours, Outriggers, 2-Yard Quick-Tach Bucket • **2005 JLG** 500-lb. All-Terrain Knuckle Boom Lift, 60' Platform Height, 39' Horizontal Reach, 2-Man Platform, Diesel Engine • **Terex** 5,500-lb. Telehandler, 19' Reach, 11' Forward Reach, 1,999 Hours, All Wheel Steering, Joystick Control

## CARRY DECK CRANES

**2000 Shuttlelift** 40,000-lb. Carry Deck Crane, 4-Wheel Drive & 4-Wheel Steer, Diesel • **2008 Shuttlelift** 30,000-lb. Carry Deck Crane, LPG • **2007 Broderon** 30,000-lb. Carry Deck Crane, LPG • **1998 Broderon** 18,000-lb. Carry Deck Crane, LPG

## FORKLIFTS

**Caterpillar** 10,000-lb. Forklift, 12,765 Hours • **Caterpillar** 8,000-lb. Forklift, 3,503 Hours • **Caterpillar** 7,600-lb. LP Forklift, **Nissan** Straight 6 Engine, 3,684 Hours, Sideshift • **Champ** 6,000-lb. Yard Forklift, 2-Stage Mast • **Hyster** 5,500-lb. Forklift, 201" Lift Height, Fork Positioner, 3-Stage Mast, 8,391 Hours • **2012 Doosan** 5,000-lb. Forklift, 11,110 Hours • **All-Lift** 5,000-lb. LP Forklift, 188" Lift Height, 9,025 Hours, Sideshift • **Caterpillar** 4,500-lb. LP Forklift, Sideshift, 8,560 Hours, 188" Lift Height, 3-Stage Mast • **Caterpillar** 4,000-lb. Forklift, 7,591 Hours • **Clark** LP Forklift • **Caterpillar** GP25 LP Forklift (Out of Service) • Fork Extensions & Spare Fork Sets

## CRANES

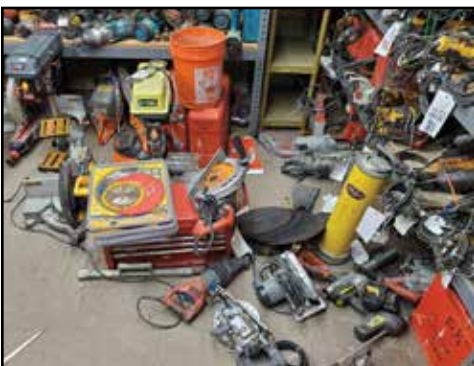
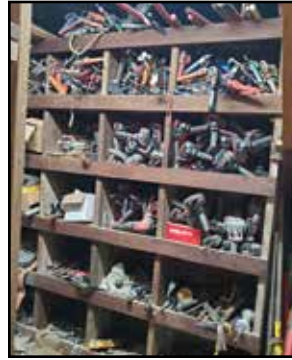
**(4) Clyde Whirlette** Hydraulic Stationary Cranes

## WINCHES

**(23) Timberland** Skid-Mounted Diesel-Hydraulic Winches- Some w/Framed HD Covers • **Timberland** SW-12 Skid-Mounted Diesel-Hydraulic Winch, Cummins V-378C Diesel Engine • **Timberland** SW8-1-192FR Skid-Mounted Diesel-Hydraulic Winch • **(2) Timberland** SW17-1-855FR Skid-Mounted Diesel-Hydraulic Winches • **(5) Timberland** SW14-1-380/383FR Skid-Mounted Diesel-Hydraulic Winches • **(2) Timberland** SW8 Skid-Mounted Diesel-Hydraulic Winch, **Caterpillar** Diesel Engine • PH100-1-150EH Man & Material Hoist • **(3) HPSI** 225-CH-7000 Skid-Mounted Winches • **(30) Ingersoll-Rand** Man-Rider Air Winches, **Thern** Pneumatic Winches, **Big Red** Winches, Power Winches • Wrecking Balls & Ball Hooks • 90 Deg. Pad Cable Sheave Mount Fixtures • **HD** Lay-Down Crane Pads



# TOOLS



## CONTRACTORS TOOLS

**DJI Matrice 300 RTK Drone w/Zenmuse H20T Camera & BS60 Intelligent Battery Charger**  
• **Hilti Model PS1000 X-Scan Concrete Scanner** • **Dynafor 5-Ton Scale** • **Hilti Digital Rebar Finder** • Large Quantity of Survey Equipment Including **Hilti & GE Rotating Lasers & Related**  
• Portable Digital Weight Indicator w/Wheel Weight Function & Platforms • **Generac Backup Power Generator** • Gas Powered Generators • Gas Power Concrete Mixers • Quantity of Job Boxes w/Contents - Rigging, Turnbuckles, Fall Protection & More • Large Quantity of Electric Tools Including **Hilti Core Drills, Hilti Hammer Drills, Hilti Dust Collectors, Mag Base Drills, Milwaukee Equipment, Concrete Chain Saws, Saws, Impact Guns & More**



# MISCELLANEOUS



## MISCELLANEOUS

Electrical Distribution Panels & 3-Phase Extension Cords • (2) 4x4 Utility Vehicles, 4-Person • Digital Platform Scale • **(6+)** Ingersoll Rand Vertical Air Compressors & Portable Air Compressors • **(4)** Diesel Winch Motors • (2) Large Winch Gear Boxes • Vertical Drill Presses • Vertical & Horizontal Band Saws • Chop Saws & Arm Saws • H-Frame Shop Press • Welders & Plasma Cutter Including **(3)** Miller Bobcats, **Miller** XMT 304, **Lincoln** Welders & More • Acetylene Torch Carts • Welder Banks • Torch Carts

## ASSORTED CONSTRUCTION

**Clark** Articulating Front End Loader • **2015 Terex** Towable Light Tower, Model RL4, **Kubota** 1.1L Diesel Engine • **Sullair & Ingersoll-**

**Rand** Towable Air Compressors • **(13)** **40' & 20' Connex** Containers w/Rigging Slings, Cable, Hydraulic & Pneumatic Hose, Hardware, Hand Tools & More

## COOLING TOWER INVENTORY

Large Quantity of Various Size Turnbuckles • Large Quantity of Hardware - Some Stainless Steel • Cooling Tower Fill & Fiberglass Channel & Angle • Large Quantity of **Duey-Dag** Rod Hydraulic Jacks & Rod • Many More Items Than Listed - Fans, Tool Cabinets, Steel Plate, Pillow Blocks, Large Sockets, Safety Cones, Safety Apparel, Lockers, Pallet Racking, Material Baskets, Tubs, Spill Containment, Water Troughs, Signs, Office Equipment & Much More



# 3-DAY WEBCAST - AUGUST 15 - 17



By Order of US Bankruptcy Court

## FORMER ASSETS OF INTERNATIONAL COOLING TOWER ERECTOR

7335 IN-59 in Brazil, IN

3-DAY WEBCAST AUCTION

TUES-THURS, AUGUST 15-17, 2023

Starting at 9AM ET

INSPECTION: Friday 8/11 & Each Day Preceding the Sale



Auction conducted by:

**MYRON BOWLING AUCTIONEERS, INC.**

P. O. Box 369, Ross, Ohio 45061

FIRST CLASS MAIL

PRESORTED  
FIRST CLASS MAIL  
U.S. POSTAGE  
PAID  
CINCINNATI, OH  
PERMIT NO. 5714



## HUGE SCRAP OPPORTUNITY



**ALWAYS AVAILABLE TO HELP  
WITH YOUR AUCTION.**

PRIOR TO THE SALE DATE,  
REGISTER AT  
**BidSpotter.com**

SCAN  
HERE  
TO SEE  
MORE



Joe Oliver  
(513) 604-4958  
Joe@MyronBowling.com



Kevin Gamm  
(513) 235-6430  
Kevin@MyronBowling.com



Greg Hengehold  
(513) 520-7636  
Greg@MyronBowling.com



Christopher Lee  
(513) 720-1687  
Christopher@MyronBowling.com



Tom Bowling  
(513) 738-3311  
Tom@MyronBowling.com

**COMPLETE TERMS & CONDITIONS** can be found at MyronBowling.com, or call (513) 738-3311 if you have questions. Buyer's Premium 18% ONLINE w/BidSpotter.com.

**REMOVAL & PAYMENT:** Machinery removal is the responsibility of the buyer. All equipment must be removed in accordance with the specific auction timeline and terms of sale. See the specific auction web page for details.

Additional terms may be announced during the auction. We make every effort to accurately describe each item in the auction; however, a mistake may occur. Buyers must take responsibility to thoroughly inspect the items on which they intend to bid. Each item will be sold "As is, where is." There is absolutely no warranty or guarantee of any kind either written or implied. Occasionally, additional information may come to light regarding any and all items being sold during the auction. When this occurs the new information takes precedence.

FOR MORE INFORMATION ABOUT EQUIPMENT, CONTACT JOE OLIVER (513) 604-4958, Joe@MyronBowling.com

IN Auctioneer's Lic # AU11900025 • Myron Bowling Auctioneers - AC321000015



PO Box 369 | Ross, OH 45061  
Phone: (513) 738-3311 | Fax: (513) 738-0221  
MyronBowling.com



INDUSTRIAL  
AUCTIONEERS  
ASSOCIATION

