

WEBCAST AUCTION OF LATE MODEL STRUCTURAL FABRICATING MACHINERY,
(2) 2019 PEDDINGHAUS OCEAN AVENGER 1250 BEAM LINES, (2) OCEAN AVENGER
1000 BEAM LINES, PEDDINGHAUS 1250/3D COPER, 33' PACIFIC TANDEM PRESS BRAKE,
SHEARS, ROLLFORMER, AND SUPPORT EQUIPMENT

BidSpotter.com
See Instructions on Page 4
To Become a Qualified Bidder on the Internet

WEBCAST AUCTION

STRUCTURAL FABRICATING MACHINERY BY PEDDINGHAUS AND OCEAN AVENGER

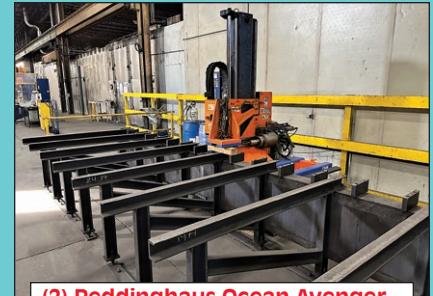
Located at Factories in Franklin & Milwaukee, Wisconsin
Additional Assets Located in Lacrosse, Virginia

SALE DATE: WEDNESDAY, MARCH 15TH STARTING AT 11:00 AM LOCAL

INSPECTION: By appointment only with jeffjr@cia-auction.com



(2) 2019 Peddinghaus Ocean Avenger+ Model MDL-1250/1C
CNC Horizontal Beam Drills



(2) Peddinghaus Ocean Avenger
MDL-1000 CNC Beam Drills



225 Ton x 33' Pacific Model 225-
16.5 Tandem Hydraulic Press Brake



Peddinghaus 1250/3D Beam
Coper



CINCINNATI INDUSTRIAL AUCTIONEERS

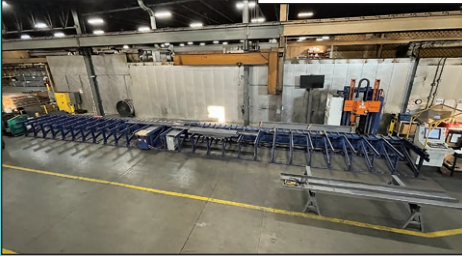
auctioneers | appraisers | since 1961 | cia-auction.com | info@cia-auction.com
2020 Dunlap St., Cincinnati, Ohio 45214 Phone 513-241-9701 Fax 513-241-6760



WEDNESDAY, MARCH 15TH - 11:00 AM LOCAL



(2) 2019 Peddinghaus Ocean Avenger+ Model MDL-1250/1C CNC Horizontal Beam Drills

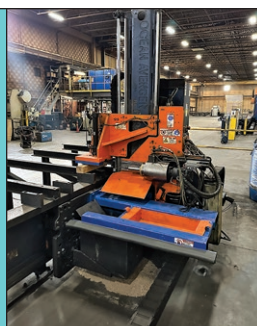


(2) Peddinghaus Ocean Avenger Model MDL-1000/1B CNC Horizontal Beam Drills

BEAM DRILLS IN WISCONSIN

(2) 2019 Peddinghaus Ocean Avenger+ Model MDL-1250/1C CNC Horizontal Beam Drills; s/n B1890, Manufactured 9/2019, 60' Table, Located at Franklin, WI Plant, s/n B1896, Manufactured 12/2019, 40' Table, Located at Milwaukee, WI Plant, Catalog Specs: 48" Max. Profile, 150' Per Minute Max. X-Axis Speed, 60' Per Minute Max. Y-Axis Speed, 25-HP Spindle Motor, 8-Stations ATC, Spindle Speeds to 3,000 RPM, Siemens CNC Control

(2) Peddinghaus Ocean Avenger Model MDL-1000/1B CNC Horizontal Beam Drills; s/n 53754, Manufactured 2006, 40' Table, Control Needs Repair, Located at Franklin, WI Plant, s/n B54042, Manufactured 2010, w/ 40' Table, Was functional until taken out of service about 1 year ago, Located at Milwaukee, WI Plant, 39" Max. Profile, Siemens CNC Control





(2) 2019 Peddinghaus Ocean Avenger+ Model MDL-1250/1C CNC Horizontal Beam Drills



(2) FMB Model Titan Mitre Base Horizontal Band Saws

OTHER MACHINERY LOCATED IN WISCONSIN

33 Ton Amada Pega 357 CNC Turret Punch; s/n AV057006, 58-Station, Tooling, 04PC Control, Machine needs repair
50 Ton Geka Model Puma 50H

Hydraulic Ironworker; s/n 10034
(2) FMB Model Titan Mitre Base Horizontal Band Saws
CML Model TB60 Tube Bender; S/N 6013050

Heavy Duty Fabricated Storage Racks
Fireproof Storage Cabinets



CML Model TB60 Tube Bender



Fireproof Cabinets

VIRGINIA LOCATION

Peddinghaus Model AB-CM1250 CNC Coper; s/n 74844 (2008)
225 Ton x 33' Pacific Tandem Hydraulic Press Brake
Pearson Angle Brace Roll-forming Line
1/4" x 12' Atlantic Model HD50-12 Hydraulic Shear
10' Hydra-Tool Hydraulic Shear; s/n G-822008

Visit www.cia-auction.com for more photos
All equipment will have loading charges



Peddinghaus 1250/3D Beam Coper



Pearson Angle Brace 9-stand Rollforming Line



12' Atlantic Squaring Shear



1/2' Squaring Shear



225 Ton x 33' Pacific Model 225-16.5 Tandem Hydraulic Press Brake

WEBCAST AUCTION

STRUCTURAL FABRICATING MACHINERY BY PEDDINGHAUS AND OCEAN AVENGER

Franklin & Milwaukee, Wisconsin
Additional Assets Located in Lacrosse, VA

SALE DATE:
Wednesday, March 15th
STARTING: 11:00 AM LOCAL

INSPECTION:
By appointment only with
jeffjr@cia-auction.com



CINCINNATI
INDUSTRIAL AUCTIONEERS

auctioneers | appraisers | since 1961

Contact Information
2020 Dunlap St.
Cincinnati, Ohio 45214
Phone 513-241-9701
Fax 513-241-6760
www.cia-auction.com



(4) Peddinghaus Ocean Avenger CNC Horizontal Beam Drills

FIRST CLASS MAIL!

PRE-SORT
FIRST CLASS
U.S. POSTAGE
PAID
CINCINNATI, OHIO
PERMIT NO. 3593

Important Mail

TO BE DIRECTED TO THE ATTENTION
OF EXECUTIVE PERSONNEL



WEDNESDAY, MARCH 15TH

WEBCAST AUCTION

STRUCTURAL FABRICATING MACHINERY BY PEDDINGHAUS AND OCEAN AVENGER

Franklin & Milwaukee, Wisconsin
Additional Assets Located in Lacrosse, VA

IMPORTANT NOTICE:

Although information has been obtained from sources deemed reliable, the auctioneer makes no warranty or guarantee, expressed or implied, as to the accuracy of the information herein contained. It is for this reason that buyers should avail themselves of the opportunity to make inspection prior to the sale. This brochure is intended to provide general information of the equipment being offered and is subject to errors, omissions, additions or deletions. Please check with the Auctioneer's Office for a final listing. Items offered may or may not necessarily be sold as described and/or photographed in this brochure.

BIDDER INSTRUCTIONS

> All bidders must register for this auction at www.bidspotter.com. Please register 24-hours in advance to get through approval process.



AUCTIONEERS

Cincinnati Industrial Auctioneers –
WI License No. 172-053

Jeffrey L. Luggen – WI License No. 1148-052

Joseph M. Luggen – WI License No. 2923-52



TERMS OF SALE

All equipment described herein will be sold "as is", "where is" to the highest bidder or bidders for cash in accordance with our regular terms and conditions of sale. Unless other satisfactory arrangements are made, a **25% deposit** in cash, certified or cashier's check payable to Cincinnati Industrial Auctioneers, Inc., **is required on all purchases.** Firm and personal checks accepted only if accompanied by a letter from your bank guaranteeing your funds. All sales are subject to state and/or local taxes unless a signed exemption form is presented at the time of purchase. **All balances are due at the conclusion of the sale.** No merchandise may be removed while the sale is in progress. **All bidders must comply with our Standard Terms of Sale,** copies of which will be available at the sale site or can be obtained from our website.

18% BUYERS FEE IN EFFECT FOR ALL PURCHASES



CINCINNATI INDUSTRIAL AUCTIONEERS

auctioneers | appraisers | since 1961 | cia-auction.com | info@cia-auction.com
2020 Dunlap St., Cincinnati, Ohio 45214 Phone 513-241-9701 Fax 513-241-6760