

WEBCAST AUCTION OF 750,000 SQ. FT. DISTRIBUTION FACILITY INCLUDING CROWN MATERIAL HANDLING EQUIPMENT, VECOPLAN SHREDDER (2018), BALERS BY HARRIS/SELCO & BALEMASTER, MEZZANINES, POWERED CONVEYOR, SHOP EQUIPMENT AND FACILITY SUPPORT

BidSpotter.com
See Instructions on Page 4
To Become a Qualified Bidder on the Internet

WEBCAST AUCTION

Facility Closed

750,000 SQ. FT. DISTRIBUTION CENTER

258 Prospect Plains Road – Cranbury, New Jersey 08512

20 Miles Northeast Trenton, NJ

SALE DATE: WEDNESDAY, JUNE 22ND, STARTING AT 10:00 AM

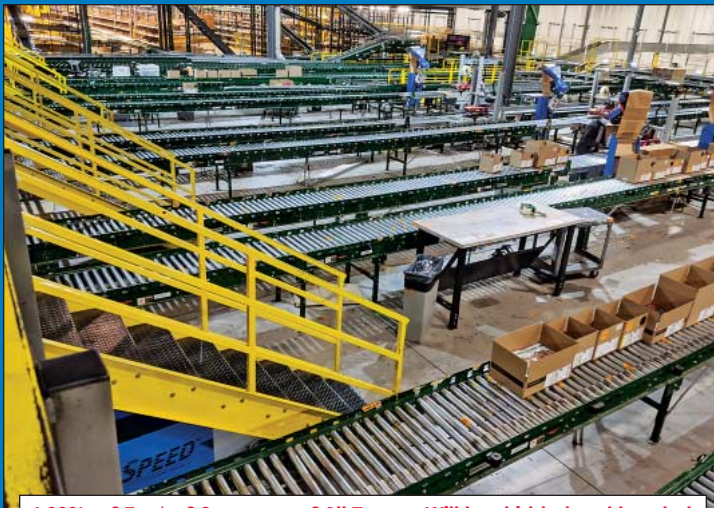
INSPECTION: Day Prior from 10AM to 4PM or by appointment with john@cia-auction.com



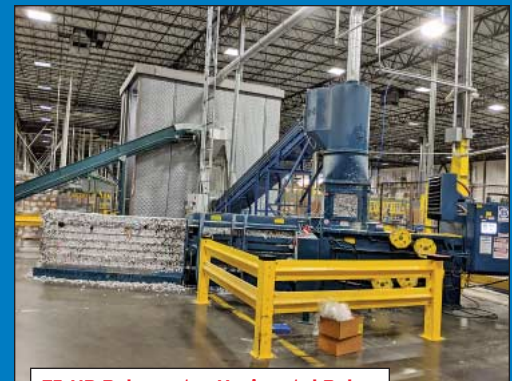
(60) Pcs. Crown Electric Warehouse Equipment



66-KW Vecoplan Type VAZ-1300M Shredder



1,000's of Feet of Conveyor of All Types - Will be skidded and banded



75-HP Balemaster Horizontal Baler



Sale Under The Management Of

CINCINNATI INDUSTRIAL AUCTIONEERS

auctioneers | appraisers | since 1961 | cia-auction.com | info@cia-auction.com

2020 Dunlap St., Cincinnati, Ohio 45214 Phone 513-241-9701 Fax 513-241-6760



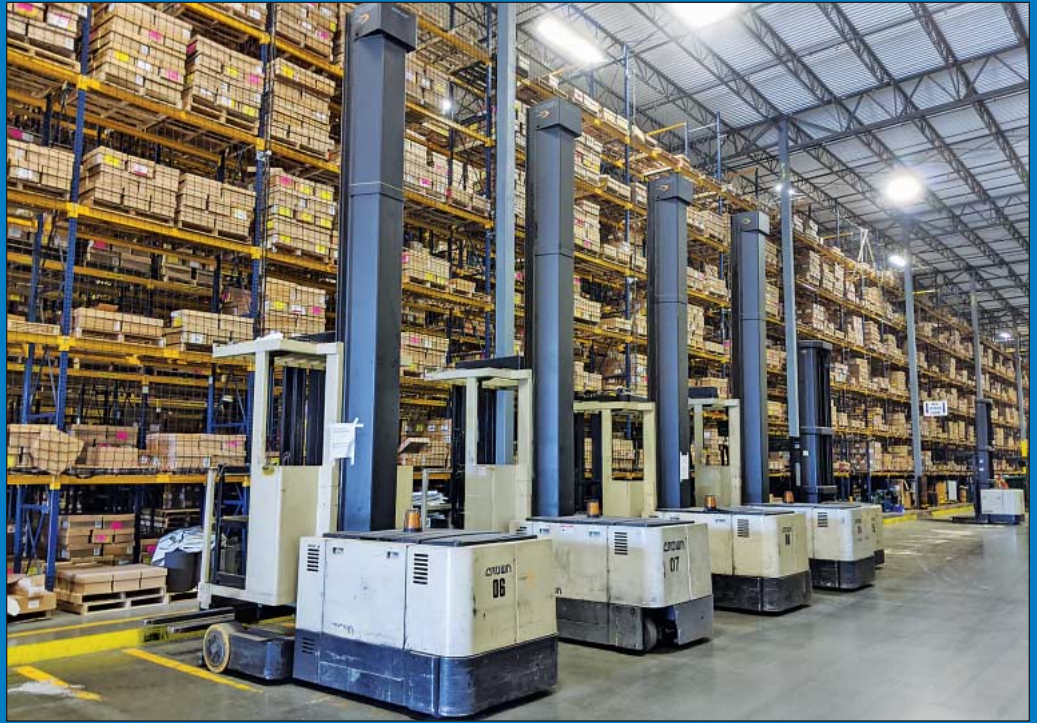
(40) Crown Model SP3040-30 Electric Order Pickers



(7) Crown Electric Reach Trucks



(8) Crown Sit-Down Lift Trucks



(7) Crown Model 30TSPTN Turret Trucks



40-HP Selco Model HLO-508A Hydraulic Baler



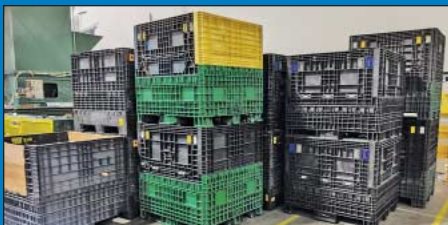
(5) Taylor Dunn Electric Maintenance Carts



Electric Scissor Lifts



Quincy Air Compressors



100's Various Size and Style Plastic Tubs

MATERIAL HANDLING EQUIPMENT

- (40) Crown Model SP3040-30 Electric Order Pickers; 3-Stage Masts, 330" Max Lift.
- (7) Crown Model 30TSPTN Turret Trucks
- (8) Crown Model 50FCTT Electric Sit-Down Type Lift Trucks
- (7) Crown Electric Reach Trucks Models RR3000 RR520045 & RR302035
- (5) Taylor Dunn Electric Maintenance Carts
- Approx. (40) 36V to 72V Spare Lift Truck Batteries

Complete Battery Charging System
 Consisting of; Storage Rack to Hold (70) Batteries, (25) Model 880E3-1255M Multi-Volt Battery Chargers, (2) Battery Handling Sleds w/ Vacuum Handling

VECOPLAN SHREDDER CELL WITH BALEMASTER BALER

- System will be offered individually and overall, highest bid or bids to prevail
- 66-KW Vecoplan Type VAZ-1300M Shredder; s/n 15867-010, Unit Dimensions: 7' x 8' x 16' High, Sound Enclosure
- Ensign Equipment Model 2303 Gaylord Type Dumping Hopper; s/n 13823
- 16" Wide x 24' BE Equipment Cleated Rubber Belt Incline Conveyor; Feeding Shredder
- 24" Wide x 30' Enclosed Incline Conveyor; From Shredder to Baler
- 75-HP Balemaster Horizontal Baler; (5) Tie System, 32" x 40" x 72" Bale Size
- 25-HP Scientific Model SPJ-48-4R78

Dust Collector w/ Piping to Shredder; w/ Fike Pressure Relief Device; s/n 66030

SELCO BALER CELL

- System will be offered individually and overall, highest bid or bids to prevail
- 40-HP Selco Model HLO-508A Hydraulic Baler; s/n 109770118, (5) Tie System, 48" x 42" x 84" Bale Size
- Hercules Model A67450 Gaylord Type Dumper; s/n 1001
- 52" x 12' Excel Cleated Rubber Belt Incline Conveyor
- 36" Wide x 30' Rubber Belt Incline Conveyor (From Excel Conveyor to Selco Baler)
- Philadelphia Model 3400 H.D. Vertical Cardboard Baler; s/n 026806



Overall View Vecoplan Shredder and Balemaster System

750,000 SQ. FT. DISTRIBUTION CENTER



(7) PowerTrax Power Skate Conveyor Trailer Loaders



Dematic Cross Belt Package Sorting System w/ (462) Cross Belts



(7) PowerTrax Power Skate Conveyor Trailer Loaders

PACKAGING EQUIPMENT

Durable packaging Model DGA-3000 Carton Erector; s/n 641390702

Shanklin Heat Sealer and Shrink Tunnel System; Model A27A Heat Sealer; s/n A05170, Model TTH Shrink Tunnel; s/n T05276, (2) Shanklin 18" Belt Conveyors

(3) 3-M Matic Box Sealers

Label-Aire Model 3115NV-1500 4"-12" RHVC Labeler; s/n 03854111710

(4) RanPak Fill-Pak SL Void Filler Machines

Various other Shipping and Packaging Equipment; Box Tapers, Zebra Label Printers, Shipping Conveyors, Turntable Stations, Etc.

MEZZANINE SYSTEMS AND COMPONENTS

These Systems will be Dis-Assembled, Palletized, Banded and Ready for Shipment. Removal may Damage the Plywood Decking.

Components of 50' x 165' x 24' High Two-Story Modular Free-Standing Mezzanine System; (21) 12' x 12' Tube

Uprights, (32) 20" x 25' Support Rafters, 20" Floor Joists at 32" O.C., Safety Railing on Entire Perimeter, (2) Sets of 32" Wide Steps, Corrugates Steel Decking Covered w/ Plywood Decking, (4) Lift Truck Access Points per Deck- **Will be sold as components only**

(2) 25' x 25' x 96" High Modular Free-Standing Mezzanines; 5" x 5" Tube Uprights, 16" I-Beam Rafters w/ 16" Center Rafter, 12" Channel Type Floor Joists @ 48" O.C., Safety Railing, 36" Steps, Corrugated Steel Decking Covered w/ Plywood Decking

CONVEYOR

1,000's of Feet of Conveyor Currently in Production; Motorized Rubber Belt Conveyor of All Sizes & Skate Conveyor, **On Approx. June 1st Conveyor will be Released from Production and Either be Re-Deployed or Dis-Assembled, Stacked & Banded for the Auction**

CROSS BELT SORTING SYSTEM

Dematic Elevated Track Cross Belt Package Sorting System; System has (462) Cross Belt Cells that are Programmed to Distribute Packages off onto Approx. (40) Off-

Load Chutes. System Includes (58) Cell Servo Controllers & (15) Master Cell Controllers. Entire System Controlled by Siemens Master Control Panels

SHOP EQUIPMENT

Large Quantity of Shop Equipment to Support 750,000 Sq. Ft. Facility;

Hydraulic Pallet Trucks, Shop Ladders, Steel Tables, 48" Dia. Rotating Scissor Lift Tables, Rubbermaid Trash Bins, 48" x 48" Collapsible Totes, Air Compressors, Small Welders, Fume Collectors, Large Qty. Hardware Items, Electric Motors, Gear Drives, **100's of Items will be Released on June 1st at Which Time Additional Items May Become Available**

EXERCISE EQUIPMENT
Complete Exercise Facility, Treadmills, Stairs, Bikes, Rowers, Weights and Related

CAFETERIA EQUIPMENT
Complete Cafeteria, Ovens, Stoves, Refrigerators, Walk-In Boxes, Ice Machines and Related



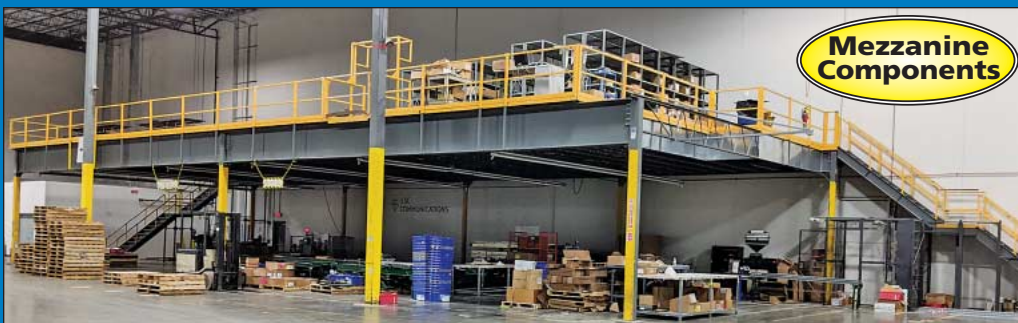
Durable packaging Model DGA-3000 Carton Erector



(4) RanPak Void Fillers



(3) 3-M Matic Box Sealers



(2) 25' x 25' x 96" High Modular Free-Standing Mezzanines - Will be sold read to ship



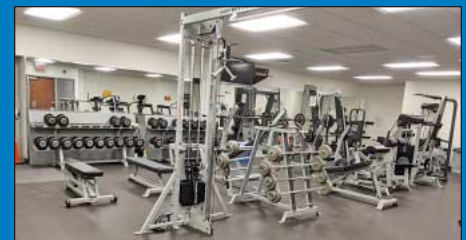
Large Quantity Various Size and Style Conveyor



Pallet Rack Components



Conveyor Parts, Motors, Gear Drives



Complete Exercise Facility

WEBCAST AUCTION

Facility Closed

750,000 SQ. FT. DISTRIBUTION CENTER

Cranbury, New Jersey 08512
20 Miles Northeast Trenton, NJ

**SALE DATE:
Wednesday, June 22nd
STARTING: 10:00 AM**

INSPECTION:
Day Prior from 10:00 AM to 4:00 PM or by
appointment with john@cia-auction.com



CINCINNATI INDUSTRIAL AUCTIONEERS

auctioneers | appraisers | since 1961

Contact Information
2020 Dunlap St.
Cincinnati, Ohio 45214
Phone 513-241-9701
Fax 513-241-6760
www.cia-auction.com



(60+) Forklifts



1000's Feet Conveyor



Shredder and Baler



Warehouse Support

FIRST CLASS MAIL!

PRE-SORT
FIRST CLASS
U.S. POSTAGE
PAID
CINCINNATI, OHIO
PERMIT NO. 3593

Important Mail

TO BE DIRECTED TO THE ATTENTION
OF EXECUTIVE PERSONNEL



WEDNESDAY, JUNE 22ND

WEBCAST AUCTION

Facility Closed

750,000 SQ. FT. DISTRIBUTION CENTER

Cranbury, New Jersey 08512
20 Miles Northeast Trenton, NJ

IMPORTANT NOTICE:

Although information has been obtained from sources deemed reliable, the auctioneer makes no warranty or guarantee, expressed or implied, as to the accuracy of the information herein contained. It is for this reason that buyers should avail themselves of the opportunity to make inspection prior to the sale. This brochure is intended to provide general information of the equipment being offered and is subject to errors, omissions, additions or deletions. Please check with the Auctioneer's Office for a final listing. Items offered may or may not necessarily be sold as described and/or photographed in this brochure.

BIDDER INSTRUCTIONS

> All bidders must register for this auction at www.bidspotter.com. Please register 24-hours in advance to get through approval process.

BidSpotter.com

AUCTIONEERS

Cincinnati Industrial Auctioneers, Inc.

Jeffrey L. Luggen
Joseph M. Luggen



TERMS OF SALE

All equipment described herein will be sold "as is", "where is" to the highest bidder or bidders for cash in accordance with our regular terms and conditions of sale. Unless other satisfactory arrangements are made, a **25% deposit** in cash, certified or cashier's check payable to Cincinnati Industrial Auctioneers, Inc., **is required on all purchases.** Firm and personal checks accepted only if accompanied by a letter from your bank guaranteeing your funds. All sales are subject to state and/or local taxes unless a signed exemption form is presented at the time of purchase. **All balances are due at the conclusion of the sale.** No merchandise may be removed while the sale is in progress. **All bidders must comply with our Standard Terms of Sale,** copies of which will be available at the sale site or can be obtained from our website.

18% BUYERS PREMIUM IN EFFECT FOR ALL PURCHASES



Sale Under The Management Of

CINCINNATI INDUSTRIAL AUCTIONEERS

auctioneers | appraisers | since 1961 | cia-auction.com | info@cia-auction.com
2020 Dunlap St., Cincinnati, Ohio 45214 Phone 513-241-9701 Fax 513-241-6760