

WEBCAST AUCTION

Plant Closed

FORMER ASSETS OF FUEL PUMP AND DISPENSER MANUFACTURER FEATURING SAMSUNG CNC TURNING CENTERS & YAMA SEIKI VERTICAL MACHINING CENTERS, TOOLROOM MACHINERY, 2017 MITUTOYO CMM, TOYOTA LIFT TRUCK, GENIE SCISSOR LIFT, AIR COMPRESSOR & DRYER, BALER, PALLET RACK, SHELVING & MORE



CATLOW, INC.

2750 US-40 – Tipp City, Ohio 45371

13 Miles North of Dayton

SALE DATE:

THURSDAY, MAY 13TH AT 10:00 AM EST

Inspection: Wednesday May 12th from 10 AM to 4 PM

18% BUYERS PREMIUM IN EFFECT FOR ALL PURCHASES

AUCTIONEERS:

Cincinnati Industrial Auctioneers, Inc. –
License No. 63-1983-10439

Joseph M. Luggen – License No. 2010-0000-19
Ryan L. Luggen – License No. 2015-000-109

Jeffrey L. Luggen – License No. 57-1983-33789

BIDDER INSTRUCTIONS

- > **Bidders in the United States** will receive approval forms from our office upon registering for the auction on www.bidspotter.com, pending the Auctioneers review of the information provided you will be approved at the Auctioneers discretion.
- > **Bidders outside of the United States** must post a deposit of approx. 25% of their planned spending budget or \$10,000.00 minimum with Cincinnati industrial auctioneers in order to be approved to bid. Those who do not post the deposit will not be approved. **period.**

See website

www.cia-auction.com

**For Detailed Specifications,
Photos, Link To Online Bidding
And Terms Of Sale.**



CINCINNATI INDUSTRIAL AUCTIONEERS

auctioneers | appraisers | since 1961 | cia-auction.com | info@cia-auction.com
2020 Dunlap St., Cincinnati, Ohio 45214 Phone 513-241-9701 Fax 513-241-6760



NEW
2017



Mitutoyo CRYSTA-Apex S776 CMM with Renishaw Probes

FIRST CLASS MAIL!

PRE-SORT
FIRST CLASS
U.S. POSTAGE
PAID
CINCINNATI, OHIO
PERMIT NO. 3593



Important Mail

TO BE DIRECTED TO THE ATTENTION
OF EXECUTIVE PERSONNEL

WEBCAST AUCTION

Plant Closed

CATLOW, INC.

2750 US-40 – Tipp City, Ohio 45371

13 Miles North of Dayton

SALE DATE:

**THURSDAY, MAY 13TH
AT 10:00 AM EST**

Inspection: Wednesday, May 12th
from 10AM to 4PM

CNC TURNING CENTERS & VERTICAL MACHINING CENTERS

(2) **Samsung SL20/500 CNC Turning Centers**; S/N's 12H440853 & 12G440851, 8" 3-Jaw Chuck, 10-Position ATC, 20" Between Centers, 2.56" Bar Capacity, 4,000 RPM, 25 HP Spindle Motor, Tail Stock, Parts Catcher, Tool Presetter, Kumho Tech PL20 Chip Conveyor, FANUC Series 0i-TD Control (New 2012)

Yama Seiki VMB-1020 CNC Vertical Machining Center; S/N 6017, 44.1" x 23.6" Table, 40.2" X Travel, 23.6" Y Travel, 23.6" Z Travel, 24-Position ATC, CAT 40 Toolholder, 8,000 RPM, 15 HP Spindle Motor, FANUC Series 0i-MC Control, Chip Conveyor (2006)

BAR FEEDER

60" MTA V65LE Tracer Bar Feeder; S/N 16120339, 5mm to 65mm Bar Diameter (New 2012)

TOOLROOM MACHINERY & RELATED

14" x 40" Mazak Mate Engine Lathe; S/N N/A, 10" 3-Jaw Chuck, 1-3" Thru Hole, Tool Post, Tail Stock, 76 to 2,000 RPM

2 HP Bridgeport Series I Mill; S/N 210295 with TRAK DRO, 10" x 42" Servo Power Feed Table

300 AMP Miller Shopmaster 300 AC/DC ARC Welding Power Source; S/N KA738963 with S-21E Wire Feeder

30 AMP Hypertherm Powermax 30 Plasma Cutting System; S/N 30-035563

CMM & INSPECTION

Mitutoyo CRYSTA-Apex S776 Coordinate Measuring Machine; S/N 60251217, 27.55" X-Axis, 27.55" Y-Axis, 23.62" Z-Axis, 27.55" Wide x 31.49" High Max Workpiece, 1,763 LB Max Workpiece Weight, 35.3" x 56.7" Table.

Mitutoyo Master Ball, with Renishaw PH10MQ Plus Motorized Probe Head, Renishaw SP25M Scanning Probe & SM25-3 Scanning Module, (2) Renishaw 3-Station FCR25 Change Racks, Renishaw PHC10-3 Plus and PI200-3 Control Modules, Joystick Box M Control, MiCAT Measurlink 8 Operating Software, Kaeser KMM2-3 Air Dryer and Kaeser KOR35 Filter (New 2017)

14" Deltronic DH214 Optical Comparator; S/N 249113880, 5" x 15" Table with Heidenhain Quadra Check DRO

LIFT TRUCK

5,000 LB Toyota Model 7FGCU25 LP Gas Cushion Tire Lift Truck; S/N 88417, 3-Stage Mast, 189" Lift Height, Side Shift, 48" Forks

SCISSOR LIFT

Genie GS-1530 Electric Scissor Lift; S/N 24168, 15' Max Height, 500 LB Max Weight

AIR COMPRESSOR & DRYER
75 HP Ingersoll-Rand SSR-XF75 Air Compressor; S/N CK0430U98048, 379 CFM, 100 PSIG

Aircel VF-400 Air Dryer; S/N V1C1RL4986, 400 SCFM, 200 Max PSI, 460/3/60 Voltage

BALER

42" x 72" Philadelphia 7200IHD Vertical Hydraulic Baler; S/N 033155

PALLET RACK, SHELVING & FLAMMABLE CABINETS

Large Quantity of Tear Drop Style Adjustable Beam Pallet Rack with Wire Decking; (1) 42" D x 96" W x 120" H; 42" H x 108" W x 120" H; (5) 48" H x 96" W x 96" H; 48" D x 96" W x 120" H, (12) 48" D x 108" W x 96" H; (7) 48" D x 108" W x 120" H; (3) 48" D x 108" W x 144" H, 48" D x 108" W x 168" H

Large Quantity of Shelving & Flammable Cabinets

See website www.cia-auction.com For Detailed Specifications, Photos, Link To Online Bidding And Terms Of Sale.



(1 of 2) Samsung SL25/500 CNC TCS



Yama Seiki VMB-1020 CNC VMC



14" x 40" Mazak Lathe



5,000 Toyota & Genie GS-1530



75 HP IR Air Compressor



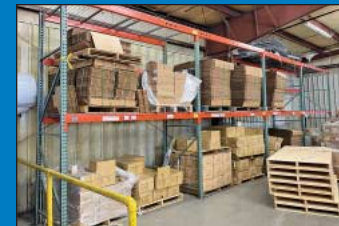
60" MTA V65LE Tracer Bar Feed



2 HP Bridgeport Mill



14" Deltronic DH214 with DRO



Large Quantity of Pallet Rack



Philadelphia Vertical Baler