

TRACTORS, TRUCK, TRAILERS, FIREARMS & EQUIPMENT AUCTION

Sat., March 7, 2020---10:00am

33833 Somerset Rd., Paola, KS

GREG & SUSIE JOHNSON, OWNER

DIRECTIONS: 169 Hwy. to Baptiste Dr. Exit, East on Baptiste Drive to W 311th St. go East on 311th to Somerset Rd. then South on Somerset Rd. approx. 3 1/2 miles.
Or 69 Hwy. to 311th St. Exit, go West on 311th St. to Somerset Rd., South on Somerset Rd. approx. 3 1/2 miles.



TRACTORS

1979 International 1086 w/Cab (no air), 8 Speed Manual, block heater, dual hyd., draw bar, factory 3pt., 500 & 1000 PTO, diesel, WFE, 7360 hrs., tires-front good & back fair

1974 International 1066 w/Cab & Int. 2350 Loader w/bale spike & bucket, turbo, 8 Speed Manual, 500 & 1000 PTO, dual hyd., 5845 hrs., tires-fair

TRUCK

1996 F350 Power Stroke Diesel, 7.3XLT Crew Cab, 8' DewEze 475 Bale Bed w/5th Wheel Hitch & Tool Boxes, Single Wheel Rear Axle, Manual Transmission, 5 Speed, 167,000 mi.

TRAILERS

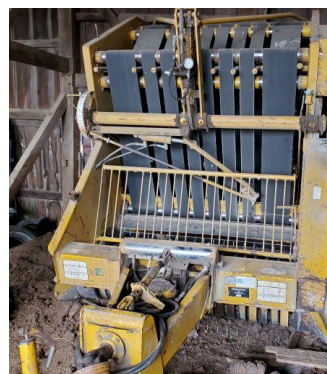
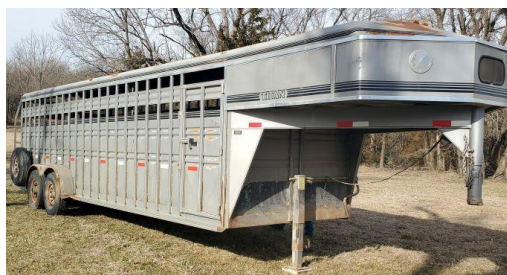
1997 Titan 24' Gooseneck Stock Trailer, 7' wide, Side Door, 2 Dividers, Good Floor, Sliding Rear Door
18' Tandem Axle Flatbed Trailer w/2' Dovetail & Ramps
1976 Hale 16' Gooseneck Stock Trailer, 6' wide, Side Door, 1 Divider, Tandem Axle

HAY EQUIPMENT

New Holland 617 Disc Mower
Vermeer Model 605F 6x5 Baler
24' Electric Hay Elevator
Vicon 3pt. 8 Wheel Hay Rake w/9 new extra teeth
Ford 3pt. 7' Sickle Mower
New Holland String Tie Square Baler (parts only)
King Kutter 3pt. 2,000lb. Bale Stinger
3pt. Bale Stinger

LIVESTOCK EQUIPMENT

2-Priefert Head Gates
15+ 10' & 12' Tube Panels
Electric Fence Wire & Insulators
4 Boxes of Stringer #110 Baler Twine
Red Brand 48" Woven Wire (brand new)
9" 3pt. Post Hole Auger
6-10' Poly Feeders
Several Big Bale Rings
16' Wire Panels
6-Stock Tanks
Rubber Buckets & Calf Bottles
Viking Automatic Waterer for Poultry
Ritchie Pipeline Poultry Electric Heater
Chicken Feeders & Waterers
2-65 Gal. Water Tanks
Misc. Veterinary Supplies
Homemade 3pt. Gooseneck Mover for Tractor



TOOLS

Champion 3500 Running Watts Generator
Lincoln Electric AC/DC Arc Welder
Miter Saw
Polisher
2 Man Gas Powered Post Hole Auger (6" auger)
Router
Oxygen & Acetylene Bottles w/Gauges & Dolly
Misc. Hand Tools

FIREARMS & SPORTS ACCESSORIES

Enders Special Service 12 ga. 18 1/2" Barrell
S&W 1000S Skeet 12 ga., 2 3/4", Vent Rib, Vent Barrel-Ported (never fired)
Sears & Roebuck Model 101 20 ga. Bolt Action w/clip
JC Higgins Sears & Roebuck Model 20 12 ga.
Mosier Erfurt Model 1891
Colt DA 38 Revolver 6 Shot w/5" Barrell
Compound Bow
Legacy Sports Bowie Knife w/Sheath & Box-9" Blade
JD Lock Back Knife-3" Blade
DeKalb Lock Back Knife w/Case-4" Blade
Ammunition
Hodgman Gear Duffel-6 Compartments-30"x12"x12" (never used)
Daisy Powerline Model 1200 Co2 BB Pistol
Plano Protector Series Model 1404 Pistol Case-16"x14"x6" (never used)
Misc. Gun Cases
International Harvester Bag Chair w/Case
Red Bag Chair w/Case
CB Radios
Sport Dog Trainer Set
Misc. Antlers
Tree Stand
Clay Pigeon Thrower
Dozen Duck Decoys



MISCELLANEOUS

Yard Hydrant
Pfizer Genetics Wall Clock
John Deere Throw Blanket
Bridles
Sears Sauna Heater
Duluth Truck Seat Tool Bag
"Indian Summer" Trophy Buck & Friend Out For An Afternoon Stroll Picture by Terry Redlin
"The Sharing Season" First Annual Sharing Series Edition Picture by Terry Redlin
Ice Tongs
Tonka Trucks
Viking Pop Up Trailer
Camper Shell



23496 County Rd. 1077, Parker, KS 66072

Dennis Wendt, Auctioneer
913-285-0076
Bill McNatt, Auctioneer
913-849-3519
Danny West, Auctioneer
913-731-7687

View online @
www.wendtauction.com

Office: (913) 898-3337
Toll Free: 800-416-2993
Email: dennis@wendtauction.com

TERMS OF AUCTION: Cash, check or credit card w/proper ID. Statements made day of auction take precedence over written materials. All items sell "as-is", where-is & without warranty expressed or implied. Owners or auction company not responsible for accidents, theft or loss of sale items.