

Buy Well, Sell Well with Tugwell



www.TugwellAuctionRealty.com

P.O. Box 252 • Falkland, NC 27827

NCAL #7533 • NCRB #44867 • VAAL #3236 • VAAL #3239
RETURN SERVICE REQUESTED



PRESORTED
FIRST-CLASS
U.S. POSTAGE PAID
ROCKY MOUNT, NC
PERMIT NO. 39

FRIDAY, FEBRUARY 21, 2020 – 10:00 AM

WINSLOW TEW – 4210 NORTH NC 903 HWY., ALBERTSON, NC – DUPLIN COUNTY

Directions: From Kinston, NC at the intersection of Highways 70 / 258 & 11, take Hwy. 11 south for 3.5 miles. Turn right on Hwy. 55 west for 11 miles. Turn left on Hwy. 903 south for five miles. Sale on the left. From Mount Olive, NC take Hwy. 55 east for 15 miles. Turn right on Hwy. 903 south for two miles. Sale is Two miles north of Albertson, NC on Highway 903.

Winslow Tew is discontinuing his Tobacco Operation and selling his well-maintained and very clean Tobacco Equipment. He has neighbors who are consigning Tobacco Equipment to his sale.

Winslow Tew Tobacco Equipment

Granville Green Tobacco Unloading System, all electric single phase, 16 ft. mobile transition conveyor and two smaller conveyors, box rail and scales.
Johnnie Sheppard Dry Tobacco Conveyor Bailing System, conveyor with hopper, tumbler, picking table
Mercer Tobacco Baler with scales
Shop Made Tobacco Baler with scales
Hydraulic Power Unit
Powell Generation IV 6342 – 2 row three wheel Automatic Tobacco Primer, John Deere diesel engine, Johnnie Sheppard dump box, defoliator heads and tipping heads just rebuilt (2943 hours)
Powell Generation IV 6342 – 2 row three wheel Automatic Tobacco Primer, John Deere diesel engine, Johnnie Sheppard dump box, defoliator heads and tipping heads just rebuilt (4140 hours)
Johnnie Sheppard 4 row Tobacco Delugger (46 inch)
Powell 4 row topper
KMC 4 row rolling Cultivator with 2 KMC sowers, 2 Johnnie Sheppard 55 gallon nitrogen fertilizer tanks and sprayer attachments, 3 pt.

KMC 4 row ripper bedder (4-inch x 7-inch toolbar) 3 pt.
One set of 3 bale squeeze forks
Mitsubishi 8,000-pound Forklift, 4-cylinder propane gas engine, 3 stage mast
Caterpillar 8,000-pound Forklift, 4-cylinder propane gas engine, 3 stage mast, side shift
John Deere 6500 Hi Cycle three-wheel sprayer, cab, diesel, hydrostatic, 60 ft. booms (4827 hours) Serial # N06500X002168
John Deere 6000 Hy Cycle three-wheel sprayer, cab, diesel, 4 speed, 4 row sprayer booms, (3121 hours) Serial # N06000X013254
John Deere 6000 Hy Cycle three-wheel sprayer, cab, diesel, 4 speed, 4 row sprayer booms, (3592 hours) Serial # N06000X013325
1991 Chevrolet School Bus Tobacco Hauler, diesel, AT, air brakes, 24 ft. Johnnie Sheppard drag bottom
1990 Chevrolet School Bus Tobacco Hauler, diesel, AT, air brakes, 24 ft. Johnnie Sheppard drag bottom
1988 Chevrolet School Bus Tobacco Hauler, diesel, AT, air brakes, 24 ft. Johnnie Sheppard drag bottom
1988 Chevrolet School Bus Tobacco Hauler, diesel, AT, air brakes, 24 ft. Johnnie Sheppard drag bottom

TOBACCO EQUIPMENT AUCTION

FRIDAY, FEBRUARY 21, 2020 – 10:00 AM

WINSLOW TEW – 4210 NORTH NC 903 HWY., ALBERTSON, NC – DUPLIN COUNTY

www.TugwellAuctionRealty.com

Personal Property Terms: Everything sells “as is” with no guarantees or warranties either expressed or implied. **No Buyers’ Premium is Charged!** Cash, Check or Credit Card in full day of sale. A 3.5% Surcharge will be added to all Credit Card Invoices. Information obtained was furnished by sources deemed reliable; however, neither the owners nor the auction company guarantees this information to be correct. We encourage buyers to inspect the property/items prior to sale and bid accordingly.

****** NO BUYERS’ Premium is charged. ******

For more information call TUGWELL AUCTION & REALTY COMPANY at 252-752-8220, 252-531-1500, 252-902-6895, 252-531-5312

AUCTIONEERS:

John Tugwell
Carl Miller
LF Worthington
Kenneth Allen
Sharyn Tugwell
Joby Tugwell
Michael Landen
Clerk: Mike Wooten
Clerk: Bonnie Allen
Clerk: Willie Allen

UPCOMING AUCTIONS:

Saturday, February 29, 2020
Farm Equipment Auction - Snow Hill, NC – Greene County

FRIDAY, March 6, 2020
LAND AUCTION – 315+/- ACRES with 133+/- Acres Cleared in 3 tracts, Southern Pitt County, Craven County, Beaufort County

Saturday, March 7, 2020
38th Annual Belvoir Fire Department Auction
Firearms to be sold at 9:00 AM - Greenville, NC – Pitt County

Saturday, April 18, 2020
Antiques – Antiques – Antique Auction - Greenville, NC – Pitt County

Saturday, May 9, 2020
Large 5 Bedroom, 3 Bath Brick Home on 2+ Acres
Personal PropertyWalstonburg, NC – Greene County



For more information call TUGWELL AUCTION & REALTY COMPANY at 252-752-8220, 252-531-1500, 252-902-6895, or 252-531-5312

FRIDAY, FEBRUARY 21, 2020 – 10:00 AM
WINSLOW TEW – 4210 NORTH NC 903 HWY., ALBERTSON, NC – DUPLIN COUNTY

Greg Rouse Tobacco Equipment

**Bulk Barns, Johnnie Sheppard Unloading System and Johnnie Dry Tobacco Baling System to be sold at physical address:
 5706 Liddell Rd. Seven Springs, NC**

(7) DeCloet All Metal Tobacco Bulk Barns, (2) 14 Box Bulk Barns with Wayne heat exchanges, Cureco automatic heat controls, (5) 13 Box Bulk Barns with DeCloet heat exchanges and Cureco automatic heat controls
 Johnnie Sheppard Green Tobacco Unloading System, 16 ft. conveyor, scales, Johnnie Sheppard hydraulic power unit with 10 HP motor
 Johnnie Sheppard Dry Tobacco Conveyor Baling System, 2 conveyors, tumbler, Johnnie Sheppard power unit

All Other Equipment will be sold at 4210 North NC 903 Hwy., Albertson, NC

Mercer Tobacco Baler with scales, 3 pt.	1988 Chevrolet School Bus Tobacco Hauler, diesel, AT, air brakes, Johnnie Sheppard 24 ft. live bottom
Shop made Tobacco Baler with scales, (fork lift)	B&O 4 row Tobacco Harvester with Johnnie Sheppard conveyor, pull type
Johnnie Sheppard Power Unit and Shop made Power Unit	Mobile 5 ft. x 30 ft. heavy duty metal ramp
Dual axle three-wheel Sprayer Trailer with ramps	Johnnie Sheppard 250-gallon saddle tanks and mounts
Dual axle Tobacco Tray Trailer (240 Trays)	Bush Hog 4 row rolling cultivator, 3 pt.
1995 International School Bus Tobacco Hauler, diesel, AT, air brakes, Johnnie Sheppard 24 ft. live bottom	Pallet of DeCloet Primer Parts



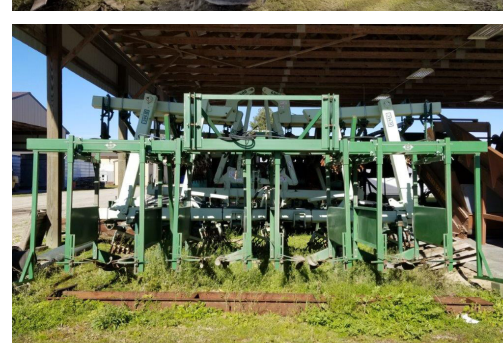
Jack Alphin Tobacco Equipment

**Bulk Barns & Tobacco Primers will be sold at Physical Address:
 519 Bethel Church Rd. Mt. Olive, NC**

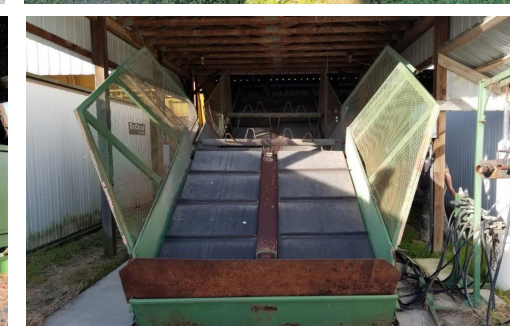
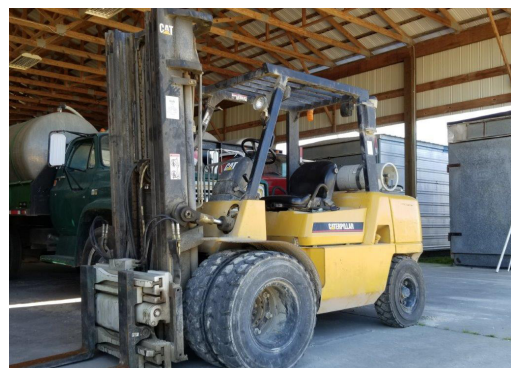
(6) Tharrington All Metal 8 Box Tobacco Bulk Barns (wood floors), all barns have Bulk Tobac burners and heat exchanges, Cureco automatic heat controls
 Powell Generation IV 6342 – 2 row three wheel automatic Tobacco Primer, John Deere diesel, Johnnie Sheppard dump box
 Powell Generation IV 6342 – 2 row three wheel automatic Tobacco Primer, John Deere diesel, Johnnie Sheppard dump box

All Other Equipment will be sold at 4210 North NC 903 Hwy., Albertson, NC

Lannen 4 row carousel Tobacco Setter, (2) Holland fertilizer sowers, (2) plant holder racks, 3 pt.	Granville 2 row Automatic Tobacco Stripper with dump box, Deutz diesel engine, (1057 hours) Serial # HARV-0002-09
Lilliston 4 row rolling Cultivator (5 spider), 3 pt.	Granville 15 ft. x 9 ft. Green Tobacco Carrier, 3 pt.
(2) Plant Tobacco Tray Trailers (135, 155 trays)	
Johnnie Sheppard Poultry House Washer	



Consignments Accepted – Call the Auction Company at 252-531-1500



**For more information call
 TUGWELL AUCTION
 & REALTY COMPANY
 at 252-752-8220,
 252-531-1500,
 252-902-6895,
 or 252-531-5312**

www.TugwellAuctionRealty.com