

Buy Well, Sell Well with Tugwell



www.TugwellAuctionRealty.com

P.O. Box 252 • Falkland, NC 27827

NCAL #7533 – NCRB #23998  
RETURN SERVICE REQUESTED

PRESORTED  
FIRST-CLASS  
U.S. POSTAGE PAID  
ROCKY MOUNT, NC  
PERMIT NO. 39

## MECHANIC SHOP EQUIPMENT AND MISCELLANEOUS WOODWORKING TOOL AUCTION SATURDAY, FEBRUARY 5, 2022 – 9:30 AM ALTON WEBB - 2342 NC 111 SOUTH, PINETOPS, NC – EDGECOMBE COUNTY

# www.TugwellAuctionRealty.com

**Personal Property Terms:** Everything sells “as is” with no guarantees or warranties either expressed or implied. Cash, Check or Credit Card in full day of sale. A 3.5% Surcharge will be added to all Credit Card Invoices. Information obtained was furnished by sources deemed reliable; however, neither the owners nor the auction company guarantees this information to be correct. We encourage buyers to inspect the property/items prior to sale and bid accordingly.

ALL Buyers who are exempt from paying NC Sales Tax must present an E595E North Carolina Department of Revenue Form for Qualified Farmers, signed by buyer with your NC Sales Tax Exemption Number & Information. If you are from out of state and do not have a North Carolina Qualified Farmers’ Exemption number, please call the NC Department of Revenue at 877-252-3052 to apply for this tax exemption.

**\*\*\*\* NO BUYERS’ Premium is charged. \*\*\*\***

For more information call  
**Tugwell Auction & Realty - 252-531-1500**

### UPCOMING AUCTIONS

**Tobacco & Farm Equipment Auction**

**FRIDAY, February 18, 2022 – Robersonville, NC – Martin County**

**39th Annual Belvoir Fire Department Auction**

**Saturday, March 5, 2022 – 9:00 AM – Greenville, NC – Pitt County**

**AUCTIONEERS:**  
John Tugwell  
Carl Miller  
LF Worthington  
Kenneth Allen  
Sharyn Tugwell  
Joby Tugwell  
Michael Landen  
Clerk: Mike Wooten  
Clerk: Rachel Whitehurst  
Clerk: Bonnie Allen  
Clerk: Willie Allen

## MECHANIC SHOP EQUIPMENT AND MISCELLANEOUS WOODWORKING TOOL AUCTION SATURDAY, FEBRUARY 5, 2022 – 9:30 AM - ALTON WEBB - 2342 NC 111 SOUTH, PINETOPS, NC – EDGECOMBE COUNTY

**Directions:** From Pinetops, NC at the intersection of Hwy. 42 & 43, take Hwy 42 west for two miles. Turn right at Triangle Service Station on Hwy. 111 south for ¾ mile. Sale on the left.

**Alton Webb “Grease Monkey” has been in the mechanic business for over 50 years. Alton is now retiring and we are selling his shop equipment and tools. Many items and tools. Come early, stay late!!!! ~ John Tugwell**

### Partial Listing

1985 Ford F350 Truck with 6.9 diesel engine, 4 speed transmission and a 480 Holmes double winch wrecker  
1998 Ford Ranger XLT Pickup Truck, 4-cylinder gas, AT, AC, 214,446 miles  
6 ft. x 8 ft. single axle trailer  
Miller Welder with Onan motor on trailer  
Mohawk 6-ton Auto Lift  
John Deere 330 riding lawn mower, diesel, 48 inch cutting deck, 4 ft. blade on front, 4 ft. drag blade behind  
Shop 120-gallon air compressor with 5 HP motor  
(2) Smaller air compressors  
(5) Air tanks  
Hofmann Monty 1610 tire changer  
Hofmann Geodyna 40-wheel balancer  
Bishman computer wheel balancer  
Ammco brake lathe  
Smith Power Pro ½ inch plasma cutter  
Miller Matic 35 wire welder  
Heavy duty Townsend drill press, 3 phase, self-feeding  
Metal shaping tool  
Hydraulic pump system with hydraulic press  
Kalamazoo metal saw  
White Industries AC recovery kit  
AC hose maker  
Hyper Tough 1600 PSI pressure washer (NEW)  
Craftsman diagnostic tester  
Craftsman timing light  
Annie voltage tester  
Drill Doctor 400 drill sharpener  
Turbo Z waste oil heater (needs burner)  
Hein-Warner transmission jack  
Bumper air jack  
Large assortment of wrenches and tools  
Pipe wrenches  
Adjustable wrenches  
Several lug wrenches  
Several hydraulic jacks  
(5) Bottle jacks, 2 ton - 20 ton  
Camper trailer hitch  
Pintle trailer hitch  
(5) roller stands  
(3) aluminum extension ladders  
120 drawer bolt bin  
6 drawer tool storage rack  
(10) fire extinguishers  
4 post steel stand  
(3) hydraulic cylinders  
Gas grill burners  
(5) 20 lb. gas cylinders  
(2) electric motors  
Numerous hand tools  
8 ft. metal frame table with plywood top and two shelves  
Hose clamps and rack

Numerous extension cords  
Numerous air hoses  
Many hammers  
35 ft. x 38-inch metal work table  
63-inch x 27-inch metal table  
5 rack rolling table  
Wood top work table on rollers  
5 brick gas heaters  
(3) 8 ft. folding tables  
Filing drawers  
DeWalt hand grinder  
Miller Sawzall  
DeWalt Sawzall  
Acetylene torch, cart and tanks  
(6) oxygen tanks  
(3) Acetylene tanks  
Argon tank  
Several gas cans  
(2) Craftsman tool boxes  
Kobalt blower  
Boules tire repair kit  
Shop vac  
Assortment of 3/8 inch – ½ inch fan belts  
(70) antique bottle type fuel pumps  
Bench grinder  
Vice  
Wood and metal hole saw kit  
(4) snatch blocks  
Several chains, various lengths  
Several chain binders  
Creeper  
Emergency road kit  
(2) Hand carts  
(3) 7 ft. x 36-inch 9 shelf metal racks  
5 ft. x 29-inch rolling metal table with wood dividers  
(5) roll around work tables  
(2) floor jacks (need repair)  
(4) electric fans  
6-inch wood joiner  
Craftsman 6-inch wood joiner  
30-inch Craftsman wood lathe with drawer  
Router table  
13-inch stationary planer  
DeWalt 12-inch compound miter sliding saw on metal frame  
Craftsman 10-inch radial arm saw  
Wood working table and tools – router, chop saw, sander, planer, scroll saw with rack  
Sanding table with electric motor with 50-inch x 14-inch belt  
(20) wood clamps  
Electric drill  
Jigsaw  
Ridgid sander

Craftsman sander  
Porter cable router planer

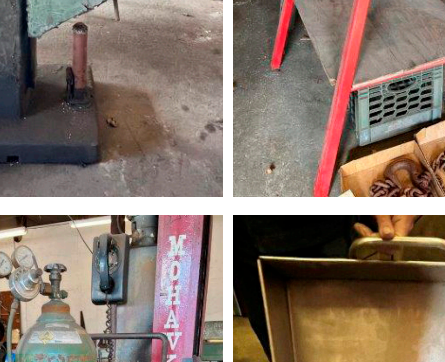
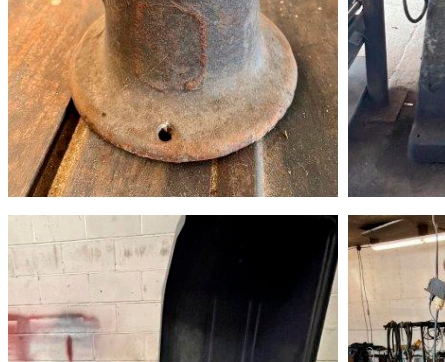
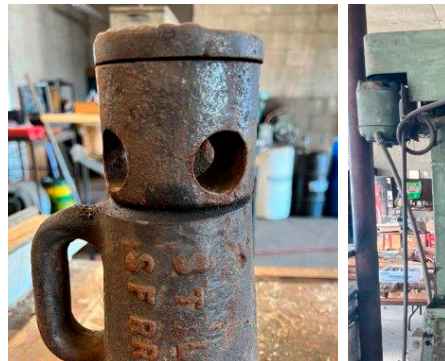
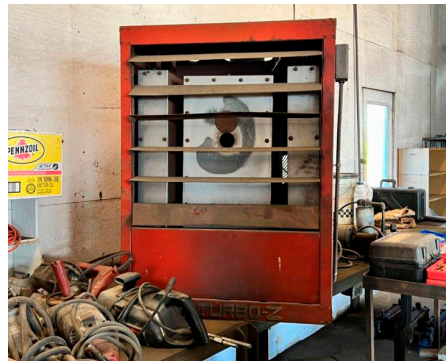
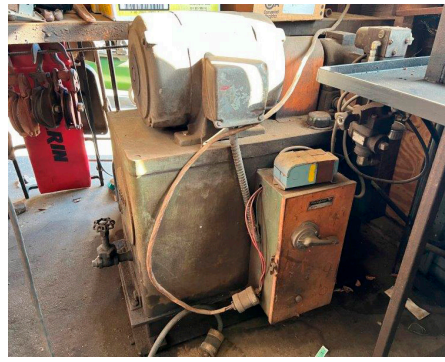
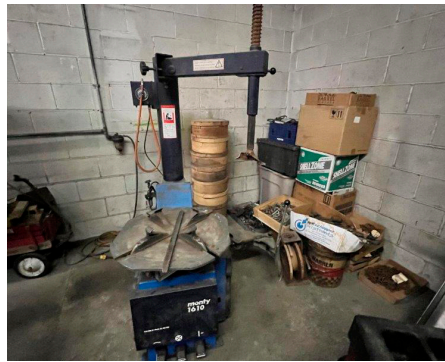
### Miscellaneous Items

Sullivan Hi-Tork model plane engine starter  
Model plane  
Metal swing frame  
Wood swing frame  
8 ft. picnic table  
(5) metal trash cans  
(2) plastic trash cans  
20-inch x 37-inch pig picking pan  
5 large cooking pots  
Gas deep fat fryer  
Army field stove  
Army ammo box  
Antique Pepsi crates  
Antique insulators  
Pinball machine  
(2) Antique rotary dial telephones  
Antique Santa Fe railroad jack  
Handmade wood model tobacco barn  
(4) Antique wood boxes  
(22) New knives in boxes  
Nemco hotdog cooker (never used)  
Minolta Maxxum 7000 35 mm camera with 70-120 AF zoom lens & Maxxum 4000 AF flash  
Several drink coolers  
Several plastic containers  
(3) Model 3300 air survival packs  
Antique Road Master child’s wagon with assortment of metal Tonka toys  
Electric horse shears  
50-inch wood bench  
30-inch wood bench  
Several wooden chairs  
(2) Microtek computer monitors  
10 ft. x 10 ft. tent pipe frame  
500 x 15 new front tractor tire  
200 cement blocks  
New bathroom sink  
Traditional wooden floor easel  
Craftsman laser with tripod and survey tools  
Set of left-handed golf clubs  
2015-2019 Chevrolet 3500 LTZ dually body w/ tailgate, bumper, and Reese hitch, (minor damage)  
\*30 model toy tractors and farm implements, some in original boxes

**Many other items  
Selective Consignments Accepted – call  
252-531-5312 or 252-902-6895**

# www.TugwellAuctionRealty.com

**MECHANIC SHOP EQUIPMENT AND MISCELLANEOUS WOODWORKING TOOL AUCTION**  
**SATURDAY, FEBRUARY 5, 2022 – 9:30 AM - ALTON WEBB - 2342 NC 111 SOUTH, PINETOPS, NC – EDGECOMBE COUNTY**



For more information call  
**TUGWELL AUCTION & REALTY COMPANY**  
at 252-531-1500,  
252-902-6895, or 252-531-5312

[www.TugwellAuctionRealty.com](http://www.TugwellAuctionRealty.com)

