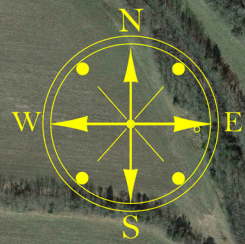
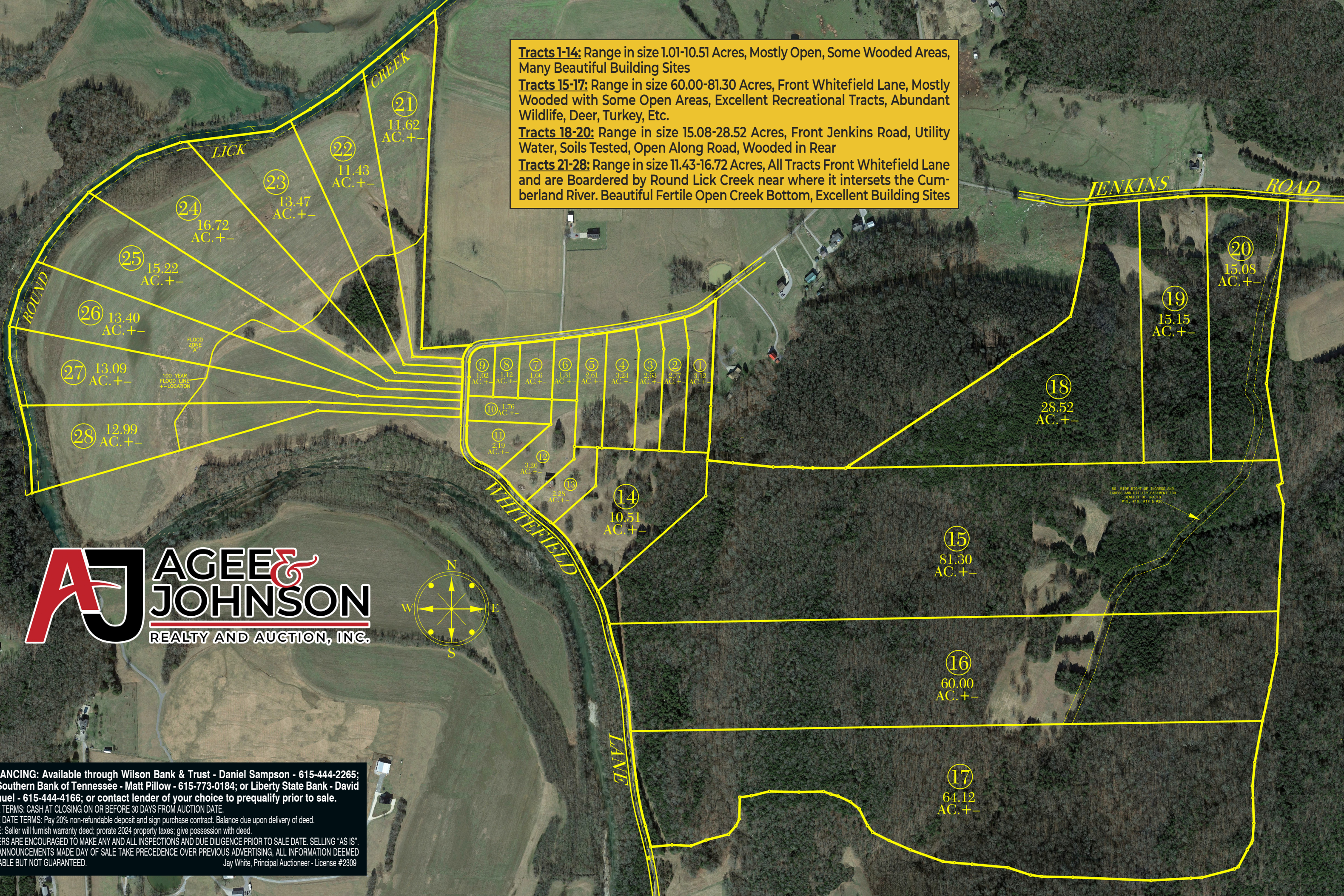


Tracts 1-14: Range in size 1.01-10.51 Acres, Mostly Open, Some Wooded Areas, Many Beautiful Building Sites
Tracts 15-17: Range in size 60.00-81.30 Acres, Front Whitefield Lane, Mostly Wooded with Some Open Areas, Excellent Recreational Tracts, Abundant Wildlife, Deer, Turkey, Etc.
Tracts 18-20: Range in size 15.08-28.52 Acres, Front Jenkins Road, Utility Water, Soils Tested, Open Along Road, Wooded in Rear
Tracts 21-28: Range in size 11.43-16.72 Acres, All Tracts Front Whitefield Lane and are Boardered by Round Lick Creek near where it intersets the Cumberland River. Beautiful Fertile Open Creek Bottom, Excellent Building Sites



FINANCING: Available through Wilson Bank & Trust - Daniel Sampson - 615-444-2265; or Southern Bank of Tennessee - Matt Pillow - 615-773-0184; or Liberty State Bank - David Penuel - 615-444-4166; or contact lender of your choice to prequalify prior to sale.
SALE TERMS: CASH AT CLOSING ON OR BEFORE 30 DAYS FROM AUCTION DATE.
SALE DATE TERMS: Pay 20% non-refundable deposit and sign purchase contract. Balance due upon delivery of deed.
TITLE: Seller will furnish warranty deed; prorate 2024 property taxes; give possession with deed.
 BUYERS ARE ENCOURAGED TO MAKE ANY AND ALL INSPECTIONS AND DUE DILIGENCE PRIOR TO SALE DATE. SELLING "AS IS".
 ALL ANNOUNCEMENTS MADE DAY OF SALE TAKE PRECEDENCE OVER PREVIOUS ADVERTISING. ALL INFORMATION DEEMED RELIABLE BUT NOT GUARANTEED.
 Jay White, Principal Auctioneer - License #2309