

# AUCTIONS

## Government Owned Properties

JUNE 1<sup>ST</sup>



Max Spann Real Estate & Auction Co.  
P. O. Box 4992  
Clinton, New Jersey 08809  
A licensed NJ Real Estate Broker

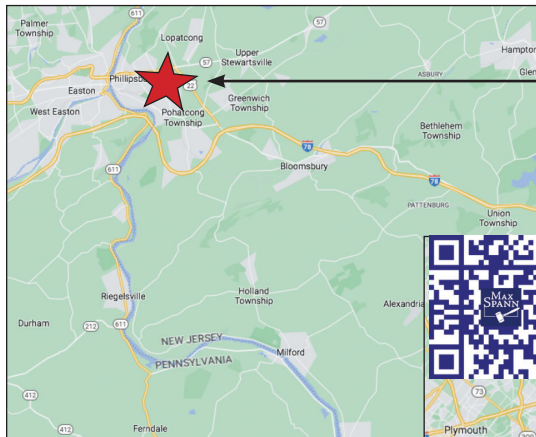


OFFICES: NEW YORK - NEW JERSEY - FLORIDA

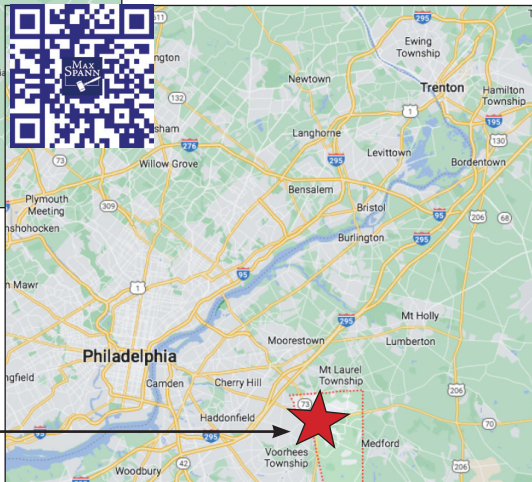
888-299-1438 | [maxspann.com](http://maxspann.com)

**Bid On-Line!**

Get the Max Spann Smartphone App or go on-line



Main Street Retail Commercial  
Redevelopment Site, Residential  
Homes, and Lots  
Throughout the Town  
Phillipsburg, Warren County, NJ



13 Residential Opportunities  
throughout the Township  
Evesham Twp,  
Burlington County, NJ



# AUCTIONS

## Government Owned Real Estate Sale

By Order of the Town of Phillipsburg



Main Street Retail Commercial Redevelopment Site,  
Residential Homes, and Lots Throughout the Town

Phillipsburg, Warren County, NJ

By Order of the Township of Evesham



13 Residential Opportunities  
throughout the Township

Evesham Twp, Burlington County, NJ

JUNE 1<sup>ST</sup>



By Order of the Town of Phillipsburg



## MAIN STREET RETAIL COMMERCIAL REDEVELOPMENT SITE, RESIDENTIAL HOMES, AND LOTS THROUGHOUT THE TOWN OF PHILLIPSBURG

- Main Street Commercial Retail Redevelopment Site.
- Thirteen Residential Parcels.
- Fantastic Opportunity for Neighboring Property Owners, Investors, and Local Builders – Don't Miss This Auction!
- Phillipsburg-Located on the Delaware River is a close-knit community of families and friends with a quaint downtown waterfront shopping district.



.68<sup>±</sup> Acres in the Riverfront Redevelopment UEZ  
191 Howard Street



Commercial Lot - Great Visibility on Broad Street



One of Two Residential Homes  
Bid on your Favorite!



11 Residential Lots  
Buy One or Several



Main Street Redevelopment Site on Signalized Intersection  
Numerous Possibilities



.28<sup>±</sup> Acres Residential Lot  
688 Belvidere Road

### Online Auction:

Concludes Thursday, June 1, 2023 at 11 am

Join the maxspann.com bidders club, download the property information package, then drive-by and preview the properties when convenient.

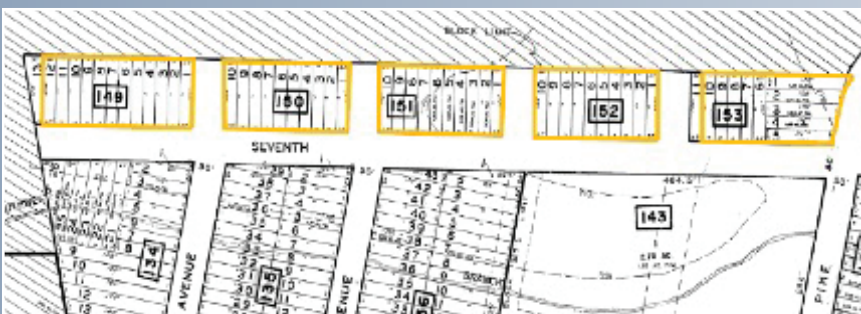
By Order of the City of Evesham



## RESIDENTIAL OPPORTUNITIES THROUGHOUT THE TOWNSHIP

100+ LOTS ASSEMBLED INTO 13 PACKAGES

*Evesham is a wonderful township loaded with parks, lakes and farms and ideally located between Philadelphia and the New Jersey Shore.*



Package #13: 2.4<sup>±</sup> Acre Assemblage



Two Contiguous Lots on Fern Drive across the lake from the Beach Club



Package #5: 1.99<sup>±</sup> Acres on Hopewell Rd



Package #9: 5.88<sup>±</sup> Acres, 130 Navy Lane

### Online Auction:

Concludes Thursday, June 1, 2023 at 1 pm

Join the maxspann.com bidders club, download the property information package, then drive-by and preview the properties when convenient.

Call or visit our site for the list of properties

888-299-1438  
MAXSPANN.COM  
SERVING THE NATION

