

DONNA J. CLOCK ESTATE REAL ESTATE AUCTION

115A M/L GRANT COUNTY & DELAWARE COUNTY, IN

TUE., DECEMBER 14 - 6:00 P.M.

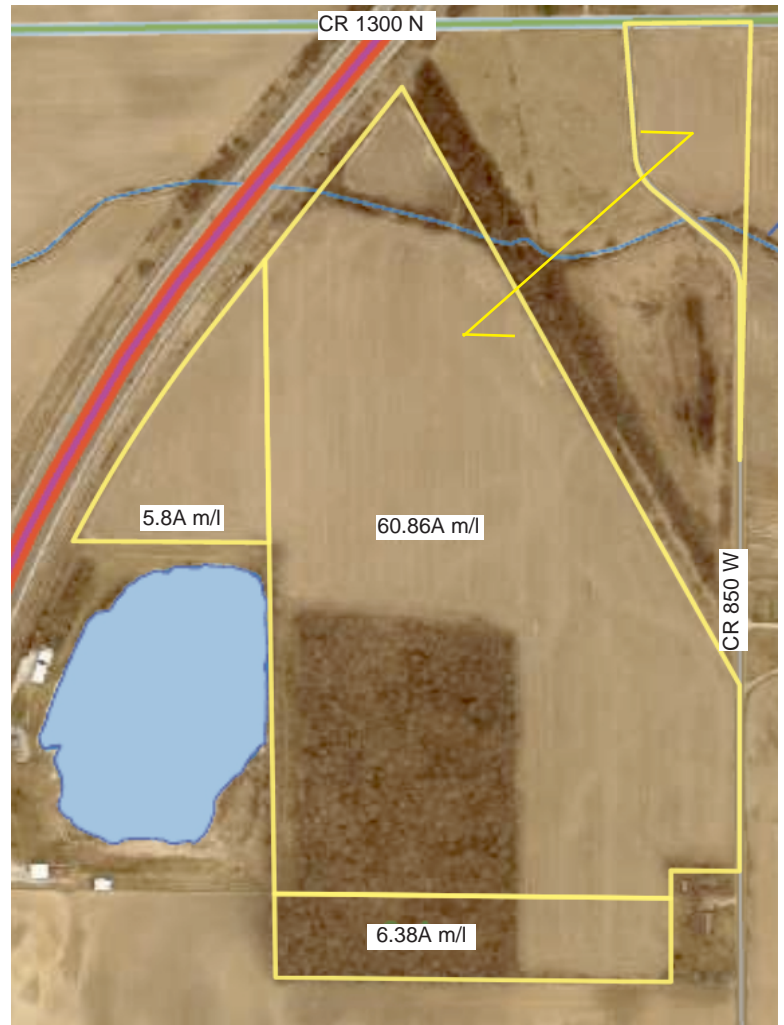
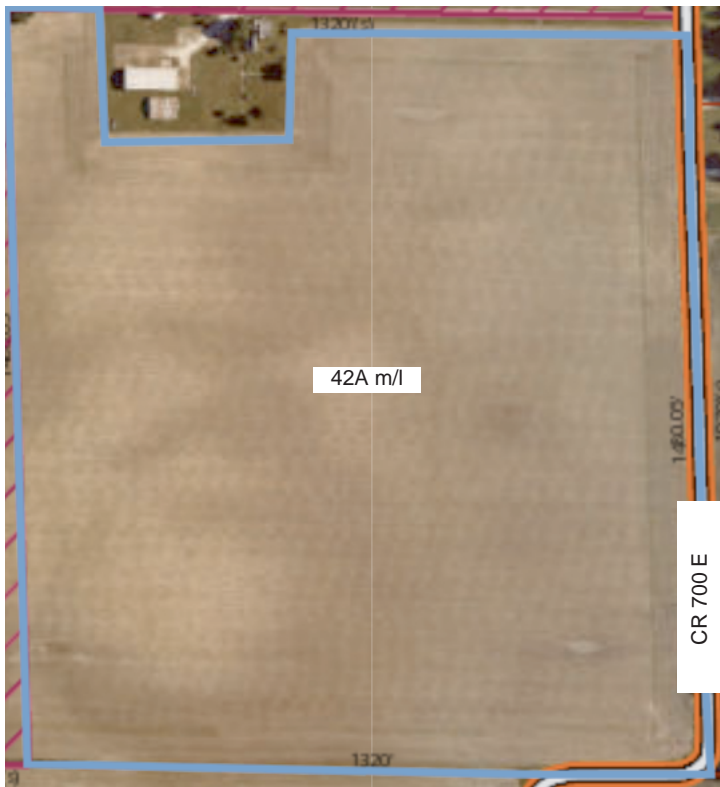
5243 S. ADAMS ST., MARION, IN

Between Marion & Jonesboro on SR 15 Eventfully Yours Rental Facility

Terms: 10% down in cash, corporate or personal check, at time of auction - balance of purchase price in cash at closing. Statements made at auction take precedence over all previously made statements, oral or printed. Sellers warrant clear title only, no other warranty! All final bid prices are subject to Seller's acceptance.

73 Total Acres m/l - 16 Woods - 57 Tillable
NW Corner Delaware County
Half mile east of I-69 on CR 1200 N (Delaware Co) to CR 850 W, north half mile.

42 Acres m/l - All Tillable Southern Grant County
Half mile east of I-69 on SR 26 to CR 700 E, south two miles.
Between CR 1050 S & CR 1125 S



Contact Merv Leffler 765-674-4818 or 765-661-5903

All announcements made at the time of the auction take precedence over any printed terms or prior statements, oral or printed.

Terms: As stated above



PRICE-LEFFLER

**COMPLETE SALES SERVICE
5875 S. 700 E., GAS CITY, IN 46933**

**MERV LEFFLER, 765-661-5903
AUCTIONEER LIC. AU01016000
REAL ESTATE BROKER LIC. RB14002723**

Not Responsible For Accidents

