

"PERSONAL PROPERTY & REAL ESTATE"

2,068 FSF, 2-Story, 4-Bedroom, 2-Full Bath Home on a Full Basement with a Total of 3,137 SF!

24' X 40' Insulated Hobby Barn W/Concrete Floor

1953 John Deere 40 Tractor with 3-Point Hitch!
Leader Tractor with 3-Point Hitch and Belt Pulley!

Central Air & Gas
Forced Air Heat!

"No Buyers Premium"

Lawn & Garden Equipment!

40' X 72' X 13' Pole Barn
W/Partial Concrete Floor!

Beverages & Food
Available Auction Day!

Wood Working Tools!

36' x 24' Garage
W/Concrete Floor!

AUCTION

Grasshopper 727K Zero Turn Mower
John Deere 320 Garden Tractor
John Deere 48" Mower Deck Attachment
John Deere 42" Snow Blower Attachment
John Deere 30" Rototiller Attachment
Troy-Bilt Pony Rototiller
Billy Goat Vac-Mulcher

Nice Country Setting!

Port-A-Jon's on-Site Auction Day!

Grandfather Clock!
Antique Furniture!
Collectable Toys & Crafts!

"Location, Location, Location"

REAL ESTATE SELLS AT NOON!

You Won't Want to Miss Your Chance to Own this Peaceful 2.26 Acre, Country Home on a Paved Road in Northern Wells County!

Directions: From State Road 1, go East on 1050 N approximately 3 miles to 600 E, turn North and Auction Site will be the first place on the West side of the Road.

Just Minutes Away from Hwy 1, Interstate 469, & the General Motors Truck Plant!

Location: 10618 N 600 E, Ossian, IN 46777

"Watch for Signs"

Date & Time: Sat. Nov. 16, 2019 @ 9:00 A.M. Eastern Time!

ITEM'S FORM INSIDE THE HOME

Dishes, Cups, Dinnerware, Cooking & Eating Utensils, Cookware, 4-Piece Condiment Set, Dish Cloths & Towels, Mixing Bowls, Electric-Mixer, Measuring Cups & Spoons, Food Storage Containers, Rolling Pins, Kitchen Table & Chairs, Collectable Plates, Collectable Thermometers, Reclining Chairs, Sofa, Twin Beds, Full Size Beds, Dressers, Chest-of-Drawers, Cedar Chests, Grandfather Clock, Craft & Sewing Items, Sewing Machine, Pictures, Knickknacks, Books, Magazines, etc.

TRACTOR'S, LAWN & GARDEN EQUIPMENT, & TOOLS

1953 John Deere 40-W W/3-Point Hitch (Serial #: 61549), Leader Tractor W/3-Point Hitch & W/Belt Pully, Grasshopper 727K EFI Zero-Turn Mower (Serial #: 6614062), Sears/Craftsman 3/4-HP Bench Grinder, 1994 John Deere 320 Garden Tractor W/48" Mower W/664 Hrs. (Serial #: MO0320X161119), John Deere 42" Front Mount Singe-Stage Snow Thrower (Serial #: MO3251X130018), John Deere 30" Rear Mount Tiller (Serial #: MO3261X120411), MTD Walk-Behind Multi Vac, Trailer-Style Lawn Chemical Sprayer, Front-Tine Garden Tiller, Troy Bilt Pony Electric-Start Garden Tiller, Stihl Model 041AV Chain Saw, Sears/Craftsman 5-HP Brush Chipper, John Deere 1-Bottom Plow (Fits LA Model Tractor), John Deere Cultivators (Fit LA Model Tractor), 5-HP Coleman Air Compressor, Black & Decker 14" Chop Saw, Milwaukee 7" Buffer, Farm HI-Jack, Radio-Flyer Wagon, Various Tool Boxes, Ladders, Mechanical Tools, Wrenches, Sockets, Screwdrivers, Taps & Dies, Equipment & Tractor Manuals, etc.

ITEM'S FROM THE WOOD SHOP

2-H.P. Sears/Craftsman Air Compressor, 6-Tier Lazy Susan Hardware Bin, Sprunger Model B31400 Vertical band Saw, Bench-Top Belt Sander, Bench-Top Buffer, 1-HP 15" Sears/Craftsman Floor Mount Drill Press, Grizzly Model G1066 Drum Sander, Misc. Wood Shop Hand Tools, Bar Clamps, C-Clamps, Various Size Wood Clamps, Cedar Wood New in Crate, DeWalt Electric Hand Saw, Sears/Craftsman Jointer, Master Craft Cordless 3/8" Drill, Master Craft Cordless Hand Saw, New Belt-Sandpaper, Misc. Craft Wood, Misc. Lumber, Misc. Hardware, Hand-Held Belt Sander, Palm-Held Sander, Power Miter Saw, Hawk (RBI) Scroll Saw, Woodworking Project Bench With Wood Vise, Grizzly Floor Mount Router, Powermatic Model 66 Table Saw, Grizzly Model G1495 Wood lathe, 1997 Grizzly 3 H.P. 20" Planer, Various Carpenter Tools, Hammers, Hand Saws, Wood Chisels, etc.

REAL ESTATE DESCRIPTION

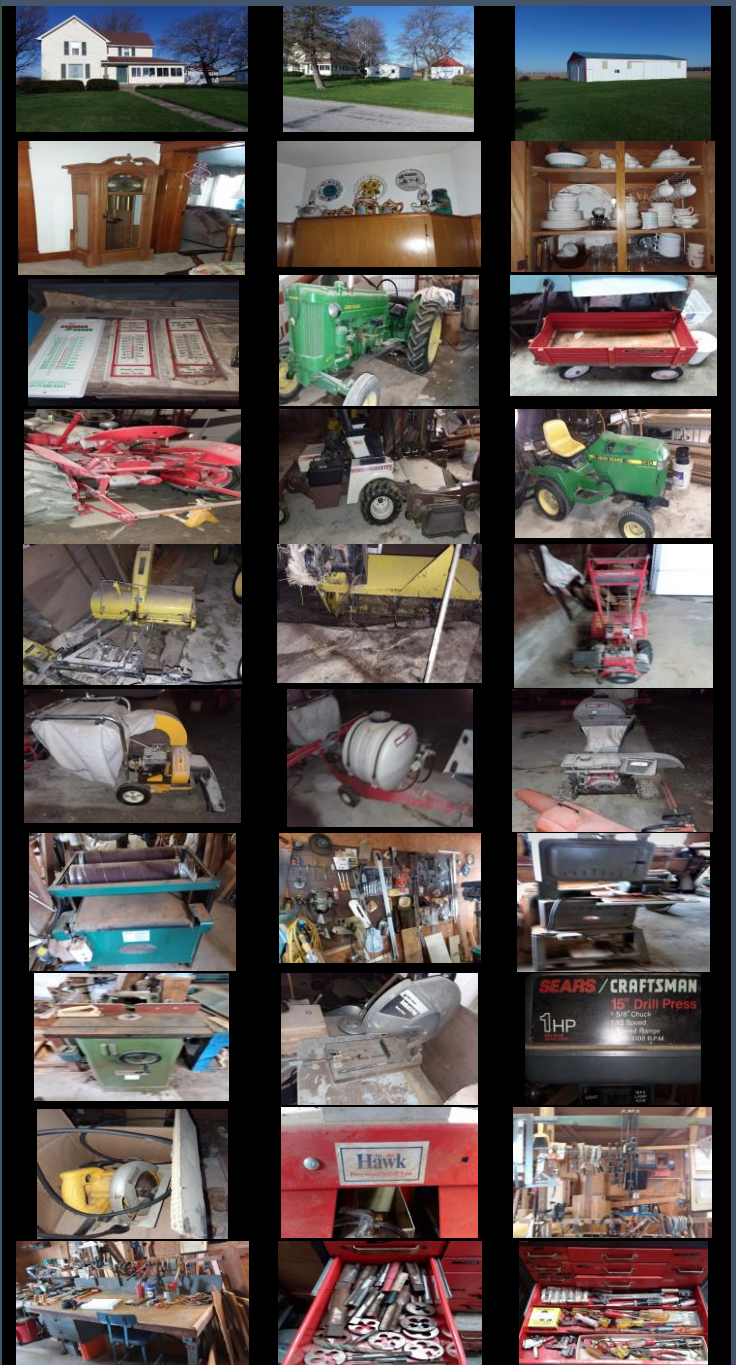
2,068 FSF 2-Story, 4-Bedroom, & 2-Full Bath Home w/central air and gas forced air heat on a Full Basement on 2.26 acres with a detached 36' X 24' Garage, a 24' X 40' Insulated Hobby Shop w/concrete floor, an outside Storage/Poultry Shed, and a 40' X 72' X 13' Pole Barn w/partial concrete floor.

Legal Description: 12-28-12 2.260A, S 364' of N 2156' of E 270' E/2 N E

Parcel Number: 90-02-12-100-004.000-008

County: Northern Wells

Township: Jefferson



All Information Contained in this Ad is Deemed Reliable but is Not Guaranteed!

Property Owner: LeMaster Trust, Donald R. & Betty J. LeMaster
C/O James R. LeMaster TTEE POA

Please See the Back Side of this Flyer for the Auction Terms & Conditions.

Not Responsible for Accidents!

Thank You
for serving our country &
protecting our freedoms!

Rustic Barn Auctions & Real Estate

260-739-4121

Follow Us on Facebook

Est. 2012

Bringing Sellers & Buyers Together

Auctioneer/Broker:

Gary L. Scare

Cell: 260-739-4121

Email: garyscare@outlook.com

Indiana Auctioneer License Number: AU11200080

Indiana Real Estate License Number: RB14049814

Visit Us at GoToAuctions.com
Auctioneer I.D. # 5858

Visit Us at auctionzip.com
Auctioneer I.D. # 30862

