



121 Jackson St.,
Plain City, OH 43064



**GET AUCTION
INFO BY TEXT!**
**TEXT AUCTION
TO 614-636-4191**

Kevin Wendt, CAI - President / Auctioneer / Broker
419.566.1599 | kevin@thewendtgroup.com

Dale Evans - General Manager / Auctioneer
260.894.0458 | dale@thewendtgroup.com

Nick Cummings, CAI - Auctioneer / Auction Advisor
740.572.0756 | nick@thewendtgroup.com

Bid Online at www.thewendtgroup.com

ONLINE ONLY FARM EQUIPMENT AUCTION

Auction Opens: Wed., December 16, 2020 at 9am
Horserace Closing Begins: Thurs., December 17 at 2pm

ONLINE ONLY AUCTION



FARM EQUIPMENT

5 Miles to Tiffin
5 Miles to Old Fort
15 Miles to Fremont
28 Miles to Findlay
46 Miles to Toledo



Auction Opens: Wed., December 16 at 9am
Horserace Closing Begins: Thurs., December 17 at 2pm

Bid Online at www.thewendtgroup.com

ONLINE ONLY FARM EQUIPMENT AUCTION

Auction Opens: Wed., December 16 at 9am
Horseshoe Closing Begins: Thurs., December 17 at 2pm

TRACTORS

LOT 1: Case IH 550 Quadtrac tractor, 30" tracks, powershift, leather seat, 6 hyd remotes, 1000 PTO, HID lights, Pro 700 display, 372 WAAS receiver, autos-teer, 38" hyd stalk stompers, 682 hrs, SN ZDF138072
LOT 2: Case IH Maxxum 125 MFWD tractor, C/H/A, 480/80R42 rear, 380/85R30 front, powershift, hyd shuttle shift, 3 hyd remotes, 540 PTO, 3pt, 471 hrs, SN ZCBE17522

TILLAGE

LOT 3: 15' Krause 4850 Dominator disc ripper, 9 shank, front straight discs, spring cushion parabolic shanks w/ wear shins, dbl rear discs, round bar rolling basket, SN 3309
LOT 4: Case IH 2500 7 shank deep ripper, coulters, spring trip shank, 3pt w/ Unverferth 500 caddy, SN JFH0042193
LOT 5: Unverferth Zone Builder 5 shank deep ripper, coulters, spring trip shank, 3pt w/ Yetter caddy, SN A37730108
LOT 6: 25' Krause 8000 Exclerator vertical till, walking tandem, 12.5-15 transport tires, adj angle, star wheels, flat bar rolling basket, hyd fold, SN 1012
LOT 7: 12' Miller offset disc, hyd raise, folding tongue, notched blades, SN 252HN83688
LOT 8: 24' Arts Way V2400 land plane, 3pt, hyd fold, dual tail wheels, SN AWW2400005243
LOT 8a: 33' Unverferth 220 double rolling harrow, single bar drag, hyd fold, hyd wing wheels, lights

PLANTING AND APPLICATION

LOT 9: J&M 2 compartment gravity seed wagon on gear, rear surge brakes, 295/75R22.5 tires, poly cup hyd drive seed auger, 3 stage spout, Auger Mate power unit, roll tarp, lights, SN 34448
LOT 10: 13 coulters Fast 8100 applicator, Clymer coulters w/ knives, 1000 gal poly tank, 380/90R46 tires, Ace hyd drive liquid pump, Raven flow meter, 2 electric section valves, Raven 450 controller, SN 300837
LOT 11: 1000 gal poly nurse wagon, Unverferth wagon running gear, 2" poly transfer pump, lights

HAY AND LIVESTOCK EQUIPMENT

LOT 12: New Holland 1431 discbine, 1000 PTO, center pivot, rubber conditioning rolls, SN 1190767
LOT 13: H&S Columbia TR68 8 wheel rake
LOT 14: Krone 4 basket hay tedder, 3pt, hyd fold, 540 PTO
LOT 15: New Holland 575 square baler, 540 PTO, hyd tension, ¼ turn chute, twine tie, hyd swing tongue, SN 82379
LOT 16: New Holland 1038 Stackliner bale wagon, 540 PTO, 11L-15 tandem tires, cable remote controls, SN 11683
LOT 17: 15' M&W 180 flail chopper, 9.5L-15 tires, 1000 PTO, lights, SN 58681
LOT 18: New Holland 165 manure spreader, Poly floor, slop gate, top beater, 11-22.5 tires, 540 PTO, SN 1012032, Like New

TILE PLOW AND EQUIPMENT

LOT 19: Johnson pull type tile plow, power feeder, 425/65R22.5 tires, 4", 6", 8", and 10" boots and points



LOT 20: Trimble FMX display, field level II unlock, RTK, AG 25 receiver, VM 415 controller, wiring for tile plow

LOT 21: Johnson 3pt trench filler



TRUCK, TRAILERS & GRAIN CART

LOT 22: 1991 International 4900 grain truck, DT466, 6+1 manual, tandem axle, twin screw, spring ride, 235" WB, 11R22.5 tires, 20' hyd dump bed w/ side-boards and wood floor, tarp, shows 126,776 miles, VIN 1HTSDZ7NXM320908

LOT 23: 2001 Trailstar 33' aluminum dump trailer, 35' steel frame, coal chute, air tailgate, spring ride, roll tarp, VIN 1TD9DS34B93106614

LOT 24: Richardton 960 dump cart, 20.8-38 bar tires, ext tongue, SN 502

LOT 24a: J&M 875 grain cart, 66x43.00-25 tires, 1000 PTO, hyd spout, roll tarp, camera, SN 3412



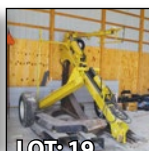
FARM MAINTENANCE

LOT 25: 5' Williams Hardee H-20160-CO ditch bank mower, 3pt, 540 PTO, stump jumper

LOT 26: Seastrom scissor lift, 12 volt, 12'x 6 ½' platform, tow bar

LOT 27: 14' Schulte SRW1400 rock windrower, 540 PTO, hyd raise, 9.5L - 15 tires, SN R20000324304

LOT 28: Schulte RS320 Jumbo rock picker, hyd drive chain pickup, hyd dump, 16.5L-16.1 tires, SN 9001058304



INSPECTION DATES:

Sat., December 12 • 10am-2pm
Wed., December 16 • 8am-5pm
Thurs., December 17 • 8am-2pm

INSPECTION ADDRESS:

805 West Co Rd 592 Tiffin, Ohio 44883
Directions: From Tiffin at the intersection of SR 53 and SR 100, travel North on SR 53 for 4 miles. Turn Left (West) on County Rd 593. Travel 8/10th of a mile to the inspection site.

EQUIPMENT LOADOUT:

FRIDAY, DECEMBER 18TH, 9AM - 3PM

PAYMENT: Payment can be made by credit card, wire transfer, E-check, or by bringing payment of cash or check on Friday, December 18th (during loadout).

EQUIPMENT REMOVAL: All equipment must be removed no later than Wednesday, December 23rd. All equipment must have proof of payment prior to removal.



**FOR EQUIPMENT QUESTIONS,
CALL AUCTION MANAGERS:
Nathan Whitney 740-505-0482
Nick Cummings 740-572-0756**

Bid Online at www.thewendtgroup.com