

- 1** RHODES SHEAR - 12' x 1/4" CAPACITY. WORKS, HAS HYDRAULIC LEAK. INFO: RHODES PATENT QUOTE NUMBER 10001. NEW HYDRAULIC SYSTEM USES WEIGHT FILL HYSPIIN 100.0 OIL.



- 1A** CATERPILLAR FORKLIFT LP, MODEL GC30K SERIAL #AT83C-00616. 186", 5800 LBS. HARD TIRE, ROLL GUARD. STARTS & RUNS, SMOKES, MACHINE DOES NOT IDLE. SEAT WORN OUT.



- 2** LAMINATOR MACHINE, MADE AT THIS FACILITY BY PARENT COMPANY. LAMINATES THE BACK OF CARPET PADDING. HEATING COIL NEEDS REPAIR. MACHINE HAS NUMEROUS PARTS AND NOT COMPLETELY PUT TOGETHER. PROCESS: INSTALLS LAMINATE ON THE BACK OF CARPET PADDING. INFO: CONE DRIVE, MODEL MC72210-BANU1, LUBRICATION SYN, RATIO IS 10:1, ELT10E2GC, EM49 215TC. E-LINE



- 3** J BOX CONVEYOR "575 ELECTRIC MOTOR WILL NOT WORK IN U.S." 7' WIDE.



- 4** PIECE OF CONVEYOR BED, CUT OFF OF A J BOX CONVEYOR, 7' WIDE x 158"



- 4A** (5) J BOX CONVEYOR MACHINE BELTS, USED, 28'



- 5** GRINDER ON FRAME- BALDOR STREAM COOLED ELECTRIC MOTOR. WORKS, WAS BEING USED IN THE SHOP.



- 6** METAL STORAGE BOX ON STAND, ATTACHES TO GRINDER



- 7** (7) STEEL OVAL SCREENS, 32" DIAMETER, 5/8" STAGGERED HOLE PATTERN.



- 8** HYDRAULIC OIL CIRCULATOR PUMP, WORLDWIDE INDUSTRIAL 60 HP MOTOR, EPACT-READY, 3 PHASE, MODEL #WWE60-18-575-364T, VOLTAGE 575, AMPS 55.9.



- 9** STEEL SHEET 4' x 8', 5/8" STAGGERED HOLE PATTERN



- 10** AIR COMPRESSOR, DOES NOT WORK. USED AS TANK ONLY.

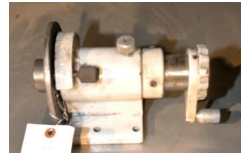


- 11** BURKHARDT & WEBER COLD CUT SAW, WORKS. MODEL #HKS630, AUFTRAGS-NR14 379, FEBRUARY 68, STERLING 5HP MOTOR, 1800 RPMS, 3-PHASE, 60 CYCLE, 220/440 VOLTS, 14 AMPS & 7 AMPS, GUSHER COOLANT PUMP, MODEL #11022E-S, HP 1/4. SERIAL #14379.



- 12** K.O. LEE SURFACE GRINDER, WORKS. 6" x 18" MAGNETIC CHUCK, CONDITION NOT GUARANTEED.



13 SMALL INDEXER**14** CINCINNATI TOOL SHARPENER, WORKS. SAW BLADE SHARPENER. IMPERIAL MOTOR, 5HP, 208/220/440 VOLTS. SERIAL #6D1P55. CONTROL VOLTS 110/220, 3-PHASE.**15** OBI STAMP PRESS - CONTROL PANEL, BRAKE SHOES, USED TO REDO THE BRAKE SHOES. MACHINE IS DISASSEMBLED, PARTS ON PALLETS.**16** PLASTASOL MACHINE - "BUILT FOR TOYOTA" TO PRODUCE PARTS FOR CARS. TOYOTA WENT TO DIFFERENT PROCESS AND THE MACHINE HAS NOT BEEN USED SINCE. PURCHASER CAN CONVERT IT TO SOMETHING ELSE, IT MIGHT WORK. HAS (2) I.R. OVENS. MACHINE WAS RUNNING.**17** POLYPROPANE VAT - 2 SECTIONS**19** WORTHINGTON ROLLAIR 60 AIR COMPRESSOR, 100 HP, WORKS. CHIMLEY ELECTRIC INDUCTION MOTOR, MODEL 5K365BK174, 75 HP, 460 VOLTS. 3560 RPM. AMERITHON FAN MOTOR, 2 HP. DISCONNECT MACHINE AT THE NEWEST CONNECTION. SERVICED BY WEST TENNESSEE AIRCOMP SALES & SERVICE, PINSON, TN.**20** POWDER COATING MATERIAL - PIONEER POWDER, TEXTURED GRANITE, TEXTURED BLACK, CARDINAL INDUSTRIAL FINISHES AND OTHERS. 100+/- BOXES

- 21** BOX OF NORTEK POWDER COATING, PRODUCT CODE E5SK35, DESCRIPTION: GREY PRIMER EPOXY, LOT #SD16190C, 55 LBS, 25 KGS, BOX #19.



- 23** REPLACEMENT DOOR FOR WEIGH HOPPER



- 24** (5) ROLLERS AND (1) SMALL ROLLER, USED



- 25** (30) SAW BLADES, 15" DIAMETER WITH 6" ARBOR HOLE



- 26** (20) SAW BLADES. (16) - APPROX. 22" DIAMETER WITH 4 1/2" ARBOR HOLE. (4) - VARIOUS SIZES.



- 27** (7) SPACERS - 16" DIAMETER, 4 1/4" ARBOR HOLE



- 28** (9) PRE-CHOPPER SPACERS AND (4) ROUND SPACERS. (9) ARE 22" DIAMETER, 4 1/4" ARBOR HOLE; (4) 22" DIAMETER, 5 7/8" to 6" ARBOR HOLE.



- 29** (5) ROLLERS. BLUE ROLLERS LOOK NEW.



- 30** TECHNOPACK CONTINUOUS BAND SEALER, CONTROL MOUNTED ON TOP, CONDITION UNKNOWN
- 31** PROTO TYPE BAND SEALING MACHINE, NOT COMPLETE
- 32** STEEL SHOP TABLE WITH MESH TOP, 4 X 4 SQUARE TUBE LEGS AND FRAME
- 33** LIFT BOOM POLE, 85" LONG, MADE OUT OF 3" SQUARE TUBING
- 34** USED MOTORS AND DRIVES, CONDITION UNKNOWN ONE MOTOR IS STERLING ELECTRIC MOTOR, 15 HP, 3-PHASE. LARGE MOTOR WITH MILDEP MOBILE GEAR 629.
- 35** ENGLISH WHEEL, NEW, NEVER USED
- 40** LINCOLN GENERAL PURPOSE MOTOR, MODEL SF4T300T65Y, 300 HP, RPM 1785, KW 224, VOLT 575, FLA 282, SF 1.15, SFA 323, PF 83.5. SERIAL #M32002530-1121-01. 3-PHASE. CONDITION UNKNOWN.
- 41** ROLLING RACK WITH (3) ROLLERS. MISSING WHEEL.



42 JIG STAND WITH HYDRAULIC CYLINDER



43 OLSUN ELECTRICS CORPORATION TRANSFORMER, DRY TYPE, CLASS AA, CONDITION UNKNOWN.



44 (2) WHITE SAFETY RAILINGS, 13' 6" LONG, 36" - 44" HEIGHT.



45 YALE 18-TON CHAIN



46 PONY 5-TON CHAIN



47 I-BEAM TROLLEY - TOP IS 4 3/4", 20' 3" LONG AND ANOTHER SMALLER PIECE - TOP IS 5 1/4", 15' 7" LONG, USED



48 SMALL METAL FLANGES AND (5) or (6) ROUND STEEL RINGS. 62" DIAMETER, 33" CENTER HOLE. THICKNESS 1 1/4", 2 5/8", AND 5". MAY NOT ALL BE SEPARATE PIECES.



49 POLYETHYLENE TANK WITH HEATER CONTROL ATTACHMENT



- 50 DELTA DRILL PRESS & ROLLER STAND - RUNS, BALDOR MOTOR, 4 HP, 110 VOLTS



- 51 JIG LIFT POLE WITH STRAPS



- 52 STEEL SHOP TABLE, 33" x 15'



- 53 ASSORTMENT OF ROLLER CHAIN AND CONNECTOR LINKS. VARIOUS SIZES (LOCATED ON LOT #57 TABLE)



- 54 CRAFTSMAN TABLE SAW, 10" BELT DRIVE, 3 HP, RUNS.



- 55 STEEL SHOP TABLE, 3' x 9' 10"



- 56 BLUE STEEL CABINET, 4' x 6'. DOORS ON EACH SIDE, SHELVES



- 57 (2) LIGHTWEIGHT STANDS - BOTH 2' x 4'



- 58 TRI-POD SHOP STAND



Williams - AMTAC, Inc. - Online Only Auction 11/30/2018-1/8/2019

59 (2) ARO AIR-OPERATED DIAPHRAGM PUMPS, NEW



60 (2) ARO AIR-OPERATED DIAPHRAGM PUMPS, NEW



61 (2) ARO AIR-OPERATED DIAPHRAGM PUMPS, NEW



62 (2) ARO AIR-OPERATED DIAPHRAGM PUMPS, NEW



62A ARO OPERATED DIAPHRAGM PUMP, USED VALVE & HYDRAULIC PUMP



63 STORAGE RACK WITH 5 SHELVES



64 STEEL A-FRAME SHOP-STORAGE RACK - RACK ONLY - WITH DOUBLE SHELVES, 38" WIDE, 8' LONG. 5 SHELVES PER SIDE. ---INVENTORY NOT INCLUDED---



65 INVENTORY OF STEEL BRACKETS, MISC IRON PIECES AND MISC RODS (LOCATED ON EAST SIDE OF LOT #64 RACK)



66 INVENTORY (LOCATED ON WEST AND EAST SIDE OF LOT #64 RACK)



- 67 STEEL ROLLING SHOP-CART, 30" x 4' - CART ONLY - ---INVENTORY NOT INCLUDED---



- 68 INVENTORY OF NEW & USED BELT PULLEYS (LOCATED ON LOT #67 CART)



- 69 SHOP STAND



- 70 STEEL WELDING TABLE, 5' x 10' - TABLE ONLY - STEEL TOP WITH SIDE EXTENSION. ---INVENTORY ON TOP NOT INCLUDED---



- 71 STEEL ROLLING CART, 24" x 24", RUBBER WHEELS



- 72 (2) LARGE C-CLAMPS (1) LARGER & (6) SMALLER ONES



- 73 WELDING ROD CABINET, ELECTRICAL HOOK-UP FOR HEATER. CONDITION UNKNOWN.



- 74 MISC USED PARTS OF INVENTORY - SAW BLADES & MORE (LOCATED ON LOT #70 TABLE)



- 75 BLUE STEEL STORAGE RACK - RACK ONLY - 12" x 10', 5 SHELVES. ---INVENTORY NOT INCLUDED---



- 76 INVENTORY ASSORTMENT OF PILLOW BLOCK BEARINGS, FLAT BASED BEARINGS, TWIN 16 SUPER PILLOW BLOCK THOMPSON, NEW BROWNING BEARINGS, ASSORTMENT OF COLLARS (LOCATED ON LOT #75 RACK)



- 77 WHITE METAL BOLT CABINET WITH STORAGE BINS AND SHELVES. ---INVENTORY INCLUDED WITH CABINET---. COLLECTION OF NEW & USED HOSES, BARBS, TIPS, ETC.



- 78 BLACK SHOP STAND - 12" x 57" - INCLUDES INVENTORY- ASSORTMENT OF BOLTS



- 79 (5) ASSORTED WELDING HELMETS, GRINDING SHIELDS



- 80 STEEL TOOL BOX, STEEL PLATE & OIL PAN



- 81 BLUE STEEL STORAGE RACK -13" x 51" - RACK ONLY - 10 SHELVES. ---DOES NOT INCLUDE INVENTORY ON SHELVES---



- 82 ASSORTED INVENTORY OF CAPS & BOLTS AND (7) BOXES (LOCATED ON FLOOR AND ON LOT #81 RACK)



83 BLUE STEEL STORAGE RACK, 21" x 87", 5 SHELVES ---RACK ONLY---



84 STEEL SHOP RACK WITH WOOD TOP - 22" x 93", MISC ITEMS INCLUDED - BOX OF PEG BOARD HANGERS & MORE



85 STEEL SHOP TABLE, 34" x 5' - TABLE ONLY



86 STEEL RINGS (HANGERS NOT INCLUDED)



87 SMALL STORAGE RACK WITH STORAGE SHELVES AND TUBE



88 (2) BLUE STEEL SAFETY RACKS



89 HUSKY POWER WASHER, CONDITION UNKNOWN, HEATER AND 50-GALLON METAL DRUM.



90 ASSORTMENT OF CARDBOARD LIDS



91 (12+/-) BOXES OF CLEAR WRAPPING AND ROLLS OF PAPER



92 BENCH GRINDER STAND, DRILL PRESS, SHOP STAND



93 ROLLER ON METAL STAND



93A 2-WHEEL DOLLY, TIRE FLAT. ALSO INCLUDES (4) EXTRA RUBBER WHEELS AND (4) HYDRAULIC JACKS



94 ROLLING SHOP CART, 24" x 60" - INCLUDES USED IRON/ STEEL, PARTS TO A PUMP, ETC.



95 (4) STEEL STANDS



96 DOUBLE STORAGE RACK, METAL SHELVING - RACK ONLY - 39" x 99". 5 ROWS OF SHELVING ON EACH SIDE. ---INVENTORY NOT INCLUDED---



97 USED GEAR DRIVE, ALUMINUM BLOCKS, STC FILTER REGULATOR MODEL AW4000, HOSES, INSULATED, ROLLERS, ETC. (INVENTORY LOCATED ON EAST SIDE OF LOT #96 RACK)



98 WHITE DRIVE PRODUCTS, ROLLER STRATOR, NEW IN BOX, SOME CHROME, (2) CHROME MOTOR ROLLERS, MFD PRESSURE VALVE 145 PSI, SCREW DRIVERS, SOCKETS, ACE DIGITAL HEAT GUNS, WELDER WIRE, DRILL BITS, CHAIN HOOK, EMPTY PLASTIC CASES, SPARK PLUGS, BATTERY IMPACT, BLUE PIPES, STEEL RODS, STEEL BRACKETS, WHEELS, TURN BUCKLES. CONDITIONS ARE UNKNOWN. (INVENTORY LOCATED ON THE FLOOR AND ON THE WEST SIDE OF LOT #96 RACK)



99 CHROME PICK-UP TRUCK RAILS



100 SPECIALTY METAL SHOVELS, SHOP MADE



101 SPECIALTY WRENCH



102 (2) SPECIALTY WRENCHES



103 KIZER 6061 T6511 ASTM B21 HEATING COIL



104 REPAIR PARTS - DLS BRAKE ROTOR, 43#166, NEW ENDS FOR CYLINDER, INTERNATIONAL SOLENOID DG 05-2C-115VAC7IWV, INTERNATIONAL FLUID POWER, (2) MOTOR ROLLERS 220VAC, NEW WHITE ROLLER STATOR, ALUMINUM BLOCKS, ALUMINUM HYDRAULIC VALVES, (2) SUN INDUSTRIES HYDRAULIC VALVES, STC FILTER REGULATOR MODEL 4AW4000, BNA PRESSURE REGULATOR M4HV430-15-AS, NORTHMAN SOLENOID DIRECTIONAL VALVES, (2) FLUIDYNE PRESSURE VALVES



105 ASSORTMENT OF STEEL - (2) STEEL PLATES, CHANNEL IRON, JIG BRACKETS, STEEL STANDS AND SHORT PIECES



105A (2) BOXES OF SHEAR BLADES, 6 PER BOX. APPEAR TO BE NEW, WRAPPED IN PAPER, IN WOOD BOXES.



105B (2) 110 PORTABLE LIGHTS



106 (3) ROLLS OF FLEXFOAM WRAP (PARTIAL ROLLS)



108 STEEL STORAGE RACK - 7 SHELVES WITH SOME BINS 14" x 3'



109 STEEL STORAGE RACK - 21" x 8' - MISC BOLTS AND SOME WRAP TAPE



110 ROLLING SHOP RACK



111 ROLLING SHOP DOLLIES, SMALL



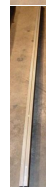
112 STEEL SHEETS, THIN, (5) CONES AND SILVER CONE



113 STEEL FLOOR STANDS



114 TOLOMATIC ELECTRICAL BAR MAX PRESSURE 100 PSI, 6.9 BAR



- 115** RACK WITH (128) PIECES-1 1/2" x 2 1/2" x 11" GAUGE HR DRY TUBE METAL, 59.500 AND (18) 2" x 2" SQUARE TUBING.



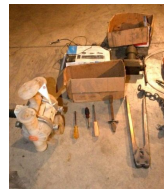
- 116** STEEL STORAGE RACK (LOCATED BEHIND RHODES SHEAR). INCLUDES ASSORTMENT OF MISC ODD PIECES. (2) PIECES OF STEEL 49", SOME STAGGERED-HOLE PATTERN, THIN, SHORT PIECES, GALVANIZED PIPE. INCLUDES ALL OF THE STEEL SHORT PIECES.



- 117** HIGH PRESSURE WASHER HOSE AND SPRAY WAND



- 118** MISC. TOOLS, SCREWDRIVERS, SANDER, BANDING CLAMP, PEG BOARD HANGERS, AIR HOSE, PART OF A WENCH, CONDUIT CONNECTORS, CLARION CD PLAYER, PLASTIC PUMP



- 119** (2) CHROME BARS 102" EACH AND (2) PIPES WITH CAPS 93" EACH



- 120** PALLET OF METAL AND STEEL PIECES



- 121** (3) PALLETS AND (2) BASKETS OF STEEL



- 122** STEEL ROLLING RACK, 8' WIDE x 12' LONG



123 SHOP STAND FOR WELDING OR WORK STATION, 10' LONG 75" TALL, SOLID PIECE, 47" DEEP, WITH PEG BOARD



124 SHOP STAND FOR WELDING OR WORK STATION, 10' LONG 75" TALL, SOLID PIECE, 47" DEEP, WITH PEG BOARD



125 SHOP STAND FOR WELDING OR WORK STATION, 10' LONG 75" TALL, SOLID PIECE, 47" DEEP



126 SHOP STAND FOR WELDING OR WORK STATION, 10' LONG 75" TALL, SOLID PIECE, 47" DEEP, WITH PEG BOARD AND 3 SHELVES



127 SHOP STAND FOR WELDING OR WORK STATION, 10' LONG 75" TALL, SOLID PIECE, 47" DEEP, WITH PEG BOARD



128 ALUMINUM BAR - APPROX. 18' LONG; (3) PIECES OF ALUMINUM CHANNEL APPROX 12' LONG; ALUMINUM FLAT PIECE 28" WIDE x 10' LONG AND NUMEROUS SHORTER PIECES



129 PALLET OF ALUMINUM PIPE AND FLAT PIECES, MISC LENGTHS



130 PALLET OF STEEL, SOLID ROUND STOCK, FROM APPROX. 5" UP TO 40".



131 SCREEN SHEET 4' x 8' AND SMALL PIECES



132 (4) PALLETS OF MISC STEEL AND IRON PIECES



133 (4) PALLETS WITH I-BEAM SQUARE TUBING RECTANGLE AND FLAT PIECES



134 (4) PALLETS OF MISC USED STEEL. PIECES OF I-BEAMS



135 (4) PALLETS OF USED STEEL, I-BEAM PIECES, SOME TUBING, ELECTRIC MOTOR AND MISC.



136 (4) PALLETS OF SALVAGE IRON AND STEEL. INCLUDES SOME BENT ROUND TUBING.



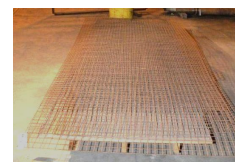
137 EXTRA HEAVY PIECE OF THICK IRON BEAM AND SOLID ROUND ROLLER



138 PALLET OF MISC TOOLS (2) TRACT ROLLERS, DRILL PIECES, DRILL BITS, LARGE BOLT AND SHOP STAND



139 PIECES OF WIRE PANELS, 5' x 10'



140 STEEL GATE WRENCH, 63" x 75"

144 (3) BOXES OF 14" x 1" PIPE AND MISC.

145 (5) PIECES OF SQUARE & RECTANGLE STEEL TUBING & PIECES OF CHANNEL IRON WITH BRACKETS WELDED ON IT. TUBING IS 3' x 3', 2' x 3' AND 4' x 4'.

146 PIPE 6" x 21'

147 (4) PIECES SOLID FLAT STOCK, SIZES - (3) PIECES ARE 2" x 4" AND 139" LONG. AND (1) PIECE IS 1" x 2 1/2" AND 149" LONG.

148 PALLET (5) STEEL PIECES - (4) PIPES AND (1) PIECE SQUARE TUBING 8" X 10" AND 101" LONG. PIPE SIZES ARE 8" x 75" LONG; 10" x 51" LONG; 3" x 89 1/2" LONG; 3" x 92" LONG



149 (7) PIECES OF SHARON TUBE CO. PIPE -171 1/2" LONG, WALL AND MISC LENGTHS. INFO: 5.000 x 4.500 x .2500.



150 PALLET OF PIPES, (1) - 2" X 0.154" X 21" LONG PLUS (13) MISC PIECES



151 PALLET OF STEEL RODS



152 PALLET OF SHORT PIECES OF PIPE AND INVENTORY (LOCATED ON THE WEST WALL)



- 153** PALLET OF STEEL RODS AND SOLID STOCK. ROUND STOCK SIZES 3", 2", 1" AND SMALLER. SQUARE STOCK SIZE 1" x 1".



- 154** STEEL STORAGE RACK, FULL OF SHORT STEEL PIECES INCLUDING CHANNEL, PIPE AND FLAT IRON PLUS SOME BUCKETS AND RINGS



- 155** (2) TRI-POD SHOP STANDS AND (1) SMALL RACK



- 156** PALLET OF STEEL PIECES



- 157** PALLET OF STEEL PIECES



- 158** STEEL RACK WITH FLAT STEEL, TUBE STEEL, ANGLE IRON, PIPE



- 159** PALLET OF CONVEYOR STYLE CHAIN



- 160** TUB OF SALVAGE PARTS & MISC.



- 161** TUB OF STEEL CHIPS



162 SALVAGE MACHINES, POSTS, CONVEYOR BOX, CONE, AND BLUE STEEL PLATE



163 STEEL SALVAGE TRUCK BED FULL OF SCRAP SALVAGE STEEL



164 LARGE ASSORTMENT OF DUCT WORK SALVAGE



165 PALLET OF PIPES, VARIOUS SIZES



166 (6) LARGE BELTS



167 CHALLENGE AIR HORIZONTAL AIR COMPRESSOR, 11.5 HP, 60 CYCLE MOTOR, 3 PHASE. CONDITION UNKNOWN.



168 (6) PIECES OF WALKWAY STEPS, 17" WIDE. (4) ARE 15' LONG AND (2) ARE 14' LONG. 14", 15" AND 13" TREAD.



169 PILLAR TECHNOLOGIES MODEL OUTPUT TRANSFORMER. RATING 75KW AT 40c AMBIENT. HAS CONTROLS AND A LARGE CABLE. CONDITION UNKNOWN.



170 LARGE STEEL RING



171 GROUP OF SALVAGE IRON



172 ELECTRIC MOTORS, BRACKETS, STEEL ARMS, METAL COLLARS, MISC. USED PIECES



172A STEEL FRAME VAT - 250 GALLON



173 TUB OF SALVAGE PARTS AND MISC.



174 PALLET OF USED SAW BLADES, VARIOUS SIZES



175 SHOP MADE PRESS



176 PALLET OF MISC USED PARTS, IRONWARE, COLLECTIBLE DISCONNECT BOXES, BOLTS



177 BOX OF ALUMINUM AND IRON



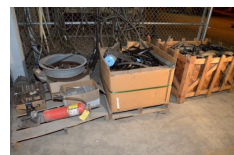
178 STEEL JIGS



179 (2) BALMAC VIBRATION ANALYZERS, MODEL 216D. CONDITION UNKNOWN.



180 PALLET OF MISC IRON, PALLET OF BANDING, RUBBER HOSE AND BELTING AND A GROUP OF HYDRAULIC HOSES AND FAN BELTS.



181 HORIZONTAL AIR COMPRESSOR TANK, NO MOTOR



182 HORIZONTAL AIR COMPRESSOR TANK. TANK & FRAME ONLY



183 HORIZONTAL AIR COMPRESSOR, MOTOR CONDITION UNKNOWN. MAY NEED REPAIR.



184 ROLLING SHOP CART WITH MISC. ITEMS AND SHOP STAND



185 DIPPING VAT



186 GROUP OF WHITE STEEL HANGER RACKS



187 (3) MESH CROSS RACKS - GOOD FOR WOOD STORAGE



188 (2) PALLETS OF ELECTRIC WIRE



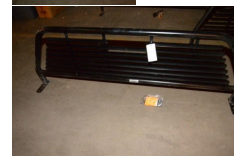
189 ROLLING CART WITH USED PIPE



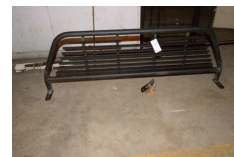
190 SATELLITE STAND WITH A LIGHT



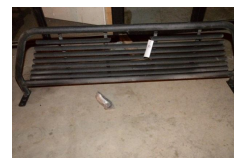
191 BLACK HEADACHE RACK



192 BLACK HEADACHE RACK



193 BLACK HEADACHE RACK



194 BLACK HEADACHE RACK



195 BLACK HEADACHE RACK - NO SCREWS



196 BLACK HEADACHE RACK - NO SCREWS



197 HEADACHE RACK - EXPANDED METAL INSERT



198 HEADACHE RACK - EXPANDED METAL INSERT



199 FRAME ONLY FOR HEADACHE RACK



325 COMPUTER STATION TABLE



326 4-DRAWER LATERAL FILING CABINET



327 WOOD STORAGE CABINET, DECORATIVE TREE, MICROWAVE STAND, PICTURE FRAMES AND "COUNT YOUR BLESSINGS" CLOCK



328 OAK COMPUTER DESK, ARM CHAIR, OAK 2-DRAWER FILING CABINET, DARK STORAGE BOX SHELF, (3) SMALL PAINTINGS AND DRY ERASE BOARD



329 METAL WARDROBE CABINET WITH MISC OFFICE SUPPLIES



330 (2) 2-DRAWER FILING CABINETS



331 ROLLING TYPING TABLE, COMPUTER TOWERS, PRINTERS, CORDS AND MISC.



332 OLD COMPUTER DESK, DESK CHAIR, OAK GRAIN BOOKCASE, DARK BOOKCASE, MR COFFEE MAKER AND (3) PAPER CANS



333 MAHOGANY DESK, TOP IS SCRATCHED, (2) BOOKCASES WITH ADVERTISEMENT BOOKS. NO OFFICE FILES INCLUDED.



334 MAHOGANY DESK, DESK CHAIR AND (2) SMALL TABLES



335 PLASTIC CABINET, HEATERS, MISC OFFICE SUPPLIES AND ALUMINUM "AMTAC" ADVERTISEMENT CUPS



336 PANTHER PRODUCTIONS BRAZILIAN JIU JITSU VCR TAPES



337 (4) BLUE OFFICE GUEST ARMCHAIRS, NAUGAHYDE WITH BRADS

