

PUBLIC REAL ESTATE AUCTION

53 Acres • 15 Tillable Acres
Saturday, October 19, 2019 @ 11:00 A.M.

00 Faggs Manor Rd., Cochranville, PA 19330- Chester County



Directions: Go east on Street Rd. Turn rt. at Faggs Manor Church onto Faggs Manor Rd. Go 1/2 mi, property on rt. along Faggs Manor Rd.

Property Description: Ideal farmette/homesite close to the small town of Cochranville. 53 acres with a mix of wooded & tillable land situated in a peaceful, quiet, country setting with a pond & East Branch Big Elk Creek. Approx. 15 tillable acres. A perfect location for a produce farm, hobby farm, horses, cattle, free-range chickens, etc. Land is enrolled in the PA Farmland Preservation Program and Act 319 Clean & Green Program.

Call Glenn at 717-271-8868 for more details or a private showing.

Terms: Settlement on or before December 3, 2019. \$45,000.00 down payment on the day of the auction. 2% transfer tax to be paid by the buyer. Real Estate taxes to be prorated from settlement day.

Annual Property Taxes: \$394.00

Attention Realtors: 1% Broker Participation offered to Realtors with a buyer, your buyers must be preregistered, 48 hours prior to the auction.

For additional pictures go to www.beiler-campbellauctions.com or www.GoToAuction.com or www.auctionzip.com ID# 23383

BEILER-CAMPBELL
AUCTION SERVICES



AY# 002026

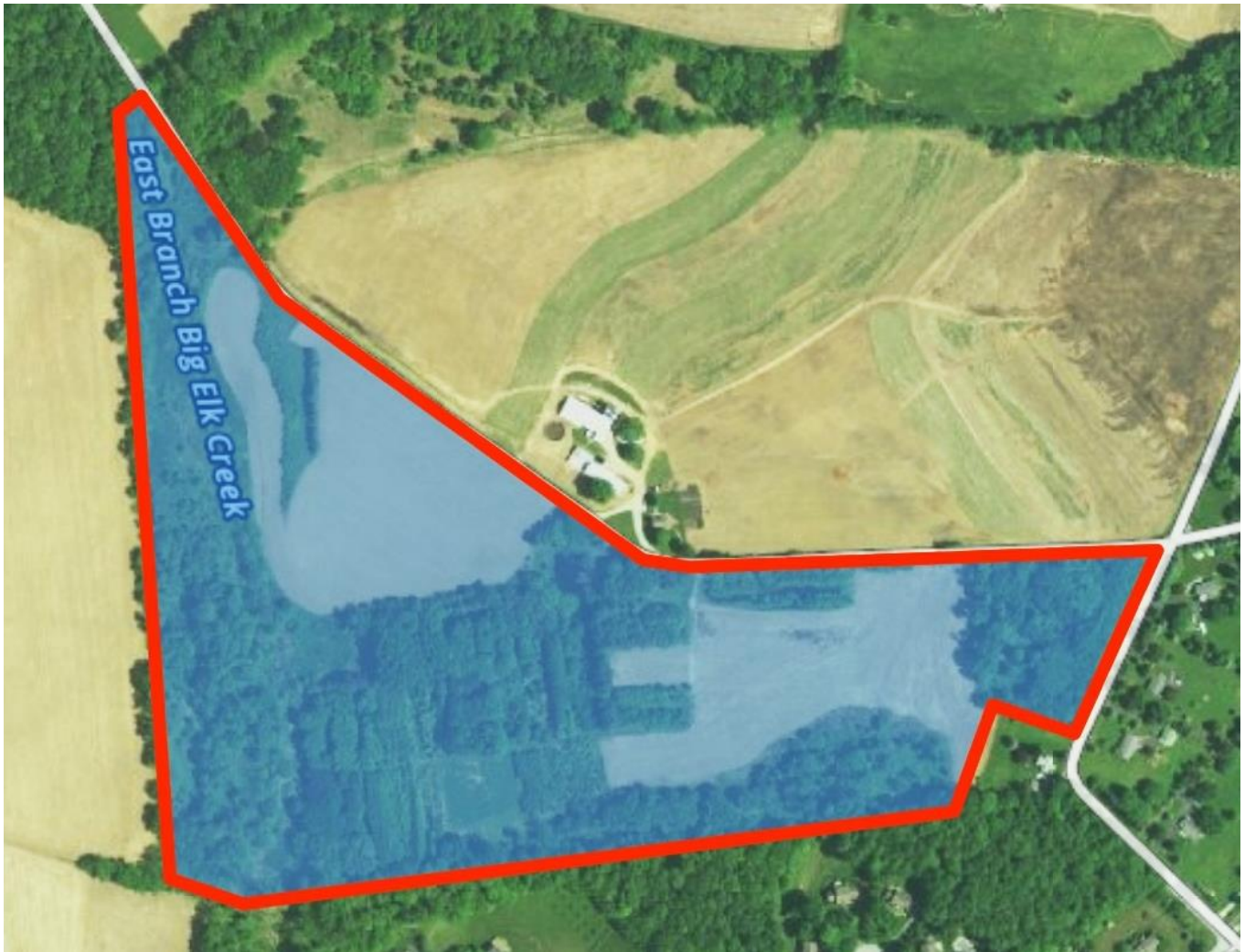
www.beiler-campbellauctions.com • 888-209-6160

Auctioneers:

J. Meryl Stoltzfus (717) 629-6036 AU#005403
Glenn Horst (717) 271-8868 AA#019298

Sellers: Douglas & Jessica Engle





For additional pictures go to www.beiler-campbellauctions.com or www.GoToAuction.com or www.auctionzip.com ID# 23383

BEILER-CAMPBELL
AUCTION SERVICES



AY# 002026

www.beiler-campbellauctions.com • 888-209-6160

Auctioneers:

J. Meryl Stoltzfus (717) 629-6036 AU#005403

Glenn Horst (717) 271-8868 AA#019298

Sellers: Douglas & Jessica Engle

