

Public Real Estate Auction

21 +/- Acre Lancaster Co. Farm
5 BR Dwelling • Warehouses & Storage Buildings
Trucks & Trailers • Tractors • Farm Equipment
Saturday May 28 @ 8:30 AM Real Estate @ 12:00 Noon

1347 Keener Rd. Bainbridge PA 17502 - Lancaster Co.



Directions: From Bainbridge Route 441 North to right onto Keener Road to property on right. Or from Elizabethtown west on Turnpike Road to left onto Black Swamp Rd to right onto Keener Rd to property on left.



Property Description: 20.8 +/- acre Bainbridge area farm with 5 bedroom 2 bath dwelling. Property has 48' x 600' warehouse & equipment storage building w/ 15' ceilings and attached 30' x 30' truck unloading area with (2) docks. Also 44' x 500' building w/ 15' ceiling and 136' truck shop with office & mech. room. Remainder of building used for equipment storage. Older 42' x 300' building needing some repairs, w/ partial dirt floor. House is mobile home with framed addition for a total of 5 bedrooms and 2 baths. Also eat in kitchen, living room and laundry area. Property has well and onsite septic. Farm has approx. 14 acres tillable and is enrolled in Clean & Green but not preserved.



Open House Dates: Sat., April 30 & May 7 from 1- 4 PM And Thur., May 5 from 4-7 PM

Terms: Down payment of \$ 50,000.00 required day of auction. Settlement on or before July 27, 2022, Transfer taxes to be paid by buyer. Real Estate taxes shall be prorated. Annual taxes +/- \$ 2618.00

Attention Realtors: 1% Broker Participation being offered to Realtors who preregister with their buyers and who become the successful bidder on day of auction. Pre-registration forms are available on-line at www.beiler-campbellauctions.com



Auctioneers Notes: Many possibilities and great opportunities with this farm offered by motivated sellers. Building currently used as truck shop, warehouse & equipment storage. The buildings & tillable acres offer the combination of farming & business. Only minutes from Susquehanna River in Conoy Twp and Elizabethtown Area School District.

Trucks & Trailers: '97 Freightliner w/ C10 Cat motor 701K miles; '94 White GMC truck tractor w/ Cat 5EK motor; '95 Kenworth T600 truck tractor w/ Cat 5EK motor; '94 Freightliner FDL120 truck tractor 3406 Cat motor; '03 Utility 53' trailer w/ Thermo King SB11 SR reefer; '98 Utility 53' trailer w/ Thermo King SB-111 reefer; '93 Great Dane trailer w/ Thermo King SB111SR reefer unit; Dorsey 48' alum trailer; Reitnouer 45' alum trailer air ride; '76 Freightliner w/ V8 Detroit & 22' steel grain body w/ tarp & My-D HanD unload auger; Chevy Cheyenne 3500 truck w/ flat bed & dump; several Thermo King working reefer units; Detroit 471 engine; Approx 15 box, flat bed, step deck, grain & reefer trailers w/ minor to major damage some with working reefers; lots & lots of truck engine & trans., reefer and trailer parts;



BEILER-CAMPBELL
AUCTION SERVICES



AY# 002026

www.beiler-campbellauctions.com • 888-209-6160

Auctioneers:

Harold Martin 717 738-4228 AA019488

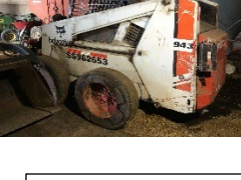
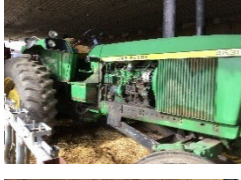
Noah Shirk 717-354-0192 AU005928

Christ Taylor 717-371-1915 AU 005421

Sellers: Jonathan & Anna Putt 717-951-1903

Attorney: Kling, Deibler & Glick 717-354-7700





Tractors & Farm Equipment; JD 7520 articulated cab tractor 8500 hours 1000 PTO 3 remotes; JD 4630 tractor shows 1862 hours 1000 shaft; IH 1066 cab tractor 5476 hours; IH 100 Hydro tractor shows 2347 hours; IH 826 tractor 2 shafts 7147 hours; IH 806 tractor 3000 hours; Case IH 1594 tractor; IH 1568 tractor hood & cab currently off; JD 1010 tractor gas WF; JD 1010 tractor diesel w/ loader; Farmall Cub w/ cultivator & corn planter attachments; AC G tractor; Bobcat 943 skid loader; Cat V50D propane forklift 3 stage mast SS 5K; JD 6600 combine; JD 913 grain head; JD 6-row corn head; Hesston 4910 4' x 4' sq baler w/ applicator; 6-row JD 7000 corn planter liquid fertilizer; Richardton 900 tandem axle side dump cart; JD 1209 Haybine; JD 1470 disc bine; Hesston 1091 haybine; JD 12' grain

drill; NI 325 2-row corn picker; NH 308 manure spreader; JD 5-bottom 1350-1450 variable width plow; Glenco 7-tooth chisel plow w/ discs; JD H1120 disk 20' w/ hyd. fold wings; JD 210 transport disc; IH 16' field cultivator w/ wings; NI 14' flail chopper; Brillion 14' cultipacker; Smoker 24' bale elevator; (2) bin wagons on JD & IH gears; NH grinder mixer; 3-Pt S-tine wheel rake; Farmhand wheel rake; 3PT fertilizer spreader; JD 4-row 3PT cultivator; 500 gal sprayer w/ Zimmerman 45' hyd fold boom; sprayer w/ high pressure pump & hand wand; 150 gal sprayer no boom; bale spear; 8' x 16' round bale wagon; Badger 184 manure pump; Everrain 111 irrigation hose reel w/ 900' of 3.25" hose; Capairi 6"x4" irrigation pump; Raingun 105C; 25 pcs 6" x 30' ring lock irrigation pipes; pipe trailer; 3-row Lannen cup wheel transplanter; Red Devil 8' snow blower 3PT; 5' wide 2-blade mower; HD Q-tach grapple bucket; (10) JD weights; 12.5 KW 3 phase generator w/ gas engine; AC 7G B crawler loader rebuilt motor; JD 855 track loader as is; Case 930 Wheatland tractor as is;

Greenhouse & Produce Related RJ rack system 24' & 30' covered plant trailers with racks & roll up tarps; Trane 200K BTU unit heaters; Old Mill automatic greenhouse flat seeder; Approx 40 cases Landmark # 288 plug trays & approx 10 cases # 102 plug trays all new; greenhouse fans & furnaces;

Metalworking Machinery; Southbend lathe; Miller & Airco stick & mig welders; metal cutting band saw; vertical bandsaw; Cincinnati Toolmaster mill; Swedish horizontal mill; surface grinder; drill press; toolboxes; telescopic forklift slip sheet att.;

Misc; approx 17 section pallet racks; Grady-White boat w/ inboard motor on Sea Lion trailer; Honda CB360 motorcycle 11K miles; 32" wide x 24' long HD elevator hyd. drive; JRB Q-tach payloader forks; 16' deck over tandem axle pintle hitch trailer w/ 7' ladder ramps; concrete mixer tank w/ pto drive hyd motor; several electric forklifts and pallet jacks some as is; approx 20 pcs 5" OD heavy wall oil pipes up to 30' long; 8' x 21' steel tank; Approx. 3 ton ear corn; feed bin w/ unload auger; 500 & 275 gal. fuel & oil tanks; (3) calf hutches; (4) 18.4-38 tractor tires; CI radiators; 12' high rolling trolley w/ (2) 2-ton chain hoists; air hose reel; engine hoist & stand; parts washer; several air compressors; 200 amp battery charger; Troybilt tiller; 24' alum ext ladder; step ladders; irrigation guns, fittings & parts; 150 gal poly tank; 17' alum. canoe; electric service wire; PTO shafts & parts; steel decking for concrete; (2) 16' farm gates; (24) wooden church pews 13' long; 40' sea container side damage; lots file cabinets, desks & chairs; 100's pallets; lots of steel pipes & angles;

Older, Vehicles & Parts/Repair/Scrap Vehicles; White Road Boss truck tractor; '01 Mack w/ roll off no trans; '99 Chevy 3500 diesel; GMC 35 w/ service body; Plymouth Voyager, Dodge Caravan & Ford Windstar mini vans; Ford Ranger XLT pickup; Ford Bronco; '01 Suzuki Vitara and possibly a few more.

Auctioneers Notes; Large amount of items. Everything must go. Lots unlisted. Probably selling simultaneously!

For more pictures go to www.beiler-campbellauctions.com or www.auctionzip.com or www.gotoauction.com



For more pictures go to: www.beiler-campbellauctions.com • www.auctionzip.com • www.GoToAuction.com

BEILER - CAMPBELL
AUCTION SERVICES



www.beiler-campbellauctions.com 1-888-209-6160

Auctioneers:

Harold Martin: 717-738-4228 AA#019488

Christ Taylor: 717-371-1915 AU#005421

Noah Shirk 717-354-0192 AU#005928

Seller: Jonathan & Anna Putt 717-951-1903

Attorney: Kling, Deibler & Glick 717-354-7700