

FLYNN FARMS INC EQUIPMENT DISPERSAL

Saturday, Feb 24th * 10am * Fruita, CO



Tractors & Loader: '05 JD 8320 FWA, 4,800hrs, radar capable, guidance ready, 18sp, 3pt, 3 hyd remotes, duals; '94 JD 7800 FWA, 8,000hrs, 19sp, 3pt, 3 hyd remotes, duals; '61 JD 4010, 4176 hrs since o.h., synchro, 3 pt; '68 JD 3020, 10,968hrs, reman. eng @ 5,200hrs, 3 pt; JD 644 B 4x4 loader, 3 yd bucket, hay forks, QA; '13 Bobcat Skidstr, S175, 1750hrs, w/ bucket and forks; JD Greenstar GPS, AMS 1800 display w/ auto trac activation, SS 3000 receiver.



Chopper & Swather: JD 5460 chopper, 7551 hrs, duradrum; hay p.u. head & 3 row corn head, newer style; '12 JD R-450 swather, 1350 eng hrs, 985 cutting hrs, 16' rotary head, steel conditioners; JD 3 row earlage corn head for 5460.



Hay Equipment: Hesston 4900 baler, 4x4, accumulator, 2017 updated crank, blower, & p.u. ; Vermeer R2300 twin rakes, hyd drive; '15 H&S double wheel rake, AR-12



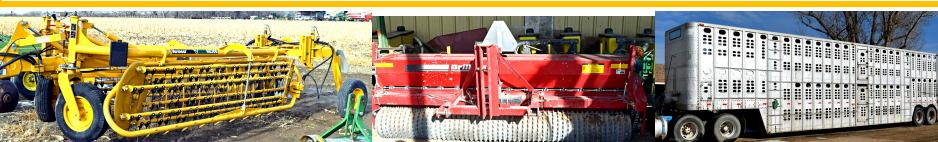
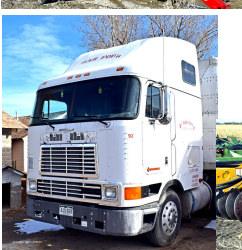
Trucks and Trailers: '06 Mack, 400 Mack eng, 13sp, 22' bed, silage racks; '89 Volvo 20' bed, silage racks, 400 Cummins, 7 sp; '92 IHC, cab over, N-14 Cummins, 13sp, new rad; '97 IHC 8200, N-14 Cummins, 10 sp, 20' Kuhn manure box w/ hyd slot gate, silage racks, triple beater; '79 GMC Brigader, 300 Cummins, 9sp, 18' flatbed; '94 IHC 8200, 350 Cummins, 9sp, G.N. hitch, single axle, sleeper; '88 IHC 8200, 350 Cummins, 9sp, 5th wheel, wet kit; '06 Chevy 1500, 2x4, auto, long box; '99 Chevy S-10, 5sp, 4x2; '89 Wilson cattle pot, 48'x102"; '06 Econoline tilt trailer, 24', 26 ton axles w/ pintle hitch; H.M. trailer for squeeze chute; '07 UTI 20' flatbed, BP, w/ two 5,000# axles.



Equipment: '05 JD 1710 12Rx30" vac planter, updated set for precision planting meters, liq fert, hyd fold; JD 7100 6Rx30" planter, finger p.u.; two-JD 400, 6 row rotary hoes, 3 pt; '14 Brillion seeder, 10 ft, near new; Degelman D57, 12' dozer w/ hyd tilt & angle; JD 7 shank ripper, 3pt; Big Ox 7 shank ripper; JD 4600 5x18" roll-over plow, spring trip; JD 4600 6x18" roll-over plow; JD 4x16" roll-over plow; '17 Roll-a-Cone 13 shank ditcher; Brillion WCLS 3003 25' mulcher, hyd fold; three- 7 shank ditchers, 3 pt; Eversman 2000 20' land plane, 3 pt, hyd fold; Wyle 45' boom pull type sprayer, Raven controls; Orthman 6 row cultivator; Orthman front 3 pt hitch; Daniser 3 pt post hole digger, 12" auger; JD 340 16ft offset disc, 24" discs; JD 24' field conditioner, 3 pt; Willman fert spreaders, 500 narrow trk; 8 ft tandem disc; JD Mx7 3pt rotary mower; JD 603 3pt rotary mower; Westfield 8" x51' auger; Westfield 7" x51' auger; two- Koehn cultivators; JD 16' harrow; Hesston 10 loaf stacker; 8 row markers



Misc: 8' Parma arena groomer, 3 pt; '06 Yamaha 400, 4x4 Kodiak 4-wheeler; '99 Honda 4-wheeler, TRX 450, 2x4; '03 Polaris 800 snowmobile, 153 track; JD LX279 riding mower, 48" deck; 2000 gal fuel tank; 500 gal fuel tank; lots of steel cable; galv guard rail; crowding alley; two-380/90 R 50 radial tires; Powder River calf cradle; clamp on duals; water tanks; hog panels; galv calf sheds; pickup rack; 65 checks for con. ditch; 66 - 1 1/2" tubes; 74 - 1 1/2" tubes, 72" long; 286- 1 1/2" tubes; 74- 3/4" tubes, 72" long; 277 - 1" x 60" tubes; 12- 10" surge valves; 4- 10" alfalfa valves; and much, much more!



MORE PHOTOS & INFORMATION AT:
WWW.NICHOLSAUCTIONEERS.COM

Terms: Cash, negotiable check, credit card (3% added to cc transactions, see website for details). Verbal terms and conditions as stated by the auctioneer supersede any other terms, online, printed, or otherwise. Auction conducted by Nichols Auctioneers.

Sale Manager is Shane Wilson.

Directions to Flynn Feedlot, Road 18, Fruita, CO: From I-70, take exit 26 in Grand Junction, go 3 mi west on Hwy 6-50. Turn N on 19 road for 6 miles. Turn west onto O road for 1 mile. N on 18 road for 1/4 mile. Look for signs.



facebook.com/NicholsAuctioneers



NICHOLS
Auctioneers

Note: Gary and Christie Flynn have sold their farm and are liquidating all farm equipment. This is a nice line up of well maintained equipment. Not many small items, be on time. Lunch will be available!

Shane Wilson 970-216-3488
John Nichols 719-740-1320
Lance Nichols 970-302-6185
Mike Nichols 719-350-0126