

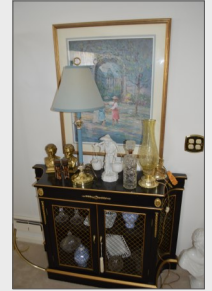
Real Estate - Antiques - Household Auction

Saturday April 3, 2021 @ 10:00AM

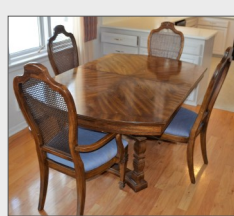
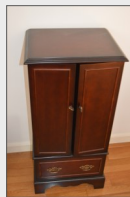
3439 Shakespeare Ln. Sylvania Twp.

Directions: Central Ave to Corey Rd, east on Chapel Dr to Shakespeare Ln

Real Estate offered @ 10:00AM followed by contents



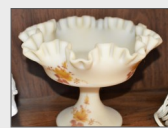
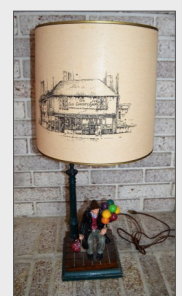
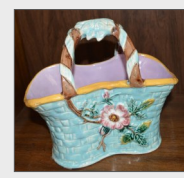
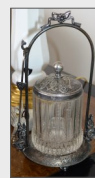
whalenauction.com



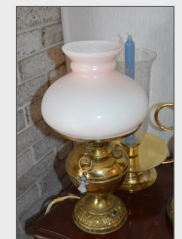
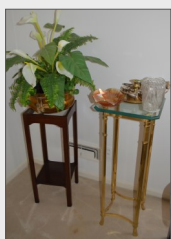
Furniture, Household: Kindel 4 pc. mahogany bedroom suite; kidney sofa; dining table; lighted curio cabinet; wrought iron table, chairs & lounge; jewelry chest; coffee & sofa tables; dresser; chest; nightstands; bookshelves; signed print; table & floor lamps; sterling spoons; comic books; **Glassware:** 25 pcs of Majolica including cake plate, basket, pitchers, plates, cream & sugar and more; Carnival glass; hand painted china; pressed & pattern glass; pickle castor; plus more.



Owner: Stuart E. Remley Trustee



Terms: Cash or check w/I.D., 3% processing fee on credit/debit cards. Lunch by Sandy's. **Order of sale:** Selling Real Estate at 10am followed by contents.



Auctioneers: John & Jason Whalen,
Mike Murry, George Bly & Jacob Ramos

419-875-6317, 419-337-7653

Information deemed reliable but not guaranteed

WHALEN **WHALEN**
REALTY & AUCTION, LTD.