

**AUCTION**  
Friday, Aug 7th at 10:00 am  
This glass collection sells at 12:00 Noon

## AUCTION

Friday, August 7th, 2020 at 10:00 am

This glass collection sells at 12:00 Noon

**LABINO ~ Baker ~ Lonsway ~ Lotton**

Whalen Auction Bldg, 8020 Manore Rd, Neapolis OH (*gps use Grand Rapids OH 43522*) Exit 63 off St Rt 24 to west on St Rt 64, towards Whitehouse, turn south on Finzel Rd to dead end into Neapolis-Waterville Rd, turn right (west to corner of Manore).



**501**

**Dominick Labino**  
1977, green ovoid  
vase, yellow-  
orange fronds, 6"



**502**

**Charles Lotton**  
1983, Multi Flora  
vase, red with  
pink flowers, 8"



**503 Baker O'Brien**  
2015 Triplicate vase,  
amber with dark  
feather pulled  
design, 6"

*The Late*  
**Joyce Henning Collection**  
of Bowling Green OH

**WHALEN**  
REALTY & AUCTION, LTD.

419-875-6317 Please call Mon-Fri 8am -4pm ~ Email [info@whalenauction.com](mailto:info@whalenauction.com)  
Auctioneers: John & Jason Whalen, Mike Murry, George Bly & Jacob Ramos  
Terms: Cash or check with I.D., No Buyer's Premium, 5% fee for credit cards,  
7.25% sales tax applies. Lunch by Sandy's., Open: week of auction from 8-3pm and  
Thursday August 6 from 6-8pm, open day of auction at 8:30am.  
[whalenauction.com](http://whalenauction.com)



**504 Dominick Labino**  
1980, pink aerial, gold veil, controlled air, 4.5"



**505 Vandermark 1979**  
gold iridized vase, large pink flowers, 4.5"



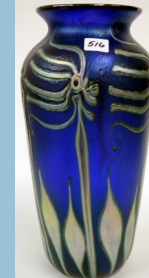
**506 Orient & Flume 1979**  
vase, amethyst iridescent feather, orig box 6"



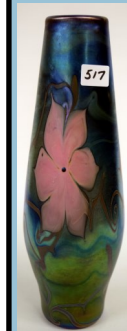
**514 Baker O'Brien 1986**  
triplicate vase, 3-sided pink vase, 3 flowers, 5"



**515 Charles Lotton 1979**  
Multi-Flora vase, gold iridescence, pink flowers 8.5"



**516 Lotton 1993**, dark blue vase, abstract flowers in silver, textured surface 11.5"



**517**  
Blue-Green iridized vase, large pink flowers 11"



**507 Dominick Labino**  
1981 vase, green pinched-pylled design, blue at top, 6.75"



**508 Charles Lotton**  
1994 blue Multi-Flora, vase white flowers 8.75"



**509 Dominick Labino**  
1977 aerial vase, light amber, ovoid shape,



**518 Charles Lotton**  
1983 vase, white pearlized, silvery feather design 5.5"



**519 Charles Lotton 1993**  
vase, pink-purple vase, green leaves & stems 7.5"



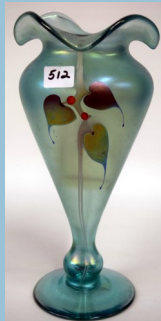
**520 Brian Lonsway**  
green vase 6.75", interior glass swirl pattern



**510 Choice of 4 paperweights**  
A-Orient & Flume 1980  
B-Orient & Flume 1980  
C-Yellow fronds, white center flower  
D-blue & green butterfly, faceted



**511 Baker O'Brien**  
1988 large vase, blue with grey feathering, 8"



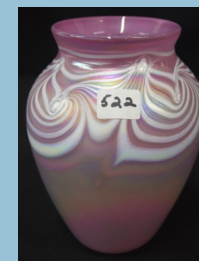
**512 Abelman**  
1982 footed vase, mint green, heart leaves 10"



**513 Orient & Flume**  
iridescent blue vase, Ocean Wave, 8.5", Designers S. Beyers, Bl Sillars



**521 Vandermark 85**, Jack in the Pulpit orange-white feather stem, 14"



**522 Roger Vines Studio**  
1984 pink vase, white feather pulled, The key ingredient is Mt St Helen's ash gathered after the 1980 eruption, 6"



**523 Lalique Studio**  
1982 purple vase, pulled feather design 11"