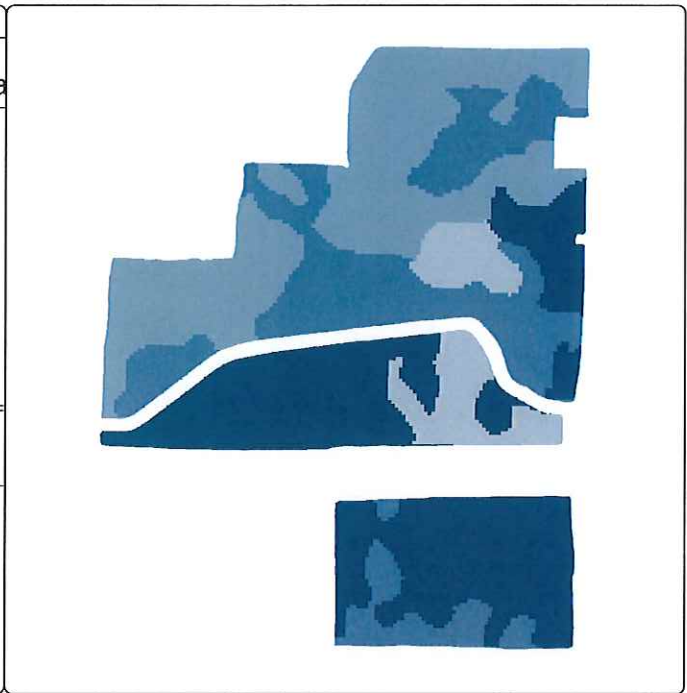
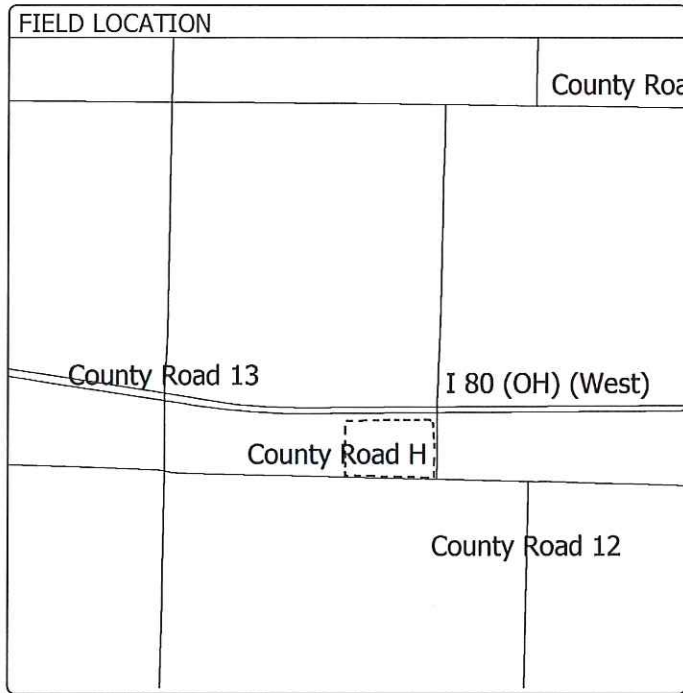


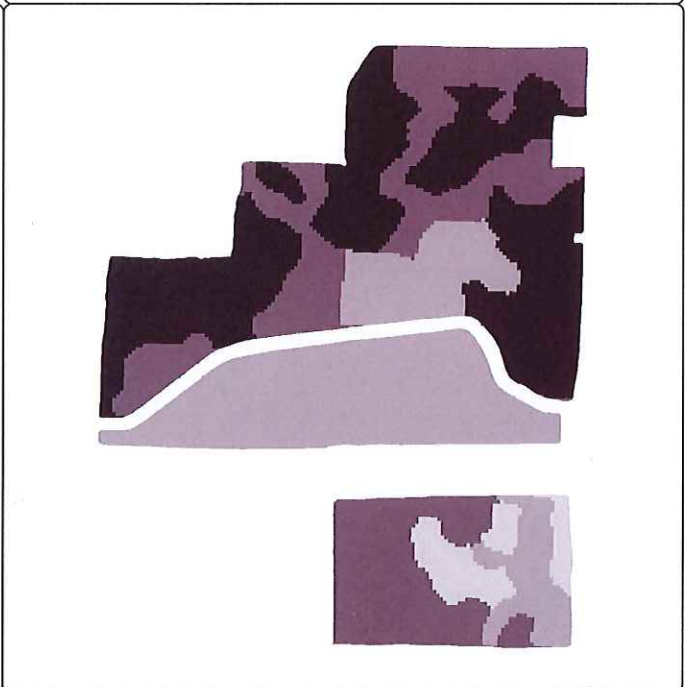
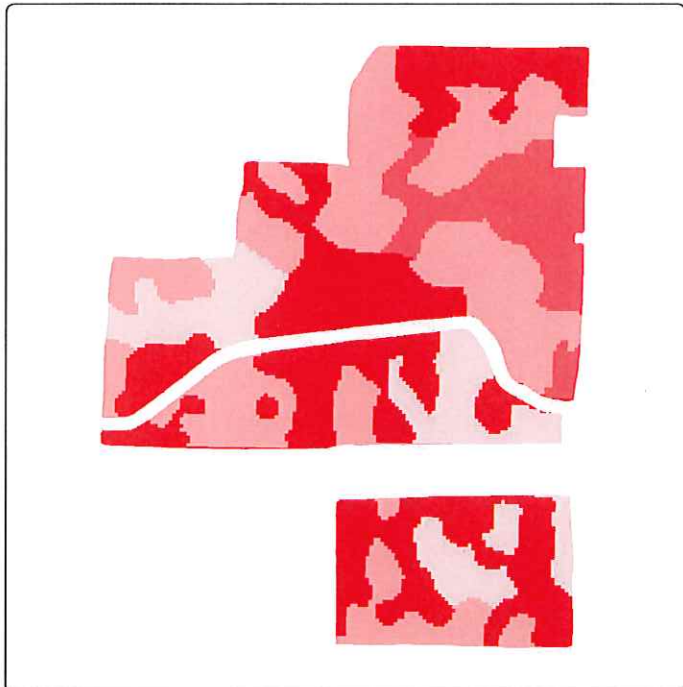
FERTILITY GUIDELINES

SOIL pH: 6.5 pH provides for the most nutrient availability for corn, soybeans, wheat
 6.9 pH provides for the most nutrient availability for alfalfa
 SOIL K: Potash Fertility Recommendations target the OPTIMAL range
 SOIL P1: Phosphorus Fertility Recommendations target the OPTIMAL range



Soil pH ((1))

Above 6.6	(43.42 ac - 35.9%)
6.3 - 6.6	(31.50 ac - 26.0%)
6.0 - 6.3	(35.87 ac - 29.6%)
5.7 - 6.0	(10.25 ac - 8.5%)
5.4 - 5.7	(0.00 ac - 0.0%)
5.1 - 5.4	(0.00 ac - 0.0%)
Below 5.1	(0.00 ac - 0.0%)



K Fertility Level ((1))

5-HIGH	(45.37 ac - 37.5%)
4	(12.70 ac - 10.5%)
3-OPTIMAL	(44.35 ac - 36.6%)
2	(18.62 ac - 15.4%)
1-LOW	(0.00 ac - 0.0%)

P1 Fertility Level ((1))

5-HIGH	(40.35 ac - 33.3%)
4	(36.50 ac - 30.2%)
3-OPTIMAL	(38.70 ac - 32.0%)
2	(5.48 ac - 4.5%)
1-LOW	(0.00 ac - 0.0%)