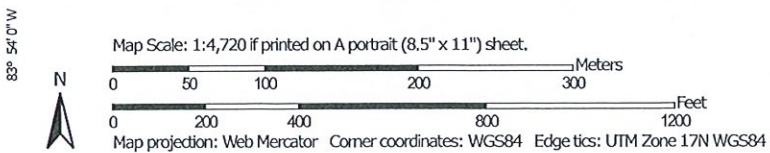
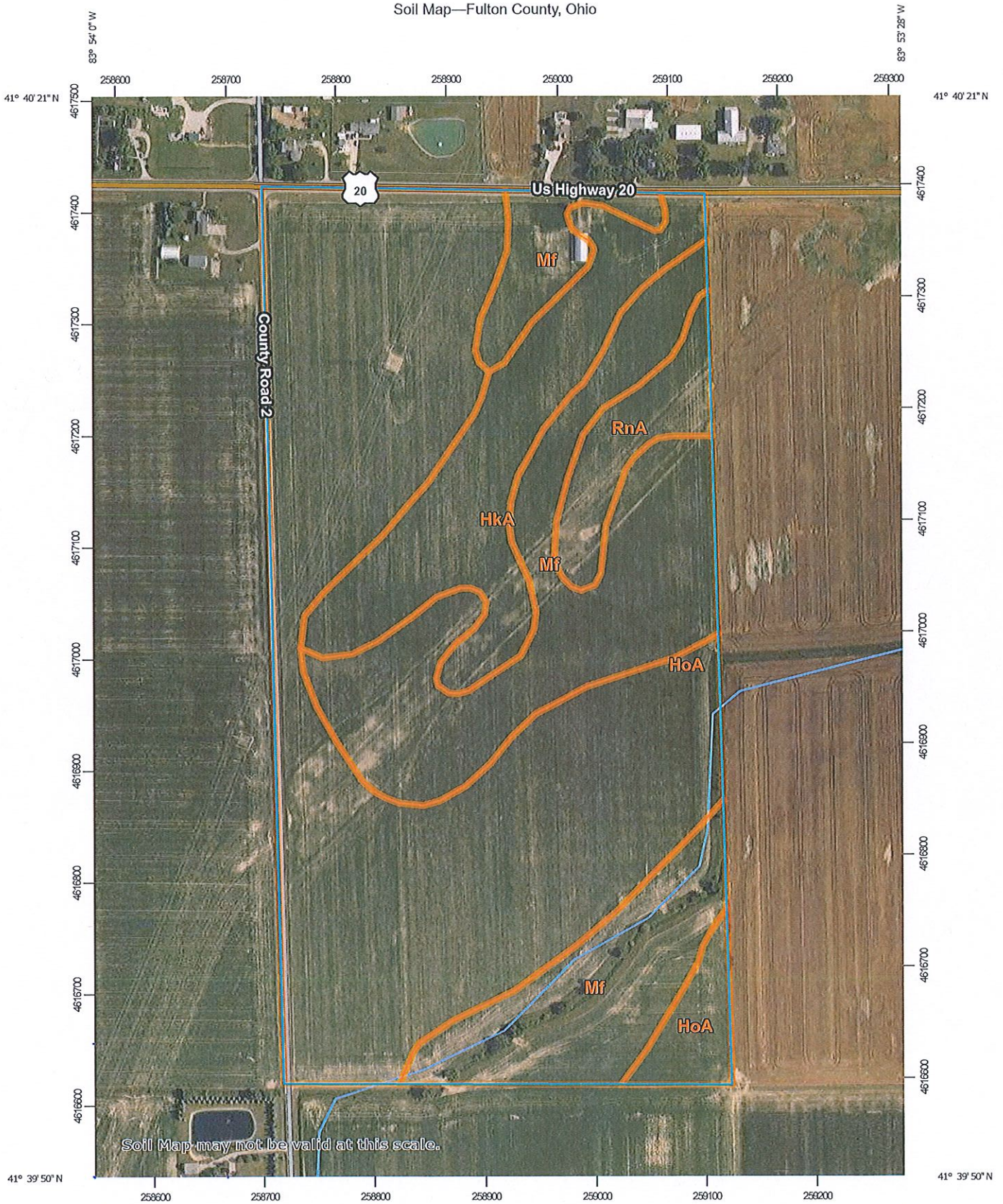


Soil Map—Fulton County, Ohio



Map Unit Legend

Map Unit Symbol	Map Unit Name	Acres in AOI	Percent of AOI
HkA	Haskins loam, 0 to 3 percent slopes	10.4	13.0%
HoA	Hoytville clay loam, 0 to 1 percent slopes	40.9	51.1%
Mf	Mermill loam	25.5	31.8%
RnA	Rimer loamy fine sand, 0 to 3 percent slopes	3.3	4.1%
Totals for Area of Interest		80.1	100.0%