



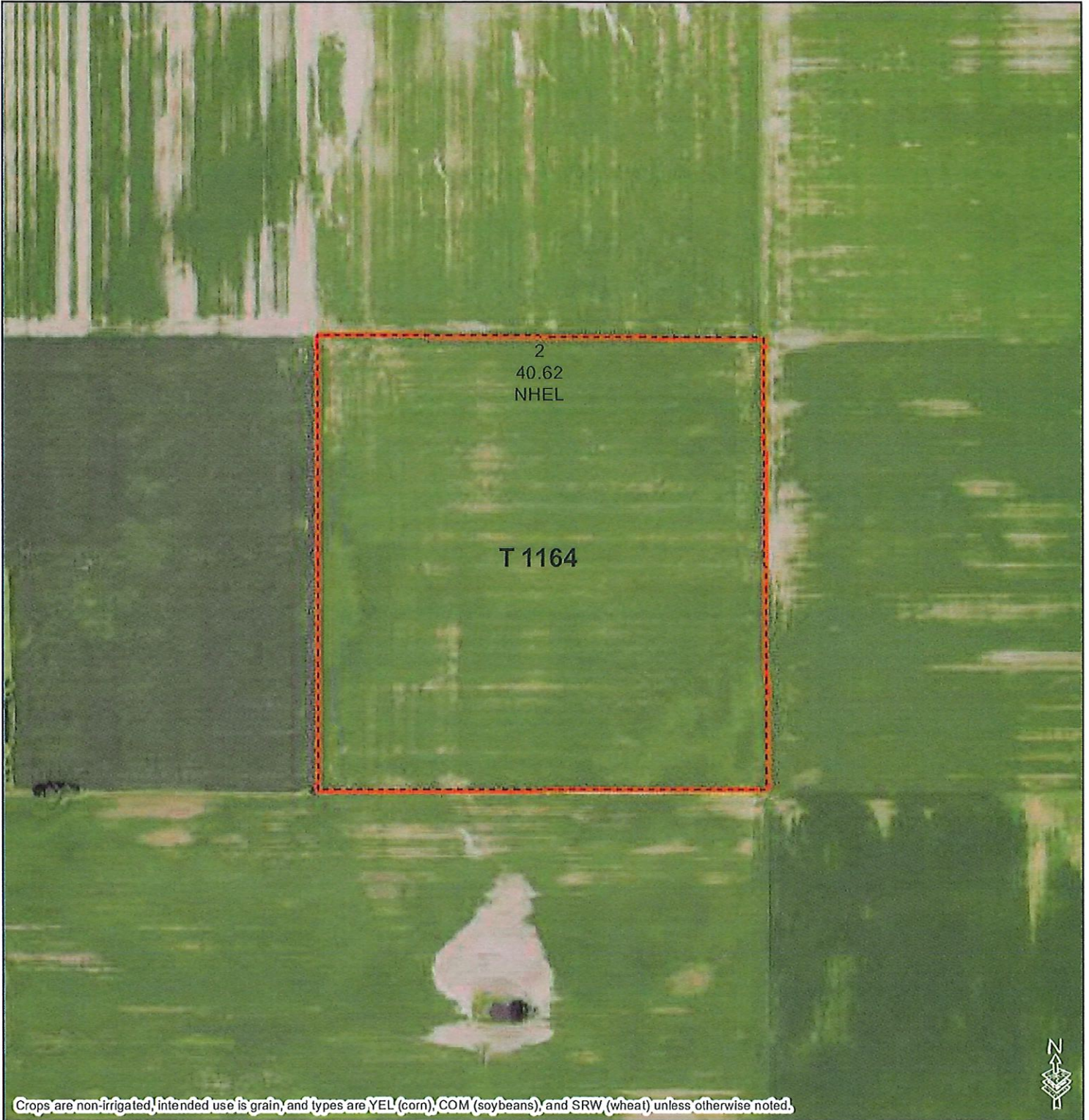
Wood County, Ohio

1616 E. Wooster St- PO Box 31
Bowling Green, OH 43402
419-352-5171 (p) 855-832-5971 (f)

2023 Program Year

Farm 12032

Tract 1164



Common Land Unit

1:4,800

- Non-Cropland
- CRP
- Cropland
- Tract Boundary

Wetland Determination Identifiers

- Restricted Use
- Limited Restrictions
- Exempt from Conservation
- Compliance Provisions

Map Created
November 07, 2022

Tract Cropland Total: 40.62 acres

NOTES:

United States Department of Agriculture (USDA) Farm Service Agency (FSA) maps are for FSA Program administration only. This map does not represent a legal survey or reflect actual ownership; rather it depicts the information provided directly from the producer and/or National Agricultural Imagery Program (NAIP) imagery. The producer accepts the data 'as is' and assumes all risks associated with its use. USDA-FSA assumes no responsibility for actual or consequential damage incurred as a result of any user's reliance on this data outside FSA Programs. Wetland identifiers do not represent the size, shape, or specific determination of the area. Refer to your original determination (CPA-026 and attached maps) for exact boundaries and determinations or contact USDA Natural Resources Conservation Service (NRCS).



Wood County, Ohio

1616 E. Wooster St- PO Box 31
Bowling Green, OH 43402
419-352-5171 (p) 855-832-5971 (f)

2023 Program Year

Farm 12032

Tract 8774



Crops are non-irrigated, intended use is grain, and types are YEL (corn), COM (soybeans), and SRW (wheat) unless otherwise noted.

Common Land Unit

1:4,800

- Non-Cropland
- CRP
- Cropland
- Tract Boundary

Wetland Determination Identifiers

- Restricted Use
- Limited Restrictions
- Exempt from Conservation
- Compliance Provisions

Map Created
November 07, 2022

Tract Cropland Total: 48.35 acres

NOTES:

United States Department of Agriculture (USDA) Farm Service Agency (FSA) maps are for FSA Program administration only. This map does not represent a legal survey or reflect actual ownership; rather it depicts the information provided directly from the producer and/or National Agricultural Imagery Program (NAIP) imagery. The producer accepts the data 'as is' and assumes all risks associated with its use. USDA-FSA assumes no responsibility for actual or consequential damage incurred as a result of any user's reliance on this data outside FSA Programs. Wetland identifiers do not represent the size, shape, or specific determination of the area. Refer to your original determination (CPA-026 and attached maps) for exact boundaries and determinations or contact USDA Natural Resources Conservation Service (NRCS).



Wood County, Ohio
 1616 E. Wooster St- PO Box 31
 Bowling Green, OH 43402
 419-352-5171 (p) 855-832-5971 (f)

2023 Program Year

Farm 12032
 Tract 8776



Crops are non-irrigated, intended use is grain, and types are YEL (corn), COM (soybeans), and SRW (wheat) unless otherwise noted.

Common Land Unit

1:4,800

- Non-Cropland
- CRP
- Cropland
- Tract Boundary

Wetland Determination Identifiers

- Restricted Use
- Limited Restrictions
- Exempt from Conservation Compliance Provisions

Map Created
 November 07, 2022

Tract Cropland Total: 39.99 acres

NOTES:

United States Department of Agriculture (USDA) Farm Service Agency (FSA) maps are for FSA Program administration only. This map does not represent a legal survey or reflect actual ownership; rather it depicts the information provided directly from the producer and/or National Agricultural Imagery Program (NAIP) imagery. The producer accepts the data 'as is' and assumes all risks associated with its use. USDA-FSA assumes no responsibility for actual or consequential damage incurred as a result of any user's reliance on this data outside FSA Programs. Wetland identifiers do not represent the size, shape, or specific determination of the area. Refer to your original determination (CPA-026 and attached maps) for exact boundaries and determinations or contact USDA Natural Resources Conservation Service (NRCS).