

Real Estate Farmland AUCTION

Providence Twp
Lucas County

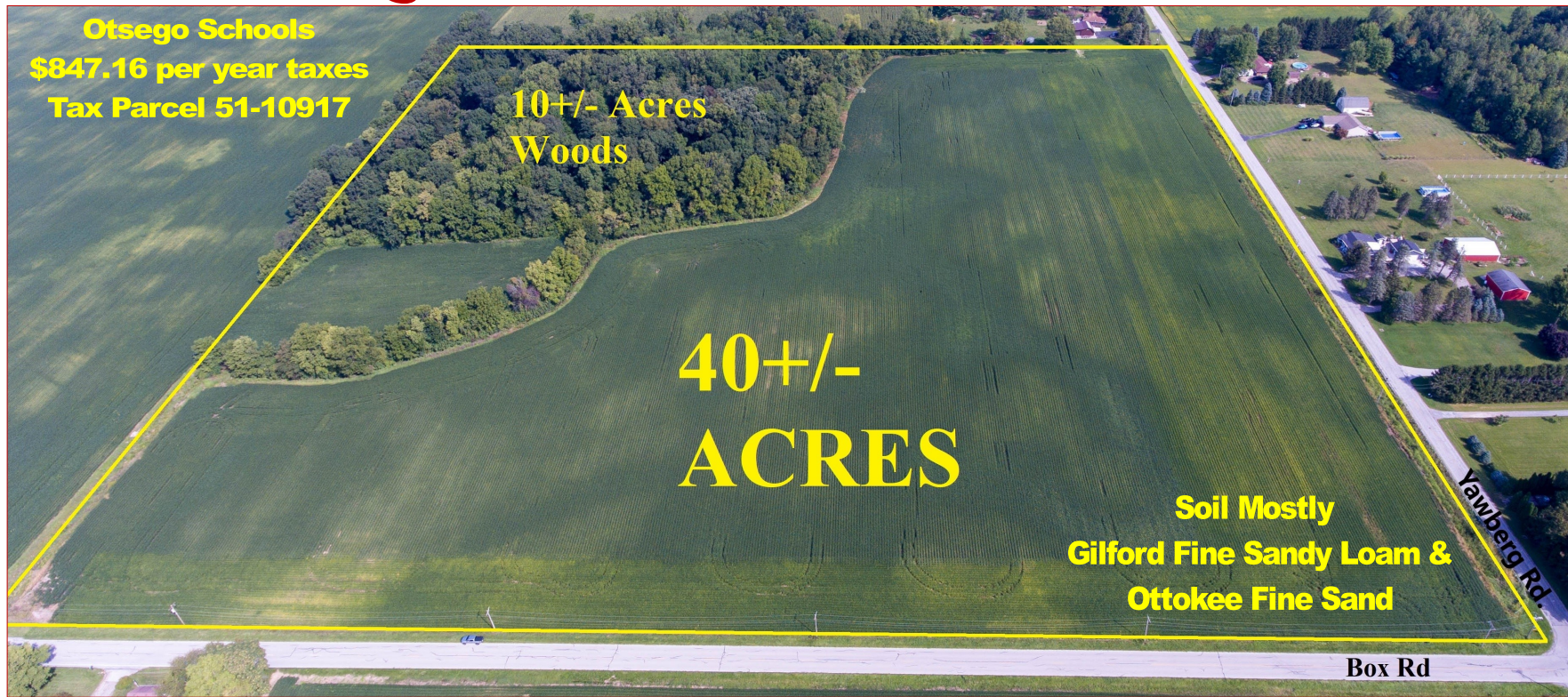
Auction held @

Whalen Realty & Auction Bldg.

8020 Manore Rd.

Gps Grand Rapids, OH 43522

Wednesday October 12, 2022 @ 10am



FARM LOCATED
12844 Box Rd.
Grand Rapids, OH 43522
(Corner of Yawberg)

WHALEN WHALEN
REALTY & AUCTION, LTD.
419-875-6317
whalenauction.com

Real Estate Farmland Auction

Wednesday, October 12, 2022 @ 10:00a.m.

WHALEN 
REALTY & AUCTION, LTD.
PO Box 550
Neapolis, OH 43547



whalenauction.com



Scan to
Learn More



Owner: Thomas M. Nehring



John Whalen
419-875-6317

Jason Whalen
419-265-2019

Mike Murry
419-262-6943

Terms: \$7,000.00 down in certified funds (non refundable) w/balance at closing. Closing held on or before December 15, 2022. Possession of tillable ground upon removal of fall crops and down payment of farming purpose only. Have finances ready, selling with immediate confirmation "as is where is." No Buyer's Premium. All information was derived from sources believed to be correct but not guaranteed. Dimensions are approximate. Buyers need to rely entirely on their own judgement and inspections of property records. Announcements made the day of the auction take precedence over printed materials.

AUCTIONEERS—John & Jason Whalen, Michael Murry - Office 419-875-6317, 419-337-7653