

DICK CHITTAM REALTY

112 W. Washington St.
Athens, AL 35611
JOHN STEWART AUCTION CO.

"Let Us Plan An Auction For You"



AUCTION

SATURDAY, OCTOBER 31st 10:00 A.M.

**22630 SANDLIN ROAD
ELKMONT, ALABAMA 35620
"Elkmont & I-65 EXIT"**

Terms: 10% down day of sale balance upon delivery of deed within 30 days on the Real Estate. A 10% buyers premium will added to determine the final sales price on the Real Estate. Announcements made the day of sale take precedence over any printed material. Property will be offered in Tracts, Combinations & As A Whole. 2020

Directions: In Athens, Al. Take I-65 North to Elkmont, Al. Take Exit 361 Turn Left on Sandlin Road and go Ω Mile to Property on Left. (Auction Signs)

DICK CHITTAM, Broker • JOHN STEWART, Broker/Auctioneer, S.L. #364—431-7504 • Phone: (256) 232-6666 • Toll Free: (800) 566-6605
Email: johnstewart@pclnet.net • www.auctionzip.com #9084 • www.gotoauction.com #3188

RETURN SERVICE REQUESTED

FIRST CLASS MAIL
AUTO
US POSTAGE PAID
PULASKI, TN
PERMIT NO. 955

POSTMASTER:
DATED MATERIAL
PLEASE DELIVER
PROMPTLY

AUCTION

DICK CHITTAM
REALTY
112 W. Washington St.
Athens, AL 35611

JOHN STEWART AUCTION CO.

"Let Us Plan An Auction For You"

Call Us For Information Phone:
(256) 232-6666

Toll Free: 1-800-566-6605

Visit Us On The Web:

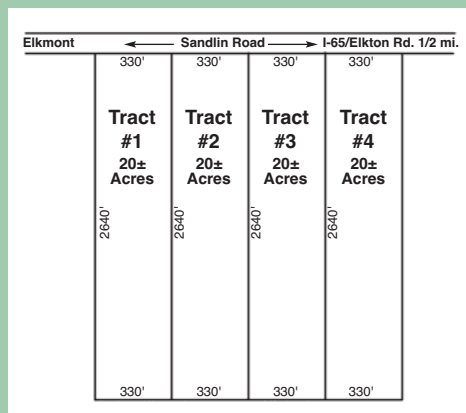
www.johnstewartauctions.com

email: johnstewart@pclnet.net

www.auctionzip.com #9084

www.gotoauction.com #3188

SATURDAY, OCTOBER 31st 10:00 A.M.
84± ACRES IN 4 TRACTS



**22630 SANDLIN ROAD
ELKMONT, ALABAMA 35620
"ELKMONT & I-65 EXIT"**

**EXCELLENT PROPERTY WITH
ROAD FRONTAGE OF SANDLIN ROAD**

DICK CHITTAM, Broker

JOHN STEWART, Broker/Auctioneer
S.L. #364 256-431-7504

JUSTIN CHITTAM, Auctioneer S.L. #2700

MICHAEL STEWART, Auctioneer S.L. #5473

This 80± Acres features All Wooded Tracts, Level With Power and Public Water Available. Abundance of Wildlife & Great Country Living. Excellent Development Property or Build Your Dream Home. Great Small-Farms, Close To Elkmont High School. This Property will be offered in Individual Tracts, Combinations of Tracts and As Whole. This Will Sell Unrestricted and No Zoning.