



# Full Report

Property Location : Not Available

**Owner:**

Vander Galien Sam JR  
 Vander Galien Sylvia  
 Po Box 150  
 Randolph, WI 53956

**Owner Occupied:**  
**Property Address:**

**County:** Sauk  
**Taxed by:** Town Of Greenfield  
**Taxkey #** 0180465-10000

**Assessments**

Assessment Year	Property Class	Land Assessment	Improvement Assessment	Total Assessment	Percent Of Change	Acres	Ratio
2017	Commercial	\$ 25,800		\$ 25,800	0.000-	0.920	1.065171731
2016	Commercial	\$ 25,800		\$ 25,800	0.000-	0.920	1.091746450
2015	Mercantile	\$ 25,800		\$ 25,800	0.000-	0.920	1.083979518
2014	Mercantile	\$ 25,800		\$ 25,800	0.000-	0.920	1.069693344
2013	Mercantile	\$ 25,800		\$ 25,800	0.000-	0.920	1.031287563
2012	Mercantile	\$ 25,800		\$ 25,800	0.000-	0.920	1.044482058
2011	Commercial	\$ 25,800		\$ 25,800	0.000-	0.920	1.017960743
2010	Commercial	\$ 25,800		\$ 25,800	0.000-	0.920	1.006356490
2009	Commercial	\$ 25,800		\$ 25,800	40.217↑	0.920	0.989251435

**Taxes**

Tax Year	Total Tax	First Dollar	Lottery Credit	Net Tax	Special Taxes	Special Assessment	Special Charges	Full Pay Amount	Ratio
2017	\$380.31			\$380.31				\$380.31	1.065171731
2016	\$373.40			\$373.40				\$373.40	1.091746450
2015	\$375.42			\$375.42				\$375.42	1.083979518
2014	\$387.56			\$387.56				\$387.56	1.069693344
2013	\$415.54			\$415.54				\$415.54	1.031287563
2012	\$401.79			\$401.79				\$401.79	1.044482058
2011								\$395.60	1.017960743
2010								\$399.75	1.006356490
2009								\$397.80	0.989251435

**Assessor**

<b>Building Square Feet :</b>	<b>Year Built :</b>	<b>Township :</b> 11N
<b>Bedrooms :</b>	<b>Year Remodeled :</b>	<b>Range :</b> 7E
<b>Full Baths :</b>	<b>Effective Year Built :</b>	<b>Section :</b> 15
<b>Half Baths :</b>	<b>Air Conditioning :</b>	<b>Quarter :</b>
<b>Total Rooms :</b>	<b>Fireplace :</b>	<b>Pool :</b>
<b>Number of Stories :</b>	<b>Number of Units :</b>	<b>Attic :</b>
<b>Building Type :</b>	<b>Basement :</b>	
<b>Exterior Wall :</b>	<b>Heat :</b>	
<b>Exterior Condition :</b>	<b>Garage :</b>	
<b>Land Use :</b>	<b>School District :</b> 0280 Baraboo	
<b>Zoning :</b>	<b>Historic Designation :</b>	

**Legal Description**

S 15-11-7 PRT Ne SW & NW Se = CSM #2216 0.919A

**Sales**

Information is supplied by third parties and has not been verified

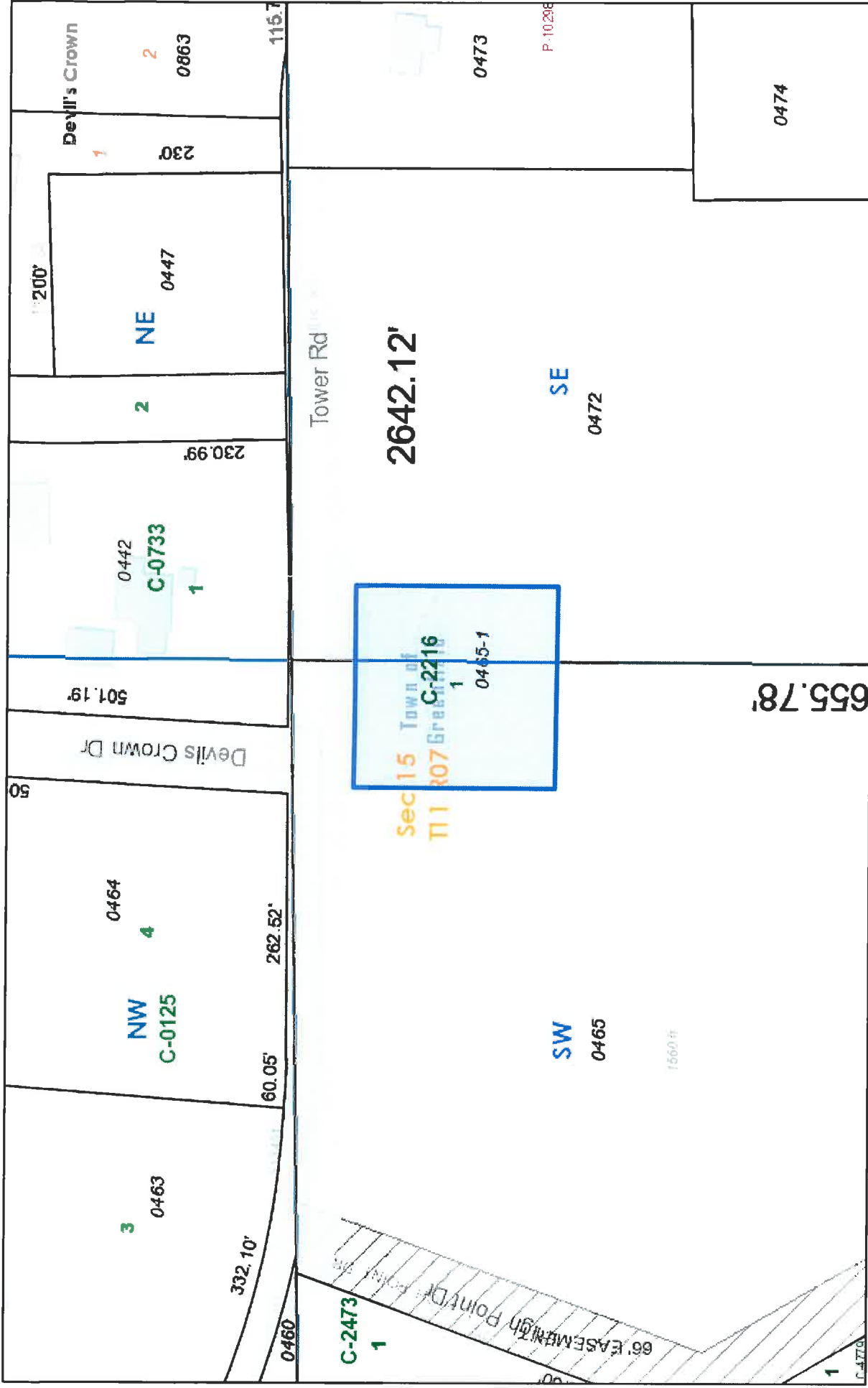
# Sauk County Land Information/GIS Web Map



Sources: Esri, HERE, Garmin, Intermap, increment P Corp., GEBCO, USGS, FOD, IGN, IGN, Esri, GeoBase, IGN, Kadaster NL, Ordnance Survey, Esri Japan, METI, Esri China (Hong Kong), (Switzerland) OpenStreetMap contributors, and the GIS User Community. Sauk County Land Information/GIS

FOR INFORMATIONAL PURPOSES ONLY. Sauk County does not attest to the accuracy of the data contained herein, and makes no warranty with respect to the correctness or validity, or the completeness or reliability, of the information contained in this map. The method and accuracy of the collection.





August 5, 2019

□ Tax Parcel Labels Search - TaxParcel

Survey Boundary Search - Boundary Type-Remaining

Condominium

PlatOfSurvey Point Search - Plat of Survey Point

CSM

Plat of Survey

Subdivision

Assessor Plat

Sources: Esri, HERE, Garmin, Intermap, increment P Corp., GEBCO, USGS.