

LIVE & ONLINE BIDDING — NO BUYERS PREMIUM

FARM RETIREMENT AUCTION

— Terry and Carol Seggebruch, Morris, IL (815) 325-3738 —

Monday, August 16, 2021 at 10:00 AM

Address: 3156 E Minooka Rd, Minooka, IL 60447

Directions: From the I-80/Brisbin Rd exit #116 in Morris, head North 1.5 miles to the corner of Brisbin Rd and Minooka Rd. Trailer parking available.

Tractors:

2011 Case IH Magnum 335 – MFWD, 2039 hrs, 335hp, CDC 8.9L 6-cyl diesel, duals all around, axle duals, 380/80R38 frt, 480/80R50 rear, fenders, deluxe cab with luxury leather seat, buddy seat, AFS Connect, 19-speed full power shift, 4 remotes, 3-pt, 1000 PTO, rear weights, 10-ftr suitcase weights. 2004 Case IH STX275 – 4WD, 4110 hrs, 275hp, CDC 8.3L 6-cyl diesel, 480/80R46 axle duals, AccuSteer, deluxe cab with luxury leather seat, buddy seat, 145" wheelbase, 5 remotes, 3-pt, 1000 PTO, RTK auto steer. 2001 Case IH STX440 – 5173 hrs, Quadtrac, 450hp, 16-speed full power shift, Cummins 14.9L 6-cyl diesel, 154" wheelbase, 30" tracks, FM-750 precision ag monitor, buddy seat, 4 remotes, bare back, 1000 PTO. 1990 John Deere 4955 – MFWD, 7638 hrs, 200hp, 7.6L 6-cyl diesel, 15-speed full power shift, 380/85R30 Frt, 480/80R42 Rear, axle mount duals, 20-ftr suitcase weights, 3 remotes, 1000 PTO. 1978 John Deere 8430 – 4WD, 9585 hrs, 194hp, 7.6L 6-cyl diesel, quad range, 480/80R38 axle duals, bareback, 1000 PTO, 3 remotes. 1974 John Deere 4430 – 10768 hrs (750 hrs on rebuild), wf, cah, quad range, 125hp, 18.4R38 tires, axle duals, 3-pt, 10-ftr suitcase weights, 2 remotes, 1000 PTO. 1974 John Deere 4430 – 11080 hrs, wf, cah, quad range, 125hp, 18.4R38 tires, axle duals, 3 remotes, 540/1000 PTO. 1969 John Deere 4020 – 6.6L 6-cyl diesel, 3899 hrs, wf, 16.9-R38 tires, 3-pt, no cab, 2 remotes, PTO. 1964 John Deere 4020 – 12319 hrs, wf, 6.6L 6-cyl diesel, powershift, 16.9-R38 radial tires, no cab, PTO. John Deere 148 Loader, Sure Lock Bucket and Forks.



Combine & Heads:

2011 Case IH 7120 Combine – 4WD, AFS Connect, 2853 engine hours, 2112 separator hours, 520/85R42 front duals, 540/65R30 rears, hyd fold-over bin extension, luxury leather seat, leather buddy seat. Case IH 2020 Platform, 35', 3" knife. Geringhoff Rota Disc Elite XL Corn Head, 8/30 Row, Headsight Insight row finder and header height control, corn reel. Unverferth HT36 Header Transport. Unverferth Road Runner HT Header Transport, 6-wheel, tandem axle w/tricycle front wheel.



Planters, Drills, Seed Shuttles:

Kinze 3650 Planter – 16/30 Row, Hyd Drive, Edge Vac Air, no-till coulters, trash coulters, Smart Box, 20/20 Seedsense w/ row shutoff, Clean Sweep row cleaners w/ pneumatic adjust, Seedsense liquid in-furrow fertilizer. Kinze 3650 Planter – 16/32 Row, bulk fill, no-till coulters, liquid fertilizer coulters, insecticide. Harvest International – 16/30 Row, strip till bar, front fold, no-till coulters, trash coulters, Harvest Intl S175-16 dry fert tank with Montag fan. John Deere 750 No-Till Drill, 15', fill auger & drag. Yetter Systems One Seed Jet II – 4-unit Seed Tender, B&G 11hp gas engine. Seed Shuttle – 4 bag w/fill auger, B&G 8hp engine. Seed Cart w/auger & gas engine drive, single axle.



Tillage Equipment:

John Deere 726 Soil Finisher, 33', new front blades w/scraper, walking tandems, 3-section, 3-bar spike harrow, rolling baskets. Case IH 730B Ecolo-Tiger Disc Ripper, 7-shank, auto reset, w/hyd fold disc-drag leveler and 3-bar spike harrow on the rear. M&W Earthmaster 1465 Disc Ripper, 5-shank, auto reset, 14', 4-bar spike harrow. McFarlane SPR-1030 Reel Seedbed Conditioner, 31', steel blade rolling baskets. Phoenix H14 Rolling Harrow, 52', hyd fold. John Deere 40' Progressive Fold-Around Rotary Hoe. IH 500 Disc, 16', notched coulters wheels, 24" blade, 11" spacing. IH 490 Disc, 21', hyd fold, 20" blade, 7.5" spacing, 3-bar spike harrow. DMI 4200 15-knife, no-till, anhydrous applicator.



Excavator, Forklift, Skidsteer & Attachments:

Caterpillar 277 Turbo Skid Steer, new tracks, 2461 hrs, cab. Bradco BC 72 Brush Cutter attachment for skid steer. Lowe 1650 Classic Auger Drive attachment for skid steer, 9", 12", 18" bits. Root Hog attachment for skid steer, wedge-shaped saw. Case 9010B Excavator, 24' track, hrs n/a, 3' bucket. Hyster H60XM Challenger Forklift, LP, 1411 hrs, 48" forks w/sideshift, 6000 lb capacity, pneu tires.



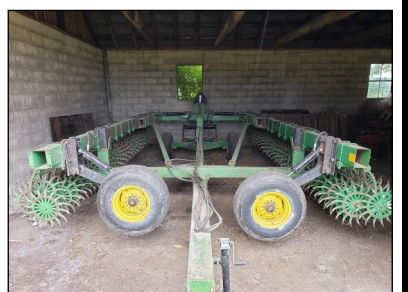
Work Trucks and Semi Truck Tractors:

2000 Sterling AT9500 Truck Tractor, white, 12.0L L-6 Diesel - CAT, 155k miles, 9955 eng hrs, twin screw, 8-spd Eaton Fuller trans, GVWR Class 8. 1994 Peterbilt 378 Truck Tractor, green, CAT 3406 eng, twin screw, 8-spd Eaton Fuller trans w/lo-lo, 401k miles, GVWR Class 8. 1997 Mack MR688P Cab Over Truck, Mack diesel engine, Allison auto trans, 422k miles, GVWR Class 8. 2004 GMC 3500 1-ton Service Truck, 6.0L V8 gas, auto, 157k miles, 2-door, 16" duals, GVWR Class 3. 1999 Ford F-450 Dump Truck, 71k miles, duals, 7.3L V8 diesel, wood box, 2-door, GVWR Class 4. 1979 IHC F1924 Grain Truck, red, 121k miles, 5-spd, tandem axle, gravel box, Salvage Title.



Trailers and Grain Carts:

Brent 1082 Grain Cart, scale, roll tarp, camera, 20' auger, 900/60R32 tires. Brent 770 Grain Cart, scale, roll tarp, camera, 14' auger, 24.5-32 tires. 2011 Timppte 33' Hopper Grain Trailer, never seen salt, spring ride, ag traps, shur-lok roll tarp. 2001 Jet 30' Hopper Grain Trailer, spring ride, shur-lok roll tarp. 2007 MAC 28' Aluminum Dump Trailer. 2001 East 24' Aluminum Dump Trailer w/tarp. Bobko 20 Steel Dump Trailer, black. 1985 Transport System Flatbed Trailer, 40', GVWR 75k lb, 35-ton closed, 25-ton extended. Martin Flatbed Trailer, 28'. 2011 Timppte Fertilizer Tender Trailer, tandem axle. 1992 Great Dane 40' Van Trailer, white. 1971 Great Dane 40' Van Trailer, Mdl 810T, silver. KillBros 350 Gravity Wagon on JD 1065 Gear. (3) older Gravity Wagons. 1989 Office Trailer, 30', no title.



Other Equipment:

Landscape Equip: Bushwacker 15' Flex-Wing Brush Cutter Mower; Woods HS106 Ditch Bank Mower, 6', 3-pt; John Deere 5' Rotary Mower, 3-pt, pto; Boom Mounted Hydraulic Tree Cutter, attaches to tractor or skidsteer; Northwest 15' Tiller, 3-pt, Belt-Drive; 6' Scraper Box, 3-pt; Bale Spear, 3-pt; Shulte Rock Picker, 5' grate. **Sprayers:** Hardi TR800 Sprayer, 800-gal, tandem axle, 50' boom; Hagie 250 Hi-Boy Sprayer, 60' boom, 4WD, 2770 hrs, Dickey John CCS100 control; Hi-Boy Trailer, 10'x16'; 1000-gal Water Tank on trailer; 1500-gal stainless steel bulk tank on frame; 500-gal Pull-Between Sprayer Tank; 200-gal Trailer Sprayer. **Fuel: Custom Fuel Trailer** – 625-gal & 95-gal tanks, tandem axle, no title; 1000-Gal Fuel Tank and (4) 500-gal Fuel Tanks. **Augers & Dryers:** Mayrath 10x72 Auger, swing-away hopper; Hutchinson 8x48 Auger, electric motor; Westfield 10x41 WR100-41 Auger; Hutchinson 6x12 Auger; Hutchinson 8" Air Blower, PTO, pull type; Feterl Mdl 85 Rotary Screen, 6', 220volt; (2) M&W Continuous Flow Dryer; CMS Continuous Flow Dryer. **Misc Equip:** Atlas Copco Portable Air Compressor Trailer, Gianesi Edelio mfg, 160psi; 80-gal Air Compressor, 4cyl; John Deere 90" 3-pt Snow Blower, 540 PTO; Western 10' Snow Plow, Mdl 62302; 10' V-Plow for HD Truck; 15+ Infrared Heaters, ceiling-mount, used; Abell-Howe 1/2-Ton Jib Crane; Utility Pole Trailer & Poles; (2) Detroit Diesel Engines, Type DW-LS-TT; 5th Wheel Dolly Trailer; Hydraulic Press; **Hydraulic Hose Machine.** **Older Equip:** Kewanee 9-shank Disc Chisel w/drag "Conser-Vator" 10", (2) 4-bar harrow; IH 844 – 4-38 Corn Head; IH 6-30 Cultivator, 3-pt; Pepin HD-506A 5-Section Drag Cart; John Deere 1000 Field Cultivator, 24' w/drag; John Deere 400 Rotary Hoe, 30', end transport; Big Ox 9-shank Ripper, converted into a pull type; Big Ox V07 Ripper, 3-pt, 7-shank, drag; New Holland Sickle Mower; IH-McCormick No.46 Square Baler; Vintage PTO-Drive Spreader, needs parts.

THERE WILL BE APPROXIMATELY TWO RACKS OF MISC TOOLS AND SHOP SUPPLIES.

Online Bidding Available on EquipmentFacts.com — No Buyers Premium

Richard A. Olson & Associates, Inc
531 W Bedford Rd, Morris IL 60450

Richard A. Olson IL License #440.000585
815-942-4266 (o) 815-258-3003 (c)

Erik C. Olson IL License #441.001909
815-942-4266 (o) 815-931-0699 (c)

Brian Bradley IL License #440.000505
Bradley's Auction Service, Streator IL



Notes: All items are being sold as is with no stated or implied warranty. Sale day announcements take precedence over printed material. Buyers are responsible for all items after sold. This is a **LIVE** auction with simulcast online bidding on equipmentfacts.com. **NO** Buyers Premium. SN/VIN info on website. This is a very clean, well-maintained line of equipment. This is the first of two auctions for Terry and Carol.

OVER 500 PHOTOS ON WEBSITE!

www.richardaolson.com

