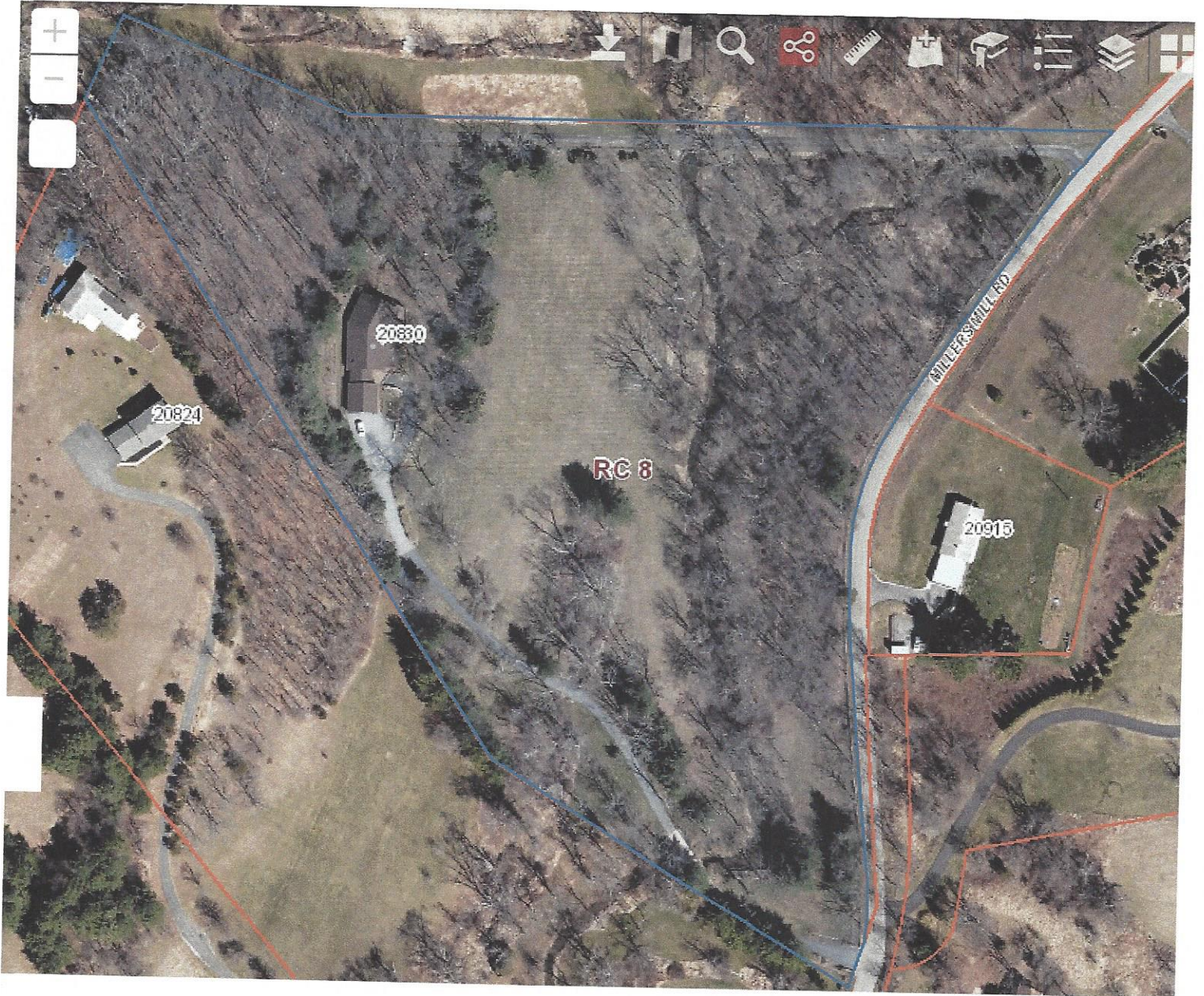




Baltimore County - My Neighborhood

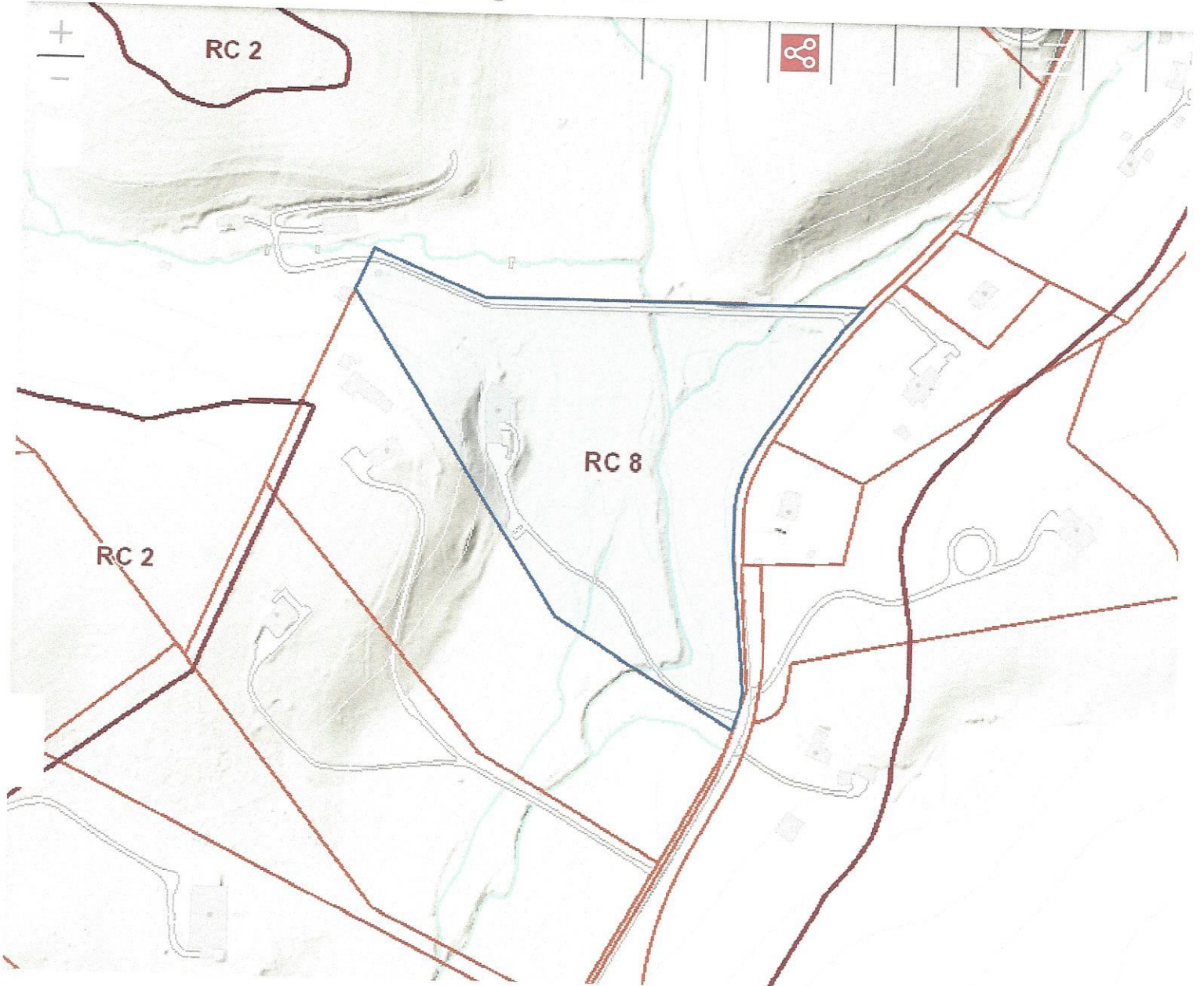


200ft

-76.709 39.699 Degrees

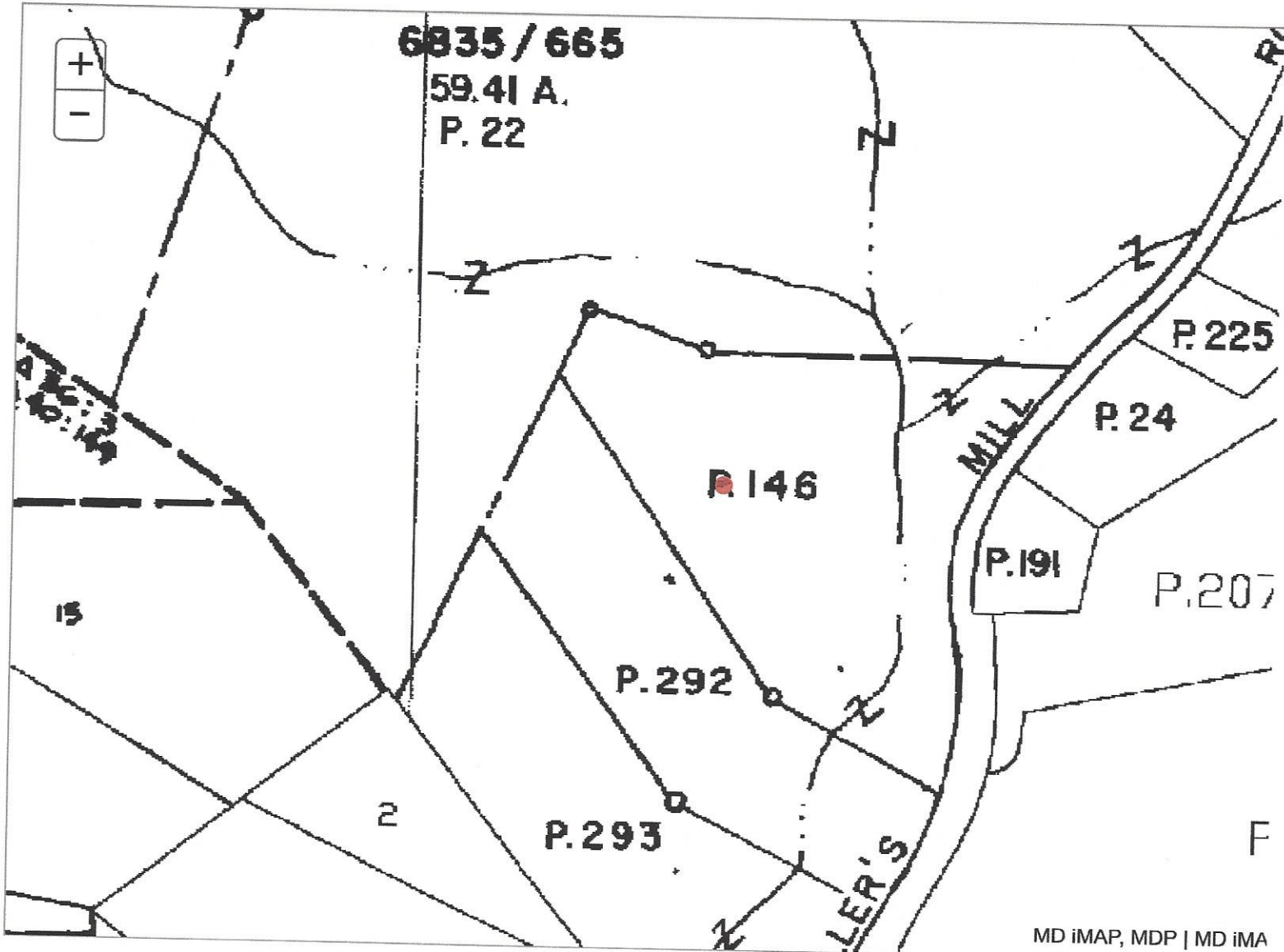


Baltimore County - My Neighborhood



300ft

-76.709 39.699 Degrees



MD iMAP, MDP | MD iMA

The information shown on this map has been compiled from deed descriptions and plats and is not a property survey. The map should not be used for legal descriptions. Users noting errors are urged to notify the Maryland Department of Planning Mapping, 301 W. Preston Street, Baltimore MD 21201.

If a plat for a property is needed, contact the local Land Records office where the property is located. Plats are also available online through the Maryland State Archives at www.plats.net (<http://www.plats.net>).

Property maps provided courtesy of the Maryland Department of Planning.

For more information on electronic mapping applications, visit the Maryland Department of Planning web site at <http://planning.maryland.gov/Pages/OurProducts/OurProducts.aspx> (<http://planning.maryland.gov/Pages/OurProducts/OurProducts.aspx>).