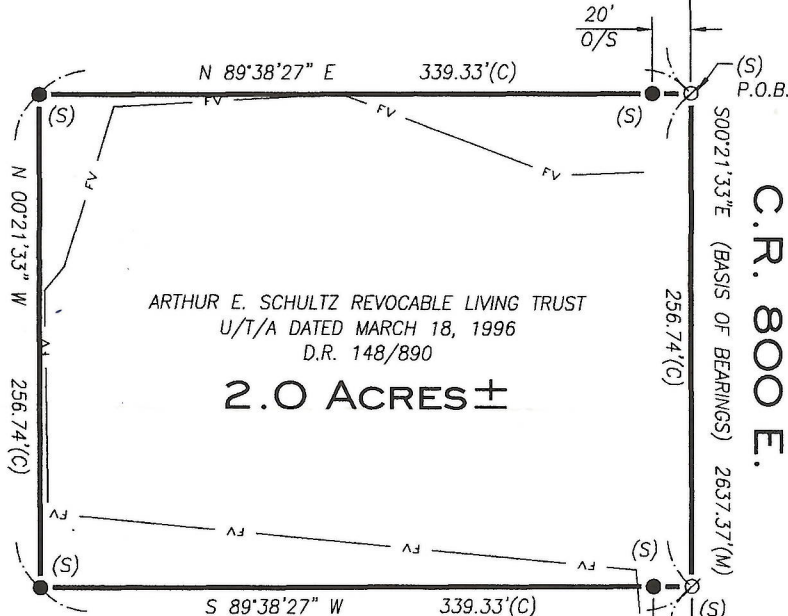


C.R. 200 S.

NE CORNER  
SEC.32-T33N-R1W  
(F) 10" MONUMENT  
P.O.C.

ARTHUR E. SCHULTZ REVOCABLE LIVING TRUST  
U/T/A DATED MARCH 18, 1996  
D.R. 148/890



ARTHUR E. SCHULTZ REVOCABLE LIVING TRUST  
U/T/A DATED MARCH 18, 1996  
D.R. 148/890

2.0 ACRES ±

ARTHUR E. SCHULTZ REVOCABLE LIVING TRUST  
U/T/A DATED MARCH 18, 1996  
D.R. 148/890

SE CORNER,  
NE 1/4, NE 1/4  
SEC.32-T33N-R1W  
(F) 3/4" IRON ROD

SE CORNER, NE 1/4  
SEC.32-T33N-R1W  
(F) IRON ROD W/  
OVAL HEAD

## SURVEYOR'S REPORT

THE PURPOSE OF THIS SURVEY WAS TO ESTABLISH A 2 ACRE PARCEL FROM A 160 ACRE, MORE OR LESS PARCEL OF LAND AS CONVEYED TO THE ARTHUR E. SCHULTZ REVOCABLE LIVING TRUST U/T/A DATED MARCH 18, 1996, DEED RECORD BOOK 148, PAGE 890.

THE EAST LINE WAS ESTABLISHED AS THE EAST LINE OF THE NORTHEAST QUARTER OF SECTION 32 FROM MONUMENTS FOUND AS RECORDED IN THE OFFICE OF THE STARKE COUNTY SURVEYOR.

THE SOUTH LINE WAS ESTABLISHED PERPENDICULAR TO THE EAST LINE IN CLOSE PROXIMITY TO RED FLAGS SET BY THE OWNER.

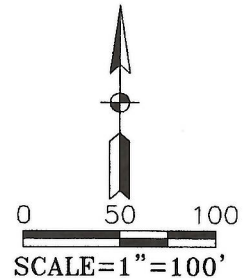
THE WEST LINE WAS ESTABLISHED PARALLEL TO THE EAST LINE AT THE WESTERLY RED FLAG SET BY THE OWNER.

THE NORTH LINE WAS ESTABLISHED PARALLEL TO THE SOUTH LINE AND PERPENDICULAR TO THE EAST LINE, AT A DISTANCE TO CREATE 2 ACRES, MORE OR LESS.

THE DEGREE OF UNCERTAINTY IS AS FOLLOWS:

RELATIVE POSITIONAL ACCURACY - 0.13 FEET PLUS 100 PPM (SUBURBAN SURVEY)

TITLE - NONE



## LEGEND

- D.R. = DEED RECORD-BOOK/PAGE
- (F) = FOUND
- (S) = SET
- (R) = RECORDED
- (P) = PLATTED
- (M) = MEASURED
- (C) = CALCULATED
- \* = DIMENSION NOT TO SCALE
- ⊗ = RAILROAD SPIKE
- = IRON ROD
- = IRON PIPE