



CRM LAND SURVEYING, LTD  
1321 KINNEYS LANE  
(740) 353-3475

PORTSMOUTH, OHIO 45662  
crmlandsurveying@aol.com

CONSTRUCTION LAYOUT  
PROPERTY DIVISION  
MAPPING

*Property Description*

*For*

**SUPER QUICK, INC**

**0.265 ACRES**

*Situated in Virginia Military District Survey Number 1455, Township of Morgan, County of Scioto, State of Ohio, and being a resurvey of Tract One of the GILLETTE HOLDINGS, LLC, as recorded in official record book 565, page 466, of the Scioto County Recorder's Office and being Scioto County Auditor Parcel Number 13-1091.000 and being more particularly described as follows:*

*Commencing, for reference, at the southeast right of way intersection of Ohio State Route 348 and Ohio State Route 104, said corner identified by a 6 inches diameter concrete Ohio State Highway Department marker know as Ohio State Route 348 centerline stationing 950+25, 130.00 feet right, said corner, also, being the northwest corner to the Chester Ward 1.16 acres tract as recorded in official record book 288, page 182, of the county recorder's office;*

*Thence, South 21 degrees 26 minutes 01 second East for a distance of 347.85 feet, with the east right of way of said Ohio State Route 104 and the west line of said Chester Ward, to the southwest corner of said Chester Ward's 1.16 acres tract and the northwest corner of the Chester Ward 0.023 acres tract as recorded in deed book 967, page 795, Exhibit "A", of the county recorder's office, said corner identified by a 5/8 inch rebar found 3 inches deep;*

*Thence, South 87 degrees 58 minutes 00 seconds East for a distance of 100.52 feet, leaving said right of way of Ohio State Route 104 with the north line of said Chester Ward's 0.023 acres tract, formerly a Temporary Construction Easement, to the northeast corner of said 0.023 acres tract and the northwest corner of the remainder of the Donald R. Ward First Tract as recorded in deed book 647, page 350, of the county recorder's office, said corner being identified by a 1 inch iron pipe with cap, found, and said corner being the **TRUE POINT OF BEGINNING**, of the herein described 0.265 acres tract;*

*Thence, North 76 degrees 15 minutes 26 seconds East for a distance of 43.61 feet, with the north line of said Donald Ward tract to the northeast corner to said Donald Ward's tract and in the west line of the Chester Ward 0.38 acres, Exhibit "B", as recorded in deed book 954, page 405, of the county recorder's office, said corner identified by a 1/2 inch MAG nail, found;*

*Thence, North 13 degrees 21 minutes 18 seconds West for a distance of 101.43 feet, with the west line of said Chester Ward's 0.38 acres tract, to a corner, said corner identified by a 1 inch MAG spike, set, from said corner a 1/2 inch MAG nail, found, bears South 09 degrees 27 minutes 50 seconds East for a distance of 5.81 feet;*

*Thence, North 08 degrees 21 minutes 15 seconds West for a distance of 43.59 feet, continuing with the west line of said Chester Ward's 0.38 tract, to a corner of the aforementioned Chester Ward 1.16 acres tract, said corner identified by a 1/2 inch MAG nail, found, said corner bears South 08 degrees 29 minutes 15 seconds East for a distance of 226.62 feet from the northeast corner of said 1.16 acres tract and the northwest corner to said 0.38 acres tract of said Chester Ward, said corner identified by a 5/8 inch rebar with cap stamped 7722;*

*Thence, South 76 degrees 33 minutes 34 seconds West for a distance of 84.15 feet, with a line of said Chester Ward's 1.16 acres tract, to a corner, said corner identified by a 1 inch iron pipe, found;*

*Thence, South 13 degrees 29 minutes 14 seconds East for a distance of 135.00 feet, with a line of said Chester Ward's 1.16 acres tract to the north line of aforementioned Chester Ward's 0.023 acres tract, said corner identified by a 1 inch MAG spike, set, from said corner a 1/2 inch MAG nail found bears North 53 degrees 26 minutes 59 seconds East for a distance of 0.59 feet;*



Thence, South 87 degrees 58 minutes 00 seconds East for a distance of 37.78 feet, with the north line of said Chester Ward's 0.023 acres tract, to the point of beginning and containing **0.265 ACRES**, more or less.

ALSO, an Easement for ingress and egress for the above-described tract and being more particularly described as follows:

Beginning at the TRUE POINT OF BEGINNING of the above described tract, said point being identified by a 1 inch iron pipe with cap, found;

Thence, North 76 degrees 15 minutes 26 seconds East for a distance of 43.61 feet, with the north line of said Donald Ward tract to the northeast corner to said Donald Ward's tract and in the west line of the Chester Ward 0.38 acres, Exhibit "B", as recorded in deed book 954, page 405, of the county recorder's office, said corner identified by a 1/2 inch MAG nail, found;

Thence, North 13 degrees 21 minutes 18 seconds West for a distance of 101.43 feet, with the west line of said Chester Ward's 0.38 acres tract, to a corner, said corner identified by a 1 inch MAG spike, set, from said corner a 1/2 inch MAG nail, found, bears South 09 degrees 27 minutes 50 seconds East for a distance of 5.81 feet;

Thence, North 08 degrees 21 minutes 15 seconds West for a distance of 43.59 feet, continuing with the west line of said Chester Ward's 0.38 tract, to a corner of the aforementioned Chester Ward 1.16 acres tract, said corner identified by a 1/2 inch MAG nail, found, said corner bears South 08 degrees 29 minutes 15 seconds East for a distance of 226.62 feet from the northeast corner of said 1.16 acres tract and the northwest corner to said 0.38 acres tract of said Chester Ward, said corner identified by a 5/8 inch rebar with cap stamped 7722;

Thence, North 76 degrees 32 minutes 25 seconds East for a distance of 20.08 feet, leaving said above described tract with a line through said Chester Ward's 0.38 acres tract, to the northeast corner of said easement, said corner being unmarked, from said corner a 1/2 inch MAG nail, found, bears South 31 degrees 39 minutes 07 seconds West for a distance of 0.15 feet;

Thence, South 08 degrees 21 minutes 15 seconds East for a distance of 44.47 feet, continuing through said Chester Ward's 0.38 acres tract, to a corner, said corner identified by a 1/2 inch MAG nail set, from said corner a 1/2 inch Mag nail, found, bears South 07 degrees 24 minutes 43 seconds East for a distance of 5.89 feet;

Thence, South 13 degrees 21 minutes 15 seconds East for a distance of 128.58 feet, continuing through said Chester Ward's 0.38 acres tract, to the south line of said 0.38 acres tract and in the north right of way line of Old State Route 348, 30 feet right of way, said corner identified by a 1/2 inch MAG nail, set, from said corner a 1/2 inch MAG nail, found, bears South 01 degree 17 minutes 14 seconds East for a distance of 1.82 feet;

Thence, North 88 degrees 09 minutes 15 seconds West for a distance of 68.67 feet, with the south line of said 0.38 acres tract of Chester Ward, with the south line of the aforementioned Donald R. Ward tract, and with the said north right of way of Old State Route 348, to the southwest corner to said Donald R. Ward tract and the southeast corner of the aforementioned 0.023 acres tract of said Chester Ward, said corner identified by a 1/2 inch MAG nail, set, from said corner a 1/2 inch MAG nail, found, bears South 16 degrees 38 minutes 14 seconds West for a distance of 1.30 feet,

Thence, North 01 degree 57 minutes 29 seconds East for a distance of 10.00 feet, leaving said right of way of Old State Route 348 and with the line between said Donald R. Ward tract and said Chester Ward's 0.023 acres tract, to the point of beginning.

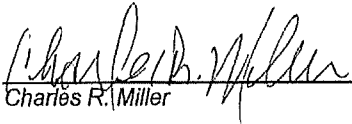
SCE APPROVED

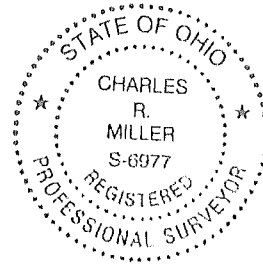


The basis of the bearings is Ohio State Plane Coordinate System (Ohio South Zone), North American Datum, 1983.

Together with and subject to easements, covenants, and restrictions of record.

The above description was prepared by Charles R. Miller, Ohio Registered Land Surveyor Number 6977, in October of 2021, from a field survey dates September 23 thru October 4, 2021, as show on the attached Plat of Survey, CRM Land Surveying, LTD, drawing number 210923, attached hereto or on file with the Scioto County Recorder's Office and/or Scioto County Engineer's Office, courthouse, and made a part of this description.

  
Charles R. Miller 10/8/21  
date



NOT SUBJECT TO  
Planning Commission  
Approval  
Angie Malone 10/8/21

APPROVED FOR TRANSFER  
SCIOTO COUNTY ENGINEER  
Sam Salyer

2021.10.08 10:57:19 -04'00'



0 60 120 180

**BASIS OF BEARING**

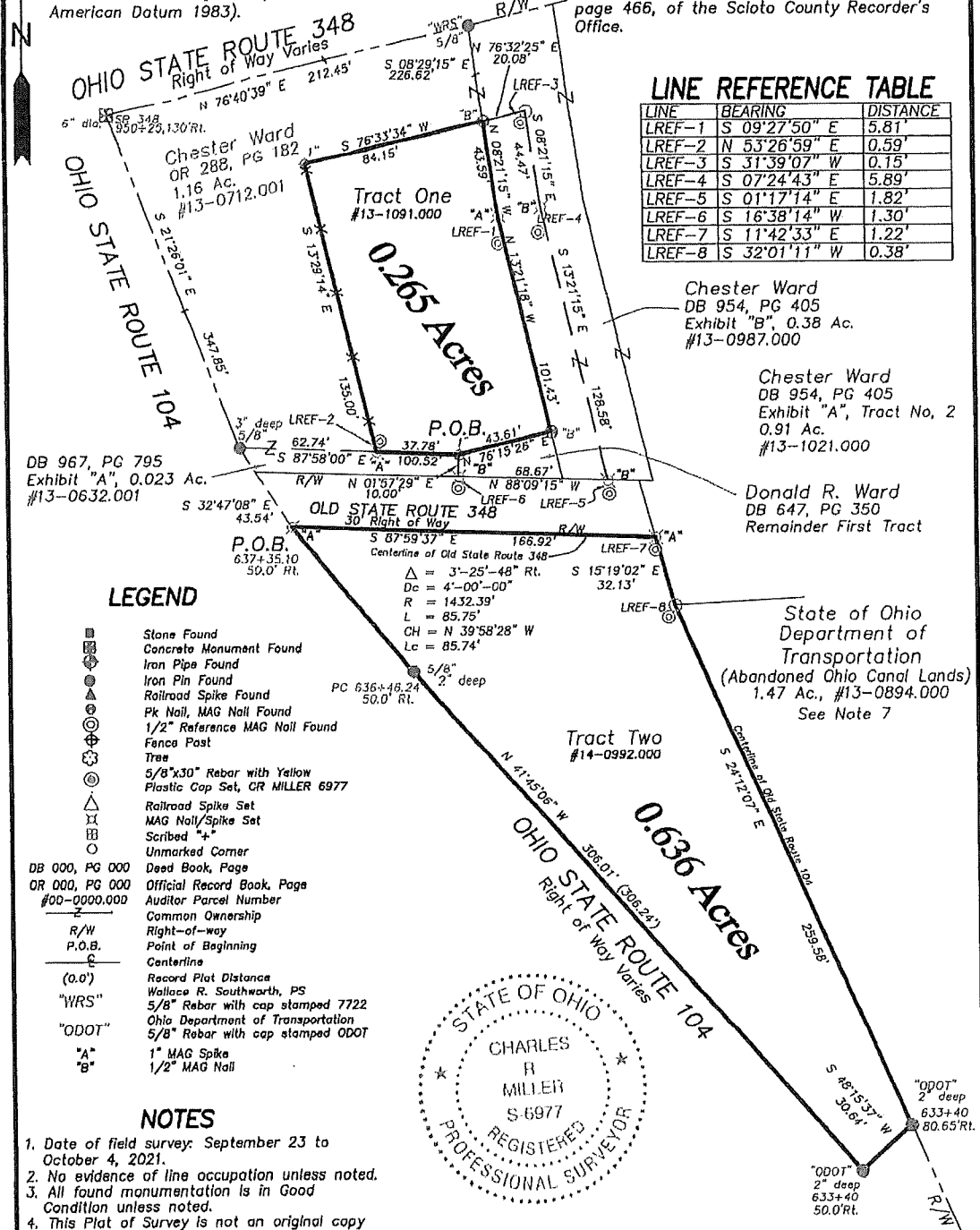
The basis of the bearings shown is Ohio State Plane Coordinate System (Ohio South Zone, North American Datum 1983).

**PLAT DESCRIPTION**

Situate in Virginia Military District Survey Number 1455, Township of Morgan, County of Scioto, State of Ohio, and being a resurvey of Tract One and Two of the GILLETTE HOLDINGS, LLC, as recorded in official record book 565, page 466, of the Scioto County Recorder's Office.

**LINE REFERENCE TABLE**

LINE	BEARING	DISTANCE
LREF-1	S 09°27'50" E	5.81'
LREF-2	N 53°26'59" E	0.59'
LREF-3	S 31°39'07" W	0.15'
LREF-4	S 07°24'43" E	5.89'
LREF-5	S 01°17'14" E	1.82'
LREF-6	S 16°38'14" W	1.30'
LREF-7	S 11°42'33" E	1.22'
LREF-8	S 32°01'11" W	0.38'

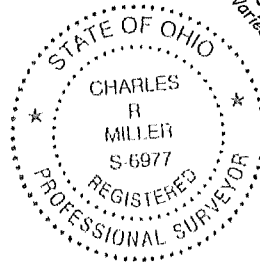


**LEGEND**

- Stone Found
- Concrete Monument Found
- Iron Pipe Found
- Iron Pin Found
- Railroad Spike Found
- Pk Nail, MAG Nail Found
- 1/2" Reference MAG Nail Found
- Fence Post
- Tree
- 5/8"x30" Rebar with Yellow Plastic Cap Set, CR MILLER 6977
- Railroad Spike Set
- MAG Nail/Spike Set
- Scribed "+"
- Unmarked Corner
- DB 000, PG 000 Deed Book, Page
- OR 000, PG 000 Official Record Book, Page
- #00-0000.000 Auditor Parcel Number
- Common Ownership
- R/W Right-of-way
- P.O.B. Point of Beginning
- Centerline
- (0.0') Record Plat Distance
- "WRS" Wallace R. Southworth, PS
- "ODOT" Ohio Department of Transportation
- "A" 1" MAG Spike
- "B" 1/2" MAG Nail

**NOTES**

1. Date of field survey: September 23 to October 4, 2021.
2. No evidence of line occupation unless noted.
3. All found monumentation is in Good Condition unless noted.
4. This Plat of Survey is not an original copy if the signature of the surveyor is not in blue ink and the seal is not in red ink.
5. It is hereby understood that the signing surveyor is not responsible for lost or obliterated corner or reference markers after the date shown hereon the Plat of Survey.
6. Do not revise manually, any manual revisions may void any and all certifications.
7. See Right of Way Plan SCI-348-18.04, Sheet 9 & 5, tract number 273B-WD.



*Charles R. Miller*  
Charles R. Miller, R. L. S. No. 6977

SCE APPROVED

**REFERENCE SURVEY'S**

- Ohio Department of Transportation 7/23/1969
- Lowell E. Burns, PS #4774, 7/26/1973
- Loren R. Purdorn, PS #6067, 2/25/1983
- Wallace R. Southworth, PS #7722, 5/1998
- Gilbert H. Smith, PS #5888, 6/1995

**CRM LAND SURVEYING, LTD**  
CONSTRUCTION LAYOUT-MAPPING-PROPERTY DIVISION  
1321 Kinneys Lane, Portsmouth, Ohio 45662  
740/353-3475 crmlandsurveying@aol.com

Plat of Survey FOR <b>SUPER QUICK INC.</b>		
Scale: 1"=100'	Drawing Number: <b>210923</b>	Revision: 0
Date: 10/6/2021	Drawn By: CRM	Plotted: 10/8/2021
Job File: 2021/210923/210923.DWG		