

5825 Weckerly Road, Whitehouse, Ohio 43571

Office: 419-865-1224 | Toll Free: 877-462-7673

Online at www.PamelaRoseAuction.com

Pamela Rose, REALTOR®, Auctioneer, AARE, CAI

CONTENTS AND REAL ESTATE AT AUCTION - LIVE ONSITE -

HARD TO FIND BRICK 3 BED HOME WITH FINISHED BASEMENT

5933 HIGHLAND VIEW DRIVE, SYLVANIA, OHIO 43560

TUESDAY, NOVEMBER 27, 2018

CONTENTS AT 2:00 PM AND REAL ESTATE AT 5:15 PM

CONTENT PREVIEW AT 1:00 PM AND REAL ESTATE AT 4:00 PM



CONTENT TERMS, PAYMENT, AND CONDITIONS: 10% Buyer's Premium. Cash, Check, MasterCard, American Express, Discover, or Visa. Full payment is due the day of the auction. Immediate removal at conclusion of auction. All items will be sold "As Is." Buyers shall rely entirely on their own information, judgment, and inspection of property and record. Any other terms or conditions will be announced the day of the auction and will take precedence over printed matter. Removal: Day of Auction.

REAL ESTATE TERMS & CONDITIONS: \$5,000 Deposit must be presented at time of registration for auction in form of cashier's check or personal check made payable to Greater Metropolitan Title. Balance due at closing on or before 35 Days of Auction. If registrant is last bidder, the check will be deposited into Greater Metropolitan Title's escrow account and credited to Buyer at closing. If Buyer fails to close per terms of contract, the deposit is non-refundable. A 10% Buyers Premium will be added to the last bid to establish the final contract price. Seller will furnish a guaranteed certificate of title at closing at title company. Taxes pro-rated. All information in this brochure was derived from sources believed correct, but is not guaranteed. All property dimensions are only approximations. Buyers shall rely entirely on their own information, judgment, and inspection of property and record. Buyer may bring a home inspector to inspect the property during the preview time. Auctioneer and assistants are seller's agent. Auction will be conducted, rain or shine. Any other terms or conditions will be announced the day of the auction and will take precedence over printed matter. **Privacy Policy and User Agreement:** To view our complete Privacy Policy and User Agreement, please visit our website at www.PamelaRoseAuction.com.

©2018 Pamela Rose Auction Company, LLC

STAY CONNECTED: 



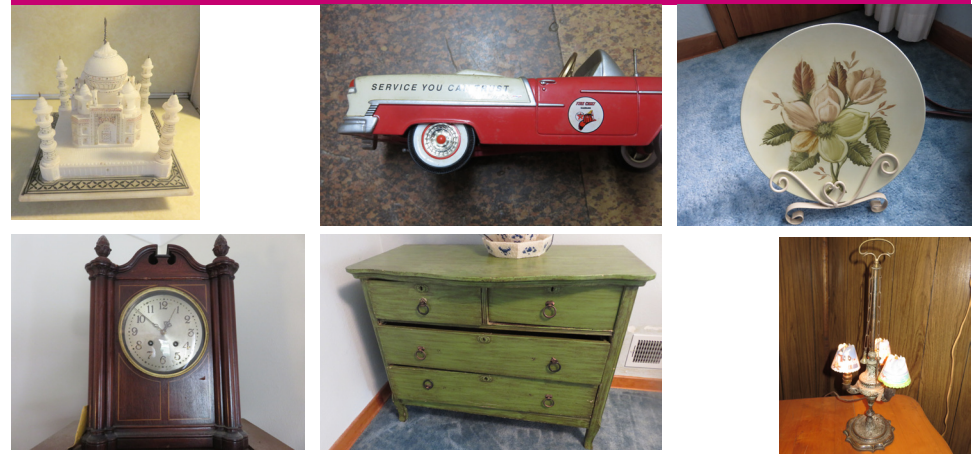
Serving The Auction
 Industry For 25 Years



CONTENTS AND REAL ESTATE AT AUCTION



**5933 HIGHLAND VIEW DRIVE
 SYLVANIA, OHIO 43560**



**TUESDAY, NOVEMBER 27, 2018
 CONTENTS AT 2:00 PM AND REAL ESTATE AT 5:15 PM**

CONTENT AUCTION AT 2:00 PM

Preview and Registration
Begins at 1:00 pm



(2) Twin Beds
12X Busch Binoculars with Leather Straps and Case
Amber Glass
Amgorter Painting
Antique Books
Antique Dresser
Antique School Desk
Assorted Glassware
Assorted Prints
Barbie's (Some New in Box)
Bookcase with Glass Doors
Books
Box Brass
BP Remote Controlled Tanker Truck
Brad Keeler Ceramic Cocktails
Brass Heat Lamp
Brass Lamps
Bunsen Warmer
Card Table
Cedar Chest
Cherrubs
Chiming Clock
China
Christmas Decorations
Christmas Lights
Classic Figurines - Made in Italy
Coffee Pot
Coffee Table
Cordon Blue Dish Set
Craven Décor Plate
Curio Cabinet
Dark Wood China Cabinet
Dark Wood Dining Tables with (2) Leaves and Table Pad
Dietz RR Lamp
Dolls
Drip Edge - McCoy
Drop Leaf Table
Easter Decorations
Eleanor Gutman Framed Sketch
Elvis Doll (New in Box)

Embroidered Music Chair
Embroidered Screen
Embroidered Stool
Enamel Coffee Pot
Fiber Optic Snowman
Figurines
Folding Tables
Foo Dogs (Ming Dynasty)
Ford's WB Padlock
Frosted Angel Lamp
Full Sized Bedroom Suite
Garden / Yard Tools
Goldrim Plates
Hole Punch (Marvel)
Holiday Lighthouse
House and Brass Carriage (Metlox & Co)
Hurricane Glass Lamp - Rayo
Iron
Knives
Lamps
Lantern - Red
Letter Openers
Lionel Train Clock
Little Boy Blue Picture
Locomotive - Battery Operated
Magnavox Stereo
Master Crafters Clock (from the 50's)
Monopoly
P.I.C. 30 x 30 Monocular
Painted Metal Brass Vase
Paper Weight
Peacock
Pin Cushion
Pink Depression
Pitcher Collection
Pole Lamp
Porcelain Dolls
Remote Controlled Dog
Rival Crock
Rival Crock Pot
Roger & Bros. Silver Plated

Secretary Desk with Fold Out Top
Serving Cart
Serving Plate
Sewing Box
Sewing Boxes
Sewing Supplies
Shanghai Rummy
Side Table
Singer Sewing Machine in Wood Cabinet
Small Lamps
Snowflake Express Train
Stand Up Dresser with Mirror
Stanley Hand Saw
Suitcase with Rollers
Swivel Bookcase Table
Table with Brass Feet
Taj Mahal Marble Like Busse
Texaco Cast Iron Car
Thomas Organ
Tools
Toro 159CC Lawn Mower (Electric and Gas)
Toro Gas Powerlite 98CC Snow Blower
Toro Leaf Blower
Train Set
Upholstered Arm Chair
Upholstered Rocker - Red
Vanity Dovetail
Wall Mirror
Wall Table with Mirror and Marble Top
Walter Chapman Framed
Wartime Coinage Collection
Waverly for Slide Guitar
Werner 250 lb. Ladder
William Rodgers Silver Plated
Coffee Server Set
Wood and Metal Outdoor Bench
Wood Candle Holders
Wood Carrier
Wood Case Carving Set

REAL ESTATE AUCTION AT 5:15 PM

Preview and Registration
Begins at 4:00 pm



Sylvania brick "uptown" home in highly desired location with town shops, restaurants, and Highland Meadows Golf Course just around the corner. Ideal for investor flip with cosmetic fix up or buyer looking for instant equity. Two first floor bedrooms with large 3rd bedroom on the second level with separate bath and open bonus area. Finished basement features a fireplace and bar. Long term owner moving and selling furnishings and real estate.

Property Features

Brick Single Family Home
2 Car Detached Garage
Concrete Driveway
Finished Rec Room
Eat-In Kitchen
Enclosed Porch
Gas Forced Air Heating
Central Air
Public Water / Sewer

Room Dimensions

Living Room:	19 x 12
Dining Room:	13 x 8
Eat-In Kitchen:	14 x 8
Master Bed:	19 x 12
Bedroom #2:	12 x 13
Bedroom #3:	12 x 12
Rec Room:	22 x 17
Enclosed Porch:	16 x 7
Craft / Storage Room	

Other Information

Lot Size:	70 x 130
No. of Baths:	1.5
Foundation:	Basement
Square Feet:	1,589+/-
School District:	Sylvania
High School:	Northview
Half Year Taxes:	\$1,474.95
Homestead:	\$375.56
TD Parcel No.	82-08457

Directions: Off Erie Street, west of Main Street.