

PUBLIC AUCTION

LEE AND WHITESIDE COUNTY FARMLAND

700+/- Acres

The following described farmland real estate will be offered by PUBLIC AUCTION.

Sale day location: Deer Valley Golf Course Banquet Center, 3298 Hoover Road, Deer Grove, IL 61243.

OPEN
TENANCY
2017

Wednesday, February 1, 2017
10:00 A.M.

OPEN
TENANCY
2017

TRACT 1: 80 +/- Acres. Located the E ½ of SW ¼ of Section 36, Montmorency Township, Whiteside County, IL. West of County Line Road on Arch Road ½ mile, farm lies north side of blacktop. 80 +/- Acres with 66.14 FSA tillable acres. **Surety Productivity Index is 104.8.** Tax ID #17-36-300-002, 2015 taxes paid in 2016 were \$435.90 and \$87.50 drainage.

TRACT 2: 53 +/- Acres. Located most of W ½ of NW ¼ (West of ditch) of Section 30, Harmon Twp., Lee County, IL. Located the SE corner of Hamilton Rd (County Line) and VanPetten Road. 53 +/- Acres with 49.34 FSA tillable acres. **Surety Productivity Index is 117.6.** Tax ID # (part of) 13-30-100-002. 2015 taxes paid in 2016 were \$16.50 +/- per tillable acre.

TRACT 3: 77 +/- Acres. Located NW ¼ (East of ditch and West of RR) of Section 30, Harmon Twp., Lee County, IL. Located ¼ mile East of the corner of VanPetten and Hamilton Roads. 77 +/- Acres with 74.60 FSA tillable acres. **Surety Productivity Index is 119.7 +/-.** Tax ID # (part of) 13-30-100-002. 2015 taxes paid in 2016 were approximately \$16.50 +/- per tillable acre.

TRACT 4: 87.5 +/- Acres. Located part of E ½ of NE ¼ of the NW ¼ (East of RR) and N ½ of NE ¼, Section 30, Harmon Township, Lee County, IL. Parcel lies ½ mile E of Hamilton Road on VanPetten Road. 87.5 +/- Acres with 85.46 +/- tillable acres. **Surety Productivity Index is 105.9 +/-.** Tax ID # (part of) 13-30-100-002 and #13-30-200-001. 2015 taxes paid in 2016 were approximately \$9.87 +/- per tillable acre.

TRACT 5: 93.5 +/- Acres. Located SE ¼ (East of RR) of NW ¼ and S ½ of NE 1/4, Section 30, Harmon Twp., Lee County, IL. Parcel lies ½ mile S of VanPetten Road on Eakle Road (West side). 93.5 +/- Acres with 92.69 +/- tillable acres. **Surety Productivity Index is 107.8 +/-.** Tax ID # (part of) 13-30-100-002 and 13-30-200-002. 2015 taxes paid in 2016 were approximately \$10.70 +/- per tillable acre.

TRACT 6: 80 +/- Acres. Located S ½ of NW ¼ Section 29, Harmon Township, Lee County, IL. Parcel lies ½ mile S of VanPetten Road on Eakle Road (East side). 80 +/- Acres with 79.13 FSA tillable acres. **Surety Productivity Index is 108.2 +/-.** Tax ID #13-29-100-003. 2015 taxes paid in 2016 were \$582.00.

TRACT 7: 160 +/- Acres. Located NW ¼ of Section 4, Hamilton Twp., Lee County, IL. Parcel lies on the SE corner of Indianhead and Arch Roads. 160 +/- Acres with 155.91 +/- tillable acres. **Surety Productivity Index is 112.2 +/-.** Tax ID # (part of) 19-04-100-002 and (part of) 19-04-100-001. 2015 taxes were paid in 2016 were approximately \$10.57 per tillable acre.

TRACT 8: 76 +/- Acres. Located N ½ of SW ¼ Section 4, Hamilton Twp., Lee County, IL. Parcel lies ¾ mile S of Arch Road on Indianhead Road. 76 +/- Acres with 68.21 +/- tillable acres. **Surety Productivity Index is 103.5 +/-.** Tax ID # (part of) 19-04-100-002 and (part of) 19-04-100-001. 2015 taxes paid in 2016 were \$10.57 +/- per tillable acre.

Plat locations, Aerial Photos, Soil Maps and improvement information available @ rickrediger.com

TERMS AND CONDITIONS:

- 1.) The parcel will be sold on a per surveyed acre basis. Survey provided by seller.
- 2.) The successful bidder will be required to enter into a standard purchase agreement contract. 10% of the contract purchase price will be due immediately following the auction. The balance will be due and payable within 30 calendar days at closing.
- 3.) The seller shall provide a title insurance policy in the amount of the purchase price of the subject properties.
- 4.) The estimated 2016 real estate taxes due and payable in 2017 will be credited by the Seller to the Buyer. All subsequent real estate taxes will be the responsibility of the buyer.
- 5.) The property is being sold in "AS IS" condition, with no implied warranties of any kind.
- 6.) **The information is believed to be accurate.** However, we strongly urge all prospective buyers to thoroughly research all pertinent data and to draw their own conclusions.
- 7.) All announcements made the day of the sale take precedence over any previously printed material.
- 8.) For additional information or to view the property contact Rick Rediger, Auctioneer at 815-699-7999.

SELLER: Edward Miller Trust & Mary L. Miller Trust

Attorney: Larry Johnson
Ward, Murray, Pace and Johnson
202 E. 5th St., Sterling, IL 61081

Number System will be Used – I.D. Required

Not Responsible for Accidents

REDIGER AUCTION SERVICE – WYANET, IL 815.699.7999

Plat Location

Tract 1

MONTMORENCY PLAT

T-20-N ♦ R-7-E

WHITESIDE COUNTY, ILLINOIS

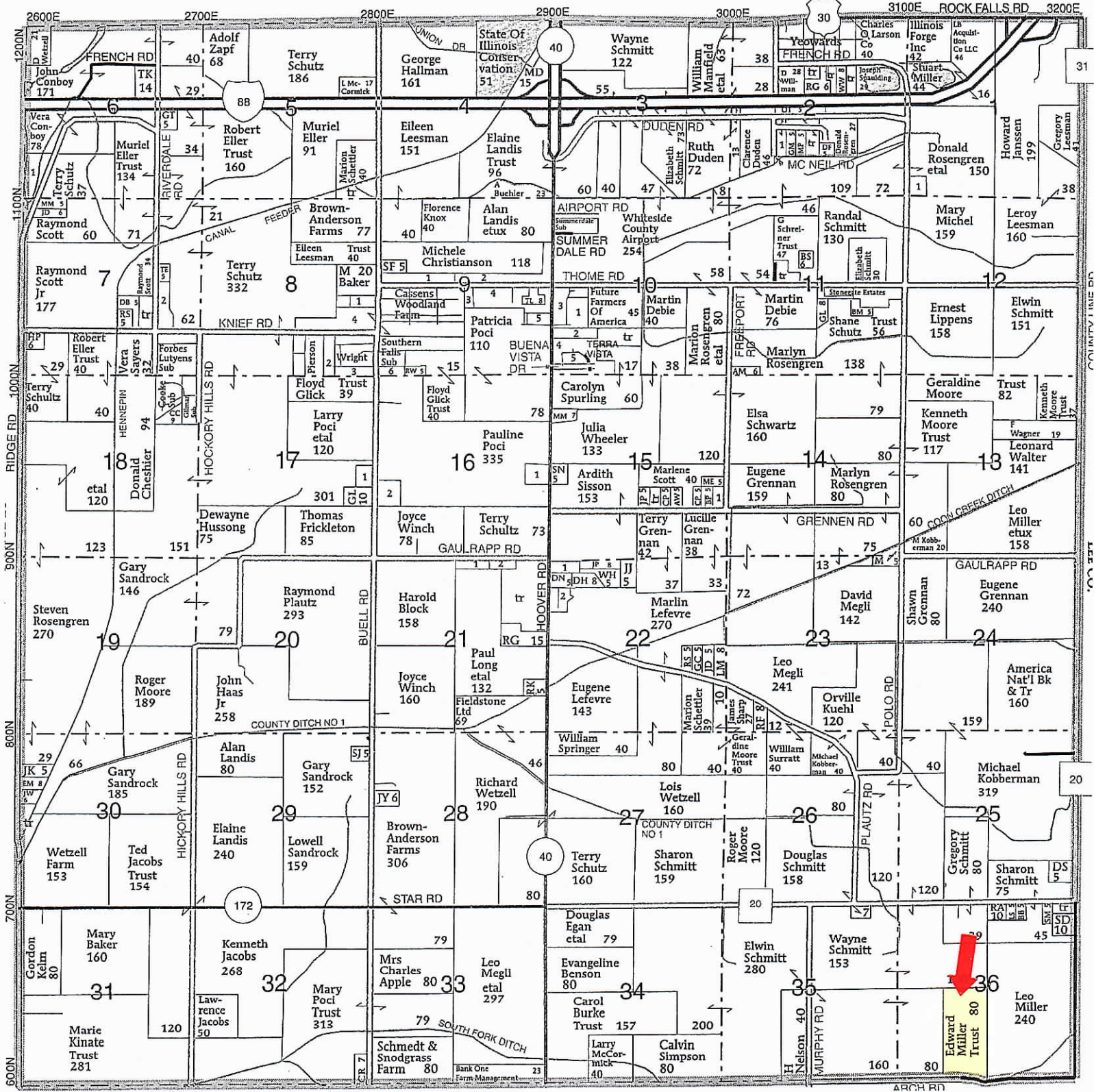
© Farm & Home Publishers, Ltd.

(Landowners)

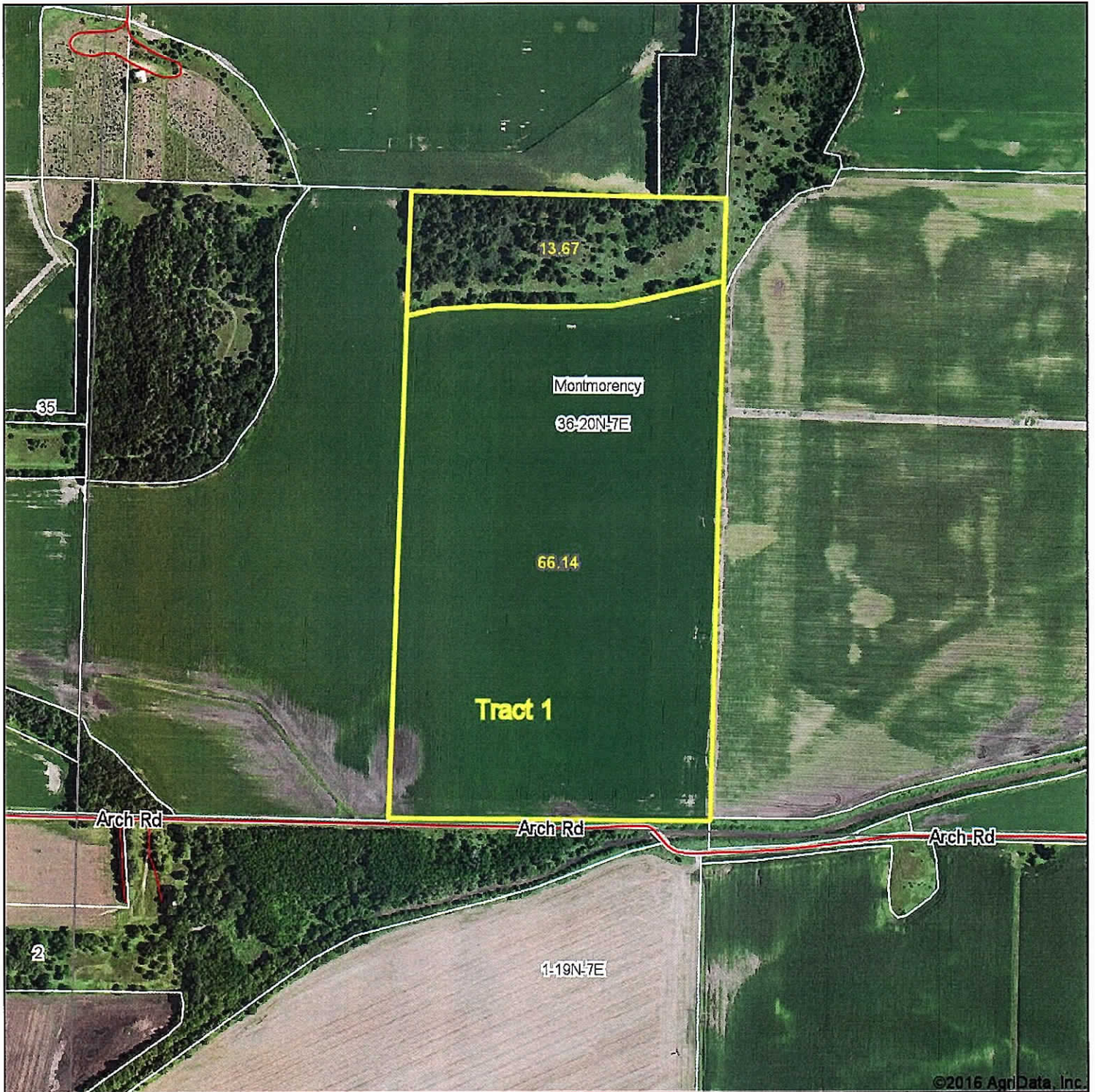
See Page 66 For Additional Names.



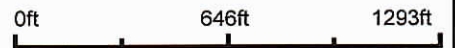
COLOMA PAGE 42



Aerial Map



map center: 41° 40' 28.82, -89° 38' 40.35



Auction Service
REDIGER
Whiteside, IL
815-699-7999

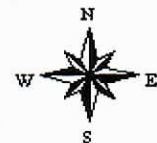
Maps Provided By:



© AgriData, Inc. 2016

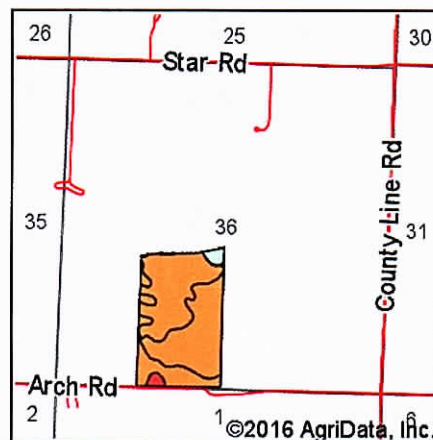
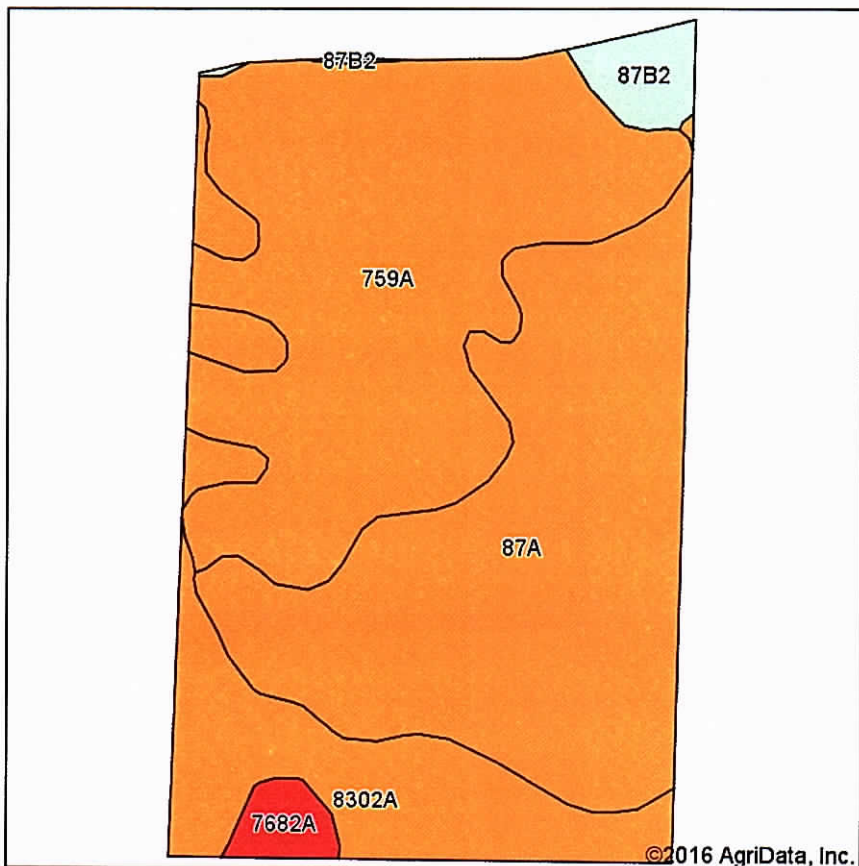
www.AgriDataInc.com

36-20N-7E
Whiteside County
Illinois



12/6/2016

Soils Map



State: Illinois
 County: Whiteside
 Location: 36-20N-7E
 Township: Montmorency
 Acres: 66.14
 Date: 12/6/2016

Auction Service
REDIGER
 Warsaw, IN
 815-689-7999

Maps Provided By:
surety
 CUSTOMIZED ONLINE MAPPING
 © AgriData, Inc. 2016 www.AgriDataInc.com



Area Symbol: IL195, Soil Area Version: 12

Code	Soil Description	Acres	Percent of field	Il. State Productivity Index Legend	Corn Bu/A	Soybeans Bu/A	Crop productivity index for optimum management
759A	Udolpho loam, sandy substratum, 0 to 2 percent slopes	26.49	40.1%		136	45	101
87A	Dickinson sandy loam, 0 to 2 percent slopes	25.60	38.7%		142	46	104
8302A	Ambraw loam, 0 to 2 percent slopes, occasionally flooded	11.22	17.0%		154	50	114
**87B2	Dickinson sandy loam, 2 to 7 percent slopes, eroded	1.68	2.5%		**135	**44	**99
7682A	Medway loam, 0 to 2 percent slopes, rarely flooded	1.15	1.7%		176	57	131
Weighted Average					142	46.4	104.8

Area Symbol: IL195, Soil Area Version: 12

Table: Optimum Crop Productivity Ratings for Illinois Soil by K.R. Olson and J.M. Lang, Office of Research, ACES, University of Illinois at Champaign-Urbana. Version: 1/2/2012 Amended Table S2 B811

Crop yields and productivity indices for optimum management (B811) are maintained at the following NRES web site:

<https://www.ideals.illinois.edu/handle/2142/1027/>

** Indexes adjusted for slope and erosion according to Bulletin 811 Table S3

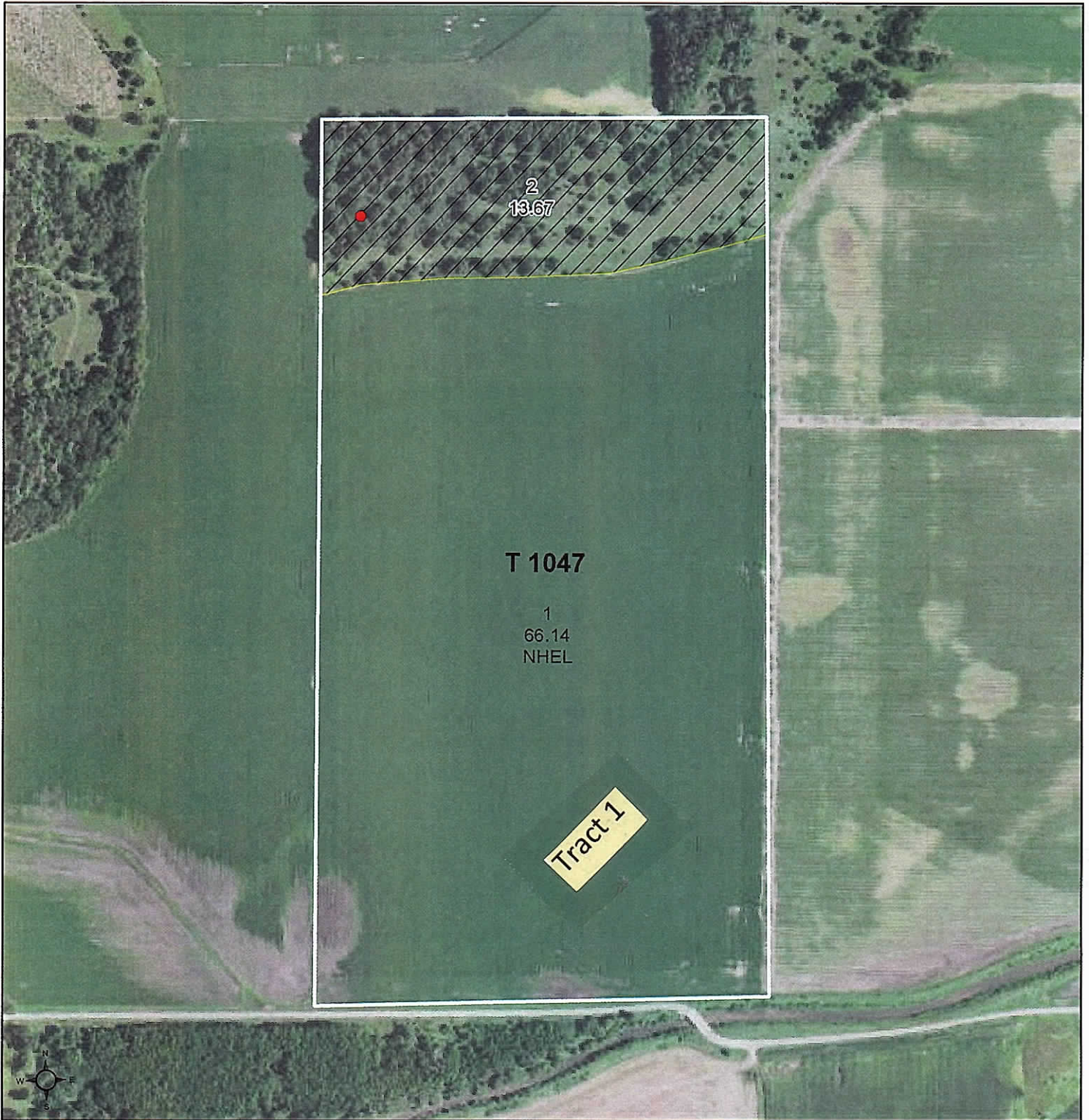
Soils data provided by USDA and NRCS. Soils data provided by University of Illinois at Champaign-Urbana.

*c: Using Capabilities Class Dominant Condition Aggregation Method



United States
Department of
Agriculture

Lee County, Illinois



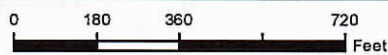
Common Land Unit

- Non-Cropland
- Cropland

Wetland Determination Identifiers

- Restricted Use
- Limited Restrictions
- Exempt from Conservation Compliance Provisions

Tract Boundary



2016 Program Year

Map Created January 13, 2016

Farm **5351**

Tract **1047**

Tract Cropland Total: 66.14 acres

United States Department of Agriculture (USDA) Farm Service Agency (FSA) maps are for FSA Program administration only. This map does not represent a legal survey or reflect actual ownership; rather it depicts the information provided directly from the producer and/or National Agricultural Imagery Program (NAIP) imagery. The producer accepts the data 'as is' and assumes all risks associated with its use. USDA-FSA assumes no responsibility for actual or consequential damage incurred as a result of any user's reliance on this data outside FSA Programs. Wetland identifiers do not represent the size, shape, or specific determination of the area. Refer to your original determination (CPA-026 and attached maps) for exact boundaries and determinations or contact USDA Natural Resources Conservation Service (NRCS).

Illinois

U.S. Department of Agriculture

FARM: 5351

Lee

Farm Service Agency

Prepared: 12/6/16 10:09 AM

Report ID: FSA-156EZ

Abbreviated 156 Farm Record

Crop Year: 2017

Page: 1 of 3

DISCLAIMER: This is data extracted from the web farm database. Because of potential messaging failures in MIDAS, this data is not guaranteed to be an accurate and complete representation of data contained in the MIDAS system, which is the system of record for Farm Records.

Tract Number: 1047 Description: WH 5 SEC 36 Montmorency Twp Whiteside Co.

BIA Range Unit Number:

HEL Status: NHEL: no agricultural commodity planted on undetermined fields

Wetland Status: Tract contains a wetland or farmed wetland

WL Violations: None

Farmland	Cropland	DCP Cropland	WBP	WRP/EWP	CRP Cropland	GRP
79.81	66.14	66.14	0.0	0.0	0.0	0.0
State Conservation	Other Conservation	Effective DCP Cropland	Double Cropped	MPL/FWP	Native Sod	
0.0	0.0	66.14	0.0	0.0	0.0	

Crop	Base Acreage	CTAP Tran Yield	PLC Yield	CCC-505 CRP Reduction
CORN	63.03		123	0.0
SOYBEANS	2.65		38	0.0
Total Base Acres:	65.68			

Owners: MARY LORRAINE MILLER TRUST

Other Producers: None

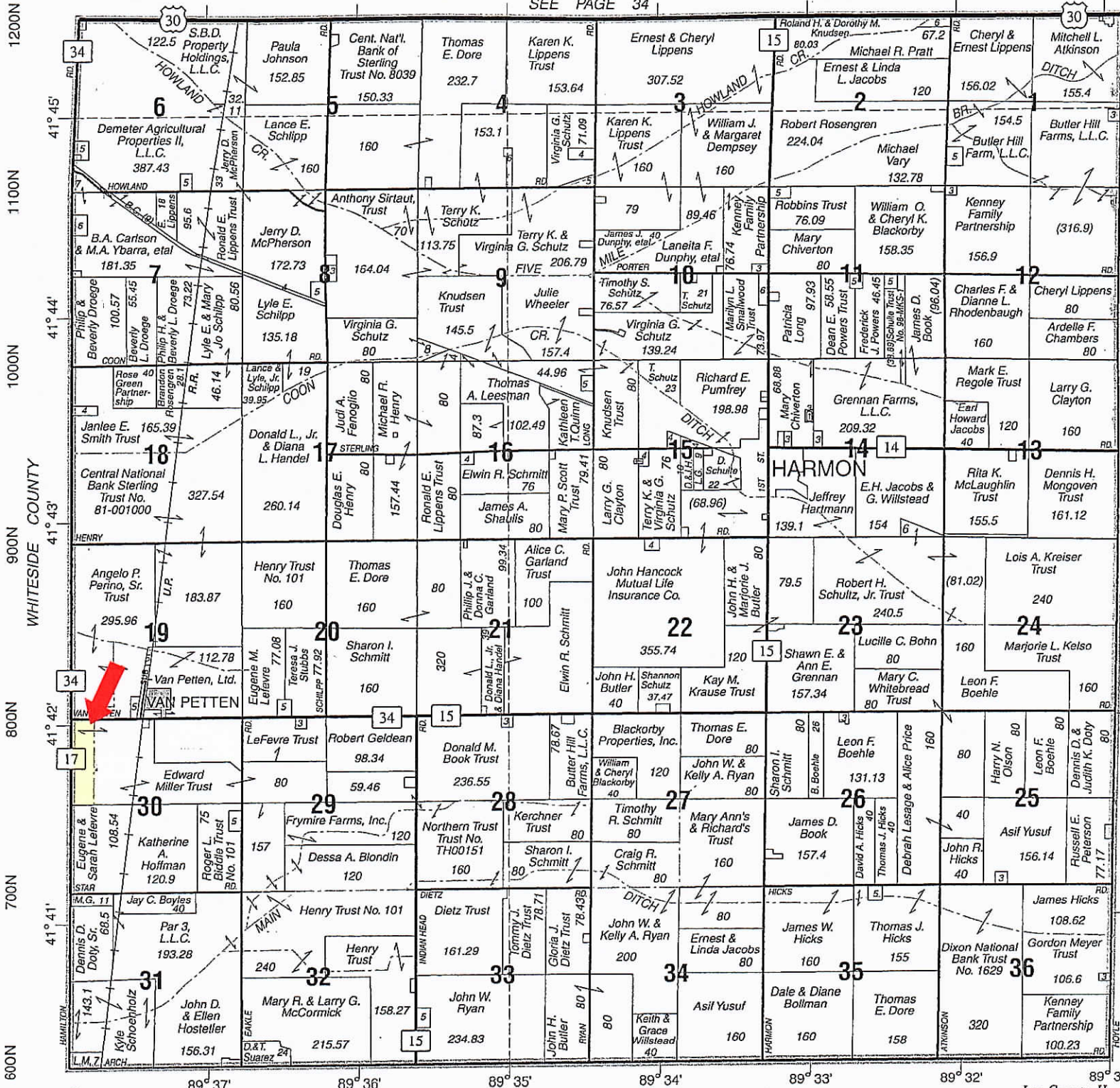
Plat Location

Tract 2

HARMON

T.20N.-R.8E.

SEE PAGE 34



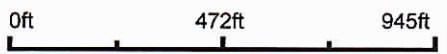
Aerial Map



©2016 AgriData, Inc.

Auction Service
REDIGER
Wyanet, IL
815-699-7999

map center: 41° 41' 49.44, -89° 37' 45.03



Maps Provided By:
 **surety**
CUSTOMIZED ONLINE MAPPING
© AgriData, Inc. 2016 www.AgrIDataInc.com

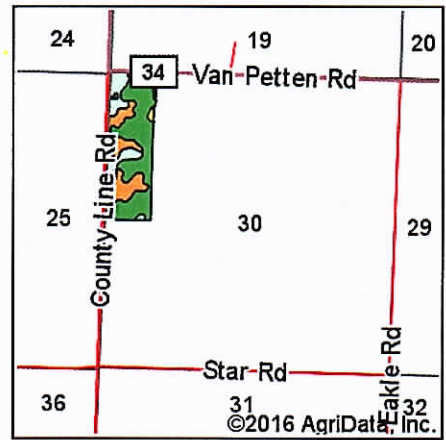
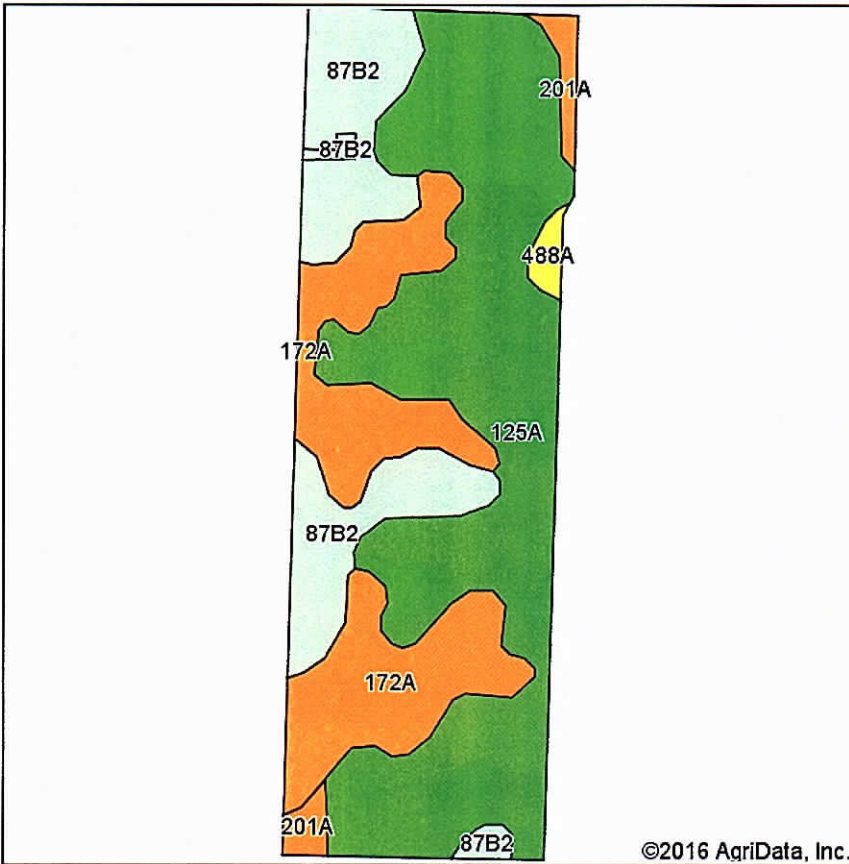
30-20N-8E
Lee County
Illinois



12/6/2016

Field borders provided by Farm Service Agency as of 5/21/2008. Soils data provided by University of Illinois at Champaign-Urbana.

Soils Map



State: Illinois
 County: Lee
 Location: 30-20N-8E
 Township: Harmon
 Acres: 49.52
 Date: 12/6/2016

Auction Service
REDIGER
 Wyanet, IL
 815-699-7999

Maps Provided By:
surety
 CUSTOMIZED ONLINE MAPPING
 © AgriData, Inc. 2016 www.AgriDataInc.com



Area Symbol: IL103, Soil Area Version: 11

Code	Soil Description	Acres	Percent of field	Il. State Productivity Index Legend	Corn Bu/A	Soybeans Bu/A	Crop productivity index for optimum management
125A	Selma loam, 0 to 2 percent slopes	25.85	52.2%		176	57	129
172A	Hoopeston sandy loam, 0 to 2 percent slopes	12.34	24.9%		147	48	109
**87B2	Dickinson sandy loam, 2 to 7 percent slopes, eroded	9.64	19.5%		**135	**44	**99
201A	Gilford fine sandy loam, 0 to 2 percent slopes	1.19	2.4%		148	49	110
488A	Hooppole loam, 0 to 2 percent slopes	0.50	1.0%		163	54	121
Weighted Average					160	52	117.6

Area Symbol: IL103, Soil Area Version: 11

Table: Optimum Crop Productivity Ratings for Illinois Soil by K.R. Olson and J.M. Lang, Office of Research, ACES, University of Illinois at Champaign-Urbana. Version: 1/2/2012 Amended Table S2 B811

Crop yields and productivity indices for optimum management (B811) are maintained at the following NRES web site:

<https://www.ideals.illinois.edu/handle/2142/1027/>

** Indexes adjusted for slope and erosion according to Bulletin 811 Table S3

Soils data provided by USDA and NRCS. Soils data provided by University of Illinois at Champaign-Urbana.

*c: Using Capabilities Class Dominant Condition Aggregation Method

Plat Location

Tract 3

HARMON

T.20N.-R.8E.

SEE PAGE 34



SEE PAGE 34

Lee County, IL

Aerial Map



Auction Service
REDIGER
Wyanet, IL
815-699-7999

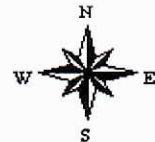
Maps Provided By:

CUSTOMIZED ONLINE MAPPING
© AgriData, Inc. 2016 www.AgriDataInc.com

map center: 41° 41' 49.44, -89° 37' 44.53

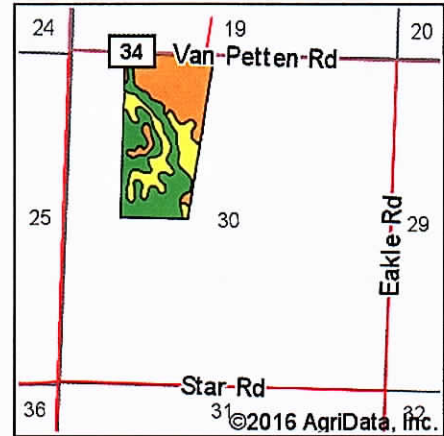
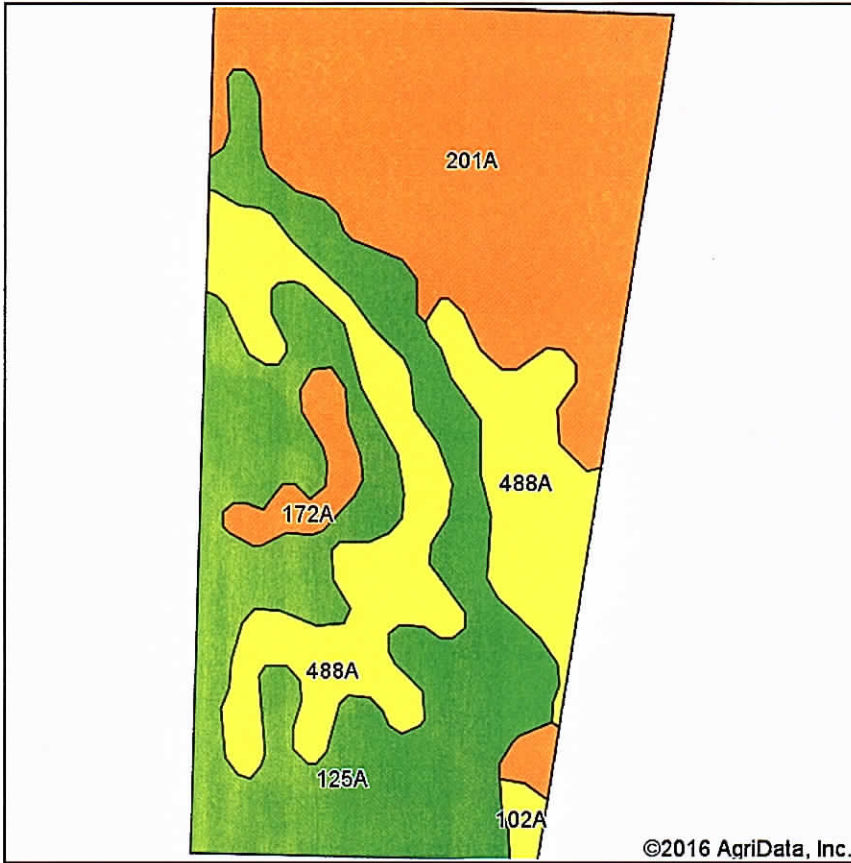


30-20N-8E
Lee County
Illinois



12/6/2016

Soils Map



State: Illinois
 County: Lee
 Location: 30-20N-8E
 Township: Harmon
 Acres: 74.6
 Date: 12/6/2016

Auction Service
REDIGER
 Wyatt, IL
 815-699-7999

Maps Provided By:

 CUSTOMIZED ONLINE MAPPING
 © AgriData, Inc. 2016 www.AgriDataInc.com



Soils data provided by USDA and NRCS.

Area Symbol: IL103, Soil Area Version: 11

Code	Soil Description	Acres	Percent of field	Il. State Productivity Index Legend	Corn Bu/A	Soybeans Bu/A	Crop productivity index for optimum management
125A	Selma loam, 0 to 2 percent slopes	27.96	37.5%		176	57	129
201A	Gilford fine sandy loam, 0 to 2 percent slopes	26.65	35.7%		148	49	110
488A	Hooppole loam, 0 to 2 percent slopes	17.31	23.2%		163	54	121
172A	Hoopeston sandy loam, 0 to 2 percent slopes	2.06	2.8%		147	48	109
102A	La Hogue loam, 0 to 2 percent slopes	0.62	0.8%		162	52	121
Weighted Average					162.1	53.2	119.7

Area Symbol: IL103, Soil Area Version: 11

Table: Optimum Crop Productivity Ratings for Illinois Soil by K.R. Olson and J.M. Lang, Office of Research, ACES, University of Illinois at Champaign-Urbana. Version: 1/2/2012 Amended Table S2 B811

Crop yields and productivity indices for optimum management (B811) are maintained at the following NRES web site:
<https://www.ideals.illinois.edu/handle/2142/1027/>

** Indexes adjusted for slope and erosion according to Bulletin 811 Table S3

Soils data provided by USDA and NRCS. Soils data provided by University of Illinois at Champaign-Urbana.

*c: Using Capabilities Class Dominant Condition Aggregation Method



United States
Department of
Agriculture

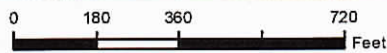
Lee County, Illinois



Common Land Unit

- Non-Cropland
- Cropland

Tract Boundary



2016 Program Year

Map Created January 13, 2016

Wetland Determination Identifiers

- Restricted Use
- Limited Restrictions
- Exempt from Conservation Compliance Provisions

Farm 5351
Tract 4892

Tract Cropland Total: 123.94 acres

United States Department of Agriculture (USDA) Farm Service Agency (FSA) maps are for FSA Program administration only. This map does not represent a legal survey or reflect actual ownership; rather it depicts the information provided directly from the producer and/or National Agricultural Imagery Program (NAIP) imagery. The producer accepts the data 'as is' and assumes all risks associated with its use. USDA-FSA assumes no responsibility for actual or consequential damage incurred as a result of any user's reliance on this data outside FSA Programs. Wetland identifiers do not represent the size, shape, or specific determination of the area. Refer to your original determination (CPA-026 and attached maps) for exact boundaries and determinations or contact USDA Natural Resources Conservation Service (NRCS).

Illinois

U.S. Department of Agriculture

FARM: 5351

Lee

Farm Service Agency

Prepared: 12/6/16 10:09 AM

Report ID: FSA-156EZ

Abbreviated 156 Farm Record

Crop Year: 2017

Page: 3 of 3

DISCLAIMER: This is data extracted from the web farm database. Because of potential messaging failures in MIDAS, this data is not guaranteed to be an accurate and complete representation of data contained in the MIDAS system, which is the system of record for Farm Records.

Tract Number: 4892 Description: H 1 SEC 30 HARMON TWP

BIA Range Unit Number:

HEL Status: NHEL: no agricultural commodity planted on undetermined fields

Wetland Status: Tract contains a wetland or farmed wetland

WL Violations: None

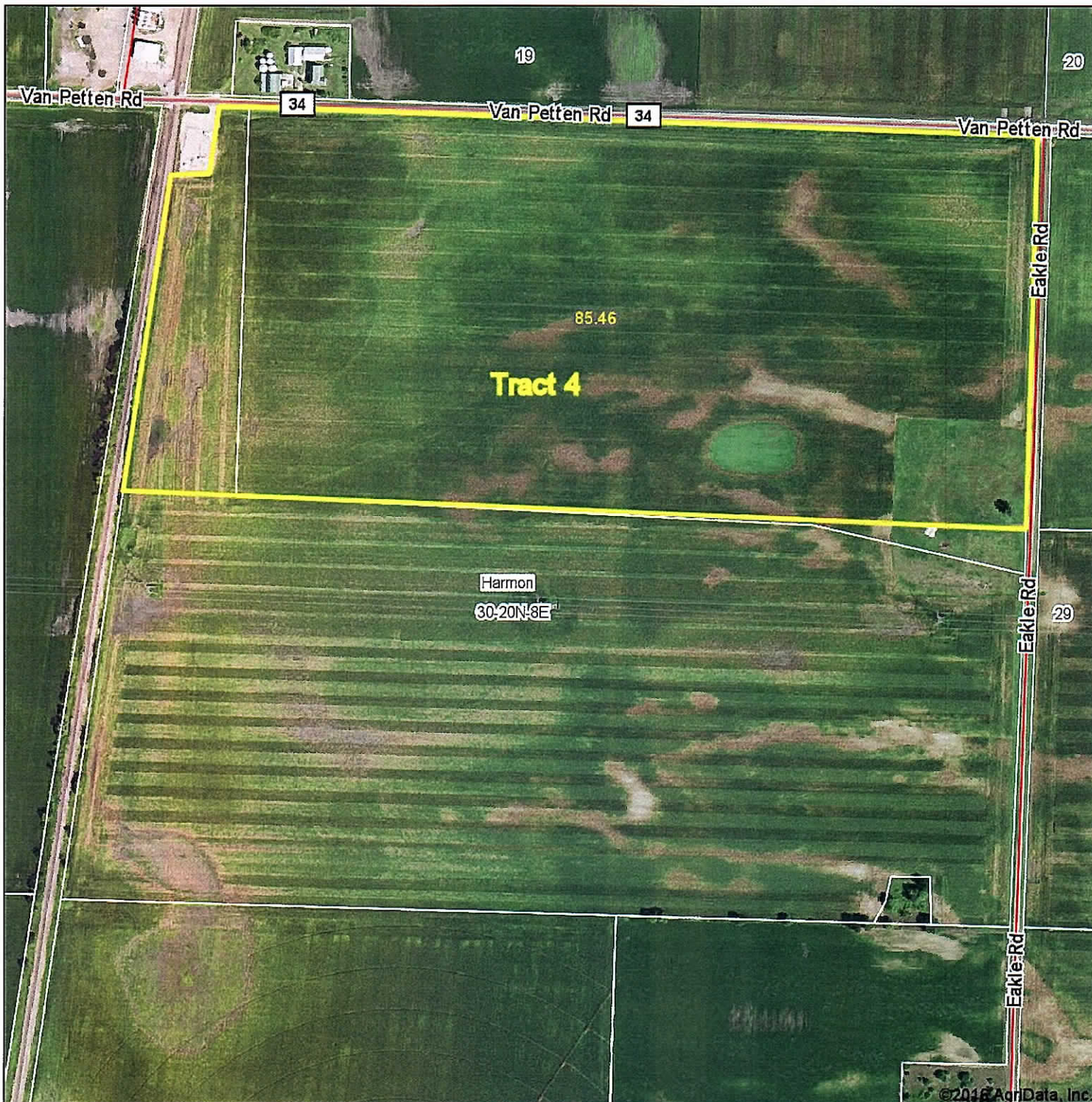
Farmland	Cropland	DCP Cropland	WBP	WRP/EWP	CRP Cropland	GRP
127.46	123.94	123.94	0.0	0.0	0.0	0.0
State Conservation	Other Conservation	Effective DCP Cropland	Double Cropped	MPL/FWP		
0.0	0.0	123.94	0.0	0.0		

Crop	Base Acreage	CTAP Tran Yield	PLC Yield	CCC-505 CRP Reduction
CORN	118.15		123	0.0
SOYBEANS	4.97		38	0.0
Total Base Acres:	123.12			

Owners: EDWARD P MILLER TRUST

Other Producers: None

Aerial Map



©2016 AgriData, Inc.

Auction Service
REDIGER
Wyanet, IL
815-699-7999

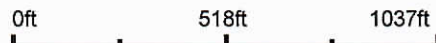
Maps Provided By:



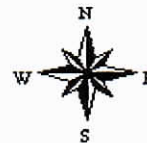
© AgriData, Inc. 2016

www.AgriDataInc.com

map center: 41° 41' 47.57, -89° 37' 7.58

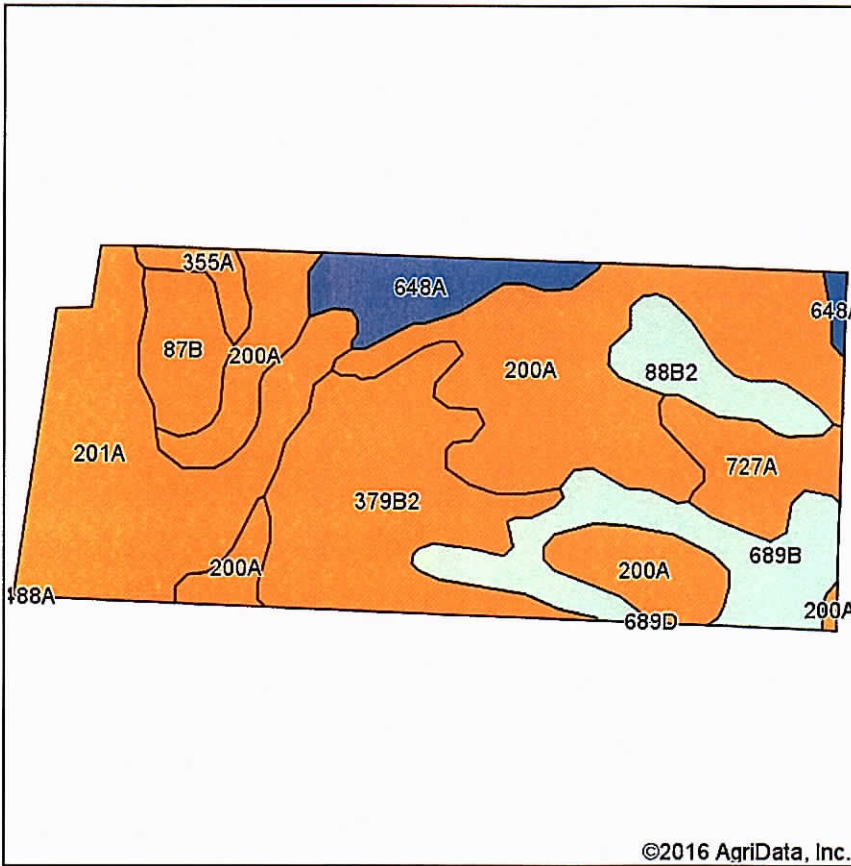


30-20N-8E
Lee County
Illinois

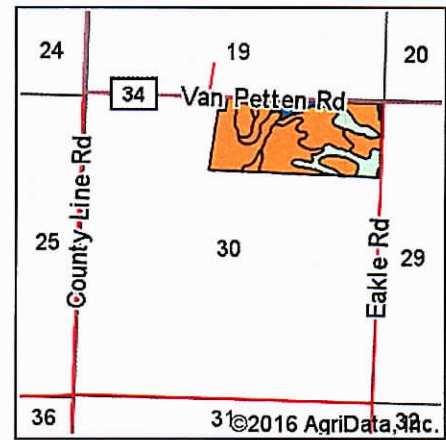


12/6/2016

Soils Map



Soils data provided by USDA and NRCS.



State: Illinois
 County: Lee
 Location: 30-20N-8E
 Township: Harmon
 Acres: 85.46
 Date: 12/6/2016

Auction Service
REDIGER
 Wyanet, IL
 815-689-7999

Maps Provided By:

 CUSTOMIZED ONLINE MAPPING
 © AgriData, Inc. 2016 www.AgriDataInc.com



Area Symbol: IL103, Soil Area Version: 11

Code	Soil Description	Acres	Percent of field	Il. State Productivity Index Legend	Corn Bu/A	Soybeans Bu/A	Crop productivity index for optimum management
200A	Orio loam, 0 to 2 percent slopes	27.61	32.3%		147	48	110
201A	Gilford fine sandy loam, 0 to 2 percent slopes	16.66	19.5%		148	49	110
**379B2	Dakota sandy loam, 2 to 5 percent slopes, eroded	14.71	17.2%		**143	**47	**106
**689B	Coloma sand, 1 to 7 percent slopes	8.56	10.0%		**101	**32	**75
648A	Clyde clay loam, 0 to 2 percent slopes	4.61	5.4%		186	62	139
727A	Waukee loam, 0 to 2 percent slopes	4.43	5.2%		147	49	109
**88B2	Sparta loamy sand, 2 to 7 percent slopes, eroded	3.88	4.5%		**113	**39	**87
**87B	Dickinson sandy loam, 2 to 5 percent slopes	3.74	4.4%		**141	**46	**103
355A	Binghampton sandy loam, 0 to 2 percent slopes	1.26	1.5%		142	45	105
Weighted Average					142.1	46.7	105.9

Area Symbol: IL103, Soil Area Version: 11

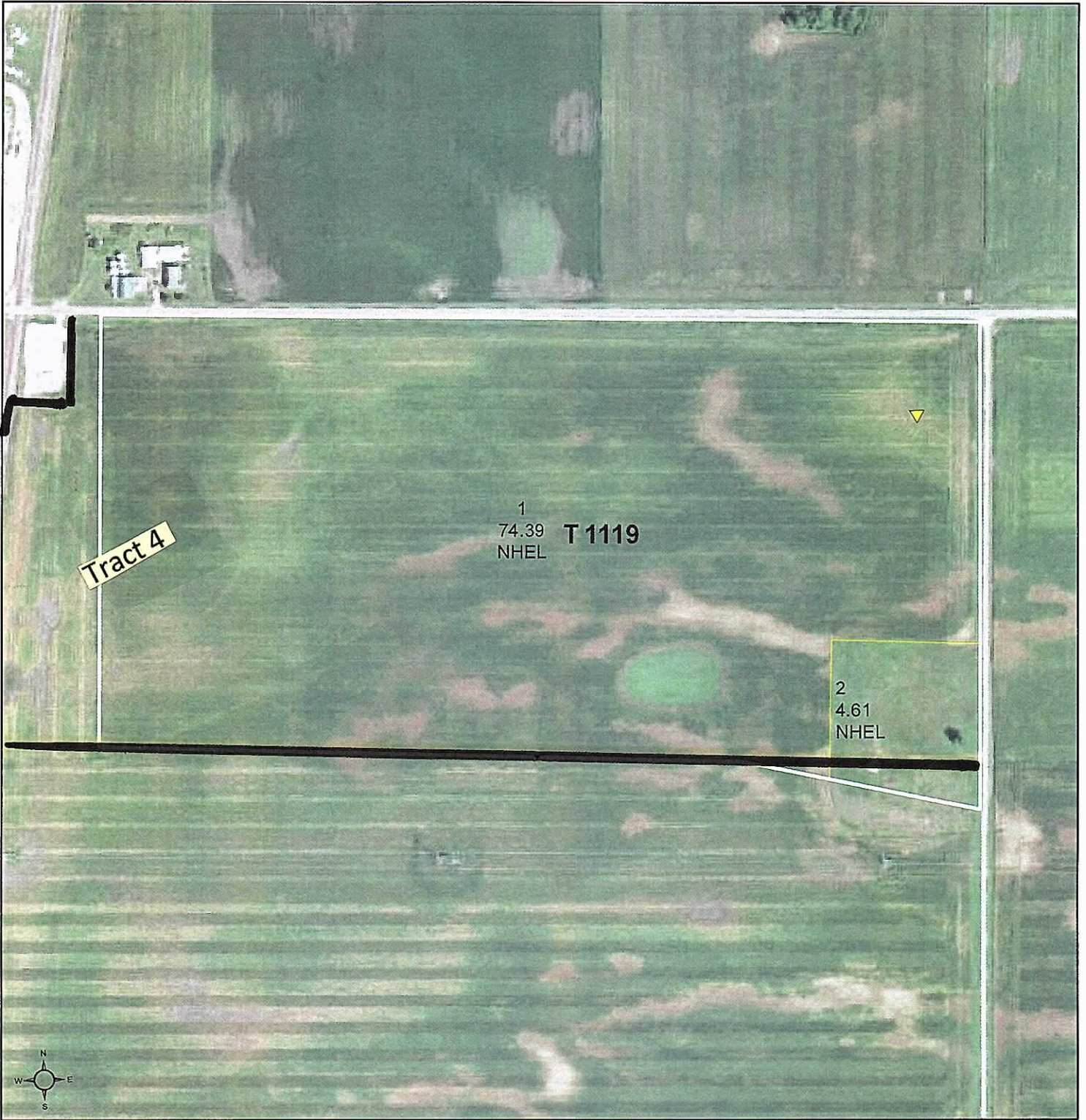
Table: Optimum Crop Productivity Ratings for Illinois Soil by K.R. Olson and J.M. Lang, Office of Research, ACES, University of Illinois at Champaign-Urbana. Version: 1/2/2012 Amended Table S2 B811

Crop yields and productivity indices for optimum management (B811) are maintained at the following NRES web site:
<https://www.ideals.illinois.edu/handle/2142/1027/>

** Indexes adjusted for slope and erosion according to Bulletin 811 Table S3

Soils data provided by USDA and NRCS. Soils data provided by University of Illinois at Champaign-Urbana.

*c: Using Capabilities Class Dominant Condition Aggregation Method

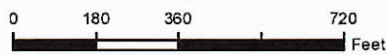


Common Land Unit

- Cropland
- Tract Boundary

Wetland Determination Identifiers

- Restricted Use
- ▼ Limited Restrictions
- Exempt from Conservation
- Compliance Provisions



2016 Program Year

Map Created January 13, 2016

Farm 800
Tract 1119

Tract Cropland Total: 79.00 acres

United States Department of Agriculture (USDA) Farm Service Agency (FSA) maps are for FSA Program administration only. This map does not represent a legal survey or reflect actual ownership; rather it depicts the information provided directly from the producer and/or National Agricultural Imagery Program (NAIP) imagery. The producer accepts the data 'as is' and assumes all risks associated with its use. USDA-FSA assumes no responsibility for actual or consequential damage incurred as a result of any user's reliance on this data outside FSA Programs. Wetland Identifiers do not represent the size, shape, or specific determination of the area. Refer to your original determination (CPA-026 and attached maps) for exact boundaries and determinations or contact USDA Natural Resources Conservation Service (NRCS).

Illinois

U.S. Department of Agriculture

Prepared: 12/6/16 10:08 AM

Lee

Farm Service Agency

Crop Year: 2017

Report ID: FSA-156EZ

Abbreviated 156 Farm Record

Page: 1 of 1

DISCLAIMER: This is data extracted from the web farm database. Because of potential messaging failures in MIDAS, this data is not guaranteed to be an accurate and complete representation of data contained in the MIDAS system, which is the system of record for Farm Records.

Operator Name SHAR EL FARMS INC	Farm Identifier Not Applicable	Recon Number
-------------------------------------------	------------------------------------------	---------------------

Farms Associated with Operator:
5351

CRP Contract Number(s): None

Farmland	Cropland	DCP Cropland	WBP	WRP/EWP	CRP Cropland	GRP	Farm Status	Number of Tracts
79.0	79.0	79.0	0.0	0.0	0.0	0.0	Active	1
State Conservation	Other Conservation	Effective DCP Cropland	Double Cropped	MPL/FWP				
0.0	0.0	79.0	0.0	0.0				

ARC/PLC

ARC-IC NONE	ARC-CO CORN	PLC NONE	PLC-Default NONE
----------------	----------------	-------------	---------------------

Crop	Base Acreage	CTAP Tran Yield	PLC Yield	CCC-505 CRP Reduction
CORN	75.6		128	0.0
Total Base Acres:	75.6			

Tract Number: 1119 **Description:** H 1 SEC 30 Harmon Twp

BIA Range Unit Number:

HEL Status: NHEL: no agricultural commodity planted on undetermined fields

Wetland Status: Tract contains a wetland or farmed wetland

WL Violations: None

Farmland	Cropland	DCP Cropland	WBP	WRP/EWP	CRP Cropland	GRP
79.0	79.0	79.0	0.0	0.0	0.0	0.0
State Conservation	Other Conservation	Effective DCP Cropland	Double Cropped	MPL/FWP		
0.0	0.0	79.0	0.0	0.0		

Crop	Base Acreage	CTAP Tran Yield	PLC Yield	CCC-505 CRP Reduction
CORN	75.6		128	0.0
Total Base Acres:	75.6			

Owners: JAMES J MILLER EDWARD T MILLER MARY L HUTCHISON	STEPHEN J MILLER AGNES M SMITH RICHARD P MILLER
----------------------------------------------------------------------	-------------------------------------------------------

Other Producers: None

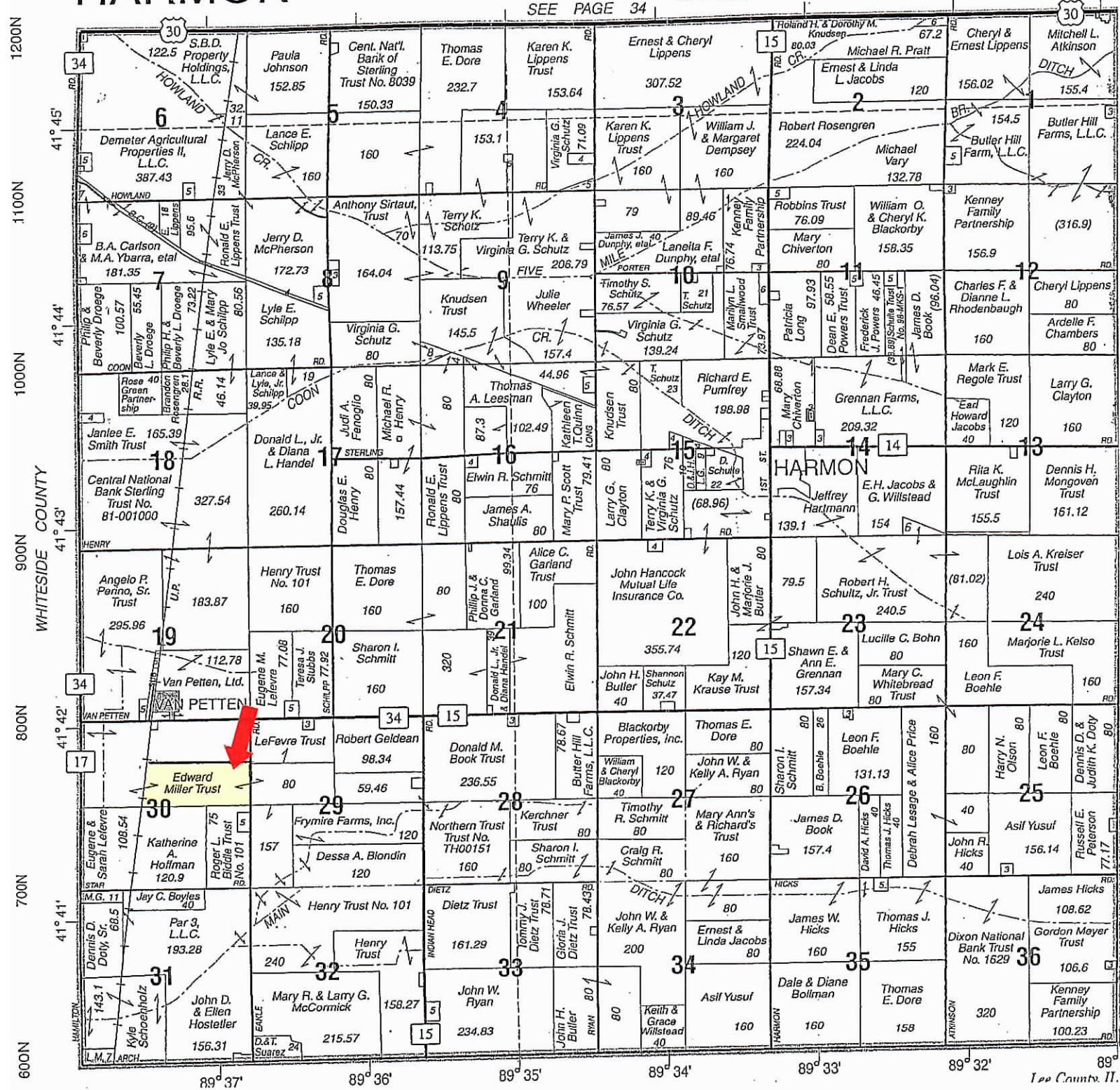
Plat Location

Tract 5

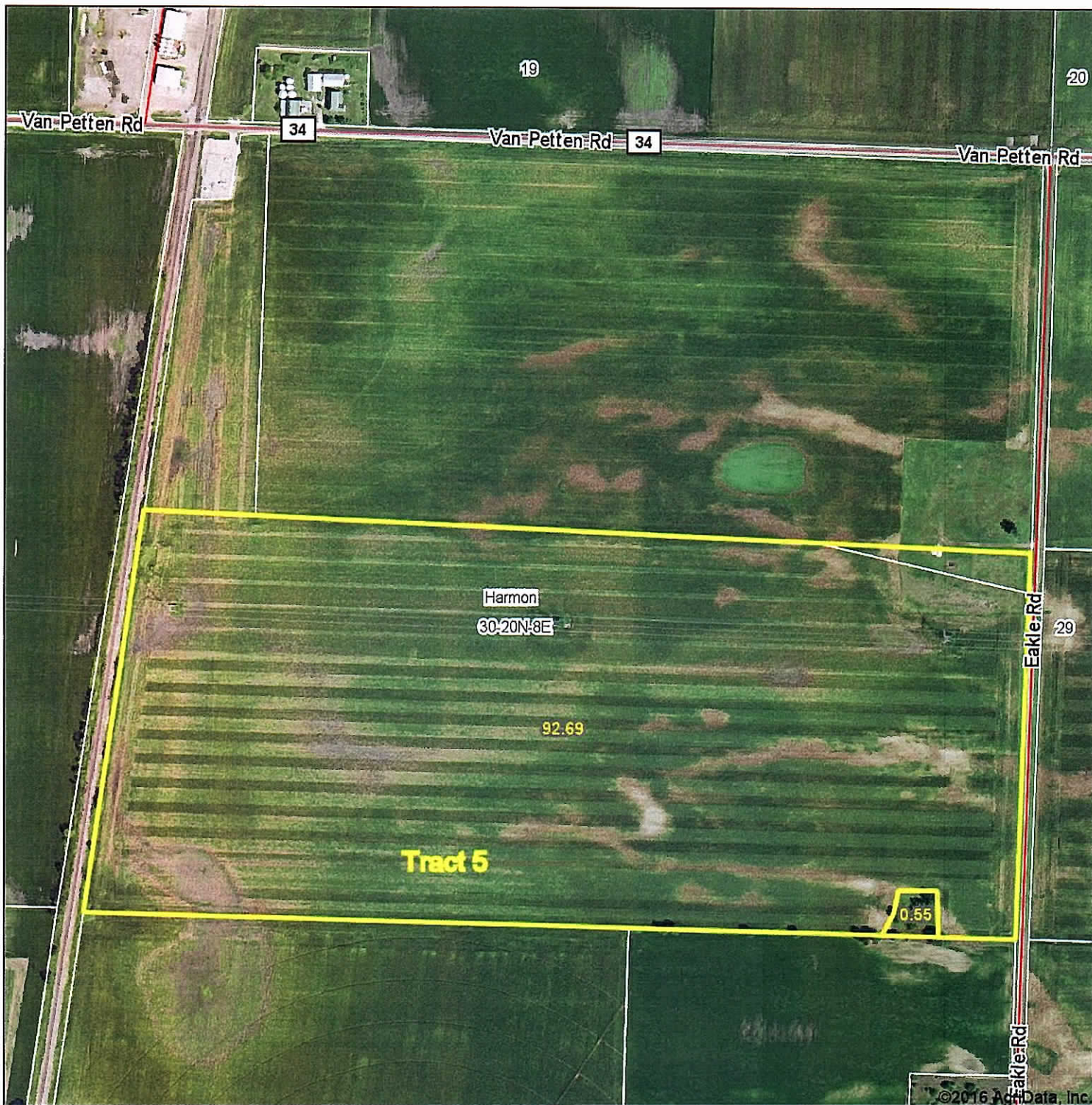
HARMON

T.20N.-R.8E.

SEE PAGE 34



Aerial Map



Auction Service
REDIGER
Wyanet, IL
815-699-7999

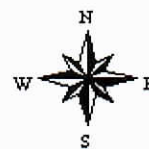
Maps Provided By:



map center: 41° 41' 48.12, -89° 37' 8.24

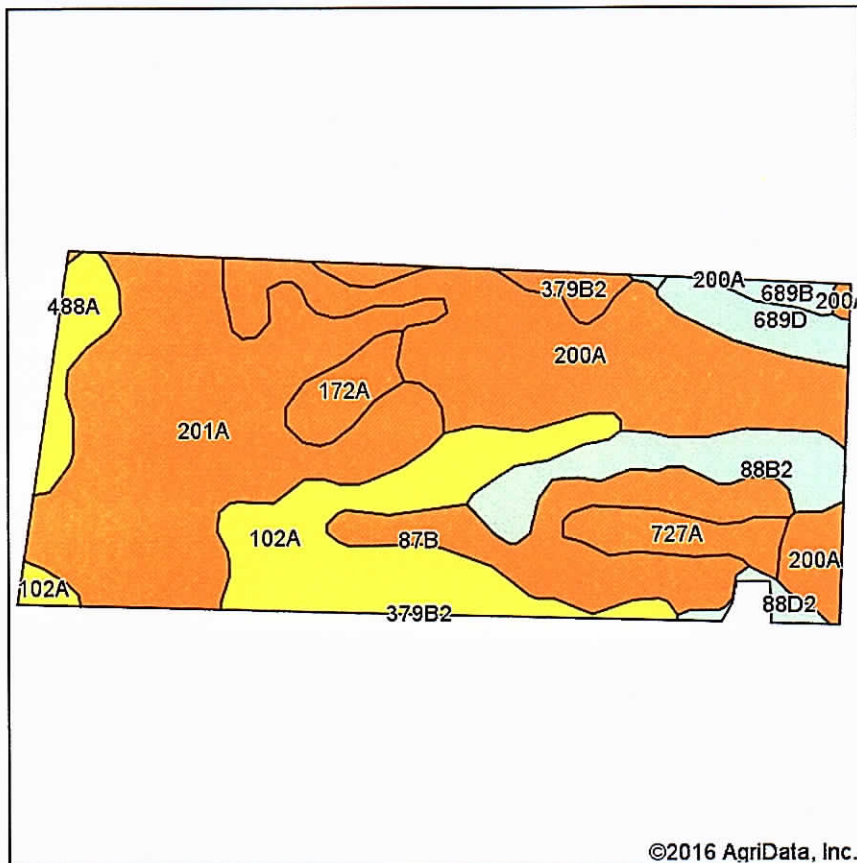
0ft 525ft 1050ft

30-20N-8E
Lee County
Illinois



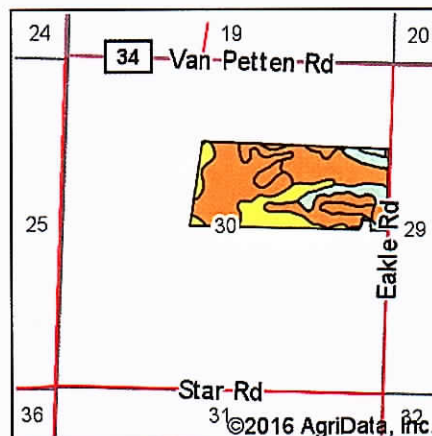
12/6/2016

Soils Map



Soils data provided by USDA and NRCS.

©2016 AgriData, Inc.



State: Illinois
 County: Lee
 Location: 30-20N-8E
 Township: Harmon
 Acres: 92.69
 Date: 12/6/2016

Auction Service
REDIGER
 Wyanet, IL
 815-699-7999

Maps Provided By:



Area Symbol: IL103, Soil Area Version: 11

Code	Soil Description	Acres	Percent of field	II. State Productivity Index Legend	Corn Bu/A	Soybeans Bu/A	Crop productivity index for optimum management
201A	Gilford fine sandy loam, 0 to 2 percent slopes	27.20	29.3%		148	49	110
200A	Orio loam, 0 to 2 percent slopes	21.57	23.3%		147	48	110
102A	La Hogue loam, 0 to 2 percent slopes	13.66	14.7%		162	52	121
**87B	Dickinson sandy loam, 2 to 5 percent slopes	9.73	10.5%		**141	**46	**103
**88B2	Sparta loamy sand, 2 to 7 percent slopes, eroded	5.88	6.3%		**113	**39	**87
727A	Waukee loam, 0 to 2 percent slopes	3.08	3.3%		147	49	109
**689D	Coloma sand, 7 to 15 percent slopes	2.91	3.1%		**95	**30	**71
488A	Hoopole loam, 0 to 2 percent slopes	2.79	3.0%		163	54	121
172A	Hoopeston sandy loam, 0 to 2 percent slopes	2.39	2.6%		147	48	109
**379B2	Dakota sandy loam, 2 to 5 percent slopes, eroded	1.74	1.9%		**143	**47	**106
**689B	Coloma sand, 1 to 7 percent slopes	0.95	1.0%		**101	**32	**75
**88D2	Sparta loamy sand, 7 to 15 percent slopes, eroded	0.79	0.9%		**106	**36	**82
Weighted Average					144.7	47.5	107.8

Area Symbol: IL103, Soil Area Version: 11

Table: Optimum Crop Productivity Ratings for Illinois Soil by K.R. Olson and J.M. Lang, Office of Research, ACES, University of Illinois at Champaign-Urbana. Version: 1/2/2012 Amended Table S2 B811

Crop yields and productivity indices for optimum management (B811) are maintained at the following NRES web site:
<https://www.ideals.illinois.edu/handle/2142/1027/>

** Indexes adjusted for slope and erosion according to Bulletin 811 Table S3

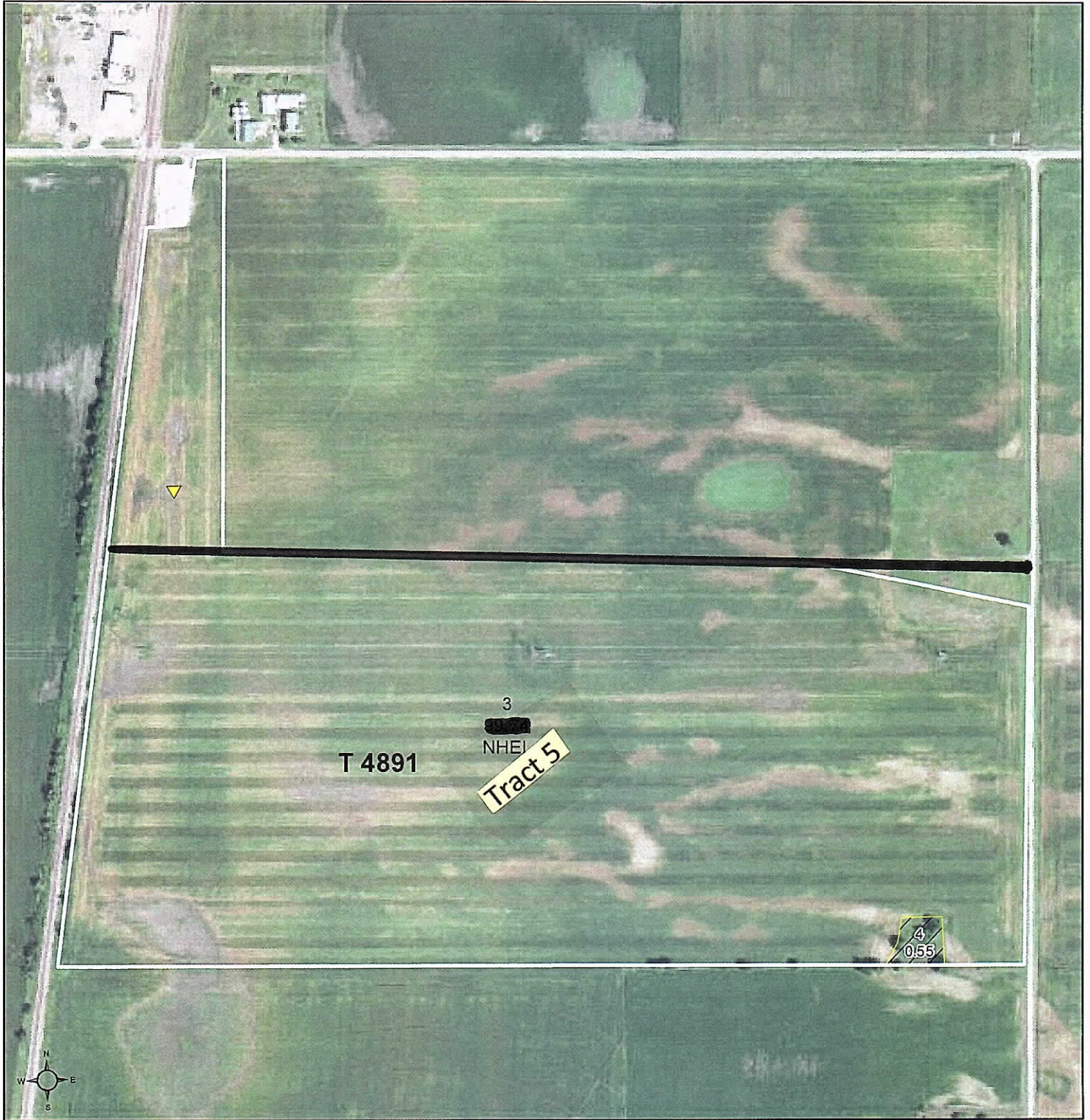
*c: Using Capabilities Class Dominant Condition Aggregation Method

Soils data provided by USDA and NRCS. Soils data provided by University of Illinois at Champaign-Urbana.



United States
Department of
Agriculture

Lee County, Illinois



Common Land Unit

- Non-Cropland
- Cropland

Tract Boundary



2016 Program Year

Map Created January 13, 2016

Wetland Determination Identifiers

- Restricted Use
- Limited Restrictions
- Exempt from Conservation Compliance Provisions

Tract Cropland Total: 99.74 acres

Farm 5351
Tract 4891

United States Department of Agriculture (USDA) Farm Service Agency (FSA) maps are for FSA Program administration only. This map does not represent a legal survey or reflect actual ownership; rather it depicts the information provided directly from the producer and/or National Agricultural Imagery Program (NAIP) imagery. The producer accepts the data 'as is' and assumes all risks associated with its use. USDA-FSA assumes no responsibility for actual or consequential damage incurred as a result of any user's reliance on this data outside FSA Programs. Wetland identifiers do not represent the size, shape, or specific determination of the area. Refer to your original determination (CPA-026 and attached maps) for exact boundaries and determinations or contact USDA Natural Resources Conservation Service (NRCS).

Illinois

U.S. Department of Agriculture

Prepared: 12/6/16 10:09 AM

Lee

Farm Service Agency

Crop Year: 2017

Report ID: FSA-156EZ

Abbreviated 156 Farm Record

Page: 3 of 3

DISCLAIMER: This is data extracted from the web farm database. Because of potential messaging failures in MIDAS, this data is not guaranteed to be an accurate and complete representation of data contained in the MIDAS system, which is the system of record for Farm Records.

Tract Number: 4891 Description: H 1 SEC 30 HARMON TWP

BIA Range Unit Number:

HEL Status: NHEL: no agricultural commodity planted on undetermined fields

Wetland Status: Tract contains a wetland or farmed wetland

WL Violations: None

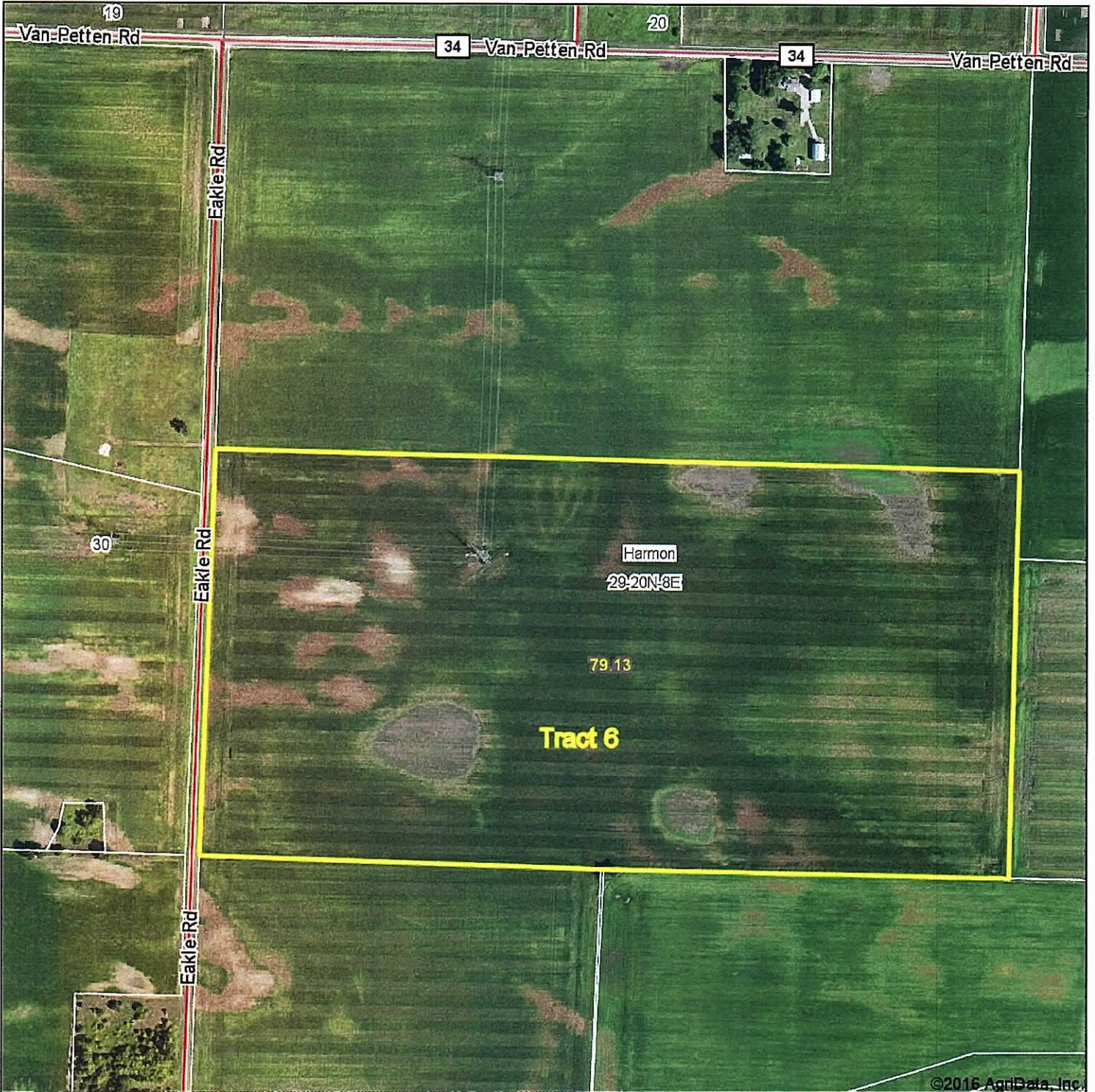
Farmland	Cropland	DCP Cropland	WBP	WRP/EWP	CRP Cropland	GRP
100.29	99.74	99.74	0.0	0.0	0.0	0.0
State Conservation	Other Conservation	Effective DCP Cropland	Double Cropped	MPL/FWP		
0.0	0.0	99.74	0.0	0.0		

Crop	Base Acreage	CTAP Tran Yield	PLC Yield	CCC-505 CRP Reduction
CORN	95.08		123	0.0
SOYBEANS	4.0		38	0.0
Total Base Acres:	99.08			

Owners: EDWARD P MILLER TRUST

Other Producers: None

Aerial Map



Auction Service
REDIGER
Wyanet, IL
815-699-7999

map center: 41° 41' 46.08, -89° 36' 32.1



29-20N-8E
Lee County
Illinois

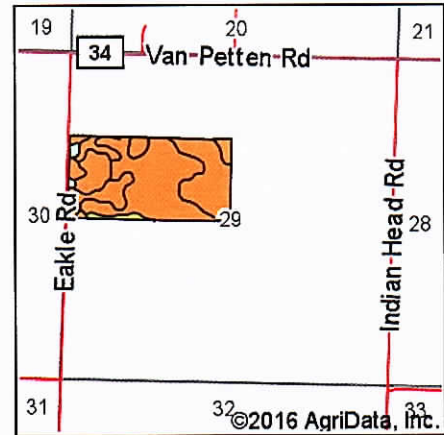
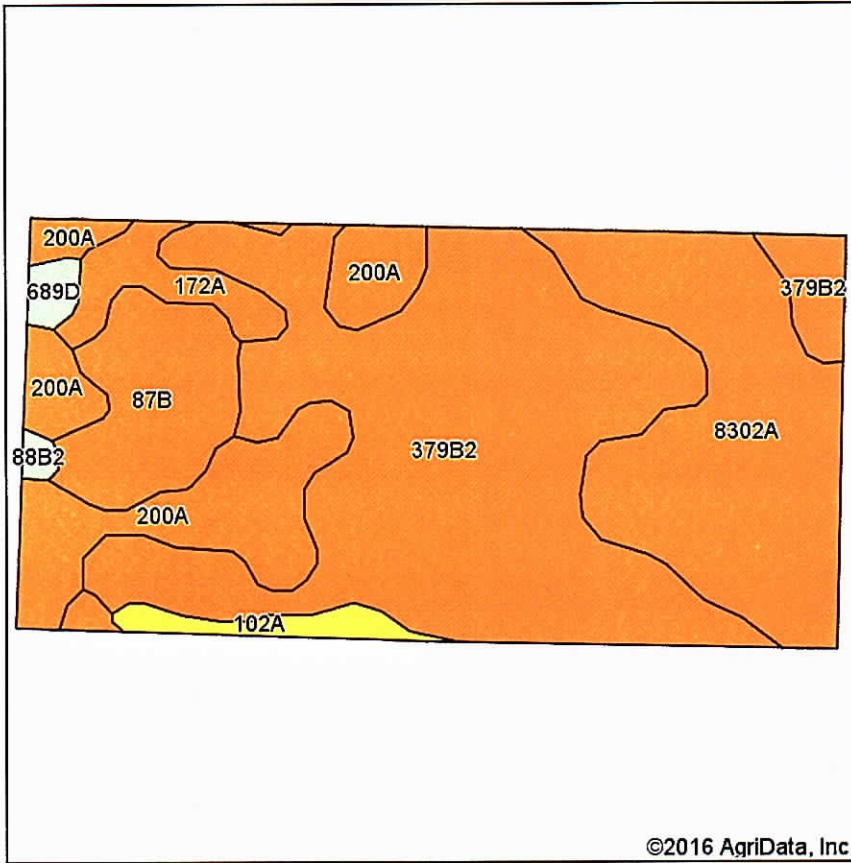


Maps Provided By:
 **surety**
CUSTOMIZED ONLINE MAPPING
© AgriData, Inc. 2016 www.AgriDataInc.com

12/6/2016

Field borders provided by Farm Service Agency as of 5/21/2008. Soils data provided by University of Illinois at Champaign-Urbana.

Soils Map



State: Illinois
 County: Lee
 Location: 29-20N-8E
 Township: Harmon
 Acres: 79.13
 Date: 12/6/2016

Auction Service
REDIGER
Wholesale, Inc.
 815-699-7999

Maps Provided By:



Soils data provided by USDA and NRCS.

Area Symbol: IL103, Soil Area Version: 11

Code	Soil Description	Acres	Percent of field	Il. State Productivity Index Legend	Corn Bu/A	Soybeans Bu/A	Crop productivity index for optimum management
**379B2	Dakota sandy loam, 2 to 5 percent slopes, eroded	36.99	46.7%		**143	**47	**106
8302A	Ambraw loam, 0 to 2 percent slopes, occasionally flooded	18.21	23.0%		154	50	114
200A	Orio loam, 0 to 2 percent slopes	11.51	14.5%		147	48	110
**87B	Dickinson sandy loam, 2 to 5 percent slopes	6.81	8.6%		**141	**46	**103
172A	Hoopeston sandy loam, 0 to 2 percent slopes	2.91	3.7%		147	48	109
102A	La Hogue loam, 0 to 2 percent slopes	1.60	2.0%		162	52	121
**689D	Coloma sand, 7 to 15 percent slopes	0.75	0.9%		**95	**30	**71
**88B2	Sparta loamy sand, 2 to 7 percent slopes, eroded	0.35	0.4%		**113	**39	**87
Weighted Average					145.9	47.7	108.2

Area Symbol: IL103, Soil Area Version: 11

Table: Optimum Crop Productivity Ratings for Illinois Soil by K.R. Olson and J.M. Lang, Office of Research, ACES, University of Illinois at Champaign-Urbana. Version: 1/2/2012 Amended Table S2 B811

Crop yields and productivity indices for optimum management (B811) are maintained at the following NRES web site:

<https://www.ideals.illinois.edu/handle/2142/1027/>

** Indexes adjusted for slope and erosion according to Bulletin 811 Table S3

Soils data provided by USDA and NRCS. Soils data provided by University of Illinois at Champaign-Urbana.

*c: Using Capabilities Class Dominant Condition Aggregation Method



United States
Department of
Agriculture

Lee County, Illinois



Common Land Unit

- Cropland
- Tract Boundary

Wetland Determination Identifiers

- Restricted Use
- Limited Restrictions
- Exempt from Conservation Compliance Provisions



2016 Program Year

Map Created January 13, 2016

Farm **5351**

Tract **1048**

Tract Cropland Total: 79.13 acres

United States Department of Agriculture (USDA) Farm Service Agency (FSA) maps are for FSA Program administration only. This map does not represent a legal survey or reflect actual ownership; rather it depicts the information provided directly from the producer and/or National Agricultural Imagery Program (NAIP) imagery. The producer accepts the data 'as is' and assumes all risks associated with its use. USDA-FSA assumes no responsibility for actual or consequential damage incurred as a result of any user's reliance on this data outside FSA Programs. Wetland identifiers do not represent the size, shape, or specific determination of the area. Refer to your original determination (CPA-026 and attached maps) for exact boundaries and determinations or contact USDA Natural Resources Conservation Service (NRCS).

Illinois
Lee

U.S. Department of Agriculture
Farm Service Agency

FARM: 5351

Prepared: 12/6/16 10:09 AM

Crop Year: 2017

Report ID: FSA-156EZ

Abbreviated 156 Farm Record

Page: 2 of 3

DISCLAIMER: This is data extracted from the web farm database. Because of potential messaging failures in MIDAS, this data is not guaranteed to be an accurate and complete representation of data contained in the MIDAS system, which is the system of record for Farm Records.

Tract Number: 1048 Description: H 1 SEC 29 HARMON TWP SCS PSU

BIA Range Unit Number:

HEL Status: NHEL: no agricultural commodity planted on undetermined fields

Wetland Status: Tract contains a wetland or farmed wetland

WL Violations: None

Farmland	Cropland	DCP Cropland	WBP	WRP/EWP	CRP Cropland	GRP
79.13	79.13	79.13	0.0	0.0	0.0	0.0
State Conservation	Other Conservation	Effective DCP Cropland	Double Cropped	MPL/FWP		
0.0	0.0	79.13	0.0	0.0		

Crop	Base Acreage	CTAP Tran Yield	PLC Yield	CCC-505 CRP Reduction
CORN	75.47		123	0.0
SOYBEANS	3.18		38	0.0
Total Base Acres:	78.65			

Owners: EDWARD P MILLER TRUST

Other Producers: None

Aerial Map



©2016 AgriData, Inc.

Auction Service
REDIGER
Wyanet, IL
815-689-7999

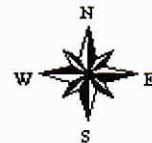
Maps Provided By:

 **surety**
CUSTOMIZED ONLINE MAPPING
© AgriData, Inc. 2016 www.AgriDataInc.com

map center: 41° 40' 1.91, -89° 35' 23.28

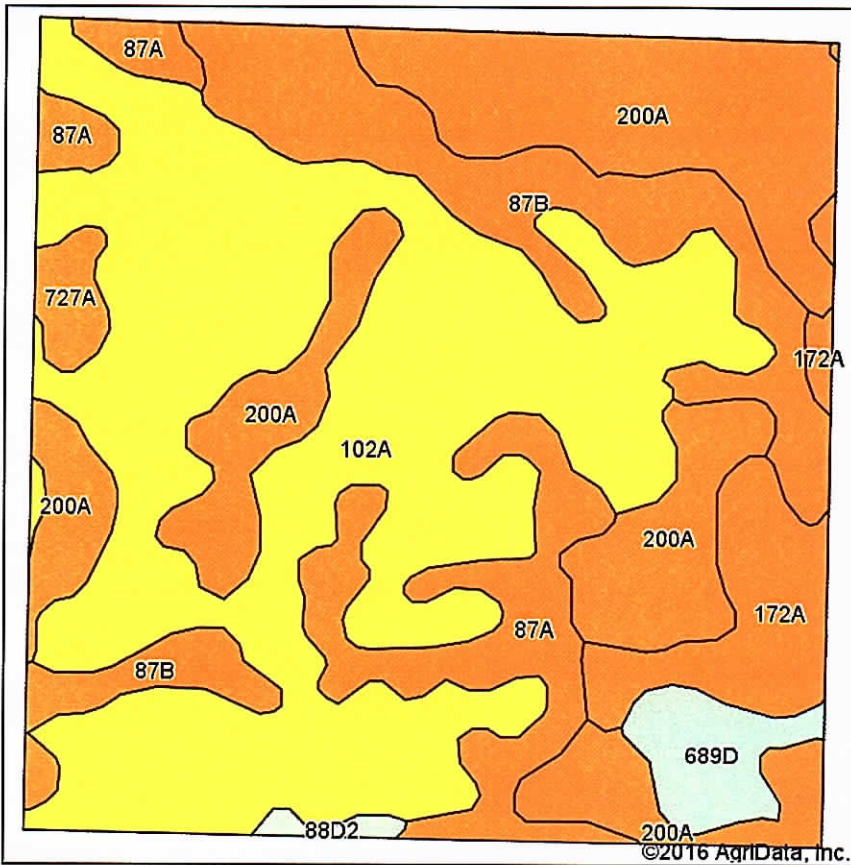
0ft 505ft 1010ft

4-19N-8E
Lee County
Illinois

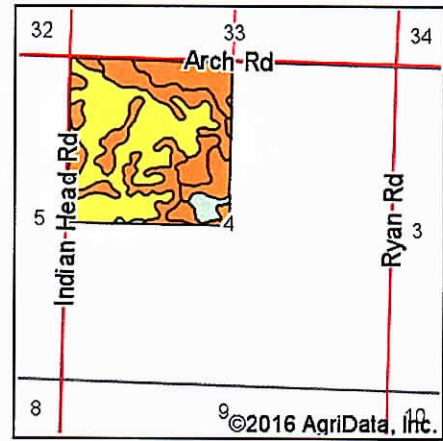


12/6/2016

Soils Map



Soils data provided by USDA and NRCS.



State: **Illinois**
 County: **Lee**
 Location: **4-19N-8E**
 Township: **Hamilton**
 Acres: **155.91**
 Date: **12/6/2016**

Auction Service
REDIGER
 Wyanet, IL
 815-699-7999

Maps Provided By:

 CUSTOMIZED ONLINE MAPPING
 © AgriData, Inc. 2016 www.AgriDataInc.com



Area Symbol: IL103, Soil Area Version: 11

Code	Soil Description	Acres	Percent of field	Il. State Productivity Index Legend	Corn Bu/A	Soybeans Bu/A	Crop productivity index for optimum management
102A	La Hogue loam, 0 to 2 percent slopes	69.37	44.5%		162	52	121
200A	Orio loam, 0 to 2 percent slopes	37.02	23.7%		147	48	110
**87B	Dickinson sandy loam, 2 to 5 percent slopes	19.22	12.3%		**141	**46	**103
87A	Dickinson sandy loam, 0 to 2 percent slopes	14.84	9.5%		142	46	104
172A	Hoopeston sandy loam, 0 to 2 percent slopes	8.45	5.4%		147	48	109
**689D	Coloma sand, 7 to 15 percent slopes	4.35	2.8%		**95	**30	**71
727A	Waukee loam, 0 to 2 percent slopes	2.03	1.3%		147	49	109
**88D2	Sparta loamy sand, 7 to 15 percent slopes, eroded	0.63	0.4%		**106	**36	**82
Weighted Average					150.8	48.8	112.2

Area Symbol: IL103, Soil Area Version: 11

Table: Optimum Crop Productivity Ratings for Illinois Soil by K.R. Olson and J.M. Lang, Office of Research, ACES, University of Illinois at Champaign-Urbana. Version: 1/2/2012 Amended Table S2 B811

Crop yields and productivity indices for optimum management (B811) are maintained at the following NRES web site:

<https://www.ideals.illinois.edu/handle/2142/1027/>

** Indexes adjusted for slope and erosion according to Bulletin 811 Table S3

Soils data provided by USDA and NRCS. Soils data provided by University of Illinois at Champaign-Urbana.

*c: Using Capabilities Class Dominant Condition Aggregation Method

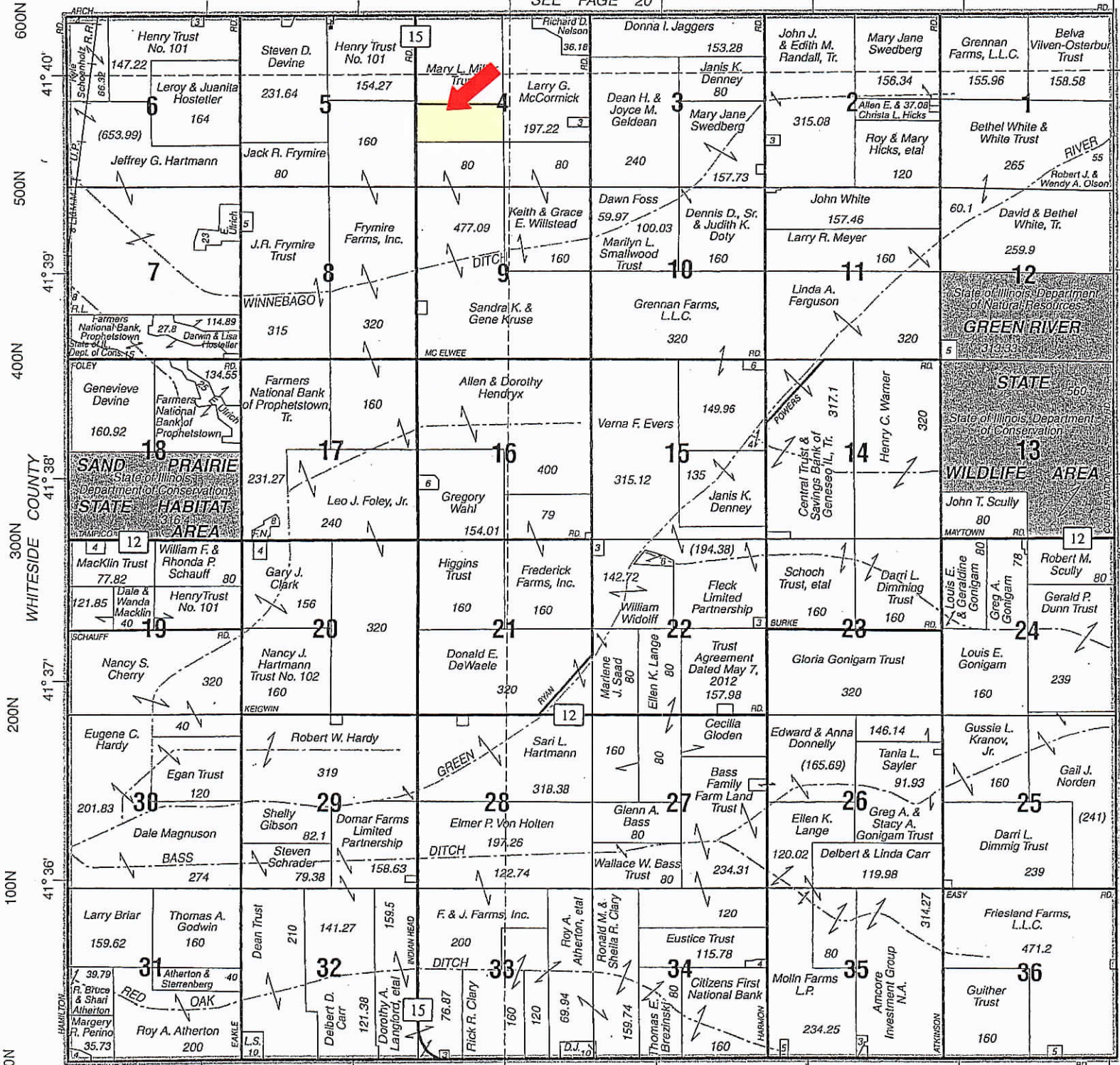
Plat Location

Tract 8

HAMILTON

T.19N.-R.8E.

SEE PAGE 20



Aerial Map



map center: 41° 39' 47.01, -89° 35' 20.44

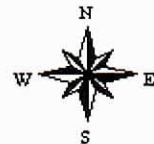


Auction Service
REDIGER
Wyanet, IL
815-699-7999

Maps Provided By:

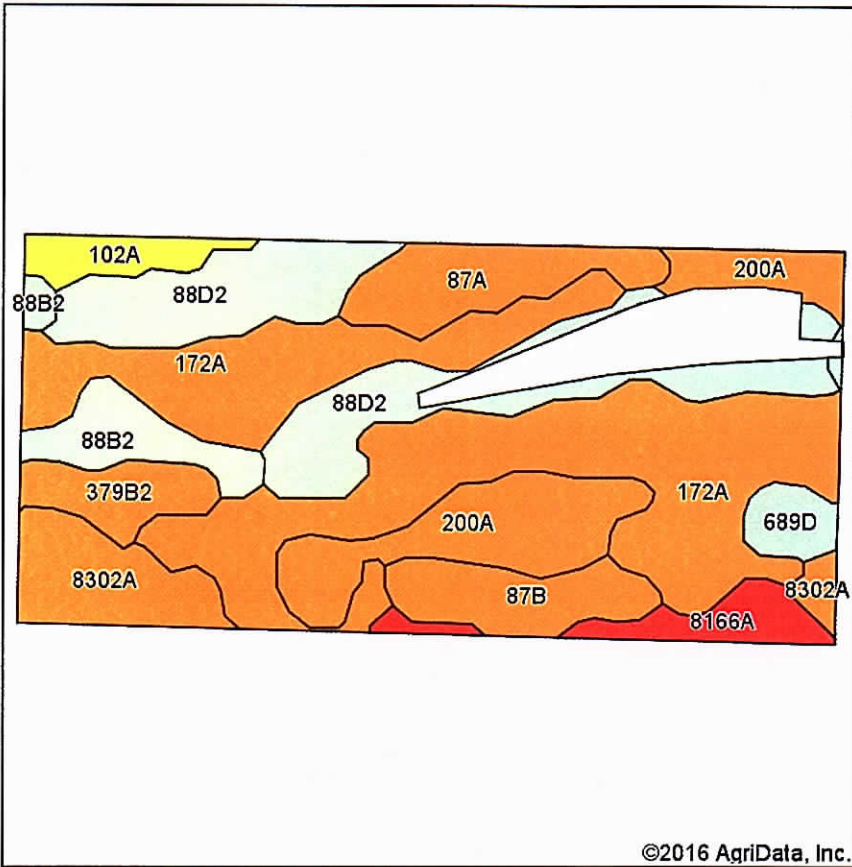
CUSTOMIZED ONLINE MAPPING
© AgriData, Inc. 2016 www.AgriDataInc.com

4-19N-8E
Lee County
Illinois



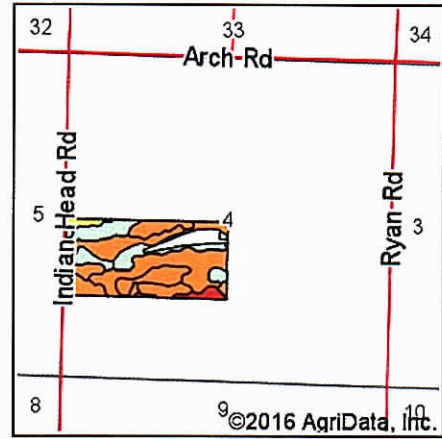
12/6/2016

Soils Map



Soils data provided by USDA and NRCS.

©2016 AgriData, Inc.



State: Illinois
 County: Lee
 Location: 4-19N-8E
 Township: Hamilton
 Acres: 68.21
 Date: 12/6/2016

Auction Service
REDIGER
 Myant, IL
 815-698-7999

Maps Provided By:

 CUSTOMIZED ONLINE MAPPING
 © AgriData, Inc. 2016 www.AgriDataInc.com



Area Symbol: IL103, Soil Area Version: 11

Code	Soil Description	Acres	Percent of field	Il. State Productivity Index Legend	Corn Bu/A	Soybeans Bu/A	Crop productivity index for optimum management
172A	Hoopeston sandy loam, 0 to 2 percent slopes	25.48	37.4%		147	48	109
**88D2	Sparta loamy sand, 7 to 15 percent slopes, eroded	11.41	16.7%		**106	**36	**82
200A	Orio loam, 0 to 2 percent slopes	7.69	11.3%		147	48	110
8302A	Amraw loam, 0 to 2 percent slopes, occasionally flooded	4.59	6.7%		154	50	114
87A	Dickinson sandy loam, 0 to 2 percent slopes	4.09	6.0%		142	46	104
**87B	Dickinson sandy loam, 2 to 5 percent slopes	3.65	5.4%		**141	**46	**103
**88B2	Sparta loamy sand, 2 to 7 percent slopes, eroded	3.16	4.6%		**113	**39	**87
**379B2	Dakota sandy loam, 2 to 5 percent slopes, eroded	2.47	3.6%		**143	**47	**106
8166A	Cohoctah loam, 0 to 2 percent slopes, occasionally flooded	2.44	3.6%		177	60	133
102A	La Hogue loam, 0 to 2 percent slopes	1.76	2.6%		162	52	121
**689D	Coloma sand, 7 to 15 percent slopes	1.47	2.2%		**95	**30	**71
Weighted Average					138.6	45.6	103.5

Area Symbol: IL103, Soil Area Version: 11

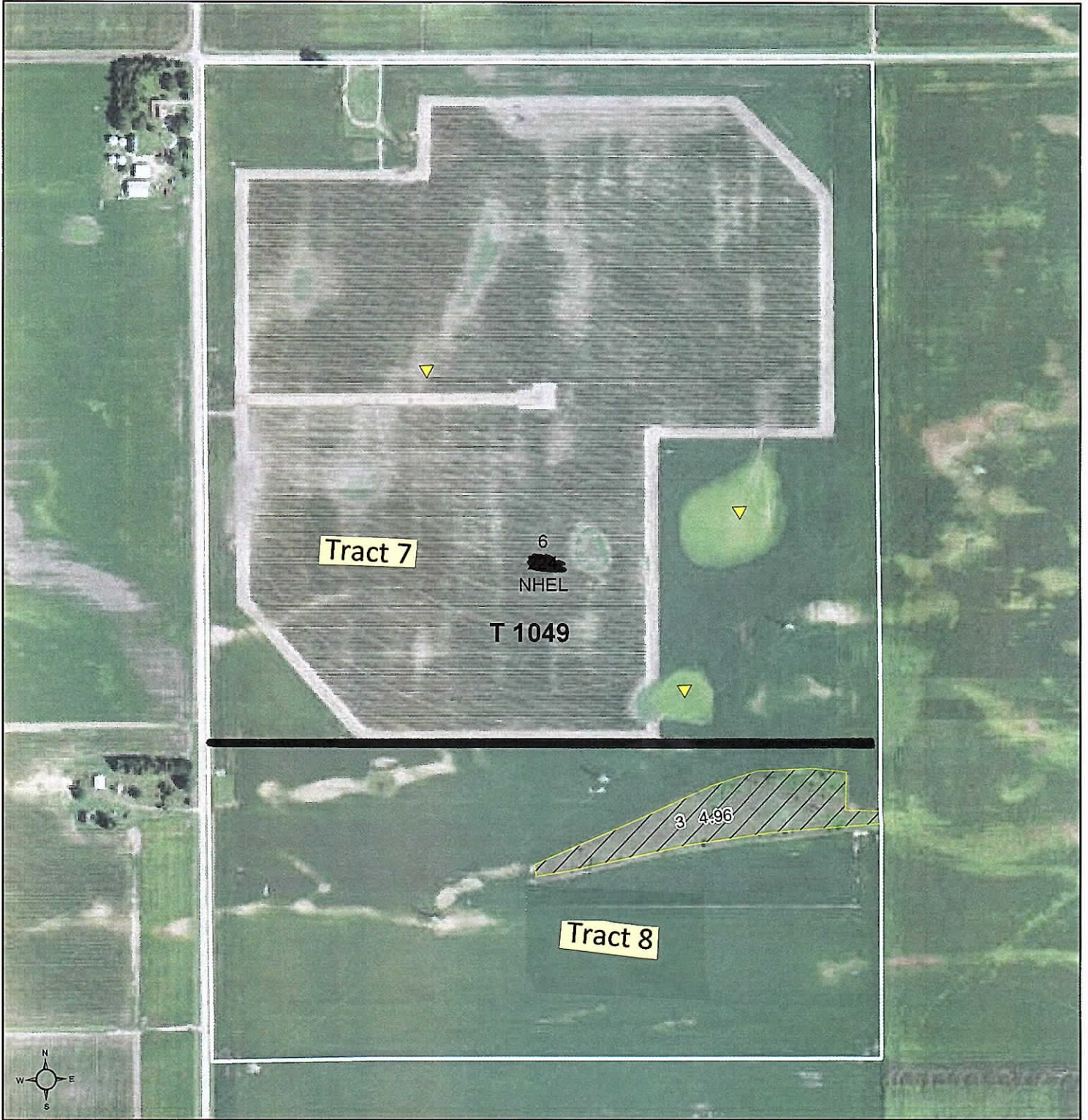
Table: Optimum Crop Productivity Ratings for Illinois Soil by K.R. Olson and J.M. Lang, Office of Research, ACES, University of Illinois at Champaign-Urbana. Version: 1/2/2012 Amended Table S2 B811

Crop yields and productivity indices for optimum management (B811) are maintained at the following NRES web site:
<https://www.ideals.illinois.edu/handle/2142/1027/>

** Indexes adjusted for slope and erosion according to Bulletin 811 Table S3

*c: Using Capabilities Class Dominant Condition Aggregation Method

Soils data provided by USDA and NRCS. Soils data provided by University of Illinois at Champaign-Urbana.



Common Land Unit

- Non-Cropland
- Cropland

Wetland Determination Identifiers

- Restricted Use
- Limited Restrictions
- Exempt from Conservation Compliance Provisions

Tract Boundary



2016 Program Year

Map Created January 13, 2016

Farm 5351
Tract 1049

Tract Cropland Total: 224.00 acres

United States Department of Agriculture (USDA) Farm Service Agency (FSA) maps are for FSA Program administration only. This map does not represent a legal survey or reflect actual ownership; rather it depicts the information provided directly from the producer and/or National Agricultural Imagery Program (NAIP) imagery. The producer accepts the data 'as is' and assumes all risks associated with its use. USDA-FSA assumes no responsibility for actual or consequential damage incurred as a result of any user's reliance on this data outside FSA Programs. Wetland identifiers do not represent the size, shape, or specific determination of the area. Refer to your original determination (CPA-026 and attached maps) for exact boundaries and determinations or contact USDA Natural Resources Conservation Service (NRCS).

Illinois

U.S. Department of Agriculture

FARM: 5351

Lee

Farm Service Agency

Prepared: 12/6/16 10:09 AM

Report ID: FSA-156EZ

Abbreviated 156 Farm Record

Crop Year: 2017

Page: 2 of 3

DISCLAIMER: This is data extracted from the web farm database. Because of potential messaging failures in MIDAS, this data is not guaranteed to be an accurate and complete representation of data contained in the MIDAS system, which is the system of record for Farm Records.

Tract Number: 1049 Description: I 2 SEC 4 HAMILTON TWP

BIA Range Unit Number:

HEL Status: NHEL: no agricultural commodity planted on undetermined fields

Wetland Status: Tract contains a wetland or farmed wetland

WL Violations: None

Farmland	Cropland	DCP Cropland	WBP	WRP/EWP	CRP Cropland	GRP
228.96	224.0	224.0	0.0	0.0	0.0	0.0
State Conservation	Other Conservation	Effective DCP Cropland	Double Cropped	MPL/FWP		
0.0	0.0	224.0	0.0	0.0		

Crop	Base Acreage	CTAP Tran Yield	PLC Yield	CCC-505 CRP Reduction
CORN	213.57		123	0.0
SOYBEANS	9.0		38	0.0
Total Base Acres:	222.57			

Owners: MARY LORRAINE MILLER TRUST

Other Producers: None