

A black and white cow stands in a lush green field under a sunset sky. The cow is the central focus, facing slightly to the right. The background shows rolling hills and a vibrant orange and yellow sunset.

THYEN *Simmentals*

THIRD ANNUAL PRODUCTION SALE

with fellow consignor:

SOLSAA ANGUS

FEBRUARY 18, 2023 @ 1:00

45142 183RD STREET
HAYTI, SOUTH DAKOTA

THIRD ANNUAL PRODUCTION SALE

THYEN
Simmentals



SOLSAA
ANGUS

SCHEDULE

FRIDAY, FEBRUARY 17

All day viewing of cattle at both sites.

THYEN SIMMENTALS

45142 183RD ST. - HAYTI, SD
(3.5 MILES WEST OF KONES KORNER)

SOLSAA ANGUS

45446 187TH ST. - HAYTI, SD
(4 MILES SOUTH & 1/2 EAST OF KONES KORNER)

SATURDAY, FEBRUARY 18

9:00-1:00.....Viewing of bulls at Thyen Simmentals
11:00-1:00.....Complimentary Lunch
1:00.....Sale

LIVE AUCTION

45142 183rd Street - Hayti, South Dakota
{3.5 miles West of Kones Korner on Hwy 81}

CALL IN BIDS

MIKE.....605-520-0575
ERIC.....605-237-0984

SKYLER.....605-237-8820
EVA.....605-881-8998

AUCTIONEER

Jim Thorpe

SALE TERMS & CONDITIONS:

- 1) All cattle will sell under the terms and conditions adopted by the American Simmental Association.
- 2) We guarantee our cattle to be breeders but reserve the right to test any animal that may be returned to us as a non-breeder for one hundred eighty (180) days before making an adjustment. Cattle will be returned at the buyer's expense, and if declared a sound breeder by a competent veterinarian the cattle will be returned to the buyer's ranch at the buyer's expense. In case an adjustment is required, we will provide you a credit equal to the bull's purchase price minus the salvage value.
- 3) Any death or injury after the animal is sold is at the buyer's risk.
- 4) Anyone attending this sale attends at their own risk. Thyen Simmentals, Solsaa Angus, or any of the sale force will not be held responsible for any personal injury while attending this sale.

Bid Online!

This sale will be broadcast live on the internet.



Real time bidding & proxy bidding available.

www.dvauction.com/events/182553

THYEN *Simmentals*



Ron & Dianne Thyen started the family farm in Hayti in 1974



*Mike & Patty Thyen
with their family;
Taylor, Tyler, Kinsley, Suttan & Mary*



*Eva (Thyen) & Tom Engebretson
with boys;
Isaac & Connor*



*Kathryn (Thyen) & Steve Jurens
with their daughters;
Aralyn & Glanna*

Greetings from Thyen Simmentals!

Thank you for your interest in our program and welcome to our 3rd Annual Production Sale. We encourage you to stop by and look at this year's bulls anytime before the sale.

We have a real solid offering of Purebreds and Percentage SimAngus. We will again have ultrasound and scrotal data available sale day. We will also keep the bulls again this year and will semen test them in April and be ready to deliver around May 1st.

A big thank you to all our past and future customers. If you have any questions, feel free to contact us.

You can view our bull sale line up at our family farm.
45142 183rd Street - Hayti, South Dakota
(3.5 miles West of Kones Korner located on Hwy 81)

SOLSAA ANGUS



Skyler, Shae, Stacy & Eric Solsaa

It is with great pleasure that we welcome you to our 3rd Annual Bull Sale.

I purchased my first Angus cows almost 30 years ago. Since then I have sold bulls off the farm and showed cattle at the Watertown Winter Farm Show. Mike Thyen has been my best friend since kindergarten. We have been talking for years to have a sale together and thought it was time. Neither one of us have big numbers of bulls to have our own sale, so it works out well to have it together.

With Thyen Simmentals and Solsaa Angus, both of our futures looking bright. Solsaa Angus strives to raise cattle that will make you money. Our ET program is stronger than ever and allows us to produce more top quality daughters out of our proven cows that have stood the test of time at Solsaa Angus. This year's bulls are the most even group we have raised. From the first bull to the last one in the catalog. These bulls have been developed on a high-quality roughage ration to develop them to the best of their genetic capabilities yet be sound and athletic to go out and work in all the environments.

In the sale catalog Thyen Simmentals will be Lot 1 and 2, Solsaa Angus will be 3 and 4, then 7 and 8, etc. with the prefix SAF. Thyens will sell two bulls, then Solsaa Angus will sell two throughout the sale.

I would highly recommend coming before the sale and look them over at our farm. Skyler, my boy, or I will gladly help with any questions you have. On sale day our bulls will be at Thyen Simmentals for viewing before the sale.

Our farm address for viewing cattle before sale day is
45446 187th Street - Hayti, SD 57241
(4 miles south and 1/2 mile east of Kones Korner on Hwy 81)

THYEN *Simmentals*

45142 183rd St. - Hayti, SD
(3.5 miles West of Kones Korner)

THYEN SIMMENTALS SIRES

TKCC Turnpike 812G
Rubys Turnpike 771E
BBS True Justice B10
CKCC Serena's Cash 0806H ET

OMF Epic E27
WS Pilgrim H182U
Super Tanker

MIKE THYEN
605-520-0575



SOLSAA ANGUS

45417 186th St. - Hayti, SD

**4 miles South & 1/2 mile East
of Kones Korner on Hwy 81**

SOLSAA ANGUS SIRES

Deer Valley Growth Fund

Sitz Barricade 632F

Gar Ashland

SAV Rainfall 6846

SAF Upshot 138

SAF Renown 413

**ERIC SOLSAA
605-237-0984**



1

TSA MR SUPERTANKER K241

Black - 1/2 SM - ASA # 4163580

BD: 3/01/2022

BW: 95

WW: 813



| CE | BW | WW | YW | MILK | MWW | DOC | REA | API | TI |
|-----|-----|------|-------|------|------|-----|------|-------|------|
| 6.6 | 2.9 | 79.4 | 122.1 | 24.5 | 64.1 | 9.9 | 0.64 | 107.6 | 70.7 |

TNT TANKER U263
SSR BULL 44Y
SSR MISS LUCKY T58

SAV HARVESTOR 0338
SAF 614 NICKY HARVESTOR 414
SAF BH DESIGN NICKY 614

*Here is our lead off bull. This Supertanker son sired by Solsaa Angus 414 is a true herd bull.
This is why so many love half bloods.*

2

TSA MR PIKE K215

Black - 1/2 SM - ASA # 4127063

BD: 2/22/2022

BW: 85

WW: 858



*Passing on the beef cattle industry
knowledge 4 generations.*

| CE | BW | WW | YW | MILK | MWW | DOC | REA | API | TI |
|-----|-----|------|-------|------|------|-----|------|-------|------|
| 8.2 | 3.2 | 91.7 | 138.8 | 29.6 | 75.4 | 8.5 | 0.91 | 113.6 | 83.0 |

RUBYS TURNPIKE 771E
TKCC TURNPIKE 812G
FORD RJ DOLLY Y83

G949

Heaviest calf coming off pasture at over 900#. This guy is a tremendous individual that will add performance. He's very docile and this dam will be one to watch.

3

SAF GROWTH FUND 624

AAA # 20541145

BD: 2/2/2022

BW: 96

ADJ 205 WW: 844



| CED | BW | WW | YW | MILK |
|-----|-----|-----|------|------|
| +3 | 3.4 | +79 | +144 | +28 |

BASIN PAYWEIGHT 1682
DEER VALLEY GROWTH FUND
DEER VALLEY RITA 36113

SAV RESOURCE 1441
SAF NICKY RESOURCE 624
SAF BG DESIGN NICKY 614

This is a big, powerful bull to start my sale. He is long bodied and has a thick top. He had a weaning ratio of 105 and goes back to our top cow 614.

SIRE: DEER VALLEY GROWTH FUND

| CED | BW | WW | YW | MILK |
|-----|------|-----|------|------|
| +9 | +1.4 | +91 | +168 | +32 |

Growth Fund really puts growth into his offspring. He will add pounds in your calves.



4

SAF GROWTH FUND 620

AAA # 20541145

BD: 1/28/22

BW: 96

ADJ 205 WW: 849



| CED | BW | WW | YW | MILK |
|-----|-----|-----|------|------|
| +3 | 2.7 | +79 | +143 | +29 |

BASIN PAYWEIGHT 1682
DEER VALLEY GROWTH FUND
DEER VALLEY RITA 36113

SAV ANGUS VALLEY 1867
SAF ANGUS VALLEY QUEEN 620
SAF BULLSEYE QUEEN 317

This guy will catch your eye sale day. He has the properties of a cowmaker supreme to build a herd around. He has maternal strength from three generations back. He has a weaning ratio of 106.

5**TSA MR TURNPIKE K228***Black - 1/2 SM - ASA # 4126882***BD:** 2/25/2022**BW:** 87**WW:** 755

WBF SIGNIFICANT B132
RUBYS TURNPIKE 771E
 RUBYS MISS CLEO 240Z

ROCKIN H MR. BROKER B63
TSA MISS PENNY E7171
 TSA MISS 40X A32

This cow hasn't missed yet. A larger framed bull that I considered showing. Good on paper and good on the ground. This guy will add many good traits!

| CE | BW | WW | YW | MILK | MWW | DOC | REA | API | TI |
|-----|-----|------|-------|------|------|-----|------|-------|------|
| 9.8 | 2.9 | 85.1 | 138.2 | 28.6 | 71.1 | 7.5 | 0.96 | 115.2 | 75.1 |

SIRE: RUBYS TURNPIKE 771E

**6****TSA MR TURNPIKE K220***Black - 3/4 SM - ASA # 4126902***BD:** 2/23/2022**BW:** 88**WW:** 737

WBF SIGNIFICANT B132
RUBYS TURNPIKE 771E
 RUBYS MISS CLEO 240Z

REMINGTON LOCK N LOAD 54U
TSA MISS LOCK 61.4
 61.4

Another Turnpike with performance. Dam side goes back to Lock n Load and Solsaa Angus 61.4. Consistently good with dam having a bull on last year's sale as well.

| CE | BW | WW | YW | MILK | MWW | DOC | REA | API | TI |
|------|-----|------|-------|------|------|-----|------|-------|------|
| 10.0 | 2.6 | 82.8 | 138.0 | 27.4 | 68.8 | 9.0 | 1.02 | 113.9 | 75.7 |

7**SAF BARRICADE 745**

AAA # 20532646

BD: 1/27/2022

BW: 87

ADJ 205 WW: 838



| CED | BW | WW | YW | MILK |
|-----|------|-----|------|------|
| +2 | +3.2 | +76 | +133 | +21 |

SITZ STELLAR 726D
SITZ BARRICADE 632F
 SITZ BARBARAMERE NELL 765D

RAML DISCOVERY 55209
SAF DISCOVERY NICKY 745
 SAF 614 NICKY HARVESTER 413

This guy is a large frame high power growth bull with extra depth and muscle. He will put pounds on your feeder calves and still produce top females. Had a weaning ratio of 104.

SIRE: GAR ASHLAND

| CED | BW | WW | YW | MILK |
|-----|------|-----|------|------|
| +13 | +0.3 | +83 | +142 | +26 |

Gar Ashland is unmatched with his calving ease, growth and muscle.

**8****SAF ASHLAND 2011**

AAA # 20540918

BD: 1/12/2022

BW: 83

ADJ 205 WW: 875



| CED | BW | WW | YW | MILK |
|-----|------|-----|------|------|
| +5 | +2.9 | +82 | +138 | +27 |

GAR EARLY BIRD
GAR ASHLAND
 CHAIR ROCK AMBUSH 1018

SAV PRESIDENT 6847
SAF LADY PRESIDENT 011
 SAF BULLSEYE STAR 618

This guy caught our eye since day one and hasn't stopped yet. He is a massive performance bull with tremendous length capacity and pounds. His maternal grandam raised our high seller last year. Out of a first calf heifer and had a weaning ratio of 109.

9

TSA MR JUSTICE K29

Black - 3/4 SM - ASA # 4127923

BD: 2/19/2022
BW: 78
WW: 778



| CE | BW | WW | YW | MILK | MWW | DOC | REA | API | TI |
|------|-----|------|-------|------|------|------|------|-------|------|
| 13.2 | 0.2 | 86.5 | 130.0 | 29.3 | 72.5 | 12.8 | 0.70 | 136.3 | 85.5 |

BDV TRUE GRIT 11X
BBS TRUE JUSTICE B10
BBS MISS JUSTICE Z7

CCR COWBOY CUT 5048Z
TSA MISS COWBOY F8132
TSA RITA IN FOCUS

Check out BW to YW spread. Add in CE at 13.2 with a weaning weight off pasture of 815. This is a rare bull with this kind of performance, yet numbers that say he could work for heifers. This guy is really nice!

10

TSA MR JUSTICE K232

Black - 3/4 SM - ASA # 4126968

BD: 2/26/2022
BW: 84
WW: 744



| CE | BW | WW | YW | MILK | MWW | DOC | REA | API | TI |
|-----|-----|------|-------|------|------|------|------|-------|------|
| 6.8 | 2.2 | 80.8 | 122.5 | 27.9 | 68.3 | 10.9 | 0.78 | 126.3 | 80.0 |

BDV TRUE GRIL 11X
BBS TRUE JUSTICE B10
BBS MISS JUSTICE Z7

MEYER RANCH 734
TSA MS MEYER G9148
8093

Another dam with another bull on sale. Her True Justice sons have been very solid. She is not a very big cow but has beautiful udder and knows how to bring one home.

J&R Distributing Inc
Lake Norden, SD 57248
800-658-5540



Feeds for all your
livestock needs.



11**SAF ASHLAND 829**

AAA # 20532640

BD: 1/29/2022

BW: 90

ADJ 205 WW: 834



| CED | BW | WW | YW | MILK |
|-----|------|-----|------|------|
| +6 | +2.1 | +69 | +121 | +24 |

GAR EARLY BIRD
GAR ASHLAND
 CHAIR ROCK AMBUSH 1018

SAV RENOWN 3439
SAF RENOWN QUEEN 829
 SAF DENSITY QUEEN 008

Thick, easy fleshing bull with muscle and moderation. Dam is a powerful front pasture cow with a beautiful udder. He had a 104 weaning ratio.

SIRE: GAR ASHLAND

| CED | BW | WW | YW | MILK |
|-----|------|-----|------|------|
| +13 | +0.3 | +83 | +142 | +26 |

Gar Ashland is unmatched with his calving ease, growth and muscle.

**12****SAF ASHLAND 2008**

AAA # 20540916

BD: 1/29/2022

BW: 60

ADJ 205 WW: 814



| CED | BW | WW | YW | MILK |
|-----|------|-----|------|------|
| +15 | -1.7 | +69 | +118 | +26 |

GAR EARLY BIRD
GAR ASHLAND
 CHAIR ROCK AMBUSH 1018

PVF INSIGHT 0129
SAF NICKY INSIGHT 008
 SAF NICKY HARVESTER 413

Unique, low birth weight bull that is stylish nice little head and smooth made with a calving ease design. One of the best calving ease bulls we have raised. He had a birth ratio of 79 and a weaning ration of 101. Out of a first calf heifer.

13

TSA MR JUSTICE K217

Black - PB SM - ASA # 4126947

BD: 2/22/2022

BW: 85

WW: 790



| CE | BW | WW | YW | MILK | MWW | DOC | REA | API | TI |
|-----|-----|------|-------|------|------|------|------|-------|------|
| 9.1 | 2.3 | 91.1 | 140.7 | 29.4 | 74.9 | 13.9 | 0.86 | 137.8 | 87.5 |

BDV TRUE GRIT 11X
BBS TRUE JUSTIC B10
 BBS MISS JUSTICE Z7

SFG THE JUDGE D633
TSA MS GUDGE G917
 TSA MISS S2 Y1032

Another True Justice son with good numbers across the board. Dam goes back to Cowboy Cut. That cross has produced well for us.

14

TSA MR CASH K214

Black - 3/4 SM - ASA # 4127922

BD: 2/22/2022

BW: 94

WW: 795



| CE | BW | WW | YW | MILK | MWW | DOC | REA | API | TI |
|-----|-----|------|-------|------|------|-----|------|-------|------|
| 6.6 | 4.8 | 89.1 | 125.6 | 22.9 | 67.5 | 7.1 | 0.88 | 105.3 | 76.6 |

SWSN CASH FLOW 81E
CKCC SERENA'S CASH 0806H ET
 HF SERENA

ROCKIN H MR. BROKER B63
TSA MS BROKER G9225
 TSA MS C5109

Real performance calf out of new herd sire Cash purchased from CKCC at BHSS. We really like what we see so far. Jump on board here!

15

SAF BARRICADE 847

AAA # 20532641

BD: 1/28/2022
BW: 90
ADJ 205 WW: 849



| CED | BW | WW | YW | MILK |
|-----|------|-----|------|------|
| -2 | +3.4 | +74 | +123 | +23 |

SITZ STELLAR 726D
SITZ BARRICADE 632F
SITZ BARBARAMERE NELL 765D

KOUPALS B+B FT KNOX 4122
SAF FORT KNOX STAR 847
SAF MOCO STAR 914

*This guy has been another standout since birth with a big frame and a deep side.
This is Barricade's son you won't want to miss.*

16

SAF GROWTH FUND 301

AAA # 20541152

BD: 1/26/2022
BW: 83
ADJ 205 WW: 808



| CED | BW | WW | YW | MILK |
|-----|------|-----|------|------|
| +9 | +0.9 | +74 | +133 | +28 |

BASIN PAY WEIGHT 1682
DEER VALLEY GROWTH FUND
DEER VALLEY RITA 36113

SAV FINAL ANSWER 0035
SAF FINAL ANSWER ERICA 301
SAV ERICA 1108

Calving ease bull with thickness, muscle and growth. His massive deep bodied dam goes back to a cow we purchased and continues to produce for us. Dam has a weaning ratio of 7 calves at 103.

17

TSA MR MP K289

Black - 3/4 SM - ASA # 4126914

BD: 3/16/2022

BW: 95

WW: 852



| CE | BW | WW | YW | MILK | MWW | DOC | REA | API | TI |
|-----|-----|------|-------|------|------|------|------|-------|------|
| 5.8 | 5.2 | 95.4 | 147.4 | 26.0 | 73.6 | 10.0 | 0.95 | 114.1 | 81.2 |

RUBYS TURNPIKE 771E
TKCC TURNPIKE 812G
FORD FJ DOLLY Y83

PTK SILVERKING Z240
TSA MS SILVERKING C44
D859

Here is another son out of C44 who might be one of the most consistent cows we have. He is a tremendous calf that adj 205, was 852#. Our Turnpike son herd sire 812G and on dam's side goes back to Dahl's Angus - Tremendous SimAngus bull.

18

TSA HERDSMAN K229

Black - 1/2 SM - ASA # 4134390

BD: 2/25/2022

BW: 89

WW: 725



| CE | BW | WW | YW | MILK | MWW | DOC | REA | API | TI |
|----|----|----|----|------|-----|-----|-----|-----|----|
|----|----|----|----|------|-----|-----|-----|-----|----|

SWSN CASH FLOW 81E
CKCC SERENA'S CASH 0806H ET
HF SERENA

TSA MS WP

Another son from herd sire Cash. They do a lot of things right. His first daughters will calve this year.



CASTLEWOOD FARMERS ELEVATOR

**Offer's Great Feed/Seed/Fertilizer
Services**

To Make Your Farm Goals Achievable!



Follow Us On Facebook!
Contact Us: (605)793-2192

19

SAF SOLSAA UPSHOT 919

AAA # 20532642

BD: 1/24/2022
BW: 92
ADJ 205 WW: 758



| CED | BW | WW | YW | MILK |
|-----|------|-----|------|------|
| +4 | +2.7 | +57 | +113 | +26 |

EXAR UPSHOT 05628
SAF UPSHOT 138
SAF K THUNDER QUEEN 138

HF TIGER ST
SAF BLACK BIRD TIGER 919
BUSH BLACK BIRD BELLE 5404

Easy fleshing big top bull that goes back to our bull that was the Supreme Row Champion at the Watertown Winter Farm Show in 2015

20

SAF GROWTH FUND 201

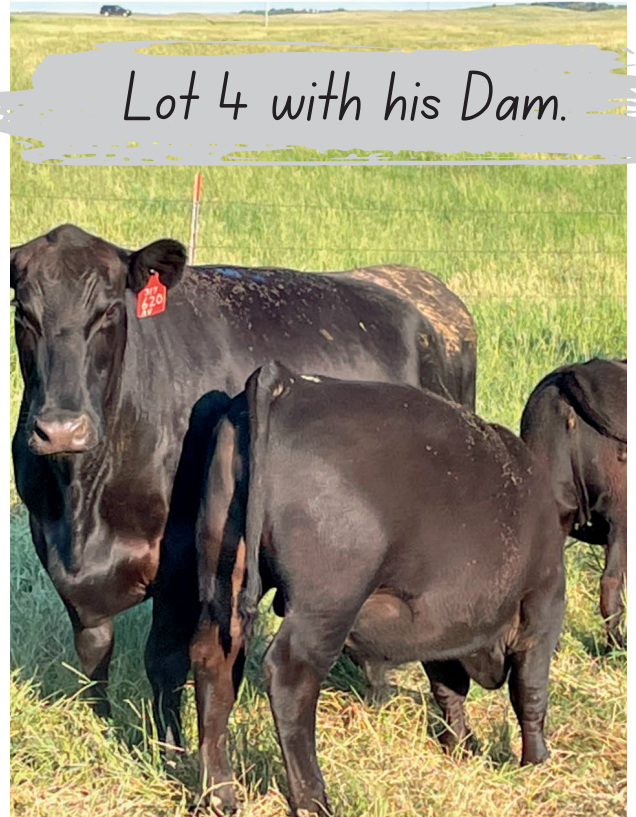
AAA # 20541155

BD: 1/25/2022
BW: 78
ADJ 205 WW: 761

BASIN PAYWEIGHT 1682
DEER VALLEY GROWTH FUND
DEER VALLEY RITA 36113

SAV IRON MOUNTAIN 8066
STASSENS BLUEBLOOD LADY 1A
STASSENS BLUEBLOOD LADY 4H

| CED | BW | WW | YW | MILK |
|-----|------|-----|------|------|
| +9 | +0.5 | +63 | +117 | +21 |



This guy's ears got ripped at birth on a cold morning, but he is a big growth bull out of a good mother that raises a good calf every year.

21

TSA MR EPIC K2123

Black - PB SM

BD: 3/17/2017
BW: 96
WW: 763



| CE | BW | WW | YW | MILK | MWW | DOC | REA | API | TI |
|------|-----|------|-------|------|------|------|------|-------|------|
| 13.5 | 0.0 | 71.4 | 108.0 | 18.6 | 54.2 | 11.0 | 1.02 | 124.0 | 73.3 |

REMINGTON ON TARGET 2S
OMF EPIC E27
BAR15 MISS KNIGHT 78E-51G

LOCK N LOAD
E766
SKITTLES

Will sell this fancy Epic son as a commercial bull. We could get papers if needed.
This guy is packed full of muscle with style.

22

TSA MR PIKE K272

Black - PB SM - ASA # 4126956

BD: 3/11/2022
BW: 80
WW: 759

RUBYS TURNPIKE 771E
TKCC TURNPIKE 812G
FORD RJ DOLLY Y83

WS ALL-AROUND Z35
TSA MS GERT G938
TSA MISS ELLA RIGHT E760

Another son out of Thyen Pike our herd sire.
Out of a dam by WS All Around, which helps his
numbers be all around good!



Our cattle make great 4-H projects!

| CE | BW | WW | YW | MILK | MWW | DOC | REA | API | TI |
|-----|-----|------|-------|------|------|------|------|-------|------|
| 9.9 | 2.4 | 89.1 | 133.5 | 23.6 | 68.1 | 10.0 | 1.02 | 137.7 | 85.3 |

Blueprint[®]

NUTRITION PROGRAM

Blueprint[®] is a premium nutrition program designed to build on genetic potential.

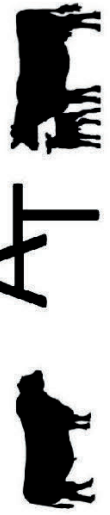
- Utilizes Total Replacement Technology including Bioplex[®] and Sel-Plex[®]
- Easily absorbed and readily metabolized
- Maximizes reproductive performance
- Optimizes animal health



HUBBARD

an **Agri-Tech** company

Agri-Tech



For more information, contact:

Agri-Tech

Watertown, SD: 605-882-7015

Brookings, SD: 605-692-0995



23

SAF GROWTH FUND 401

AAA # 20541149

BD: 1/26/2022

BW: 83

ADJ 205 WW: 743

| | | | | |
|------------|-----------|-----------|-----------|-------------|
| CED | BW | WW | YW | MILK |
| +7 | +1.7 | +67 | +123 | +24 |

BASIN PAYWEIGHT 1682
DEER VALLEY GROWTH FUND
DEER VALLEY RITA 36113

SAV PRIORITY 7283
SAF BLUEBLOOD 401
STASSENS BLUEBLOOD LADY 1A



A really correct long bodied bull with a cool look. These Growth Fund bulls will add pounds to your calves.



SIRE: SITZ BARRICADE 632F

| | | | | |
|------------|-----------|-----------|-----------|-------------|
| CED | BW | WW | YW | MILK |
| +2 | +3.3 | +79 | +137 | +22 |

This Barricade bull was the sire of my high sellers last year.

24

SAF BARRICADE 627

AAA # 20532645



BD: 2/5/2022

BW: 95

ADJ 205 WW: 775

| | | | | |
|------------|-----------|-----------|-----------|-------------|
| CED | BW | WW | YW | MILK |
| +1 | +4.1 | +71 | +123 | +22 |

SITZ STELLAR 726D
SITZ BARRICADE 632F
SITZ BARBARAMERE NELL 765D

SAV RESOURCE 1441
SAF ANGELINA RESOURCE 627
SAF IM ANGELINA 805

Your last chance for a Barricade son. He goes back to a really good cow family. Expect him to sire market top feeder calves.

**2022
HAPPY
BUYERS**

SAF BARRICADE 1602 SOLSAA ANGUS

SAF BARRICADE 1602



BD: 1/23/2021

BW: 78

ADJ 205 WW: 926

IMF: 4.3

RIB: 14 INCHES

CED

+9

BW

+0.4

WW

+78

YW

+138

MILK

+15

We are excited about this Barricade son we sold last year to Keith Smith from Lake Norden. We got him collected last spring. On his first jump he froze 320 straws. Every day he just gets better looking and calving ease to boot. We will use him hard this spring. Look for his offspring in future sales.

If interested in purchasing semen, let us know.

SEMEN AVAILABLE

**ONLY
\$25**

Eric Solsaa 605-237-0984

25

TSA MR PILGRIM K2104

Red - PB SM - ASA # 4134385

BD: 3/18/2022

BW: 95

WW: 838



| CE | BW | WW | YW | MILK | MWW | DOC | REA | API | TI |
|------|-----|------|-------|------|------|------|------|------|------|
| 10.2 | 2.8 | 81.2 | 114.0 | 22.7 | 63.3 | 10.3 | 0.82 | 98.7 | 70.2 |

CNS DREAM ON L186
WS PILGRIM H182U
WS MARLA 276M

PVF PREFERRED EDGE 717G
KAPPES SADIE M166
KAPPES STOP LIGHT J35

*RED BULL ALERT! This guy has been a standout since birth.
Dark red and really good. Kappes Sadie M166 needs no intro, so help yourself here!*

26

TSA MR PILGRIM K2122

Red - PB SM - ASA # 4134386

BD: 3/24/2022

BW: 90

WW: 805



| CE | BW | WW | YW | MILK | MWW | DOC | REA | API | TI |
|------|-----|------|-------|------|------|------|------|------|------|
| 10.2 | 2.8 | 81.2 | 114.0 | 22.7 | 63.3 | 10.3 | 0.82 | 98.7 | 70.2 |

CNS DREAM ON L186
WS PILGRIM H182U
WS MARLA 276M

PVF PREFERRED EDGE 717G
KAPPES SADIE M166
KAPPES STOP LIGHT J35

*Full brother to Lot 25. Another Red that would be an awesome co-pilot with his brother in pasture.
Both went over 800# on adj 205.*

27

SAF ASHLAND 943

AAA # 20532644

BD: 2/7/2022

BW: 78

ADJ 205 WW: 756

| CED | BW | WW | YW | MILK |
|-----|------|-----|------|------|
| +9 | +0.8 | +82 | +137 | +26 |

GAR EARLY BIRD
GAR ASHLAND
 CHAIR ROCK AMBUSH 1018
 KROUPALS B+B FT KNOX 4122
SAF QUEEN KFK 943
 SAF QUEEN HARVESTER 423

Another calving ease bull that is correct and eye-catching.

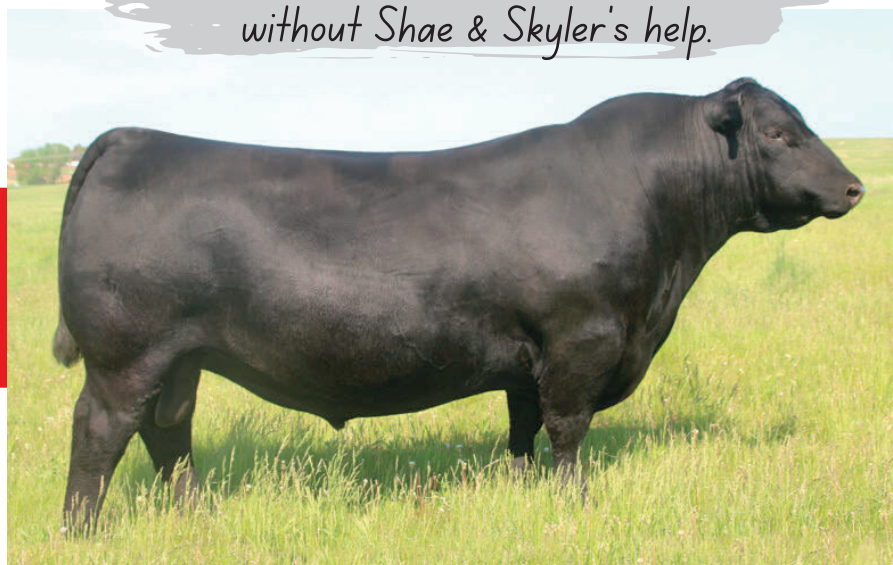
SIRE: SAV RAINFALL 6846

| CED | BW | WW | YW | MILK |
|-----|-------|-----|------|------|
| +7 | +0.04 | +56 | +107 | +27 |

This Rainfall bull is a calving ease sire from Schaff Angus Valley. He sires added length. Soundness and his daughters are stunning.



We wouldn't be able to do this without Shae & Skyler's help.



28

SAF RAINFALL 2023

AAA # 20532655

BD: 1/9/2022

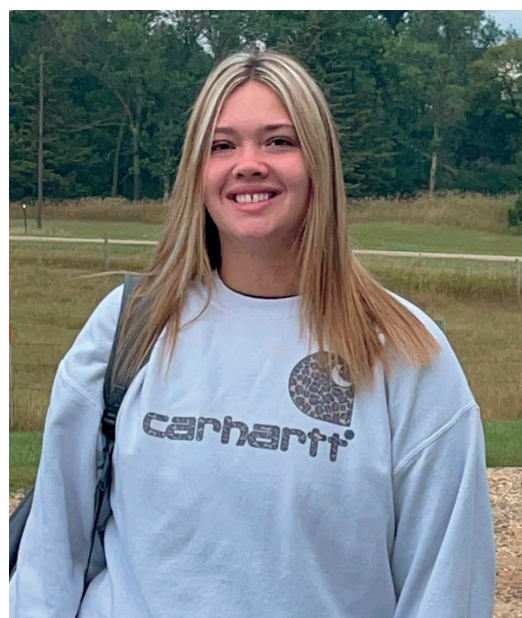
BW: 74

ADJ 205 WW: 762

| CED | BW | WW | YW | MILK |
|-----|------|-----|------|------|
| +8 | +0.6 | +58 | +107 | +25 |

COLEMAN CHARLO 0256
SAV RAINFALL 6846
 SAV BLACKCAP MAY 4136
 LD CAPITALIST 316
SAF CAPITALIST NICKY 023
 SAF DISCOVERY NICKY 745

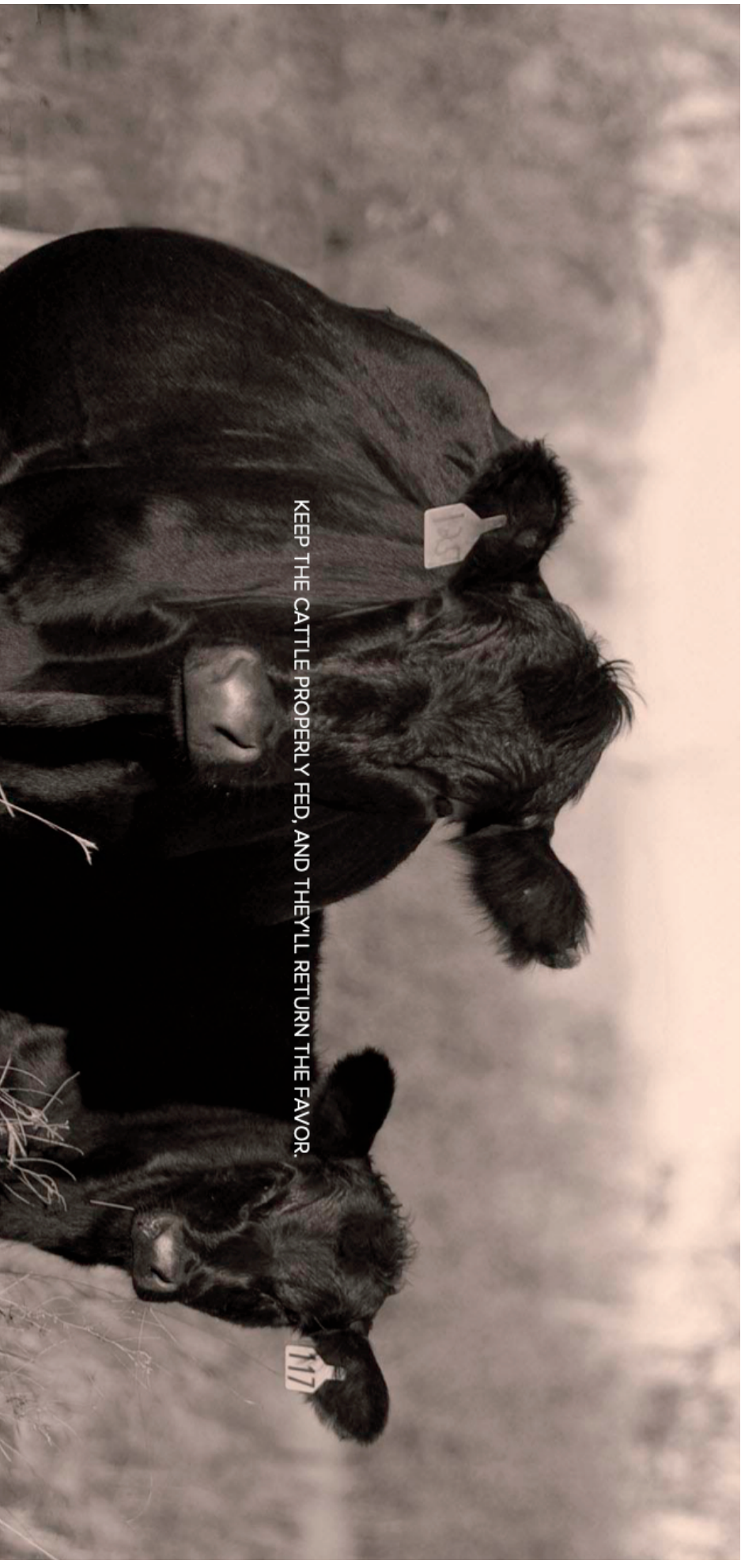
This long body, deep rib bull gets out and moves really good. Calving ease with only a 74 pound birth weight. His grandam is the dam of lot 7.



HAMLIN COUNTY
HCFCC
FARMERS COOP

HAYTI.....605-783-3621
HAZEL.....605-628-2927
LAKE NORDEN....650-785-3401

WWW.HAYTIHCFCC.COM



KEEP THE CATTLE PROPERLY FED, AND THEY'LL RETURN THE FAVOR.

PAYBACK[®]

29

TSA MR PILGRIM K2127

Black - PB SM - ASA #4134384

BD: 3/25/2022
BW: 98
WW: 847



| CE | BW | WW | YW | MILK | MWW | DOC | REA | API | TI |
|------|-----|------|-------|------|------|------|------|------|------|
| 10.2 | 2.8 | 81.1 | 113.9 | 22.7 | 63.2 | 10.3 | 0.81 | 98.7 | 70.1 |

CNS DREAM ON L186
WS PILGRIM H182U
WS MARLA 276M

PVF PREFERRED EDGE 717G
KAPPES SADIE M166
KAPPES STOP LIGHT J35

Another brother to lots 25 & 26. This guy is another good one to add to the consistency of this dam and this breeding 847# 205 weight.

30

TSA MR PILGRIM 223

Black - 1/2 SM - ASA # 4163584

BD: 2/23/2022
BW: 89
WW: 796



| CE | BW | WW | YW | MILK | MWW | DOC | REA | API | TI |
|-----|-----|------|------|------|------|------|------|-------|------|
| 9.1 | 2.7 | 69.4 | 98.6 | 19.0 | 70.7 | 10.6 | 0.65 | 117.6 | 69.9 |

WS PILGRIM H182U
TSA MR. PILGRIM E7112
BRANT MACHO MAE U215M

G9101

This thick rascal is out of one of our herd bulls called Mr. Pilgrim.

31

SAF 413 RENOWN 914

AAA # 20542030

BD: 2/24/2022

BW: 78

ADJ 205 WW: 734



| CED | BW | WW | YW | MILK |
|-----|------|-----|------|------|
| +6 | +1.7 | +59 | +107 | +27 |

SAV RENOWN 3439
SAF RENOWN 413
 SAF 614 NICKY HARVESTER 413
 HF TIGER 57
SAF NICKY TIGER 914
 SAF 614 NICKY HARVESTER 413

*Thick powerful bull that's easy fleshing.
 Dam has a great udder and small teats.*

SIRE: SAF RENOWN 413

| CED | BW | WW | YW | MILK |
|-----|------|-----|------|------|
| +2 | +2.6 | +62 | +111 | +24 |

The Renown bull we sold to Chad Schooley. We really liked him and used him in our own program. He sires calves with extra shape and muscle with high maternal built in. Dam is still in our herd producing great offspring at 9 years of age with a weaning ratio of 6 calves at 103.



32

SAF 413 RENOWN 925

AAA # 20532643

BD: 2/26/2022

BW: 85

ADJ 205 WW: 731



| CED | BW | WW | YW | MILK |
|-----|------|-----|------|------|
| +3 | +2.4 | +54 | +101 | +24 |

SAV RENOWN 3439
SAF RENOWN 413
 SAF 614 NICKY HARVESTER 413
 HF TIGER 5T
SAF QUEEN TIGER 925
 SAF QUEEN FT KNOX 637

*This is the youngest bull in the sale for us.
 Just really clean, correct and sharp looking.
 Goes back to a real good cow family.*

33

TSA MR EPIC K278

Black - PB SM - ASA # 4126965

BD: 3/13/2022

BW: 88

WW: 796



| CE | BW | WW | YW | MILK | MWW | DOC | REA | API | TI |
|------|-----|------|-------|------|------|------|------|-------|------|
| 11.2 | 2.0 | 91.6 | 141.0 | 20.5 | 66.3 | 13.1 | 0.97 | 126.5 | 82.3 |

WS ALL-AROUND Z35
OMF EPIC E27
 OMF TIME LESS B100

REMINGTON LOCK N LOAD 54U
TSA MS ROSELOCK H083
 HARVIE DAKOTA ROSE 11Z

OMF Epic son that checks a lot of boxes. Very good numbers, almost 800# at 205, and dam is daughter of the famous 112 Dakota Rose and Lock n Load!

34

TSA MR TREASURE K256

Black - 1/4 SM & 3/4 AN - ASA # 4126941

BD: 3/6/2022

BW: 90

WW: 850



| CE | BW | WW | YW | MILK | MWW | DOC | REA | API | TI |
|------|-----|------|-------|------|------|------|------|-------|------|
| 11.7 | 1.5 | 96.9 | 155.1 | 22.3 | 70.7 | 11.2 | 0.35 | 138.0 | 93.4 |

V A R DISCOVER 2240
MGR TREASURE
 SJH IMPRESSION OF 6108 1614

ROCKIN H MR. BROKER B63
TSA MR. BROKER H0223
 TSA MISS B434

Real cowboy type of bull. High docility and lots of growth and performance.

35

SAF 413 RENOWN 923



BD: 2/25/2022
BW: 83
ADJ 205 WW: 782

COMMERCIAL BULL

A commercial bull that is a good power bull with lots of muscle and shape.

SIRE: SAF RENOWN 413

AAA #: 19273298

| CED | BW | WW | YW | MILK |
|-----|------|-----|------|------|
| +2 | +2.6 | +62 | +111 | +24 |

A bull we raised and Chad Schooley purchased in 2019 from the Watertown Winter Farm Show. He is a bull we really like and continue to use him in our production line.
Sire of Lots 31, 32 & 35



36

SAF 906 UPSHOT



BD: 1/30/2022
BW: 85
ADJ 205 WW: 862

COMMERCIAL BULL

Commercial bull that is a really thick rascal. Dam is a really good cow that's easy fleshing. Sire was the 2015 Supreme Champion at the Watertown Winter Farm Show.

37

TSA MR PIKE K265

Black - PB SM - ASA # 4126928

BD: 3/9/2022

BW: 88

WW: 766



RUBYS TURNPIKE 771E
TKCC TURNPIKE 812G
FORD RJ DOLLY Y83

BBS TRUE JUSTICE B10
TSA MISS FRANCINE F813
TSA MISS ND B04

We believe in the future of the cattle industry.

*Another son by Thyen Pike herd bull.
These cattle have been trouble free.
First daughters also look promising.*

| CE | BW | WW | YW | MILK | MWW | DOC | REA | API | TI |
|-----|-----|------|-------|------|------|------|------|-------|------|
| 7.5 | 3.4 | 88.3 | 134.7 | 25.2 | 69.4 | 10.9 | 1.08 | 133.0 | 83.9 |

GRAND-SIRE:
RUBY'S TURNPIKE 771C



38

TSA MR PIKE K2121

Black - 1/2 SM - ASA # 4126934

BD: 3/23/2022

BW: 80

WW: 763



RUBYS TURNPIKE 771E
TKCC TURNPIKE 812G
FORD RJ DOLLY Y83

TL NORTH STAR
TSA MS STAR G9275
TSA MISS TANK B36

Dam side of this Thyen Pike son goes back to Super Tanker, so no surprise she knows how to raise a calf.

| CE | BW | WW | YW | MILK | MWW | DOC | REA | API | TI |
|-----|-----|------|-------|------|------|-----|------|-------|------|
| 7.6 | 3.2 | 81.0 | 122.1 | 22.5 | 63.0 | 96 | 0.97 | 110.2 | 72.6 |

**MARK
YOUR
CALENDARS**

TUESDAY, FEBRUARY 23

SAF ASHLAND 2717

AAA# 20504608

Solsaa Angus is excited about this bull entered into the Nebraska Cattlemen's Classic in Kearney, Nebraska.



BD: 2/1/2022

BW: 83

ADJ 205 WW: 810

| CED | BW | WW | YW | MILK |
|------------|-----------|-----------|-----------|-------------|
| +11 | +0.4 | +65 | +115 | +25 |

GAR EARLY BIRD
GAR ASHLAND
CHAIR ROCK AMBUSH 1018

SAV ANGUS VALLEY 1867
SAF ANGUS VALLEY ANGEL 717
SAF DENSITY ANGELINA 214

This calving ease bull has a great side profile and genetics to back him up.



NEBRASKA CATTLEMENS CLASSIC

<https://nebraskaclassic.org/winter-edition/index.php>

Contact Eric for more information at 605-237-0984.

39

TSA MR RIGHT K2110

Black - PB SM - ASA # 4163582

BD: 3/19/2022
BW: 70
WW: 750



| CE | BW | WW | YW | MILK | MWW | DOC | REA | API | TI |
|-----|-----|------|-------|------|------|-----|------|-------|------|
| 8.3 | 3.5 | 83.5 | 132.3 | 20.9 | 62.6 | 9.9 | 0.81 | 112.6 | 74.1 |

WELSHS DEW IT RIGHT067T
ES RIGHT TIME FA110-74
ES A110

HARVIE JDFWALLBANGER111X
HARVIE DAKOTA ROSE 11Z
WS DAKOTA ROSE M86

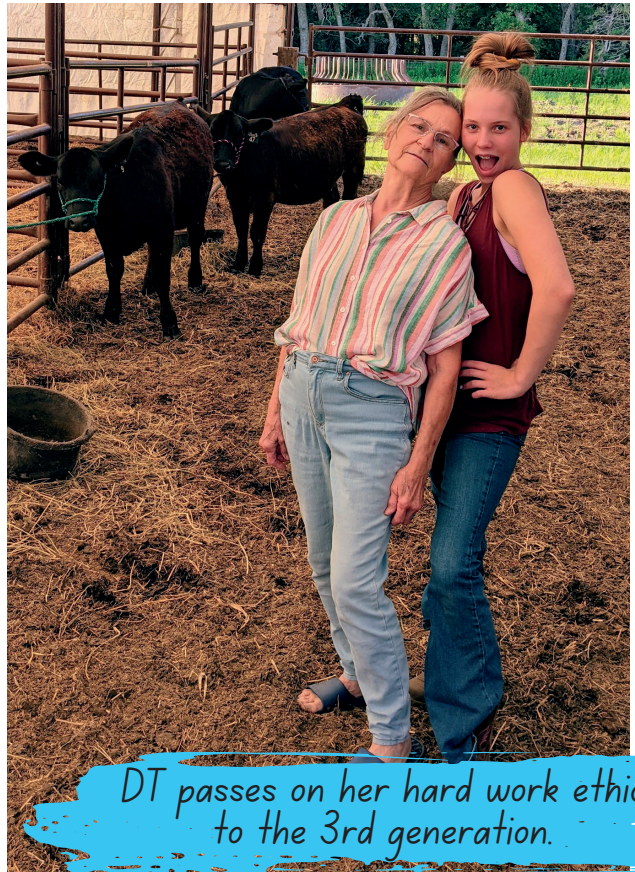
Lot 39 is a thick made Right Time son. Right Time calves are being well raised and impressive. That that off by being out of Dakota Rose and that equals good things.

40

TSA MR PIKE K277

Black - 1/2 SM - ASA # 4126939

BD: 3/13/2022
BW: 86
WW: 772



DT passes on her hard work ethic to the 3rd generation.

RUBYS TURNPIKE 771E
TKCC TURNPIKE 812G
FORD FJ DOLLY Y83

TL NORTH STAR
TSA MS GABBS G982
ES B12

Consistency across the board in this bull's numbers.

| CE | BW | WW | YW | MILK | MWW | DOC | REA | API | TI |
|-----|-----|------|-------|------|------|------|------|-------|------|
| 7.2 | 4.1 | 87.2 | 129.1 | 25.2 | 68.7 | 10.3 | 1.07 | 109.7 | 75.5 |

41

TSA EMT MR LOADED K2148

Black - 3/4 SM - ASA # 4163588

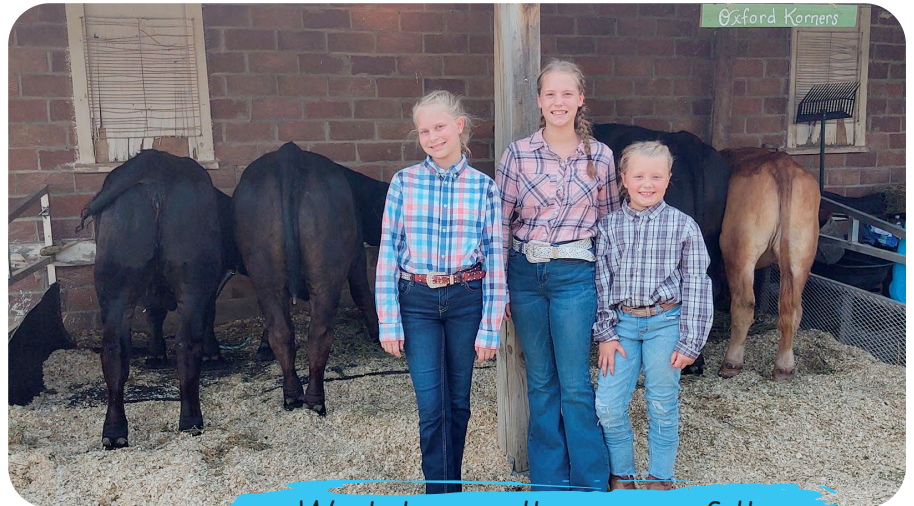
BD: 3/30/2022

BW: 85

WW: 657

REMINGTON LOCK N LOAD 54U
DMCC/WOOD FULLY LOADED 39D
AUBREYS BLACK BLAZE III

SSR BULL 44Y
TSA EMT MISS TANK D6141
TSA EMT MISS U33



We believe in the power of the 4-H program for our future farmers.

Here is a nicely made thick rascal in a moderate package. A Supertanker daughter that's no nonsense and great uddered.

| CE | BW | WW | YW | MILK | MWW | DOC | REA | API | TI |
|-----|-----|------|-------|------|------|------|------|-------|------|
| 7.2 | 4.1 | 87.2 | 129.1 | 25.2 | 68.7 | 10.3 | 1.07 | 109.7 | 75.5 |



*Elex Rust & son
- Past Thyen Simmentals Customer -*

*At Thyen Simmentals,
docility is high on our list.*

THYEN
Simmentals

45142 183rd Street
Hayti, SD 57241