



★ YODER BROS. ★ LARGE 2 DAY SPRING

3
Auction Rings
Selling
Both Days!

CONSIGNMENT AUCTION

NOTICE
New Dates

Farm Equipment • Shop • Outdoor Miscellaneous

~ Clare, MI ~

Location: 1/4 mile north of Clare, Michigan on Business 27 to Colonville Rd. East 3 3/4 miles to sale site. 7656 E. Colonville Rd., Clare, Michigan. Follow Yoder Brothers Auction Signs.

Thursday & Friday, April 20th-21st, 2023 @ 9:00 a.m.

CONSIGNMENTS
★ WELCOME ★



Yoder Brothers Auction Service

Specializing in Successful Auctions

Auctioneers LeRoy and Willis Yoder

9484 S. Rodgers Ave., Clare, MI • PH: 989-386-9082





YODER BROTHERS LARGE 2 DAY CONSIGNMENT AUCTION

Thursday & Friday, April 20th-21st, 2023

9:00 a.m.

7656 E. Colonville Rd., Clare, MI

First Class Mail
Presorted
U.S. Postage
PAID
Mt. Pleasant, MI 48858
Permit No. 110

9484 S. Rodgers Ave.
Clare, MI 48617



Day 1

Come Early!
**FREE
COFFEE**
until 9 a.m.



Day 2



Be a Part of
**Central Michigan's
Largest Farm Equipment
& Outdoor Auction Event!**

For More
Photos See
gotoauction.com/2109

CONSIGNMENT INFORMATION

We Will Start Taking Consignments on Friday, April 14th at 8:00 am to 5:00 pm until Wednesday evening, April 19th, 2023 at 5 pm Sharp! Closed on Sundays. Note: We will not be accepting any equipment Thursday or Friday morning. Only usable items. NO JUNK! Auction staff reserves the right to reject any items that do not reach this standard. No household, glass, or old tires. Loader tractors will be available for unloading and loading. *Thank you!*



YODER BROTHERS HORSE & CARRIAGE AUCTION DATE



Fri. & Sat., May 5th-6th
MT. PLEASANT FAIRGROUNDS

CATALOG
DEADLINE,
APRIL 3RD

AUCTIONEER'S NOTE: Mark your calendars and plan on joining us for Two Days of FUN and Auction Excitement! Bring your families and friends as there will be 3 auction rings selling both days. Hope to see you there! LeRoy

Terms: Cash or approved check with proper I.D. Nothing is to be removed until settle for. Everything is sold as is there are no warranties or guarantees, and not responsible for items after sold. Statements made day of auction take precedence over printed matter. Not responsible for accidents. Auctioneer not responsible for no shows. Lunch wagon and restroom facilities available on grounds. Visa, Mastercard and debit accepted with a 4% handling fee. Out of state buyers must have bank letter of credit. Absentee & Phone Bids Welcome to Pre-Qualified Customers with a 3% Buyers Fee. ALL ITEMS TO BE REMOVED WITHIN 14 DAYS AFTER SALE DATE.

ITEMS LEFT AFTER 30 DAYS BECOME PROPERTY OF LAND OWNER.



COMMISSION RATES - PER ITEM

\$0-\$50.00	20%
\$51.00-\$500.00	15%
\$501.00-\$1000.00	10%
\$1001.00 and Up	8%

With no charge more than \$500.00 per item.
\$5.00 Minimum charge per lot sold. If a lot sells for less than \$5.00 you will only be charged for what it sells. BUY BACKS - \$5 min. charge - 10% with no charge of more than \$75.00 per item.

Yoder Brothers Auction Service

Auctioneers LeRoy and Willis Yoder

9484 S. Rodgers Ave., Clare, MI

PH: 989-386-9082



3 Auction Rings
Selling Most of the Day!

Thursday, April 20th • Day 1 - 9:00 A.M.



LAWN & GARDEN
Early Consignments

- CUB CADET M-54 Commercial Zero Turn Mower, 453 Hrs.
- FERRIS 500Z Zero Turn Mower 60", 27 hp Briggs, 316 Hrs.
- ARIENS Ikon X52 Zero Turn Mower 23 hp Kawasaki, 279 Hrs.
- DEWALT 33" 382cc Walk Behind Mower, Like New, Demo
- HUSQVARNA 436 Commercial Walk Behind Mower w/ Bagger, 196 Hrs.
- CUB CADET 760cc 33" Walk Behind Mower
- GRAVELY 5865 w/a Full Line of Attachments

BUILDING & MATERIALS
Early Consignments

- New Chicken Coops • Assorted New Mini Barns and Garden Sheds • New and Used Metal Siding • R-R Ties • Treated Posts



BOAT & TRAILERS
Early Consignment

- Expecting a Variety of Boats and Trailers

ANTIQUES & COLLECTIBLES
Early Consignment

- 30+ ERTEL Collector Tractors • Pedal Tractors • Hand Crank Corn Shellers • Wooden & Steel Wheels

SHOP & WOODWORKING ITEMS
Early Consignments

- Tenon Machine w/2" & 1 1/2" Tenons w/Hydr Set-up
- 150+ Lots of NEW DeWALT & MILWAUKEE : 18, 20 & 60 Volt Tools Include: Table Saws, Chain Saws, Impact Drivers, Circular Saws, Planers, Impact Wrenches, Quantity of New Batteries, Goodie Wagons of Misc. Shop Items
- MANY MORE ITEMS TOO NUMEROUS TO LIST.



Friday, April 21st - Day 2

TRACTORS, SKIDSTEERS & FORKLIFTS
Early Listing • Expecting Approx. 30+ Tractors

- JOHN DEERE 8630H Articulating 4x4 Tractor, Quad Range, 3 Remotes, 3 Pt, 1000 Pto, 20.8-38 Duals, Orig. Condi, 6933 Hrs
- JOHN DEERE 482C Yard Forklift, 5000 Lb Lift, 21' Reach, Cab, 2 Wheel Drive, Runs Good
- TOYOTA 5000 Lb Forklift, 3 Stage, Propane, Hard Tires, 7,120 Hrs, Runs Good
- CLARK 9000 Lb Yard Forklift, Dual Front Tires, Perkins Diesel, 5800 Hrs
- YANMAR 226 Diesel Tractor w/YFL 800 Loader, 4x4, 3 Pt, Pto, 26 Hp
- CUB CADET 5234 Diesel Tractor w/Loader, 3 Pt, 23 Hp
- CASE 730 Comfort King Tractor, Gas, 18-4-34 Tires
- FARMALL Super M Tractor N/F Power Steering, 12 Volt, Runs Nice
- FORD 8N Tractor, Runs
- DEUTZ Tractor Agro Plus 85 w/Loader, 4x4, 12,243 Hrs, Uro Attach, 4 Remotes
- DEUTZ 6806 Tractor Diesel, Runs Good, No Pto
- 1962 MILITARY UNIMOG w/Mercedes Benz, Gas, Runs
- GEHL 4835 SXT Skidsteer w/Turbo, 2743 Hrs.

MISCELLANEOUS FARM ITEMS

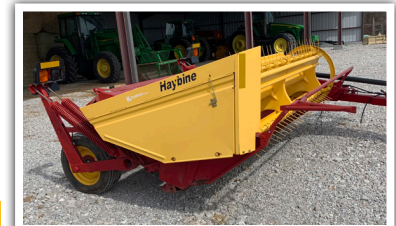
- Semi Load of Various Size Treated Fence Posts • R-R Ties • Hog & Cattle Feeders • Cattle Gates • New Horse Hay Hut • T Posts • Implement & Tractor Tires
- 1 Auction Ring Selling Farm Parts Most of the Day • MANY MORE ITEMS TOO NUMEROUS TO MENTION



Day 2 continued • EXPECTING 400+ PIECES of FARM MACHINERY. Two rings selling side by side most of the day!

EARLY CONSIGNMENTS OF HAY EQUIPMENT

- 2013 **NEW HOLLAND** BR 7070 Round Baler Silage Special, Net Wrap, 1300 Bales
- 2013 **NEW HOLLAND** BR 7060 Round Baler, Ultra Sweep, Net Wrap
- 2009 **NEW HOLLAND** BR 7060 Round Baler Silage Special, Net Wrap
- **JOHN DEERE** 385 Round Baler, Twine Tie, Nice Cond
- 2004 - **KRONE** Big Pack 128 VFS, 3x4 Lg Sq Baler w/Monitor and Bale Command
- 2002 **NEW HOLLAND** B.B. 940 Large Sq Baler w/Liquid Applicator
- **NEW HOLLAND** 688 Round Baler, Bale Slice, Twine & Net Wrap
- **NEW IDEA** 4855 Round Baler, Twine Tie, Monitor
- **NEW HOLLAND** 1465 Haybine, Clean Cond
- 2015 **NEW HOLLAND** 488 Haybine, Very Clean Cond
- 2014 **NEW HOLLAND** 488 Haybine, Very Clean Cond
- **NEW HOLLAND** 492 Haybine, Low Acres
- **JOHN DEERE** 336 Sq Baler
- **NEW HOLLAND** 273 Sq Baler w/Wisc Motor, Field Ready
- **NEW HOLLAND** 66 Sq Baler w/Wisc Motor
- **GEHL** 980 18' Forage Wagon w/Tandom Gear
- **GEHL** 970 16' Forage Wagon w/Horst Tandom Gear
- **FARM KING** 2 Basket Tedder
- 2 - **PEQUEA** 9' Ground Drive Hay Tedders
- 12 - **NEW HOLLAND** Rolla Bar Rakes, Good to Very Good Cond
- **NEW IDEA** 10 Wheel V Rake
- **SITREX** 8 Wheel V Rake
- **JOHN DEERE** 10 Wheel V Rake
- **TONUTI** RC 510 10 Wheel V Rake
- **VERMEER** WR20 8 Wheel V Rake
- 2015 **ENROSSI** 8', 3 Pt, Sickle Bar Mower
- **JOHN DEERE** 1075 & 965 Wagon Gears
- **E.Z.** 1074 Wagon Gear



EARLY CONSIGNMENT OF TILLAGE EQUIPMENT

- 2 - **KEWANEE** 1010 20' Discs
- **JOHN DEERE** 220 20' Discs
- **KEWANEE** 580 7 Shank Soil Saver
- **I.H.** 490 24' Disc
- **CASE** 24' Disc
- **CASE** 12' Disc
- **ALLIS** 12' Disc
- **JOHN DEERE** 956 Disc
- **I.H.** 9' Wheel Disc
- **BRILLION** 15' Cultipacker
- **BRILLION** 9' Cultipacker
- 5' & 6' Cultipackers
- **I.H.** 8' Vibra Shank
- **I.H.** 10' Vibra Shank

EARLY CONSIGNMENT OF OTHER FARM EQUIPMENT

- **BRILLION** S-S-10 Sure Stand Seed Drill w/DbI Seed Box & Packers
- 2 - **JOHN DEERE** FB 18 Hole Grain Drills, Dbl Disc Openers, Nice Cond
- **NEW IDEA** 519 Manure Spreader, Poly Floor, Dbl Beaters
- **GEHL** 1177 Manure Spreader w/Hyd End Gate
- **NEW IDEA** 3610 Manure Spreader, Dbl Beaters
- **JOHN DEERE** 1240 4 Row Corn Planter
- **I.H.** 2 Row Corn Planter
- **FINKLIN** 435 Gravity Wagons, 8 Ton Gear
- **KOREY** Gravity Wagon, 8 Ton Gear
- **KOREY** Gravity Wagon w/J.D. Gear
- **PENTA** 4120 Tub Mixer w/E2000 Digi Stari Scale

QUICK ATTACH & 3 P.T. FARM EQUIPMENT

Early Consignments

- **BULLDOG** 3 Pt Cone Spreader (Like New)
- Q.A. 48" Forks • **WOLVERINE** Q.A. 60" Tiller
- Q.A. 48" Forks • **WOLVERINE** 72" Tiller
- 5' King Kutter Brush Hog
- 6' 3 Pt Rhino Brush Hog
- 7' 3 Pt Disc • J.D. 2 Row, 3 Pt Corn Planter
- 3 Pt Back Blades • 5' & 6' 3 Pt Cultivators
- 4' Cultipackers

EARLY CONSIGNMENT OF HORSE DRAWN FARM EQUIPMENT

- **NEW IDEA** No 10 Manure Spreader, Rebuilt
- **NEW IDEA** No 8 Manure Spreader, Rebuilt
- **PIONEER** 2 Bottom K.V. R.H. Plow
- **JOHN DEERE** 1065 Hay Wagon w/New Bed, Grain Sides, Rack
- **JOHN DEERE** 43 Corn Sheller
- 15' Wagon Bed w/Grain Sides • Steel Wheel Wagon Gear • I.H. Silo Filler • J.D. 12' Spike Drag • 8' Tandem Disc • McDeering Corn Binder

