

# WHALEN WHALEN

REALTY & AUCTION, LTD.

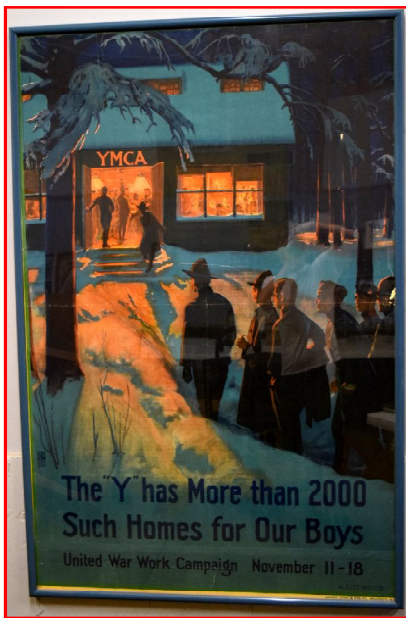
P.O. BOX 550

NEAPOLIS OH 43547

EPHEMERA & Die Cast Auction

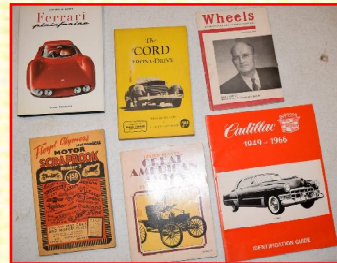
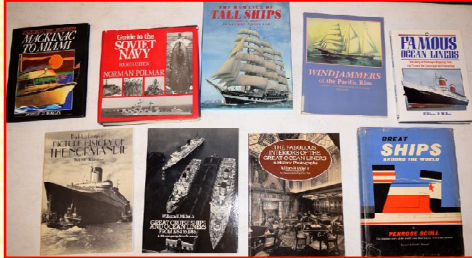
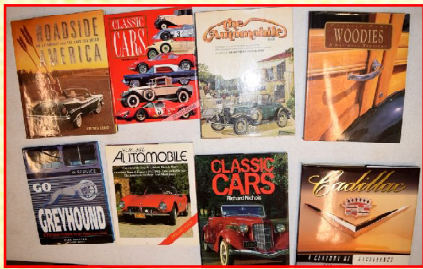
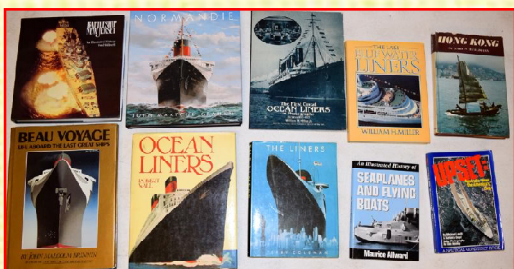
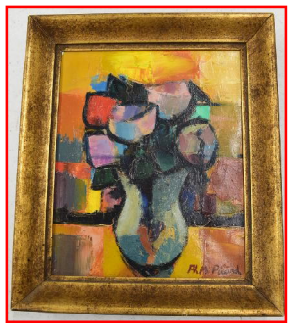
Posters, Books, & More

Friday, July 29, 2016 at 9:00 am



Original WW1

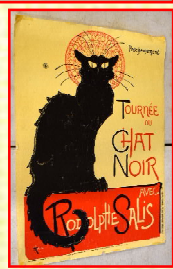
EXTRA LARGE AUCTION  
Estate of Don Cleveland



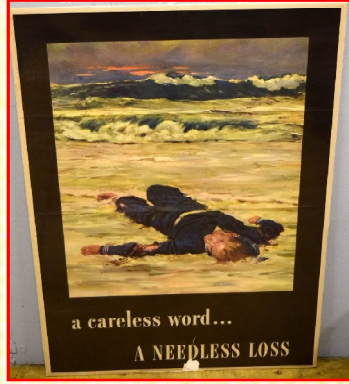
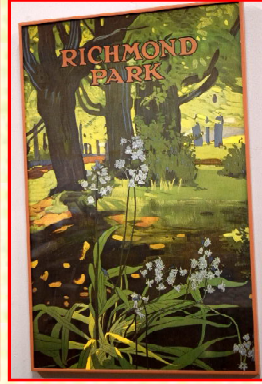
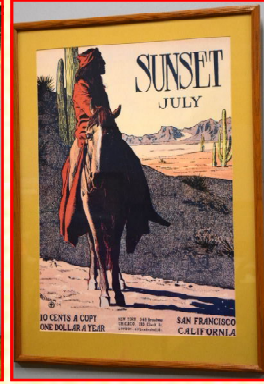
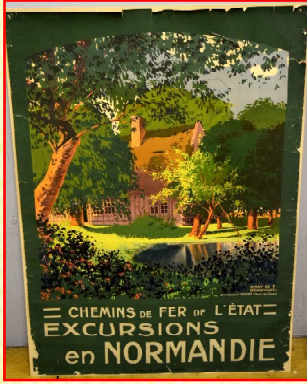
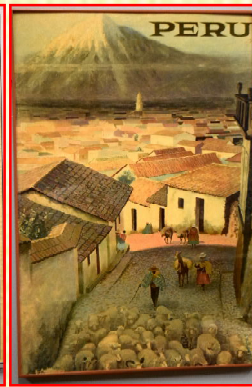
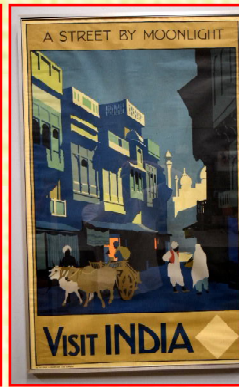
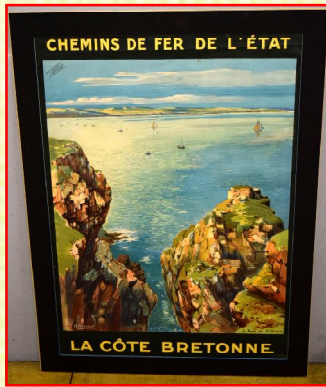
Estate of Donald J. Cleveland, Wood Co Probate 20151464, Lea C. Schinzer Exec. & Others



www.  
whalen  
auction.  
com



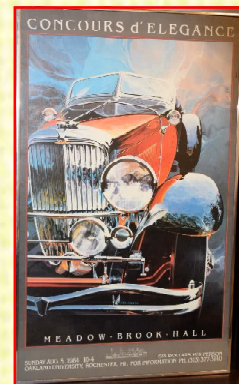
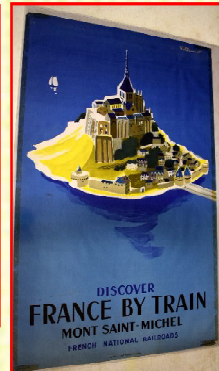
**Terms:** Cash or check w/I.D., 5% fee for M/C & Visa. Lunch by Sandy's, plenty of parking & seating in our climate controlled building. **Open:** Week of auction from 8-3pm, Thursday July 28 from 6-8pm & auction day @ 8:30a.m. See [www.whalenauction.com](http://www.whalenauction.com) for photos & listing!



**POSTERS:** YMCA original WWI vintage litho 39x60"; French matted litho LaCote Bretonne 40x28"; French 1940's Excursions en Normandie 29½x42"; Mardi Cras 79,80,81,82,83,87,89; many Frank Lloyd Wright; Boat & Sailing; Normandy & New York French Line; L'Atlantique & London's Dockland Boat; Excursions en Dretagne-Cornille & Serre July '52; (2) 1940's War posters; Visit India litho 24x39½"

**Auto:** Auburn, Cadillac, Cord, Ferrari, Lamborghini, Packard, Duisenberg; Rolls Royce; Concours D Elegance car show; & more. Underground Flying at Hendon; Pan America Poster; several framed prints of Car Advertising.

**BOOKS:** Ships: over 100 ship books such as Grand Luxe; Tall ships of High Seas; Beau Voyage-Life abroad the last Great Ship; Normandy; Colorado-Class Battleships; The only Way to Cross; Great Passenger Ships of the World; The World's most Extraordinary Yachts; Chris Craft brochures; The Battleship USS New Jersey; Aviation: Vulcan; Wings of Yesteryear; American Flying Boat; The Pan Am Clipper; Silver bird; Seaplanes; History of RAF; Early America Jet Liners; Hellcat; Carrier Aviation; Spitfire; Illustrated History of Air Travel; Wings; Valkyrie; Hindenburg; Great book of Bombers; Frank Lloyd Wright: Interior Style & Design; Frank Lloyd Wright-50 Key Buildings; America's Greatest Architect; Falling Water; The Masterworks; Prairie Houses; Furnishings; Wright Rooms; Architectural Monographs #18; American Art Deco; Greene & Greene Masterworks; Art Deco; Auto: over 300 books & advertising-Cadillac; sports cars; collectible automobiles; vehicles; classic American cars; American Automobile, A Centenary; Roadside America; Classic Cars; Go Greyhound; Woodyes; Aetna's 1934 \* 35 Auto Show; Cadillac shop manual 1950 & 56; Auto brochures 1956 Lincoln; Classic Cord; Rolls Royce; Misc: Grand Homes of the Midwest; Moonlight in Duneland; Beautiful California; Art & History of Egypt; Looking for Jackie; Art of War; many by W.E.B. Griffin; Cecil Beaton the Royal Portraits; The World of Upstairs Downstairs; Eye on Australia; Louis Comfort Tiffany; Kinsey Photographer; Extra Vagance; The Last of the Nuba; The Great Southwest; The America Beautiful; Louis Comfort Tiffany Artist for the Ages; Masterpieces of Faberge; Building Sights; Nebraska a Photographic Celebration; Marilyn Monroe; Early Cosmopolitan magazines; Tropical Deco; Sky Scrapers; The Pacific North West & Alaska; Hollywood Legend & Reality; + more. POSTCARDS: 100's of cities around the world; assorted transportation; Menu Cards: Nord Deutseher Lloyd; Los Angeles Steamship; Normandy Steamship; Waldorf Astoria; Queen Mary; Bank notes; Gates Bell Guides; Receipts; 1933 Chicago Herald Examiner; magazine advertising clippings-Whistle Soda, Mac Truck, Lifesavers, Brunswick Radio;+ more. Oriental Items, Paintings: 6 panel Oriental bird screen; 4 & 2 panel oriental flower screen; oriental prints; oil paintings by Ph M Picard, (2) P. Maik; watercolor by Gene Getz 1965 Feedmill; Paul Landry water color; M. Ortuzer watercolors; J. Aseltine water color; Aedene Adams Scheyler water color; Birds of Paradise by Stark Davis; Rugs: Deep orange 65x38; red medallion 59x44"; green with leaves 34x57"; Kerman red medallion runner 26x48"; + more. DIE CAST: 150+ die cast cars.



**WHALEN WHALEN**  
REALTY & AUCTION, LTD.

