

LIVE!

PUBLIC AUCTION

**COLLECTOR CARS - TRAILERS -
BACKHOE - STORAGE UNITS -
-REAL ESTATE-**

SATURDAY OCTOBER 22, 2022 SALE STARTS AT 10:00 AM

The Estate of Aberdeen and Helen C. Howard - From Detroit take I-94 to PORT HURON go north on M-25/Pine Grove 2 miles (turns into 24th Ave,) continue north 1-1/2 miles to Keewahdin Rd. (turn left at Cheap Charlies restaurant) then west 1/2 mile to **3380 Keewahdin Rd. Fort Gratiot Twp, MI 48059**



1926 Dodge Sedan Wagon A689748, suicide drs, wood spoke wheels, from Garrity motors Sales – Hamtramck,



"Sharp" 1986 MGTD convertible, white, w/ RR VW eng., 14,345 mi,



1929 4 Dr, Sedan, nash green, no mtr, doors off, rough condition,



1957 Chevrolet Bellair 4 Dr, Maroon, Az Title,



1978 Iniezione Convertible, Alpha Romeo,



1970 MGB convertible, red, 41,831 mi,



1947 Chrysler Royal traveler, 4 dr. sedan w/rear suicide drs , Chrysler spitfire 6 cyl. shows 63,385 mi,

1998 Lincoln Continental, 4 Dr, White,



1993 Lincoln Town Car, Blue, Shows 78,338 Mi,



1984 Buick Riviera, 2dr, Front Wheel Drive, Off White (Mice Ate Seats)

1983 BUICK RIVIERA 2dr, FWD, white (True convertible top), shows 33,290 mi,



1990 Pontiac Sunbird, red, 2 Dr, Convertible



1972 MG Convertible, blue,



1991 Cadillac Sedan Deville, 4 dr, white,

1985 Ford Bronco II, cream/brown,



1992 Eagle Talon, 2 dr. white,

1992 Chevrolet Cavalier ZZ4 convertible, Indy 500 Pace Car, 3.1 engine, 113,132 mi,



2000 Ford F350 SD Pick-Up, 4 wd, dully, ext cab, 8' box, 7.3 dsl, A/T, lockout frt hub, alum. Tool box, 169,655 mi,



1961 Chevrolet Belair, 4dr,

1984 Pontiac Fiero GT, w/ RR Engine,

Note: There May Be 2 Auction Rings... Auction Starts With Household, Tools, Vehicles And Trailers. WILL STOP FOR REAL ESTATE AUCTION AT 12:00 NOON.



Massey Ferguson 275 Dsl Tractor W/MF 235 Front Loader, 14.9-28 Rr Tires, 2wd, 3pt Imco 6' Brush Hog,



John Deere 850 Tractor, 3 Cyl Dsl W/Cab, 2wd, Rr 13-6-16 Turf Tires W/3 Pt 4' King Cutter Brush Hog,



John Deere 410B Loader Backhoe, Dsl, 2wd, Turbo, Cab, 4439 Hrs,



Heavy Duty Toyota Forklift, 6 Cy, Toyota L30 Eng, Dual Frt. Wheels, Lp Gas,



1999 Red Hallmark 28' Enclosed Car Hauler Trailer Mdl G828RT3-102



14' Ramp Door Pinal Hitch Trailer



Fruehauf Tandem Dual Semi Trailer Mdl Fbx-F2-48' LLW GM TI3000 On Side Storage Van Box, 4 Car Hauler, Inside Front Hoist,



Small Camper trailer,

Fork Lift Dumpster,

Assembled Single Axle Gooseneck Hitch From A Us Mail Step Van



Lg. Assembled Tri Axle 8' Gooseneck Hitch Car Haul Or Horse Trailer 90"W X 30' Bed, Enclosed

Hallmark 20' Enclosed Car Hauler Fold Down Rear Gate, White, Model GS20T2-102W,



1992 Prowler 5th Wheel Travel Trailer, (Lg Hole In Center Of Roof,)

STORAGE BOXES

35' alum. Van box, Fruehauf alum. 40' mdl ssvv65240, Dorsey 45' van Gem 45' alum.



1956 Fruehauf 17' Drop Deck Tri Axle Crane Hauler, Detachable Gooseneck Old Plate,



Assembled Trailer Tri Axle Dovetail Gooseneck Hitch 21'4" Bed 29' 4" Overall



10' Tandem Axle Tilt Trailer Pinal Hitch



2 Car Hauler Wedge Tandem Axle 35' Trailer

1978 Ford F600 dump truck, 14' aluminum Truck Box Fold Out Doors, Dumpster Boxes Load-A-Matic's, 35' Tandem Axle Enclosed Trailer, '53 Old Refer. Storage Semi Trailer, Set Of Semi-Trailer Axles & Jack Stand, 10' Grumman Storage Box,

TERMS OF SALE: Payment is expected in full day of sale in CASH OR GOOD CHECK – 5% Buyers Premium. \$500.00 Non-Refundable Deposit Per Unit Due At Time Of Sale – Balance Can Be Paid On Monday Oct. 24, 2022 From 11 Am To 6 Pm At Auction Site. All Items Must Be Removed Within 30 Days Of Auction Or Are Forfeited. All items SOLD "AS IS" "WHERE IS" All sales final. Sales Principles- Auctioneers, Clerks And Owners Of Property Are Not Responsible Or Liable For Accidents, Or Lost Or Stolen Goods After Sold. Auctioneers & Clerks Are Acting Sales Agent Only And Assume No Guarantees Or Liabilities. Statements Made Day Of Sale Take Precedence Over Printed Matter Herein.



05/2005 "Fleming" Gooseneck Hitch Tandem Axle 19' X 80" W Steel Deck Trailer 5637 W/Pwr. Winch Tilt Trailer

Metal single axle trailer, slope front, canvas top, house trailer,



1967 Wells Cargo trailer, low profile, black, exterior and interior dmg,



J. R. T. THUMB AUCTIONEERS & REALTY, LLC

Cell (810) 650-2730 CAPAC, MICHIGAN

(810) 395-9000

For Complete & Professional Auction Service

LET US HELP YOU PLAN YOUR AUCTION

ESTATE ANTIQUE HOUSEHOLD FARM INDUSTRIAL



YARD/GARDEN

Green Yard Cart,
Snapper Rr Engine Mower,
2' Hand Cement Lawn Roller,
Cushman Gm Electric Cart, 3027 Hrs,
John Deere 165 Hydro, 38" Deck Fb460



Toro 88" cut,
front mower
grounds
master 345,
power
steering,
4,680 hrs,

TOOLS

2) Wood Block Planers, Power Tools,
Drills, Sawzall, Wrenches, Side
Grinder, Air Compressor, Sears Electric
Chainsaw, Homelite Generator, Yellow
Gas Water Pump, Sand Blaster, 3 Pt
Quick Hitch – **like new**, 1750-Watt
Generator, Galto Hyd. Press, Power
Winch, Stroh's Box Full Of Stove Pipe,
5) Rolls Cyclone Fencing, Heavy Duty
Metal Bandsaw, Cummins 12 Speed
Drill Press, Bolt Caddies, Pallet Jack,
Lathe Metal Grinder Unit, Packraft 12
Volt M 125b5p 19' Scissor Lift, Ben-
Pearson NDL 2 post car hoist, New
Torch, Lg Tank, Cart, ½ Cable Winch,
2) Craftsman Roll Around Tool Boxes,
Shovels, Chain Binders, Workbenches
(1 With Vise), Durcraft Double Arbor
Grinder, Craftsman Miter Saw, Carts,
Aluminum Tank & Tool Box, Engine
Stand, Tall Covered Dumpster, Heavy
Duty Chains, Crosscut Saw & Bucksaw,

FURNITURE/HOUSEHOLD

Pitcher & Bowl, Table, Pine Gun Cabinet,
Canes, Brass Stand, Tall China Cabinet,
Frigidaire Washer & Dryer, Country
Scene Painting, 3 Pc. Black Sectional,
Pine Roll Top Desk, Dark Blue Recliner,
Desk And Chair, Microwave, Table And
Chairs, Kenmore Fridge & Electric Stove-
Black, 2 Pc. Dresser Set, Double Bed,
Mantel Clock, Bed, Leather Recliner,
Loveseat, 6) Roll Down Cabinets,

ANTIQUe/COLLECTIBLES

Set Of 4 Gum Ball Machines, Horse
Statue Collection, Old Steel Spoke
Wheel Wagon, Campbell & Shield Sign,
Tonka Toys, Aristocrat The Gambler 25
Cent Slot Machine, Dry Sink, Sectional
Sing. Butler, Wurlitzer Juke Box, Old
Railroad Log Holder Cart, Pr Of Steel
Spoke Wheels, Old Wooden Wagon
Wheel Frame,

MISC

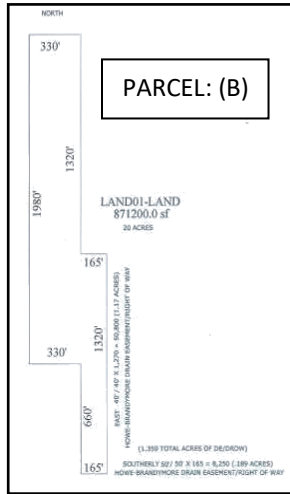
4) Aluminum Rims, 4) Watches, Pile Of
Steel Trusses, 16) Bundles Hardwood
Flooring, 3) Steel Lawn Chairs, Hot Blaze
Wood Add On Furnace, 200 Gallon
Gravity Feed Barrel, Folding Pallet
Boxes, Old Cushman Golf-Yard Cart,
2) Wheel Chair, Power Scooter, Hospital
Bed, 1993 Yamaha Wave Runner,
Kawaski Jet Ski, Electric Jet ski, Wellcraft
Nova 250 Boat, 2 Place Galvanized
"Karvavan" Trailer, Guttled Out
Slaewonder Fiberglass 14' Boat On
Yarbough Trailer,

**LIVE IN PERSON ON SITE REAL ESTATE AUCTION SATURDAY
OCTOBER 22, 2022 - STARTS AT 12:00 NOON - CONSISTING OF 2
PARCELS (A) & (B), 2 HOUSES AND OUTBUILDINGS.**



PARCEL: (A) 4009-000
RANCH STYLE W/ ADDITIONS. APPROX.1020 SQ. FT. OUTSIDE MEASUREMENT. W/21'X41' GARAGE. LOT HAS 82.5' FRONTAGE. LOCATED ON 1.25 ACRES. HOUSE NEEDS REPAIR. KNOWN AS 3390 KEWAHDIN RD. FT. GRATIOT, MI 48059

**PARCEL: (A)
74-20-016-4009-000**
E 82.5' OF S 660' OF
W 1/2 OF SW 1/4 SEC 16
T7N R17E 1.25 A



**PARCEL: (B)
74-20-016-4002-000**
W 5 A OF SE 1/4 OF SW
1/4 & N 3/4 OF E 1/4 OF W
1/2 OF SW 1/4 SEC 16
T7N R17E 20A



PARCEL: (B) 4002-000
RAISED RANCH STYLE HOME W/3 BEDROOMS, 1-1/2 BATHS, FULL BASEMENT, 1-1/2 CAR GARAGE, ALUM. RAMP ENTRY, SMALL OUTBUILDINGS AND LARGE POLE BARN, APPROX. 2900 SQ. FT W/FRONT LEAN TO 1100 SQ. FT. LOCATED ON 20 ACRES APPROX. 2540 DEEP, IRREGULAR SHAPE W/ 165' FRONTAGE. KNOWN AS 3380 KEWAHDIN ROAD, FT. GRATIOT, MI 48059

**PARCEL "A" WILL BE AUCTIONED FIRST THEN PARCEL "B". PRICE FROZEN
WILL THEN BE COMBINED AND AUCTIONED TOGETHER (RAISED BY \$1,000.00 INCREMENTS.)**
REAL ESTATE AUCTION TERMS: Bid is acceptance of terms set forth in the sales agreement and the title insurance exception and exclusion which is also available for review at or prior to auction. All properties are offered in "AS IS" present condition. Potential buyers to inspect prior to auction. A \$5000.00 deposit in certified funds (Means a bank money order, cashier's check or cash), no personal check accepted, due at time of auction. Balance due at closing within approx. 45 days. Note: the \$5000.00 deposit is non refundable unless sale is rejected by seller. Seller has until 5:00 P.M. Wednesday October 26th, 2022 to accept or reject any and all bids. Note: 3% buyers' premium on real estate.



J.R.T. THUMB AUCTIONEERS & REALTY, LLC
Cell (810) 650-2730 CAPAC, MICHIGAN

J.R.T. THUMB
REALTY &
AUCTIONEERS, L.L.C.
John Tomaschko-Auctioneer/Realtor/Broker
Thinking of selling or buying property?
Give us a try!