

AUCTION



1954 International

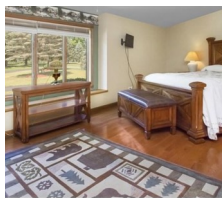
R-100

Friday, June 25 @ 10:00 a.m.

68757 Territorial Rd, Lawrence, MI



Tractors: 1957 Farmall 350 sn2028* 1951 Farmall Super "C" sn 112922 * 1964 Farmall "Cub" sn 224154 * IH Super "M" LP sn F-4384 U * IH "H"* **Equipment:** 2-Cub Cycle Mower* IH Cub Quick Attach 1 Bottom Plow* IH 2 Bottom Plow* IH Quick Attach Platform Lift* IH #8 2-Bottom Wagon Plow* JD 4 Bottom Wagon Plow* 50s Era IH Barge Wagon (Restored) * Double Cultipacker* 4 Section Spike Drag* 2 Section Spring Drag* AGRIC RFMJ 65 3 pt Tiller* 2 Garden Plows * 2- Haywagons * **Garden Tractor:** John Deere 110 (Complete Rebuilt)* Powder Coat Paint* JD 80 Wagon* JD Sulky * **Collector Truck:** 1954 IH R-100 (Restored)* **Misc:** 18' Sylvan Westwind Pontoon w/ 28 hp Johnson* 3.5 hp Evenrude Boat Motor* Engine Hoist* Scissor Lift Wagon Hoist* Work Bench* Shop Supplies* Hardware* Sinclair Fuel Can* Moore Man Thermometer* Shop & Hand Tools* 50s Era Index Cabinet* **Household& Collectibles:** 8 Piece Bedroom Set* Dining Room Table & 6 Chairs* Dining Room Table w/ Benches and Captain Chairs* Round Oak Table & Chairs* Oak Hall Tree w/ Bench* Antique Secretary Bookcase* Sofa Table* Dressers* Vermont Casting Radiant Gas Stove* Cast Iron * Dishes/ Pots & Pans* Blue Glass Avon * Kitchen Appliances* Sold home many unlisted Items * All Items sold with a story.



Owners:

Roger & Mabel

Vander Molen

68757 Territorial Rd

Lawrence, MI 49064

Big Bear Auctions

Jerry & Aimee Glassman

269-757-3313

BigBearAuctionCompany.Com

Terms: Cash, check, Credit Card, 5% BP on C/C. All Sales Final. All sold in AS/IS Condition. Not Responsible For Accidents. Announcements Made Day of Sale Supersede Printed Material