

# Construction/Demolition Equipment

# AUCTION

*On-Line Only*

1169 26th st. • Allegan, MI  
May 26th - May 28th



1999 Case 9010B excavator



1999 Kubota KX-91



2003 ASV RC100



Toro TX425 Dingo



1996 Chevy 3500



2004 Lincoln Towncar Ultimate



1962 Cadillac four door



2008 Ford E350 work van

Due to health concerns, Mike, owner of Interior Demolition Specialists is offering the following for public auction. This auction will be online bidding only, the bidding will begin Tuesday May 26th and continue through May 28th ending at 8:00 pm.

2004 Case 21D Package Loader



Norton Clipper Concrete saw



2005 LandPride trailer



Simplicity Zero-turn



Husqvarna K650 Cut-N-Break



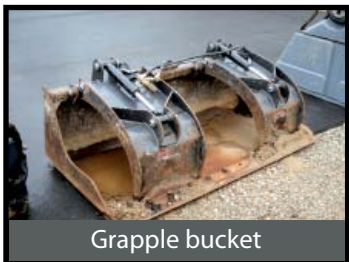
Bobcat hydraulic auger



pallet forks



80" snow bucket



Grapple bucket



Jobox work box



Partner K750 concrete saw



Makita DPC 7301 conc. saw



Maxx Air 48" fan



Bobcat hydraulic auger



Homelite 6300 watt generator

More Photos and information on the reverse side

## Interior Demolition

## Specialists



Auction Service

for information contact:  
Scott Vander Kolk Jr. - (616) 437-1047  
Scott Vander Kolk Sr. - (616) 292-4085

VKauctions.com

For more information and photos visit: [www.VKauctions.com](http://www.VKauctions.com) or go straight to the online catalog [www.Proxibid.com/GoldenGavel](http://www.Proxibid.com/GoldenGavel)

**VEHICLES & TRAILER & MOWERS**

2004 Lincoln Towncar Ultimate  
41,000 miles, loaded vin 625554  
1962 Cadillac four door - 502 engine, auto trans,  
38000+ orig. miles, hard top vin 6zk1023790  
2008 Ford E350 work van - single rear wheel,  
Knapheide fully enclosed utility service body, auto, 5.3  
gas, air, cruise, 11000 miles vina01122  
1996 Chevy 3500 - full 4 dr, dsl 6.5, auto trans, 8'  
stake bed w/racks, 92000 miles, recent new injector  
pump, brakes water pump, alternator and battery vin  
019447  
2005 LandPride trailer - 18' 8000# axles, 4' sides, all  
steel  
Simplicity Zero-turn lawnmower - mid-mount, 18  
hp, 44" deck, 224 hrs.  
Yard Machines 6 hp, 21" cut pushmower

**HEAVY EQUIPMENT**

2004 Case 21D package loader - 1222 hrs., dsl,  
quick attach bucket, Perkins 700 series engine, heated  
cab, ser782-s10451  
1999 Case 9010B - 2800 hrs, stationary thumb, extra  
long stick, replaced injectors and lines Oct. '08  
2003 ASV RC100 - 1611 hrs, 2 spd. Trans., high/low  
flow pump, new hyd. Pump and sprocket barrel Oct.  
'08, track 55%  
1999 Kubota KX-91-2 mini-excavator - nice  
machine!, 1 newer track, plumbed for attachments,  
side boom swing, open ROPS  
Toro Dingo TX425 - 1131HRS. w/bucket  
2000 Genie 2032 - through the door' lift - 245 hours,  
electric scissor lift, newer batteries

**ATTACHMENTS**

Bobcat quick attach hydraulic auger  
Sweepster 110 heavy duty grapple bucket  
pallet forks  
80" snow bucket  
Bobcat 2500 jackhammer attachment  
Ashphalt bit for hydraulic hammer  
point bit for hydraulic hammer

**GAS POWERED TOOLS**

Husqvarna Partner K650 Cut-N-Break - Has never  
been used!  
Norton Clipper Concrete saw - Model C-65B,  
wisconsin engine, 687 hrs, (slab saw)  
Wacker BTS 1033 L3 concrete saw  
Partner K750 concrete saw  
Stihl T5 760 concrete saw  
Makita DPC 7301 concrete saw  
Poulan 3450 chainsaw  
Poulan 2055 chainsaw  
Homelite 6300 watt generator

**ELECTRIC TOOLS**

(2) Bosch electric rotary drill  
(2) Bosch 11316 chipping hammer  
Bosch HD recip saw in case  
Porter Cable Tiger Saw  
Dewalt 18v hammer drill  
Porter Cable pneumatic finish nailer  
Dewalt vibrating sander  
Dewalt 12v cordless drill  
Dewalt angle grinder  
Dewalt 7.2v rechargeable screwdriver  
Porter Cable 19.2 cordless drill

Bostitch pneumatic angle framing gun  
B&D angle grinder  
Dewalt angle grinder w/bag  
Metabo 9" angle grinder  
Makita masonry saw  
Work assault recip. Saw  
Skil 4 1/2" angle grinder w/case  
Maxx Air 48" fan  
torch head, gas and O2 regulators  
Milwaukee 18v cordless set  
Makita electric recip saw

**JOB-SITE/SHOP TOOLS**

(3) Rubbermaid trash cart  
Toter recycle bin  
Rolling staircase  
Jobox workbox  
(2) Roll-around scaffold  
Roll-around scaffold  
Bil-Jax scaffolding  
Frigidaire washer/dryer  
Halogen work light  
Terex Amida Industries worklight  
8' pallet rack  
Fiberglass extension ladder  
(34) shop lights  
(2) Reznor forced air nat. gas furnace  
Commercial work light  
(10) fiberglass stepladder  
(4) wheelbarrow  
carts  
hard hats  
pallet racking

**SPECIALTY TOOLS**

National Carpet equipment #71 Carpet Puller  
system  
(2) Edco Tilshark  
Edco doublehead surface grinder  
Castex Falcon water extractor  
(3) Tenant 1280 water extractor  
Hydro-Force portable water extractor  
Negative air machine  
Ellis 6x6 shoring jacks  
(2) Miller Ultra safety harness  
Edco scraper attachment  
(8) fire extinguishers  
water extractor wands

**HAND TOOLS**

(4) HD ext cord  
(2) extension cords  
(3) extension cords  
25' generator cord set  
(2) Stanley powerstrip  
(6) 1 to 3 cord adapters & power strip  
(6) hammers  
short handled sledhammer  
(2) partial driver bits & 1 partial drill bit set  
(2) dust pans (3) brushes, caution tape  
1st aid kit  
(2) axes  
(8) wrecking bars  
(2) levels and straight edge  
Stanley Fat Max Crowbar new  
(2) 4-way wrenches  
(5) pr of bolt cutter  
Axe and hammer head

**STANLEY COUNTER WHEEL**

13 mono posts  
Crewline creeper  
LP heater  
(2) chain binders  
blow torch  
blow torch  
2 wheel cart  
(2) squeegees  
(11) brooms  
(5) scoop shovels  
(4) flat shovels  
(4) shovels  
(4) sledgehammers  
splitting mall  
(6) scrapers  
(3) rakes  
(2) measuring wheel  
StraitLine laser level  
3/4" drive socket set  
Acetylene tank

**MISC & OFFICE**

(2) Wacker filters and air filter oil  
marker board (chalkboard on reverse)  
(3) coolers  
(2) hydraulic hoses w/quick couplers  
12' aluminum ramp  
time clock & card holder  
(9) 6x6 various lengths  
Canon NP 6030 copier  
HP LaserJet 3050 fax-copy-scan

**Auction/Payment Terms:**

Cash, or check with proper id due day of REMOVAL, nothing may be removed until settled for if arrangements have not been made prior to the end of scheduled removal your credit card will be billed for the amount due. Every item sells "as is, where is" without warranty or guarantee whatsoever. A 6% buyers premium will apply TO ALL PURCHASES. Not responsible for accidents or items after sold. This advertisement is only a guide, please inspect all merchandise. Announcements made the days of auction take precedence over printed material. List subject to change. Check our web site for additions or changes. Buyers of titled vehicles and out-of-state buyers must have check accompanied by letter of credit (see our website for example). Some items subject to lender approval of high bid.

**Bidding opens:**

May 26th 9:00 am and continues through May 28th 8:00 pm. Prebids will be accepted online beginning May 14th.

**Extended bidding**

When a bid is placed on a lot within the final 5 minutes of the scheduled end time of an auction, the remaining auction time will be extended an additional 5 minutes. If a lot does not receive a bid within the final 5 minutes of the auction the bidding will be closed. Please note: The auction time will only be extended for individual lots, not the entire catalog!

**Preview dates and times**

Tuesday May 26th 10:00am to 5:00pm Wednesday may 27th 10:00am to 5:00pm Thursday May 28th 9:00 am to 8:00pm Resources will be available to place bids at the auction site. Phone bids will be implemented through Proxibid, call (616) 437-1047 for information.

**Checkout dates and times**

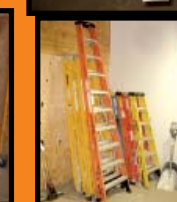
Friday May 29th 9:00am to 5:00pm Saturday May 30th 9:00am to 12:00pm Arrangements can be made outside of posted times if absolutely necessary, but will have to verified with Golden Gavel. Call (616) 437-1047 for information.

**Removal:**

Day of auction until 6:00 pm, \* Saturday, January 17th 9:00 am until 1:00 pm

**Directions:**

East of Allegan on M89 to 26th St., North 100 yds to site.



Online Bidding Powered By: **proxibid**

For more information and photos visit: [www.VKauctions.com](http://www.VKauctions.com) or go straight to the online catalog [www.Proxibid.com/GoldenGavel](http://www.Proxibid.com/GoldenGavel)