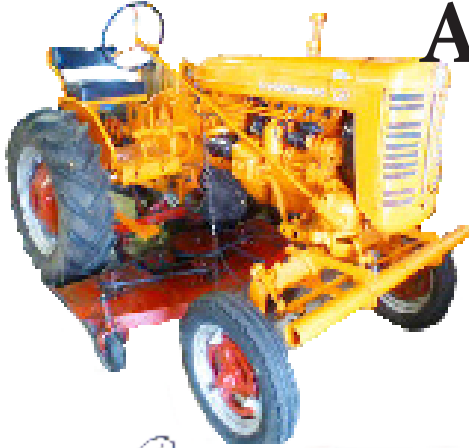


Riethmiller IH Collection Auction



8880 Dawson County Lane Grass Lake MI 49240
April 25th 10 AM



Braun & Helmer Auction Service

Brian Braun 734-368-1736

David Helmer 734-368-1733



www.BraunandHelmer.com





Tractors

1954 McCormick Farmall MTA Wide Front, Excellent Rubber, Runs Well, Power Steering, Good TA. Ser. 658895

International 130, Michigan State Highway Dept. Wide Front, Runs Well, Belly Mower

McCormick IH O4 with W4 Standard Decal, Belt Pulley, Ser. 0-7-115, Runs Well

1941 McCormick Farmall H, 3 pt hitch, Trip Bucket, Ser. 89538, Runs Well

International 350 Hi-Utility, 3881 hrs, 2pt, Good TA, Runs Well, Ser. 15430-S

Farmall Super C, 2 Pt hitch, Belly Blade, Nice Original Condition,

Runs Well, Ser. 178502J

International 330 Utility, Runs Well, 2pt, Ser 1847-S

(2) International Power Plants 4cyl 504-153

Lawn & Garden



2013 Yamaha Gas Golf Cart Model YDRAX3 with Utility Box, Excellent Condition

International Cub Cadet 650 Hydromatic 16hp Kohler Ser. 2050670U599202 W/ Snowblower #QA36A, Wheel

Weights & Chains, and IH WindBreaker

Cub Cadet 149 Hydrostatic W/ Rototiller Model 1-A

Cub Cadet 782 Hydro Model 7821420 W/ Mower Deck Ser. 20505840703380

Cub Cadet 830 8HP B&S W/ Deck, 6 Speed Transmission, Ser. 11-018-3051

Cub Cadet 108 W/ Deck Ser.20500430449425



Cub Cadet Snow blade, International Cub Cadet Rototiller Model 526, International Push Mower, Craftsman 3 Wheel Riding Mower model 24, Ranch King 34" Lawn Sweep, Craftsman 36" Aerator/Fertilizer Spreader.

Cyclone 16ft Flex Bat wing Finish Mower Model17-217-7063 Ser. 179353



3pt ARPS 6 1/2 ft Snowblower Model DS Ser. 3257

Tire Chains 13.6x38

5' King Cutter Brush Hog with 2pt Quick Tatch

3 Point Fimco Sprayer Model L6-55-3Pt Ser. 11-00



3pt 6ft Flail Mower

8'x6.5' Garwood Dump Trailer PTO Driven

3pt Hilling Plow

Wheel Weights

3pt 6.5ft IH Power Back Blade

5x10 Tilt Deck Trailer





Tools

Dayton 5HP 60 Gallon 220V upright Air Compressor Model4B236, Craftsman 250 amp Battery Charger, Poulan Pro Gas Pole Saw PP338PT, (2) Homelight Super XL 20" Chainsaw, Homelight Hedge Trimmer, Stihl FS40 Weed Whip, Sears 1.5 Ton Heavy Duty Floor Jack, Craftsman 3 Ton Floor jack, Sand Blaster Cabinet model SB9007, Large Set of Torches, Lincoln 225 Arc Welder, 150lb Anvil, Power Hacksaw, Wesco 750lb Dolly Lift, Delta Drill Press, Parts Washer, Champion Spark Plug Service Station, Barn Jacks, 80,000 BTU Gas Heater, Howse Platform Scale, 12 Gallon Craftsman Shop Vac, 12 Drawer Cabinet with Cub Cadet and Farmall Parts.



Toys



1/16 International 560, Farmall International H, 1/16 Farmall 350, 1/16 Farmall H, McCormick Deering 15-30, Farmall F12, 1/16 International 330 & 350 Hi-Utility NIB Set, 1/16 Ertl Farmall H, 1/16 McCormick WD-9 Ertl, 1/16 Farmall F-20 Ertl, 1/16 Farmall Super M-TA and More!



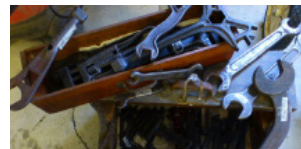
International Collectibles



Rare IHC Cookie Cutter, International Coffee Table Books, Knives, Buttons, Pins, Parts Books, and Operator Manuals, Pens/Bullet Pencils, IH Belt Buckle Collection, IH Coffee Cup Collection, IH C.G Lantis & Sons Stock-Bridge, MI Shirt, and much more!

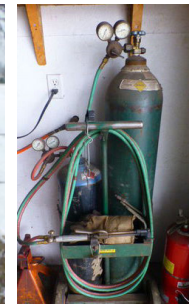
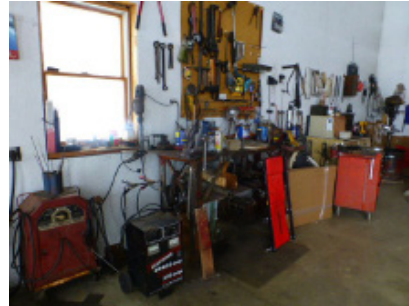


Guns



Model 37 Feather Light Ser. 868966 with Deer Slayer Barrel
Remington Model 10 Trapgrade, Ser U219843
W.F. Davenport Arms Co. Shotgun .32 cal. ser. J222263
Eastern Arms Co. Shotgun 16 Ga
The Colteer 4-22
Colt's New Service .45 Colt Revolver
Ruger New Model .22 Revolver
Saturday Night Special Revolver





Directions

8880 Dawson Country Lane, Grass Lake, MI 49240
I-94 to Clear Lake Rd. exit 153, right onto Clear Lake Rd., clear
Lake Rd. to Waterloo Rd. left to Waterloo Munith Rd.
slight left to Dawson Country Lane 1st left.



Braun & Helmer Auction Service



Questions call Brian Braun 734-368-1735

Many More Items Not Listed

Estate of Floyd & Jackie Riethmiller

Preview & Inspection @ 9:00am

10% Buyer's Premium -- Cash or Check with I.D.

Questions call: Brian Braun 734-368-1736

BRAUN & HELMER AUCTION SERVICE, INC.