

Barbour Boat - Walk Behind Mowers - Snow Plows  
 Antiques - President Taft Gone with the Wind Lamp  
 Furniture - Guns - Yard Tools  
 Paintings & Drawings - Vintage TV's & Radios

# → AUCTION

**Saturday, August 2nd – 10:30 AM**

**3250 South Grove Street, Ypsilanti, MI 48198**

**I-94 to Rawsonville Rd., exit 187. Turn right to Grove Rd/S Grove St Right to auction. Cash or check with proper ID.**



**1964 Barbour 16 1/2 ft. Mahogany boat** w/75 HP Johnson outboard motor enclosed canvas top, trailer, \$4000 invested in restorations, 87% done, you put on the finishing touches!

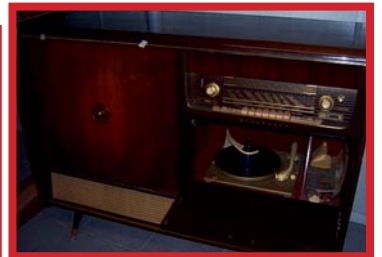
**11 ft. Jon Boat • Evinrude 10 hp boat motor**

**Walk Behind Mowers:** Cub Cadet 42" walk behind twin V 12.5 Briggs & Stratton Vanguard w/573 hrs., runs good! 1996 Bunton Goodall stand or walk behind mower, 14 hp Kawa-

saki w/48" in. cut, runs good!

**Snowplows:** 1995 Western Pro-Blade 7 1/2 ft. #60381, 1998 Fisher Minute Mount 7 1/2 ft.

**Yard Equipment:** Toro CCR3650 20" snowblower – 6 1/2 HP, 5 HP Craftsman chain drive tiller w/24" cut, Troybilt 21" mower – self propelled, Troybilt pressure washer – 1500 psi, Craftsman 10" cultivator/tiller, Homelite & Stihl weed wackers, Craftsman & McCullough chain saws, yard & garden hand tools, wheel barrow, tow behind aerator,



Michigan State  
Auctioneers Association



National Auctioneers  
Association

**Braun & Helmer**  
Auction Service

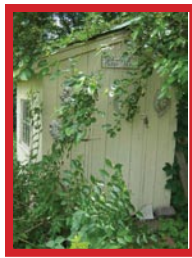
ANN ARBOR

Call BRIAN L. BRAUN • (734)996-9135

SALINE

~ DAVID G. HELMER • (734)368-1733 ~ JERRY L. HELMER • (734)368-1734

[www.BraunandHelmer.com](http://www.BraunandHelmer.com)



**Tools:** Craftsman bench grinder, sandblaster, Tapco 12" porto-brake, coil stock cutter, manual tile cutter, steel work bench, aluminum extension ladder, New Parking lot marker, hand tools

**Guns:** Iver Johnson 16 ga. Single shot, Mossberg Model 190 w/poly choke

**Aniques & Furniture:** Treasure Stove Co. treasure oak wood stove, NICE! (2) old steamer trunks, (2) Singer Industrial timers, end tables, King size bed, wooden tea cart, (2) Walnut chest drawers w/mirror, cedar trunk, pine cottage furniture, ant. Pressed back rocker, White Treadal sew machine, patio furniture, German beer steins & glasses, President Taft Gone With The Wind lamp, sm. Kenmore fridge,

**Paintings & Drawings:** Italian oil painting by Pussi Pussi, 1989 Charcoal art by Ann Arbor Artist Mlevnisk, 1974 pastel & graphite illustration of NYC by Robert Lawson, Artist Proof of Union Pacific Train pencil drawing by Robert Lawson

6' X 6' X 8' tall wood garden shed

**Plants to be Dug:** Hasta, eastern hemlock, spruce, irises, lillies

**Vintage TV & Radio:** 1960-1961 Blaupunkt radio console w/bar – made in Germany comes w/manual, Admiral B&W TV in orange & white case – very cool! 1963 Silvertone B&W TV in blonde case – all in working order, 78 records, RCA Victor Victrola turntable/radio,

Trailer mount pig cooker, Nexgrill Stainless Steel BBQ grill – 5 burners & side plate, Weber grill, Brinkman smoker, spool barb wire, stereo equipment, spools copper wire, heavy lock box, copper wash boiler, 1957 tobaggon, ski's (downhill & cross country), 12 ft' dia. Trampoline, lawn swings, sm. Quantity fire wood – split & dry 3-4 facecored, Rubbermaid composter, 5 dozen canning jars w/lids, cabbage cutter, shoe last, 5 gal. Acorn mark jug, (2) 15 gal. Crocks – 1 w/handles, 10 gal. Crock  
Many more items not listed!

# Braun & Helmer Auction Service

[www.BraunandHelmer.com](http://www.BraunandHelmer.com)