

Living Estate/Antique

Saturday,
November 3, 2007
10:30 a.m.

AUCTION

8265 Dexter-Chelsea Rd., Dexter, MI

(Take I-94 to Zeeb Rd., north to Dexter-Ann Arbor Rd., west through Dexter to Dexter-Chelsea Rd., then left to K of C Hall)

Living Estate of Richard and Naomi (Nan) Ament

1986 Chrysler Lebaron GTS • 1972 Starcraft Camper • Guns • Pedal Car • Antiques
Wallace Nutting & Other Pictures • Antique Furniture • Silver • Much More!

CAR: 1986 Chrysler Lebaron GTS, 3 Ltr. V-6, 4 dr. auto, ps, pb, pw, pl, cruise, tilt, 95k miles, grey cloth interior.



GUNS: Lefever Nitro Special, double barrel 12 gauge, Remington Model "6" #457471 single shot short/long rifle, A.W. Spies muzzle loader – early, w/tiger maple stock (chipped stock, missing ram rod & brass trim), Early 5' 6" muzzle loading rifle w/ very old Provincance tag (This gun was used in Battle of Bennington Vermont Revolutionary War)



PEDAL CAR: Juvenile Auto "Hupmobile", made by the American National Co; Toledo, Ohio (original finish & in working order).

ANTIQUES: 4 – Gal. butter churn (F. Broadworth; Burlington, Vermont), string of brass sleigh bells, horse drawn cutter and phills (original & nice), antique Chinese silks, pictures & clothing, map of Franklin County New York (1855) and other items.



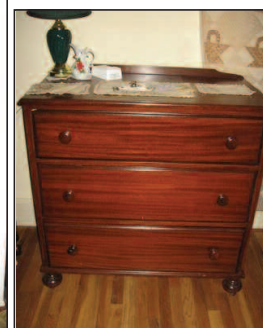
PICTURES: Wallace Nutting – Little River, Whitsunday (1902) Country Road Apple Blossom, Terborch (copy)1875 in gold guild frame, Raphael's Cherub – 1872 J. Latham & Sons, Julienne Bain 1925 pencil of trees, Grace Darling by J. Latham, Boston, pair of antique hand colored pictures in carved frames w/ red velvet trim.



ANTIQUE FURNITURE: Beautiful early cherry chest-on-chest of drawers, nice slant front walnut secretary in original condition, large antique spinning wheel (John Sturdevant stamped in end), antique yarn winder, beautiful antique walnut 5 drawer marble top bureau (original finish w/key), antique poplar game table, ladder back dining chairs, (2) single post mahogany beds, 4-drawer mahogany dresser, 3-drawer mahogany chest, small single glass door bookcase, (2) primitive walnut wash stands, nice primitive pine 6-board blanket chest w/ glove box (beautiful original red & hardware), heavy plank walnut dining table, early cane back walnut desk chair, roll top desk (unusual smaller size – 42" w x 45" h), The Marble & Shattuck Chair Co., Cleveland walnut desk chair, walnut mirror, wooden quilt racks, Windsor chair, early child's slant-front oak desk w/ chair & educational scroll, mahogany 5-drawer hi-boy, early walnut crib, 4-post mahogany bed, pine 2-door bookcase, The Immes Braced Furniture Co, Elkhart, Ind. Desk & chair (painted white), (2) footlocker trunks, upholstered slipper chair, (2) walnut end tables & coffee table, nice green sofa &



This is on back of picture at left.



Cash or Check with I.D. , Lunch Service & Restroom Available.

Braun & Helmer Auction Service, Inc.

Call BRIAN L. BRAUN • (734) 996-9135
Ann Arbor

DAVID G. HELMER • 368-1733
JERRY L. HELMER • 368-1734
Saline



www.braunandhelmer.com

