

LIVE & ONLINE AUCTION

Saturday, April 13th at 9am

SELLERS: Mike Glass

FARM EQUIPMENT & MACHINERY

AUCTION LOCATION

12611 Hackenburg Rd,
Marcellus, MI 49067



John Deere 7820 tractor



IH 1086 tractor



John Deere 8440 tractor



John Deere 9500 combine

FARM EQUIPMENT

- Kiwani 45' grain auger
- (2) Feterl 60' grain augers
- Mayrath 48' grain auger
- 850 bushel grain bin w/ auger
- **John Deere** 510 deep till disc, 15'
- IH 510 grain drill, soybean special
- (2) Endguns, (1 is 1200' turntable, 1 is 1000' stationary)
- **John Deere** Rainbow irrigation pump
- **John Deere** 2500 5 bottom plow, 18" bottoms, spring reset
- **John Deere** 750 No-till drill, 15' (set up for soybeans)
- **John Deere** 7200 12-row corn planter, 30" rows, precision fingers
- IH 5100 grain drill
- NH 679 manure spreader
- (2) Swing augers for hopper bottom trucks
- **John Deere** 1210A 500 bushel grain cart
- (3) 200 bushel gravity wagons, no gears
- 450-500 bushel gravity wagon, J&M gear
- 350 bushel gravity wagon, J&M box, JD gear
- **John Deere** 1010 field cultivator, 24'
- Brillion crumbler, 24'
- DMI crumbler, 22'
- IH Field cultivator, 20'
- Landoll 9 shank chisel plow
- Brillion 7 shank chisel plow
- IH 9 shank chisel plow
- Unverferth 6 shank inline ripper, 3 pt. mount, auto-reset
- **John Deere** 722 soil finisher, 20'
- **John Deere** 220 disc, 20'
- **John Deere** cultmulcher, solid wheel, 16'
- **John Deere** 1518 batwing brush mower, 18', 1000 RPM
- Art's Way 425A feed grinder w/ scales, rough
- NH 163 4-basket tedder
- **John Deere** 5 bar hay rake
- IH 435 small sq. baler
- Hoelscher 10 bale hyd. accumulator
- (2) Hoelscher accumulator grapples
- 1000 gal. sprayer, foam marker
- Kiwani 40' elevator, 8HP, B&S engine
- 6" aluminum irrigation pipe, various lengths

MACHINERY

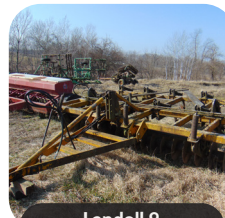
- **John Deere** 7820 tractor, MFWD, rear duals, 198HP, cab (4900 hrs)
- **John Deere** 1086 tractor, 150 HP, cab
- **John Deere** 8440 tractor, 4WD, new duals, 50 Series motor, cab
- IH 966 tractor, 100 HP, cab
- Case 930 tractor, Comfort King, 3-pt. mount forklift mast
- IH 986 tractor, new clutch, rebuilt engine, cab (9000+ hrs)
- **John Deere** 9500 combine, 920 grain head, 643 6-row narrow corn head
- Bobcat 853 skid loader, Kubota engine (5100 hrs)



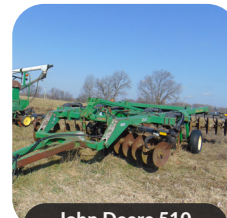
John Deere 1210A 500-bushel grain cart



John Deere 7200 12-row planter



Landoll 9 shank chisel plow



John Deere 510 deep till disc



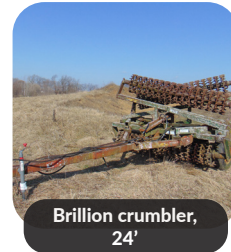
IH 435 square baler



Endgun, 1200' round table



40' Hopper bottom trailer



Brillion crumbler, 24'

MISC ITEMS

- **John Deere** 400 garden tractor, new engine, needs some repair
- 1,000-gallon fuel tank
- Quick attach blade
- Quick attach grapple
- Log splitter

TRAILERS

- 40' hopper bottom trailer, steel
- Fontaine 40' log trailer
- Trail Mobile 40' semi trailer, flat bed
- 36' log trailer ***NO TITLE**
- 16' trailer ***NO TITLE**

VEHICLES

- Jeep Wrangler with a snow plow (71k mi) ***NO TITLE**
- Ford F-250 single cab truck, 4WD (153k mi)

AUCTION PREVIEWS

APRIL 10-12, 8a - 2p

AUCTION LOADOUT

APRIL 15-17, 8a - 2p

MAIN OFFICE
(574) 821-7653
AC32100007



ALVIN YODER
(260) 214-9860

Auctioneer, Pers. Prop. Manager



10% on-site buyer's premium, add'l 3-5% for online sales.

Cash, check, or major credit card accepted; 3% convenience fee for credit card sales.

