

AUCTION

1983 John Deere 6620 Combine
1994 John Deere 918 Grain Head
1977 John Deere 444 Corn Head
1979 John Deere 7000 Planter

Timed, Online Only Auction

Wed, March 13, 2024

All bidding for this auction on



Sellers: Paul and Jim Bernhard

PICKUP LOCATIONS:

23263 S. Cherry Hill Rd, Manhattan, IL
23400 S. Rowell Ave, Elwood, IL

Auction Conducted by:

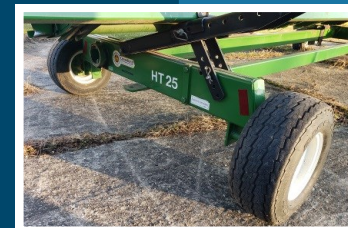
Lucky Auctions LLC

531 Bedford Rd, Morris, IL 60450

(815) 931-0699

Erik Olson - Auctioneer

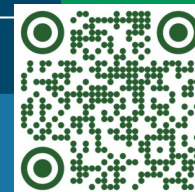
IL Auction Firm License: 444.000601



See website for bidding instructions and more information.

www.BidLuckyAuctions.com

LUCKY
— auctions —



LUCKY

auctions

Welcome to Lucky Auctions!

WHAT TYPE OF AUCTION: This is a Timed, Online-Only Auction in Morris, IL. We offer Shipping (at buyers expense) or Pick-up in Morris, IL. Bidding is now open.

WHAT TYPE OF ITEMS: Pocket Watches - Clocks - Wristwatches - Jewelry - Gold and Silver Coins - Comic Books - Sterling Silver Flatware - Collectibles

WHEN DOES

END: The first will start

CLOSING:

Monday,
November 27,
2023 at 6:00

CT. (Lots will
close every 20

seconds. Bids placed within the final 2 minutes will extend the bidding an additional 2 minutes.)

WHERE & WHEN DO I PICK-UP MY ITEMS: For out-of-state bidders, we will prepare your item(s) for shipping. First, you will see a charge in the amount of the invoice. Then, we will email you a 2nd time with the shipping charges when it's ready to ship. For local bidders, call or email us to schedule a pick up time/date. Items must be picked up within 7 days.

HOW DO I PAY: Invoices are emailed within an hour after the auction closes and you may PAY at pick-up by cash, check, or credit card. Check Spam Folder after auction if you did not receive invoice. 13% Buyers Premium applied to winning bid. 3% BP Discount for Cash/Check is applied at time of pick-up (payment). We do NOT automatically charge credit cards for local pick-up bidders.

Seller: 14 Different Estates

**DO NOT PRINT BACK PAGE -
INCORRECT AUCTION INFORMATION**

IT
lot

PM